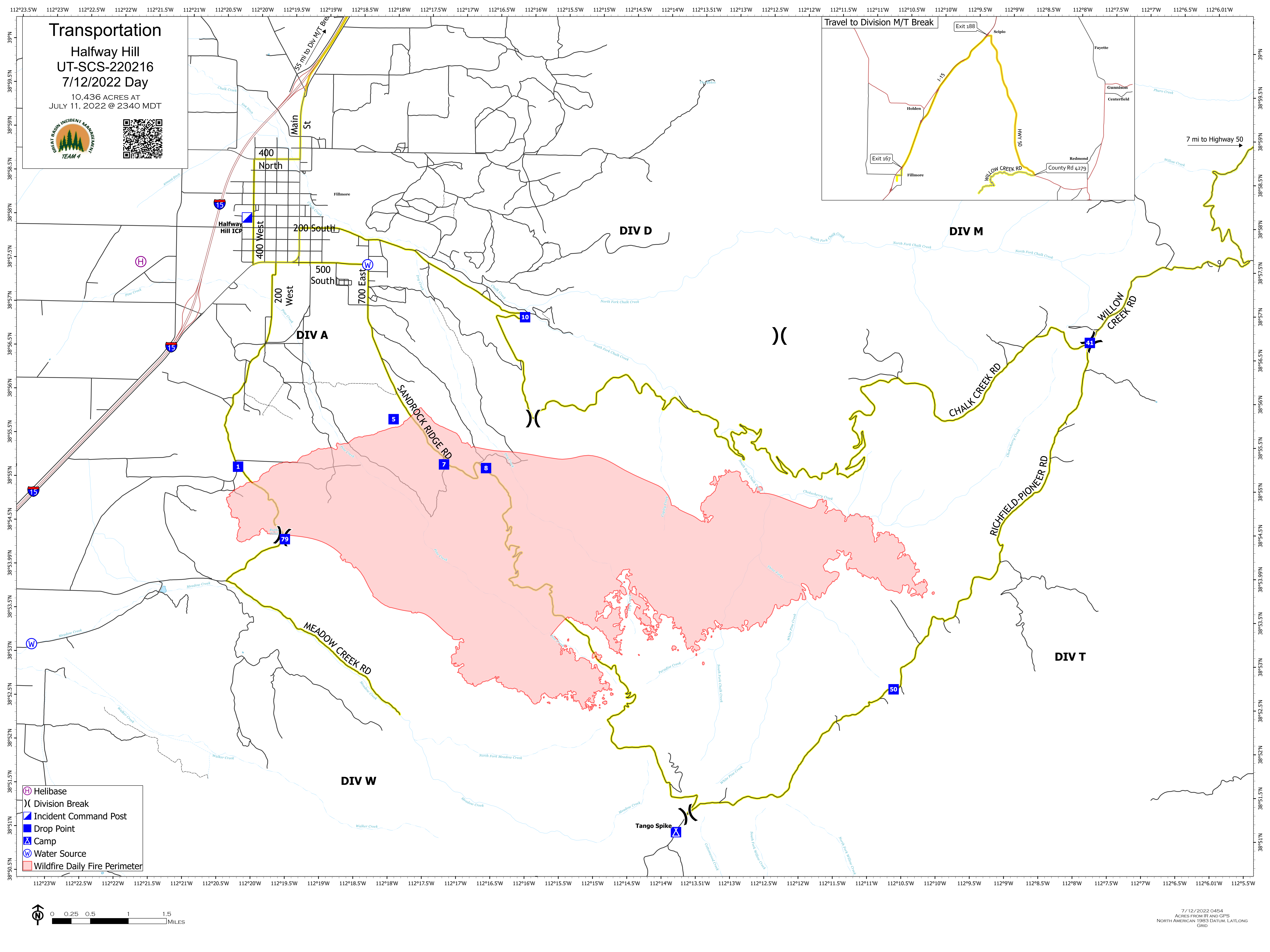
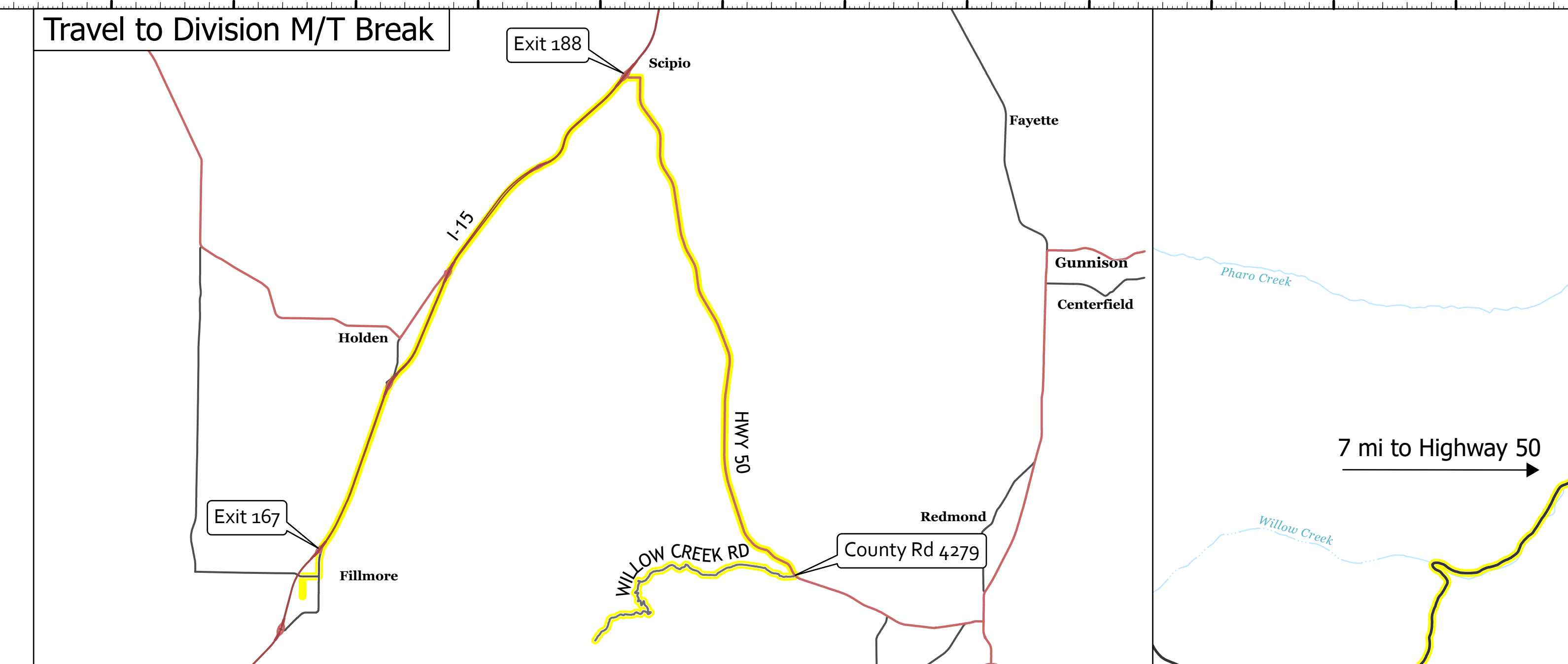


Transportation

Halfway Hill
UT-SCS-220216
7/12/2022 Day
10,436 ACRES AT
JULY 11, 2022 @ 2340 MDT



- ⊕ Helibase
- ⌘ Division Break
- ▢ Incident Command Post
- Drop Point
- ▲ Camp
- ⊙ Water Source
- ▭ Wildfire Daily Fire Perimeter

