

ESTIMATED GROUND EVACUATION TIMES

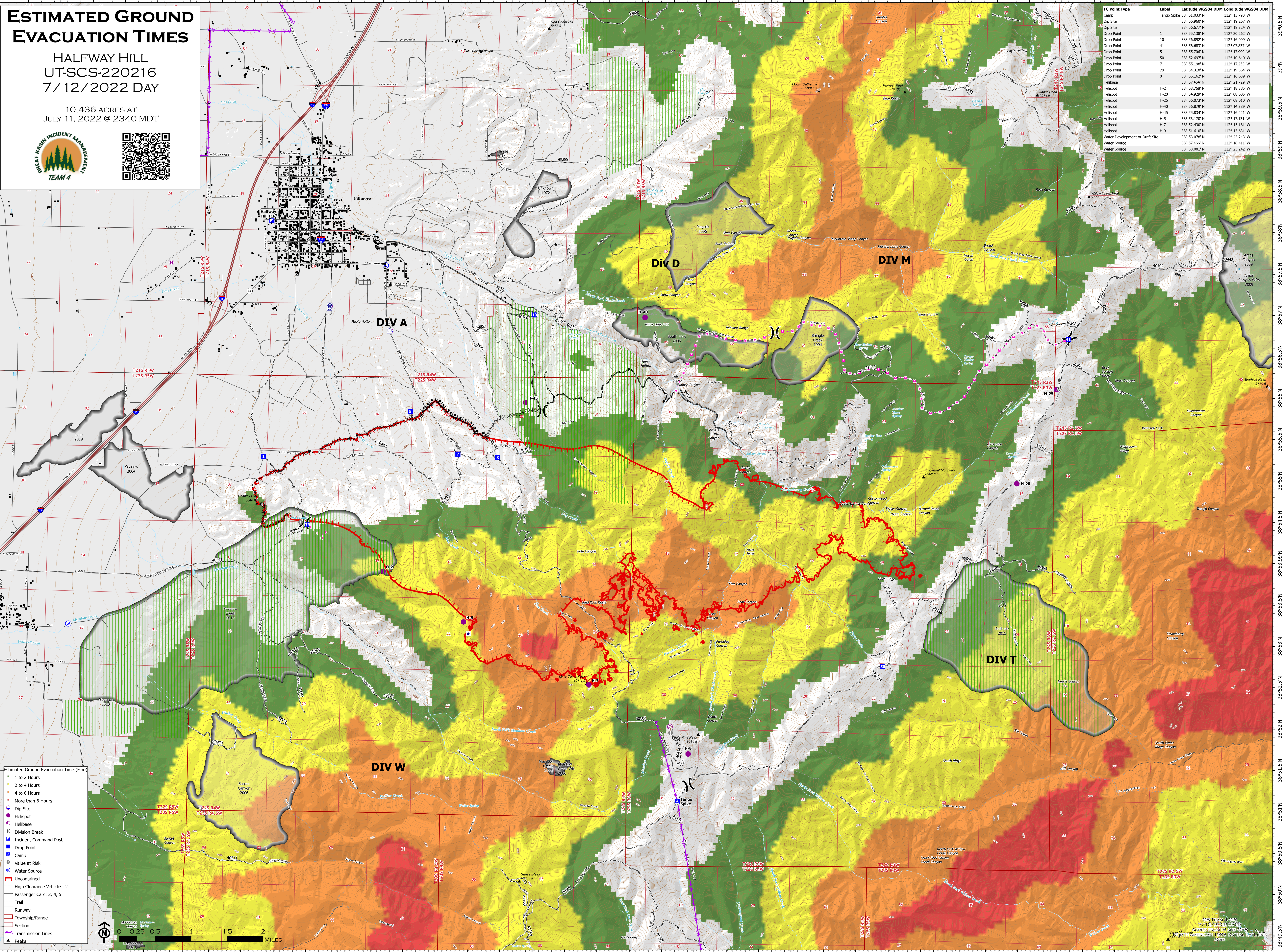
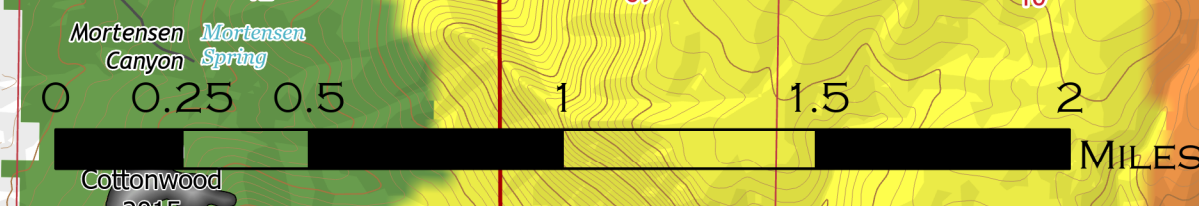
HALFWAY HILL
UT-SCS-220216
7/12/2022 DAY

10,436 ACRES AT
JULY 11, 2022 @ 2340 MDT



FC Point Type	Label	Latitude WGS84 DDM	Longitude WGS84 DDM
Camp	Tango Spike	38° 51.033' N	112° 13.790' W
Dip Site		38° 56.677' N	112° 19.267' W
Dip Site		38° 56.677' N	112° 18.324' W
Drop Point	1	38° 55.138' N	112° 20.262' W
Drop Point	10	38° 56.892' N	112° 16.099' W
Drop Point	41	38° 56.683' N	112° 07.837' W
Drop Point	5	38° 53.786' N	112° 17.389' W
Drop Point	50	38° 52.697' N	112° 10.640' W
Drop Point	7	38° 55.198' N	112° 17.253' W
Drop Point	79	38° 54.318' N	112° 19.564' W
Drop Point	8	38° 55.162' N	112° 16.639' W
Helibase		38° 57.464' N	112° 21.729' W
Helispot	H-2	38° 53.786' N	112° 18.389' W
Helispot	H-20	38° 54.929' N	112° 08.605' W
Helispot	H-25	38° 56.073' N	112° 08.010' W
Helispot	H-40	38° 56.879' N	112° 14.389' W
Helispot	H-45	38° 55.834' N	112° 16.221' W
Helispot	H-5	38° 53.170' N	112° 17.131' W
Helispot	H-7	38° 52.830' N	112° 15.181' W
Helispot	H-9	38° 51.610' N	112° 13.631' W
Water Development or Draft Site		38° 53.078' N	112° 23.243' W
Water Source		38° 57.466' N	112° 18.411' W
Water Source		38° 53.081' N	112° 23.242' W

- Estimated Ground Evacuation Time (Fine)
- 1 to 2 Hours
 - 2 to 4 Hours
 - 4 to 6 Hours
 - More than 6 Hours
- Dip Site
 - Helispot
 - Helibase
 - Division Break
 - Incident Command Post
 - Drop Point
 - Camp
 - Value at Risk
 - Water Source
 - Uncontained
 - High Clearance Vehicles: 2
 - Passenger Cars: 3, 4, 5
 - Trail
 - Runway
 - Township/Range
 - Section
 - Transmission Lines
 - Peaks



GB TEAM © 2016
7/12/2022 09:23
ACRES FROM 2002 STE
BY GREAT BASIN INCIDENT MANAGEMENT TEAM