

112°21.01'W

112°20'W

112°19'W

112°18'W

112°17'W

112°16'W

112°15'W

38°57'N

38°56'N

38°55'N

38°53.99'N

38°53.99'N

38°57'N

38°56'N

38°55'N

38°53.99'N

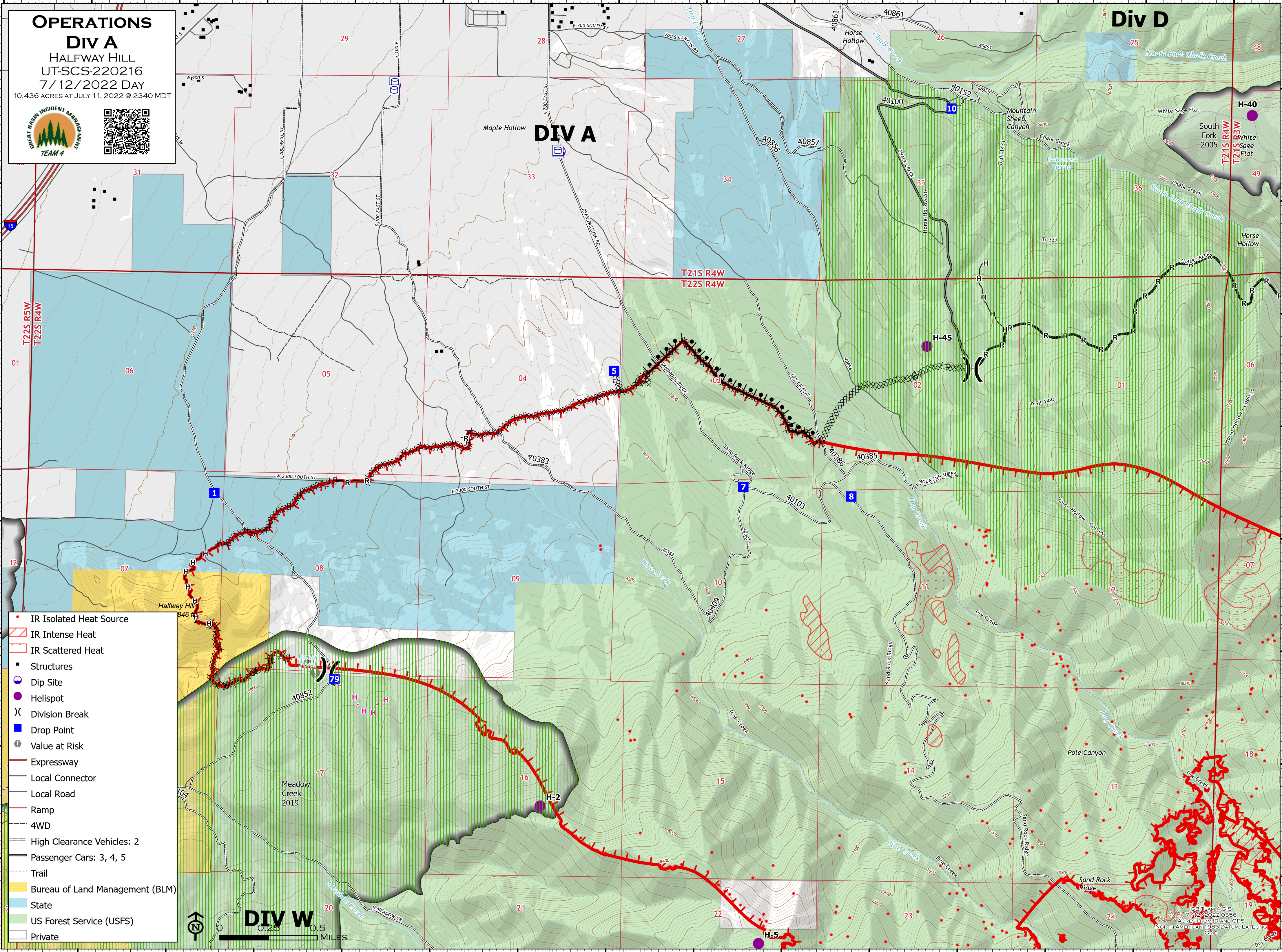
38°53.99'N

**OPERATIONS**  
**Div A**  
 HALFWAY HILL  
 UT-SCS-220216  
 7/12/2022 DAY  
 10,436 ACRES AT JULY 11, 2022 @ 2340 MDT




**Div D**

**Div A**



- IR Isolated Heat Source
- ▨ IR Intense Heat
- ▨ IR Scattered Heat
- Structures
- ⊙ Dip Site
- Helispot
- ⌋ Division Break
- Drop Point
- ⊙ Value at Risk
- Expressway
- Local Connector
- Local Road
- Ramp
- 4WD
- High Clearance Vehicles: 2
- Passenger Cars: 3, 4, 5
- Trail
- Bureau of Land Management (BLM)
- State
- US Forest Service (USFS)
- Private



GB TEAM 4 GIS  
 7/12/2022 0356  
 ACRES FROM IR AND GPS  
 NORTH AMERICAN 1983 DATUM, LAT/LONG  
 GRID