

112°17'W

112°16'W

112°15'W

112°14'W

112°13'W

112°12'W

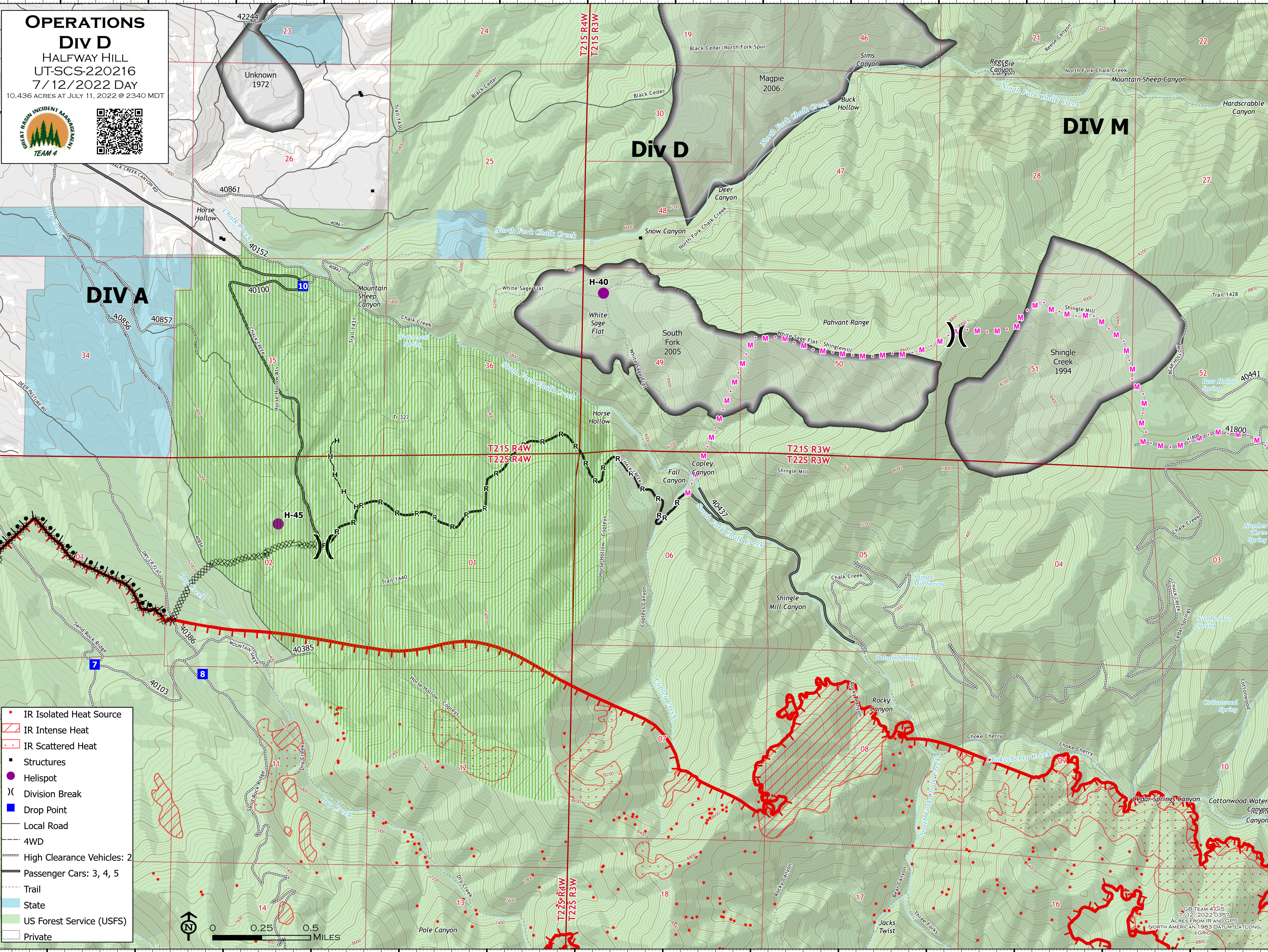
112°11'W

38°58'N  
38°57'N  
38°56'N  
38°55'N  
38°54'N  
38°53.99'N

38°58'N  
38°57'N  
38°56'N  
38°55'N  
38°54'N  
38°53.99'N

**OPERATIONS**  
**Div D**  
 HALFWAY HILL  
 UT-SCS-220216  
 7/12/2022 DAY  
 10,436 ACRES AT JULY 11, 2022 @ 2340 MDT





- IR Isolated Heat Source
- ▨ IR Intense Heat
- ◌ IR Scattered Heat
- Structures
- Helispot
- ) Division Break
- Drop Point
- Local Road
- - - 4WD
- ==== High Clearance Vehicles: 2
- Passenger Cars: 3, 4, 5
- - - Trail
- State
- US Forest Service (USFS)
- Private



GB TEAM 4 GIS  
 7/12/2022 0357  
 ACRES FROM IR AND GPS  
 NORTH AMERICAN 1983 DATUM LAT/LONG  
 8 GRID  
 8800