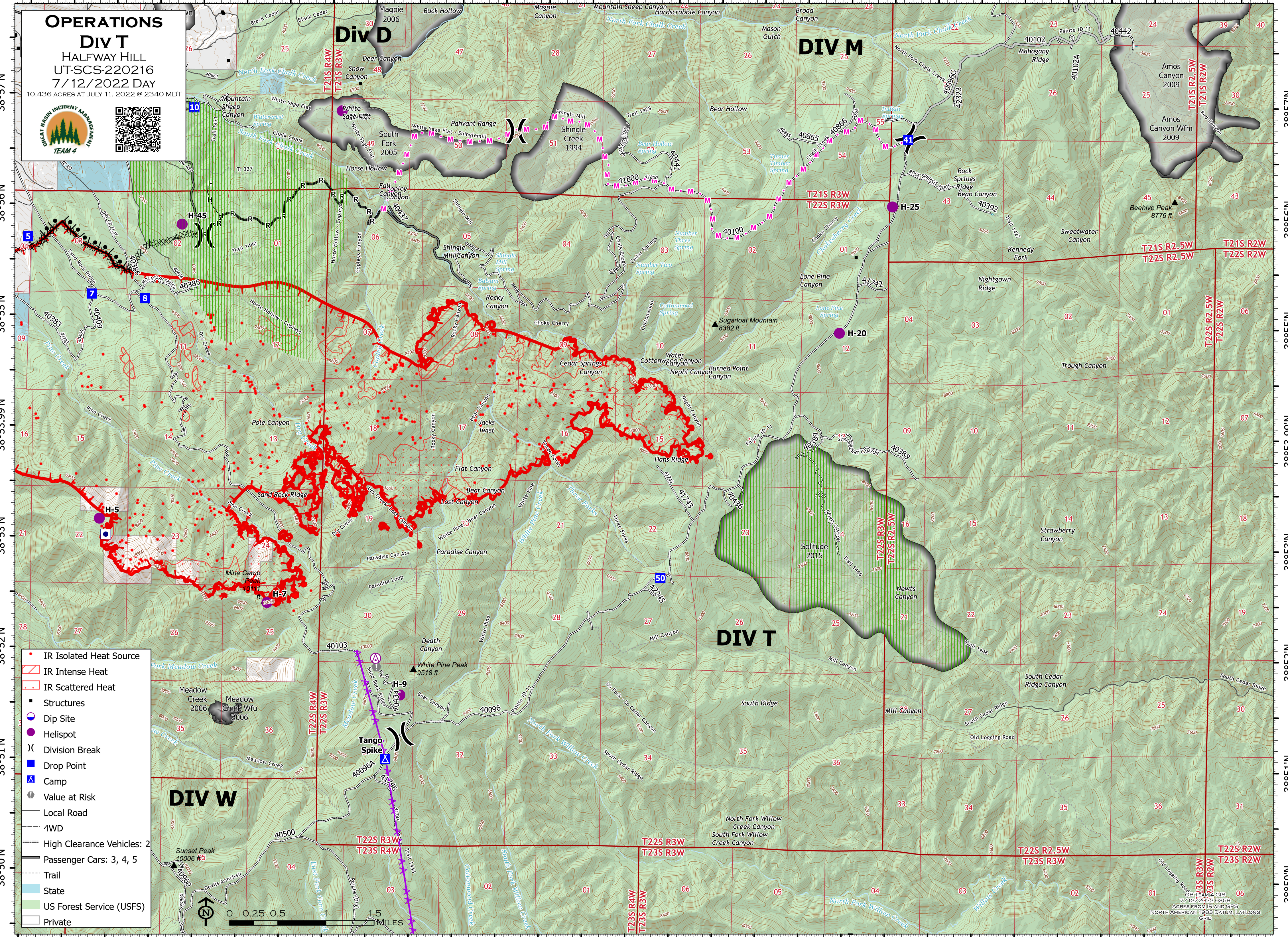


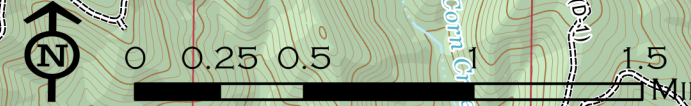
112°18'W 112°17'W 112°16'W 112°15'W 112°14'W 112°13'W 112°12'W 112°11'W 112°10'W 112°9'W 112°8'W 112°7'W 112°6.01'W 112°5'W 112°4'W



OPERATIONS
DIV T
 HALFWAY HILL
 UT-SCS-220216
 7/12/2022 DAY
 10,436 ACRES AT JULY 11, 2022 @ 2340 MDT




- IR Isolated Heat Source
- ▭ IR Intense Heat
- ▭ IR Scattered Heat
- ▭ Structures
- Dip Site
- Helispot
-) Division Break
- Drop Point
- ▲ Camp
- Value at Risk
- Local Road
- 4WD
- High Clearance Vehicles: 2
- Passenger Cars: 3, 4, 5
- Trail
- State
- US Forest Service (USFS)
- Private



7/12/2022 0358
 ACRES FROM IR AND GPS
 NORTH AMERICAN 1983 DATUM: LATLONG
 GRID

112°18'W 112°17'W 112°16'W 112°15'W 112°14'W 112°13'W 112°12'W 112°11'W 112°10'W 112°9'W 112°8'W 112°7'W 112°6.01'W 112°5'W 112°4'W