

112°21.01'W

112°20'W

112°19'W

112°18'W

112°17'W

112°16'W

112°15'W

38°57'N

38°56'N

38°55'N

38°53.99'N

38°57'N

38°56'N

38°55'N

38°53.99'N

# OPERATIONS Div A

HALFWAY HILL  
UT-SCS-220216  
7/12/2022 DAY

10,436 ACRES AT JULY 11, 2022 @ 2340 MDT



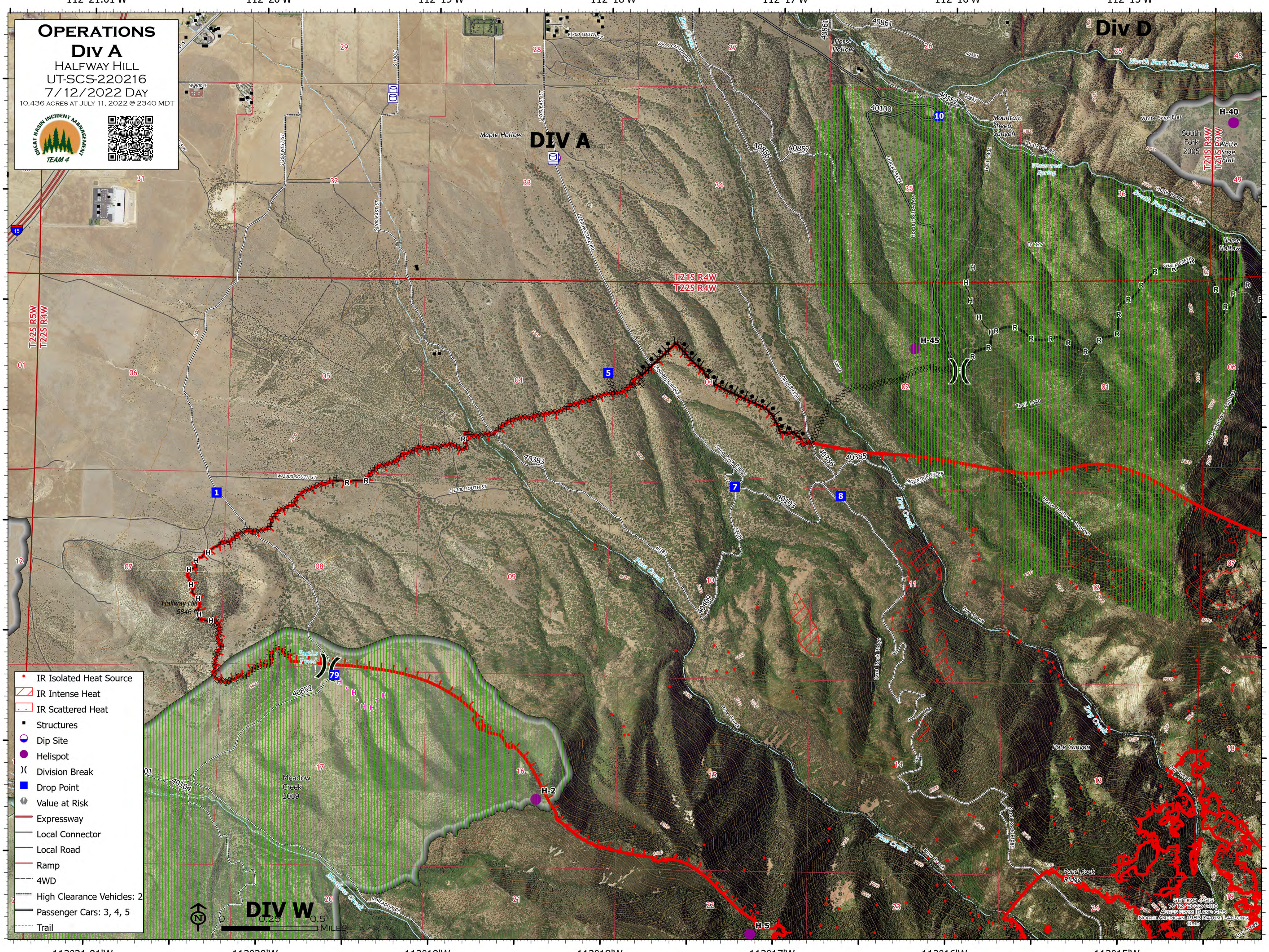
## DIV A

## Div D

T225 R5W  
T225 R4W

T215 R4W  
T225 R4W

T215 R4W  
T215 R3W



- IR Isolated Heat Source
- ▨ IR Intense Heat
- ▨ IR Scattered Heat
- Structures
- Dip Site
- Helispot
- ⌋ Division Break
- Drop Point
- ⚠ Value at Risk
- Expressway
- Local Connector
- Local Road
- Ramp
- 4WD
- High Clearance Vehicles: 2
- Passenger Cars: 3, 4, 5
- Trail



## DIV W

GP TEAM 4 GIS  
7/12/2022 @ 13  
ACRES FROM IR AND GPS  
NORTH AMERICAN 1983 DATUM LAT/LONG  
GRID