

112°17'W

112°16'W

112°15'W

112°14'W

112°13'W

112°12'W

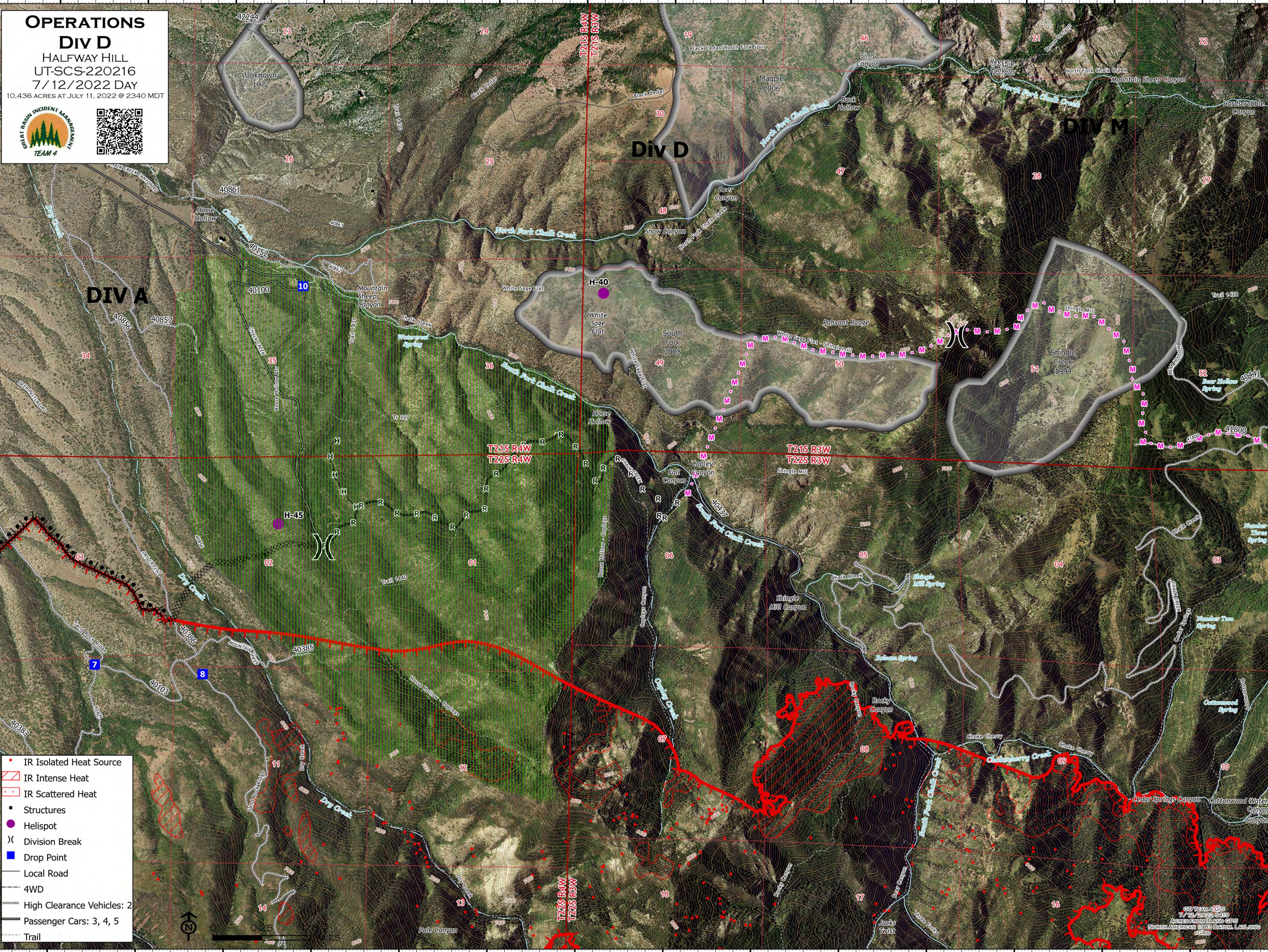
112°11'W

38°58'N
38°57'N
38°56'N
38°55'N
38°54'N
38°53.99'N

38°58'N
38°57'N
38°56'N
38°55'N
38°54'N
38°53.99'N

OPERATIONS
Div D
 HALFWAY HILL
 UT-SCS-220216
 7/12/2022 DAY
 10,436 ACRES AT JULY 11, 2022 @ 2340 MDT





- IR Isolated Heat Source
- ▨ IR Intense Heat
- - - IR Scattered Heat
- Structures
- Helispot
- X Division Break
- Drop Point
- Local Road
- - - 4WD
- - - High Clearance Vehicles: 2
- - - Passenger Cars: 3, 4, 5
- - - Trail



0 25 50 METERS

GP TEAM 4 GIS
 7/12/2022 @ 19
 ACRES FROM IR AND GPS
 NORTH AMERICAN 1983 DATUM, LANTERN
 GRID