

OPERATIONS

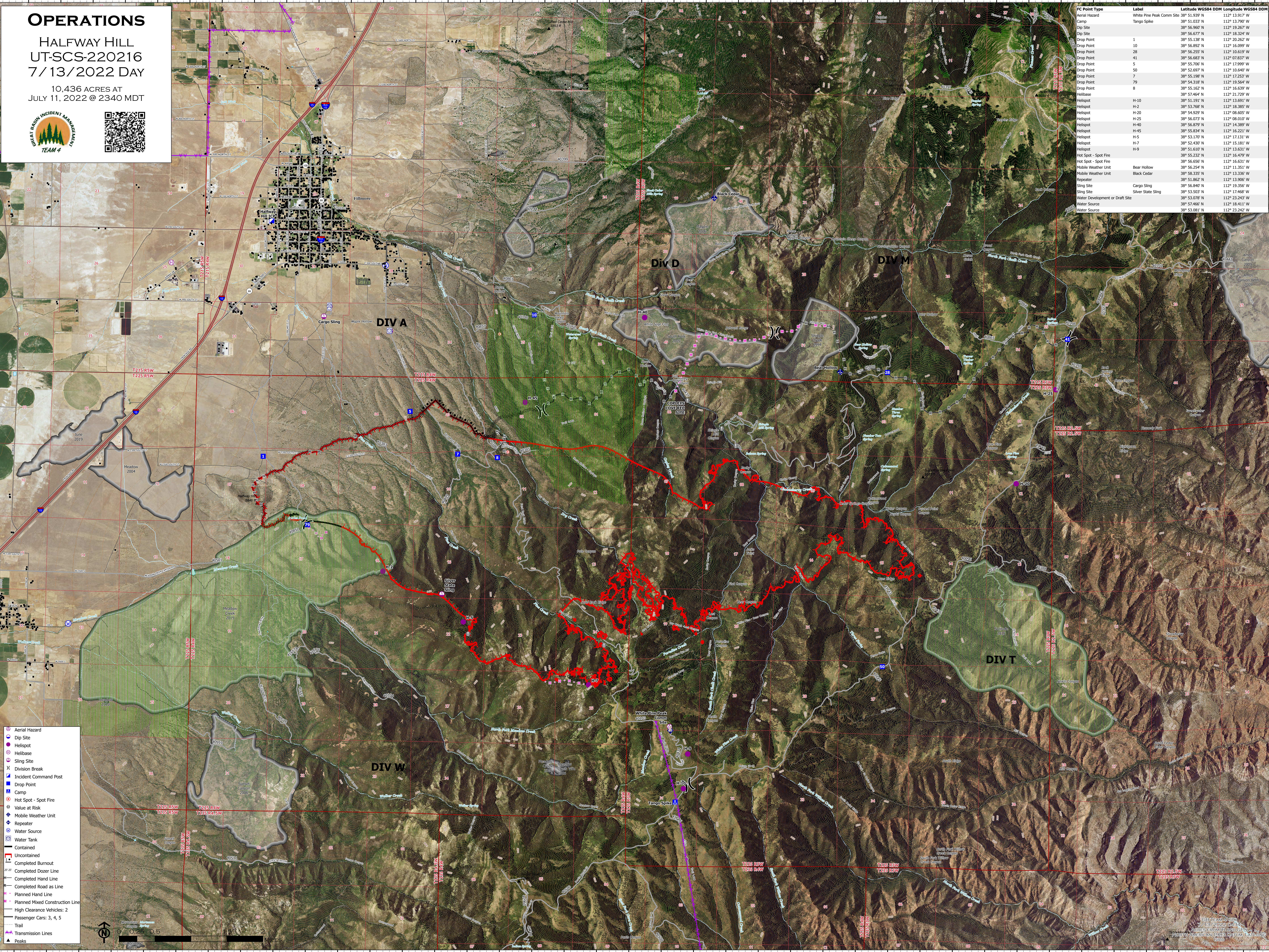
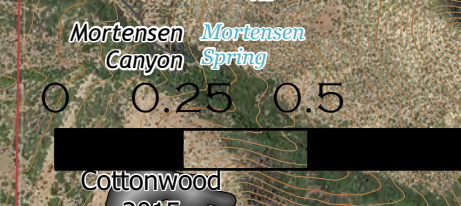
HALFWAY HILL
UT-SCS-220216
7/13/2022 DAY

10,436 ACRES AT
JULY 11, 2022 @ 2340 MDT



FC Point Type	Label	Latitude WGS84 DDM	Longitude WGS84 DDM
Aerial Hazard	White Pine Peak Comm Site	38° 51.539' N	112° 13.917' W
Dip Site	38° 56.967' N	112° 13.790' W	
Dip Site	Tango Spike	38° 56.967' N	112° 19.267' W
Dip Site		38° 56.677' N	112° 18.324' W
Dip Site		38° 55.138' N	112° 20.262' W
Drop Point	1	38° 56.892' N	112° 16.099' W
Drop Point	28	38° 56.555' N	112° 19.519' W
Drop Point	41	38° 56.683' N	112° 07.837' W
Drop Point	5	38° 55.706' N	112° 17.999' W
Drop Point	50	38° 52.697' N	112° 10.640' W
Drop Point	7	38° 55.198' N	112° 17.253' W
Drop Point	79	38° 54.318' N	112° 19.564' W
Drop Point	8	38° 55.162' N	112° 16.339' W
Helibase		38° 57.464' N	112° 21.729' W
Helispot	H-10	38° 51.191' N	112° 13.691' W
Helispot	H-2	38° 53.768' N	112° 18.385' W
Helispot	H-20	38° 54.929' N	112° 08.605' W
Helispot	H-25	38° 56.073' N	112° 08.010' W
Helispot	H-40	38° 56.379' N	112° 14.389' W
Helispot	H-45	38° 55.834' N	112° 16.221' W
Helispot	H-5	38° 53.170' N	112° 17.131' W
Helispot	H-7	38° 52.430' N	112° 15.181' W
Helispot	H-9	38° 51.610' N	112° 13.631' W
Hot Spot - Spot Fire		38° 55.232' N	112° 16.479' W
Hot Spot - Spot Fire		38° 56.856' N	112° 16.531' W
Mobile Weather Unit	Bear Hollow	38° 56.254' N	112° 11.351' W
Mobile Weather Unit	Black Cedar	38° 58.335' N	112° 13.336' W
Repeater		38° 51.862' N	112° 13.906' W
Sling Site	Cargo Sling	38° 56.840' N	112° 19.356' W
Sling Site	Silver State Sling	38° 53.303' N	112° 17.468' W
Water Development or Draft Site		38° 53.078' N	112° 23.043' W
Water Source		38° 57.466' N	112° 18.411' W
Water Source		38° 53.081' N	112° 23.242' W

- Aerial Hazard
- Dip Site
- Helispot
- Helibase
- Sling Site
- X Division Break
- Incident Command Post
- Drop Point
- Camp
- Hot Spot - Spot Fire
- Value at Risk
- Mobile Weather Unit
- Repeater
- Water Source
- Water Tank
- Contained
- Uncontained
- Completed Burnout
- Completed Dozer Line
- Completed Hand Line
- Completed Road as Line
- Planned Hand Line
- Planned Mixed Construction Line
- High Clearance Vehicles: 2
- Passenger Cars: 3, 4, 5
- Trail
- Transmission Lines
- Peaks



112°24'W 112°23.5'W 112°23'W 112°22.5'W 112°22'W 112°21.5'W 112°21.01'W 112°20.5'W 112°20'W 112°19.5'W 112°19'W 112°18.5'W 112°18'W 112°17.5'W 112°17'W 112°16.5'W 112°16'W 112°15.5'W 112°15'W 112°14.5'W 112°14'W 112°13.51'W 112°13'W 112°12.5'W 112°12'W 112°11.5'W 112°11'W 112°10.5'W 112°10'W 112°9.5'W 112°9'W 112°8.5'W 112°8'W 112°7.5'W 112°7'W 112°6.5'W 112°6.01'W 112°5.5'W 112°5'W