

112°21.01'W

112°20'W

112°19'W

112°18'W

112°17'W

112°16'W

112°15'W

38°57'N

38°56'N

38°55'N

38°53.99'N

38°53.99'N

38°57'N

38°56'N

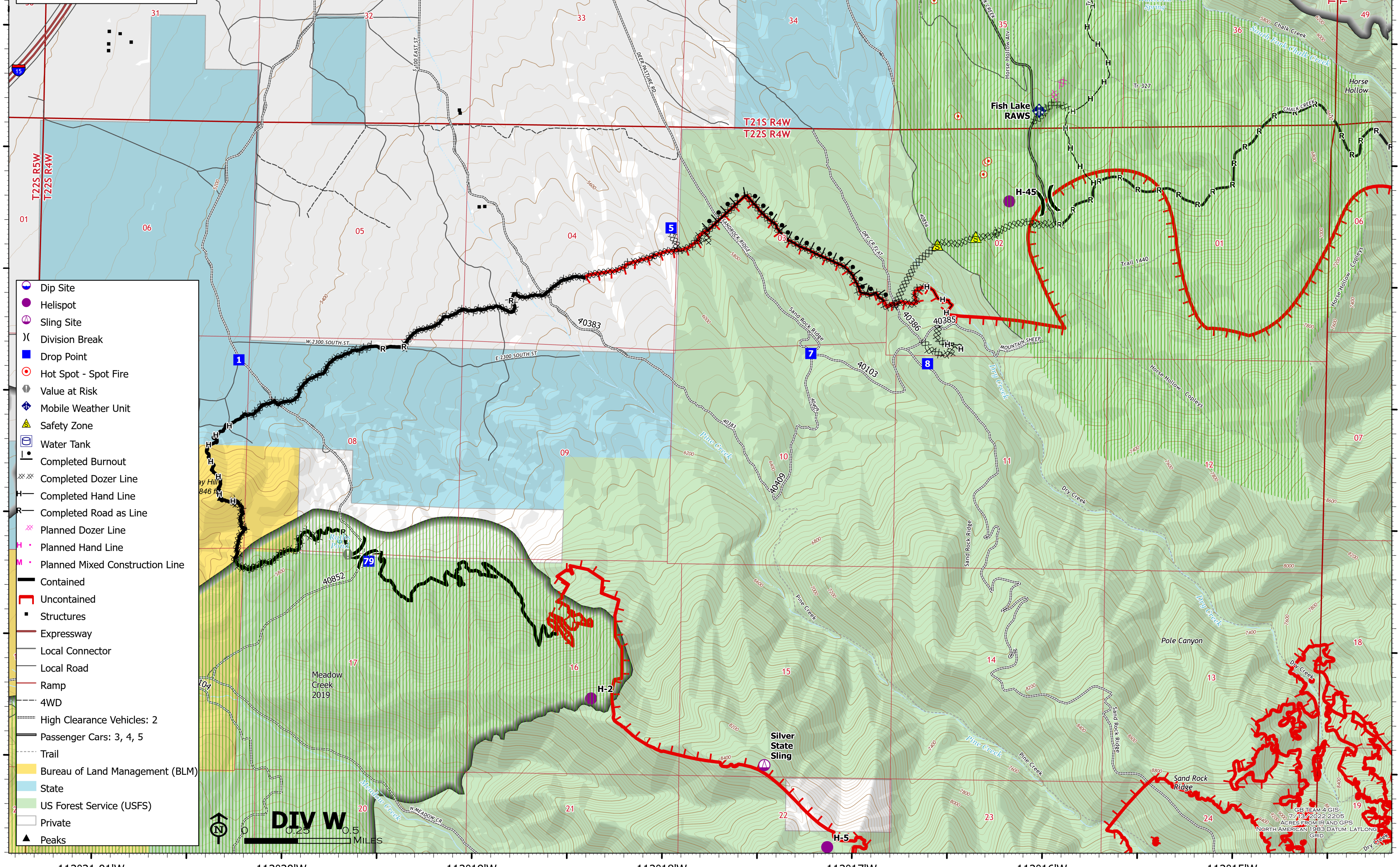
38°55'N

38°53.99'N

38°53.99'N

OPERATIONS
Div A
 HALFWAY HILL
 UT-SCS-220216
 7/14/2022 DAY
 11,637 ACRES AT 7/13/2022 @ 1002 MDT





- Dip Site
- Helispot
- Sling Site
- Division Break
- Drop Point
- Hot Spot - Spot Fire
- Value at Risk
- Mobile Weather Unit
- Safety Zone
- Water Tank
- Completed Burnout
- Completed Dozer Line
- Completed Hand Line
- Completed Road as Line
- Planned Dozer Line
- Planned Hand Line
- Planned Mixed Construction Line
- Contained
- Uncontained
- Structures
- Expressway
- Local Connector
- Local Road
- Ramp
- 4WD
- High Clearance Vehicles: 2
- Passenger Cars: 3, 4, 5
- Trail
- Bureau of Land Management (BLM)
- State
- US Forest Service (USFS)
- Private
- Peaks

Div W




GB TEAM 4 GIS
 7/13/2022 2205
 ACRES FROM IIR AND GPS
 NORTH AMERICAN 1983 DATUM, LAT/LONG
 GRID