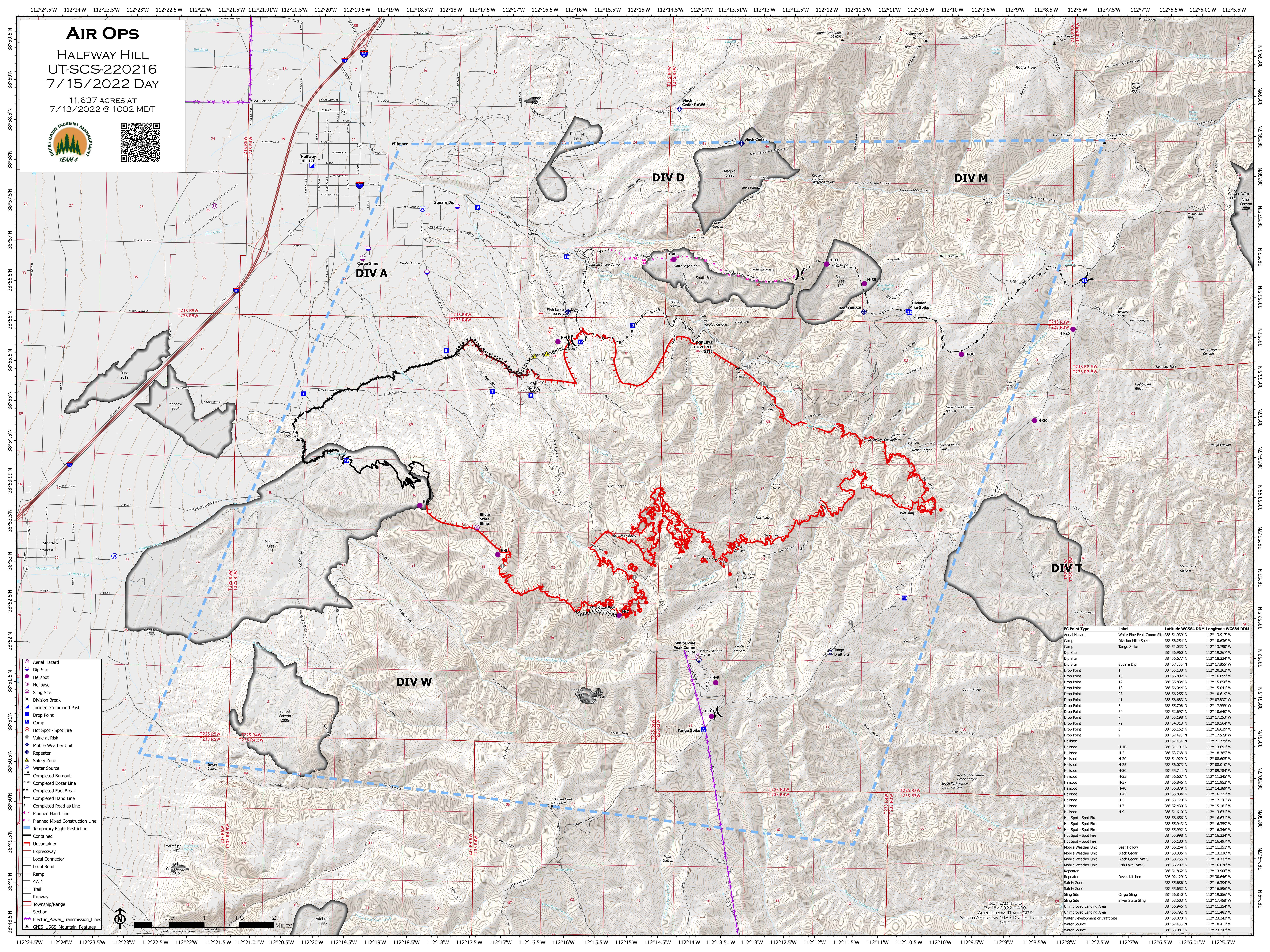


# AIR OPS

## HALFWAY HILL UT-SCS-220216 7/15/2022 DAY

11,637 ACRES AT  
7/13/2022 @ 1002 MDT



- Aerial Hazard
- Dip Site
- Helibase
- Sling Site
- Division Break
- Incident Command Post
- Drop Point
- Camp
- Hot Spot - Spot Fire
- Value at Risk
- Mobile Weather Unit
- Repeater
- Safety Zone
- Water Source
- Completed Burnout
- Completed Dozer Line
- Completed Fuel Break
- Completed Hand Line
- Completed Road as Line
- Planned Hand Line
- Planned Mixed Construction Line
- Temporary Flight Restriction
- Contained
- Uncontained
- Expressway
- Local Connector
- Local Road
- Ramp
- 4WD
- Trail
- Runway
- Township/Range
- Section
- Electric Power Transmission Lines
- GNIS USGS Mountain Features

| FC Point Type                   | Label                     | Latitude WGS84 DDM | Longitude WGS84 DDM |
|---------------------------------|---------------------------|--------------------|---------------------|
| Aerial Hazard                   | White Pine Peak Comm Site | 38° 51.939' N      | 112° 13.917' W      |
| Camp                            | Division Mike Spike       | 38° 56.254' N      | 112° 10.636' W      |
| Camp                            | Tango Spike               | 38° 51.033' N      | 112° 13.790' W      |
| Dip Site                        |                           | 38° 56.960' N      | 112° 19.267' W      |
| Dip Site                        |                           | 38° 56.677' N      | 112° 18.324' W      |
| Dip Site                        |                           | 38° 57.500' N      | 112° 17.855' W      |
| Drop Point                      | Square Dip                | 38° 55.138' N      | 112° 20.262' W      |
| Drop Point                      | 1                         | 38° 56.892' N      | 112° 16.999' W      |
| Drop Point                      | 10                        | 38° 55.044' N      | 112° 15.858' W      |
| Drop Point                      | 12                        | 38° 56.044' N      | 112° 15.041' W      |
| Drop Point                      | 13                        | 38° 56.044' N      | 112° 15.041' W      |
| Drop Point                      | 28                        | 38° 56.255' N      | 112° 10.619' W      |
| Drop Point                      | 41                        | 38° 56.683' N      | 112° 07.837' W      |
| Drop Point                      | 5                         | 38° 55.706' N      | 112° 17.999' W      |
| Drop Point                      | 7                         | 38° 52.697' N      | 112° 10.640' W      |
| Drop Point                      | 7                         | 38° 55.388' N      | 112° 17.253' W      |
| Drop Point                      | 90                        | 38° 54.318' N      | 112° 19.564' W      |
| Drop Point                      | 9                         | 38° 55.162' N      | 112° 16.639' W      |
| Drop Point                      | 8                         | 38° 57.493' N      | 112° 17.529' W      |
| Helibase                        |                           | 38° 57.464' N      | 112° 21.729' W      |
| Helibase                        | H-10                      | 38° 51.191' N      | 112° 13.691' W      |
| Helibase                        | H-2                       | 38° 53.768' N      | 112° 18.395' W      |
| Helibase                        | H-20                      | 38° 54.929' N      | 112° 08.605' W      |
| Helibase                        | H-25                      | 38° 56.073' N      | 112° 08.010' W      |
| Helibase                        | H-30                      | 38° 55.744' N      | 112° 09.784' W      |
| Helibase                        | H-35                      | 38° 56.607' N      | 112° 11.345' W      |
| Helibase                        | H-37                      | 38° 56.646' N      | 112° 16.631' W      |
| Helibase                        | H-40                      | 38° 56.929' N      | 112° 14.389' W      |
| Helibase                        | H-45                      | 38° 55.834' N      | 112° 16.221' W      |
| Helibase                        | H-5                       | 38° 53.170' N      | 112° 17.131' W      |
| Helibase                        | H-7                       | 38° 52.430' N      | 112° 15.181' W      |
| Helibase                        | H-9                       | 38° 51.610' N      | 112° 13.631' W      |
| Hot Spot - Spot Fire            |                           | 38° 56.656' N      | 112° 16.631' W      |
| Hot Spot - Spot Fire            |                           | 38° 55.943' N      | 112° 16.399' W      |
| Hot Spot - Spot Fire            |                           | 38° 55.992' N      | 112° 16.346' W      |
| Hot Spot - Spot Fire            |                           | 38° 55.998' N      | 112° 16.334' W      |
| Hot Spot - Spot Fire            |                           | 38° 56.180' N      | 112° 16.497' W      |
| Mobile Weather Unit             | Bear Hollow               | 38° 56.254' N      | 112° 11.351' W      |
| Mobile Weather Unit             | Black Cedar               | 38° 58.755' N      | 112° 14.332' W      |
| Mobile Weather Unit             | Black Cedar RAWs          | 38° 58.755' N      | 112° 14.332' W      |
| Mobile Weather Unit             | Fish Lake RAWs            | 38° 56.207' N      | 112° 16.070' W      |
| Repeater                        | Devils Kitchen            | 38° 51.862' N      | 112° 13.906' W      |
| Repeater                        |                           | 39° 02.129' N      | 112° 30.646' W      |
| Safety Zone                     |                           | 38° 55.686' N      | 112° 16.394' W      |
| Safety Zone                     |                           | 38° 55.652' N      | 112° 16.396' W      |
| Sling Site                      | Cargo Sling               | 38° 56.840' N      | 112° 19.356' W      |
| Sling Site                      | Silver State Sling        | 38° 53.503' N      | 112° 17.468' W      |
| Unimproved Landing Area         |                           | 38° 56.945' N      | 112° 11.354' W      |
| Unimproved Landing Area         |                           | 38° 56.792' N      | 112° 11.481' W      |
| Water Development or Draft Site |                           | 38° 53.078' N      | 112° 23.243' W      |
| Water Source                    |                           | 38° 57.466' N      | 112° 18.411' W      |
| Water Source                    |                           | 38° 53.081' N      | 112° 23.242' W      |

UT-SCS-220216  
ACRES FROM IIR AND GPS  
7/15/2022 0428  
NORTH AMERICAN 1983 DATUM, LATLONG  
GRID