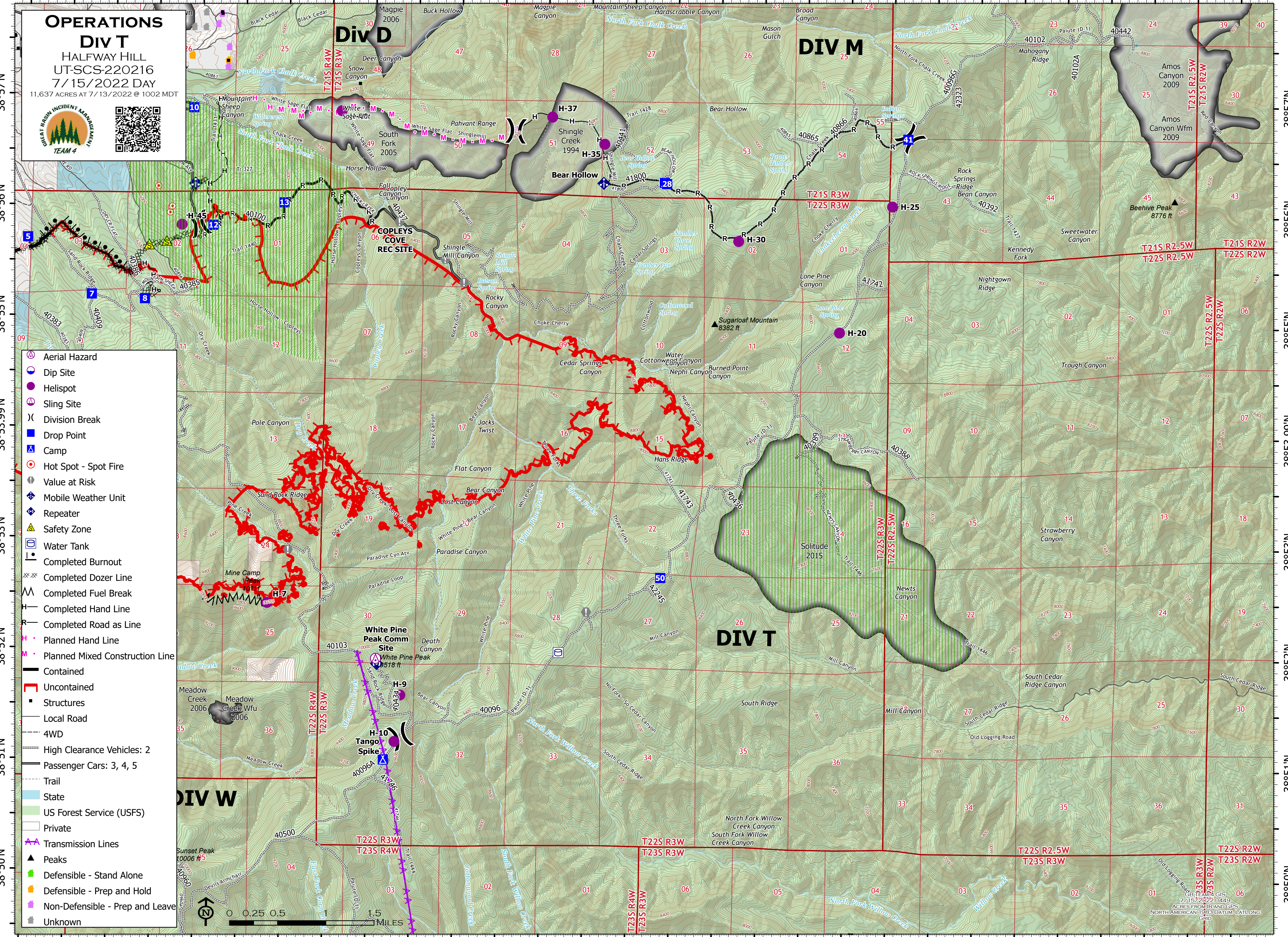


112°18'W 112°17'W 112°16'W 112°15'W 112°14'W 112°13'W 112°12'W 112°11'W 112°10'W 112°9'W 112°8'W 112°7'W 112°6.01'W 112°5'W 112°4'W



**OPERATIONS**  
**DIV T**  
 HALFWAY HILL  
 UT-SCS-220216  
 7/15/2022 DAY  
 11,637 ACRES AT 7/13/2022 @ 1002 MDT

- Aerial Hazard
- Dip Site
- Helispot
- Sling Site
- Division Break
- Drop Point
- Camp
- Hot Spot - Spot Fire
- Value at Risk
- Mobile Weather Unit
- Repeater
- Safety Zone
- Water Tank
- Completed Burnout
- Completed Dozer Line
- Completed Fuel Break
- Completed Hand Line
- Planned Hand Line
- Planned Mixed Construction Line
- Contained
- Uncontained
- Structures
- Local Road
- 4WD
- High Clearance Vehicles: 2
- Passenger Cars: 3, 4, 5
- Trail
- State
- US Forest Service (USFS)
- Private
- Transmission Lines
- Peaks
- Defensible - Stand Alone
- Defensible - Prep and Hold
- Non-Defensible - Prep and Leave
- Unknown



ESRI, Garmin, GIS  
 7/15/2022 0449  
 ACRES FROM IR AND GPS  
 NORTH AMERICAN 1983 DATUM, LAT/LONG  
 GRID