

112°17'W

112°16'W

112°15'W

112°14'W

112°13'W

112°12'W

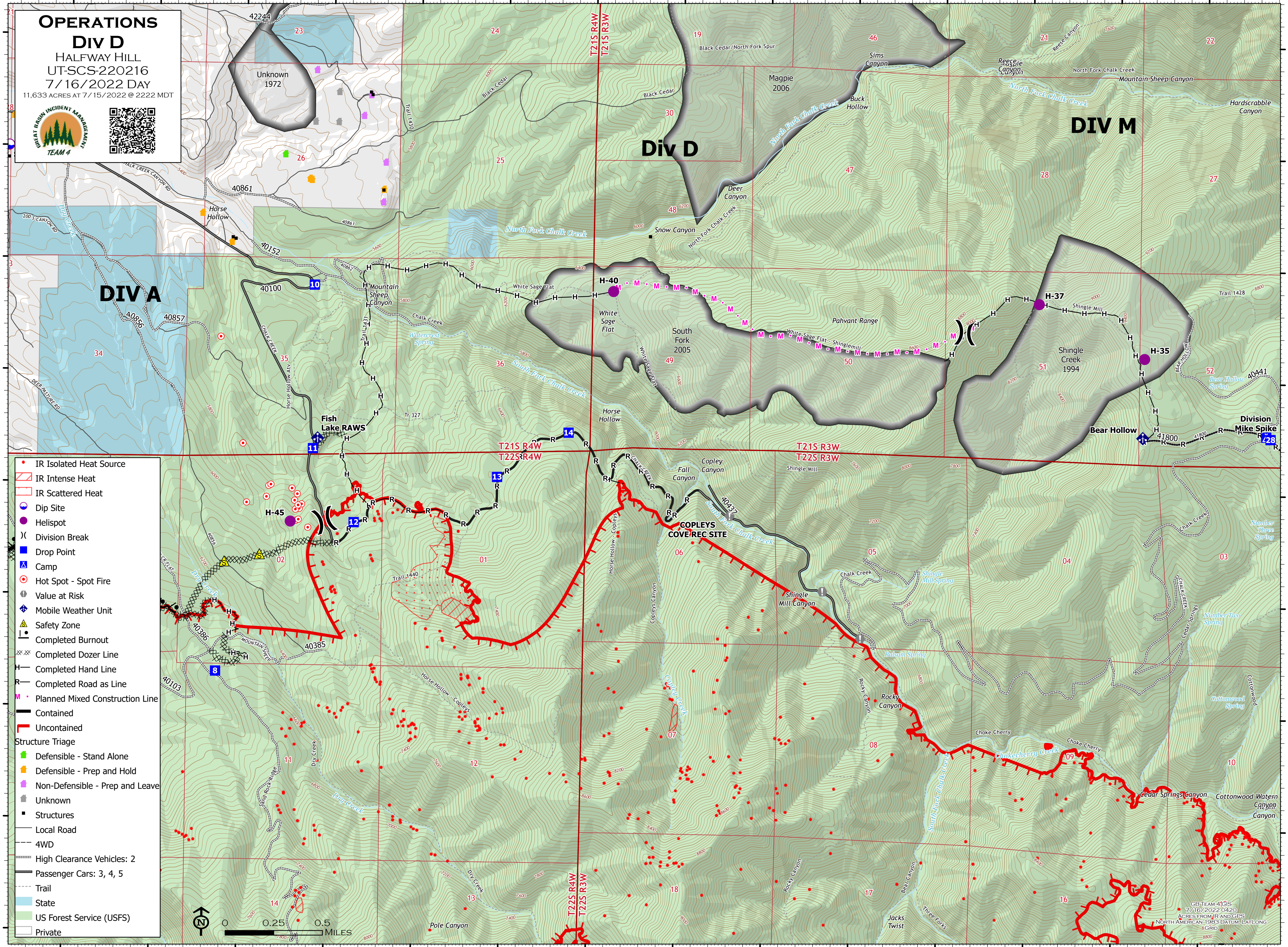
112°11'W

38°58'N  
38°57'N  
38°56'N  
38°55'N  
38°54'N  
38°53.99'N

38°58'N  
38°57'N  
38°56'N  
38°55'N  
38°54'N  
38°53.99'N

**OPERATIONS**  
**Div D**  
 HALFWAY HILL  
 UT-SCS-220216  
 7/16/2022 DAY  
 11,633 ACRES AT 7/15/2022 @ 2222 MDT





- IR Isolated Heat Source
- ▭ IR Intense Heat
- ▭ IR Scattered Heat
- Dip Site
- Helispot
- ⌘ Division Break
- Drop Point
- ▲ Camp
- Hot Spot - Spot Fire
- Value at Risk
- ◆ Mobile Weather Unit
- ▲ Safety Zone
- Completed Burnout
- ⊗ Completed Dozer Line
- Completed Hand Line
- Completed Road as Line
- Planned Mixed Construction Line
- Contained
- Uncontained
- Structure Triage
- Defensible - Stand Alone
- Defensible - Prep and Hold
- Non-Defensible - Prep and Leave
- Unknown
- Structures
- Local Road
- 4WD
- High Clearance Vehicles: 2
- Passenger Cars: 3, 4, 5
- Trail
- State
- US Forest Service (USFS)
- Private



GB TEAM 41515  
 7/16/2022 0420  
 ACRES FROM IR AND GPS  
 NORTH AMERICAN 1983 DATUM LAT/LONG  
 8 GRID  
 8800