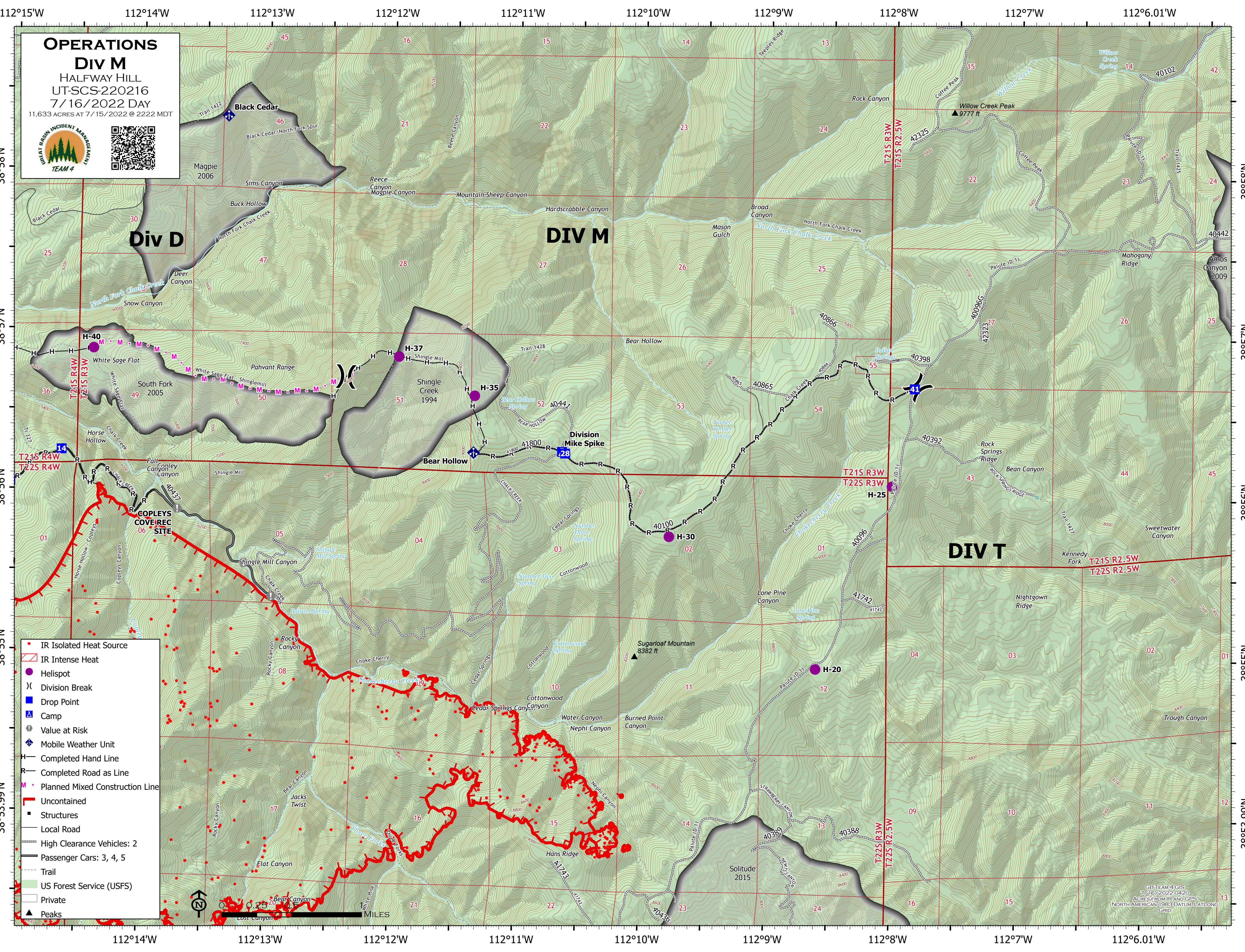


**OPERATIONS**  
**Div M**  
 HALFWAY HILL  
 UT-SCS-220216  
 7/16/2022 DAY  
 11,633 ACRES AT 7/15/2022 @ 2222 MDT




38°58'N  
38°57'N  
38°56'N  
38°55'N  
38°53.99'N

38°58'N  
38°57'N  
38°56'N  
38°55'N  
38°53.99'N



- IR Isolated Heat Source
- ▭ IR Intense Heat
- Helispot
- ⌘ Division Break
- Drop Point
- ▲ Camp
- ⊕ Value at Risk
- ◆ Mobile Weather Unit
- Completed Hand Line
- Completed Road as Line
- Planned Mixed Construction Line
- ▬ Uncontained
- Structures
- Local Road
- High Clearance Vehicles: 2
- Passenger Cars: 3, 4, 5
- Trail
- US Forest Service (USFS)
- Private
- ▲ Peaks



1 MILE

GB TEAM 4 GIS  
 7/16/2022 0420  
 ACRES FROM IR AND GPS  
 NORTH AMERICAN 1983 DATUM, LAT/LONG  
 GRID

112°15'W 112°14'W 112°13'W 112°12'W 112°11'W 112°10'W 112°9'W 112°8'W 112°7'W 112°6.01'W