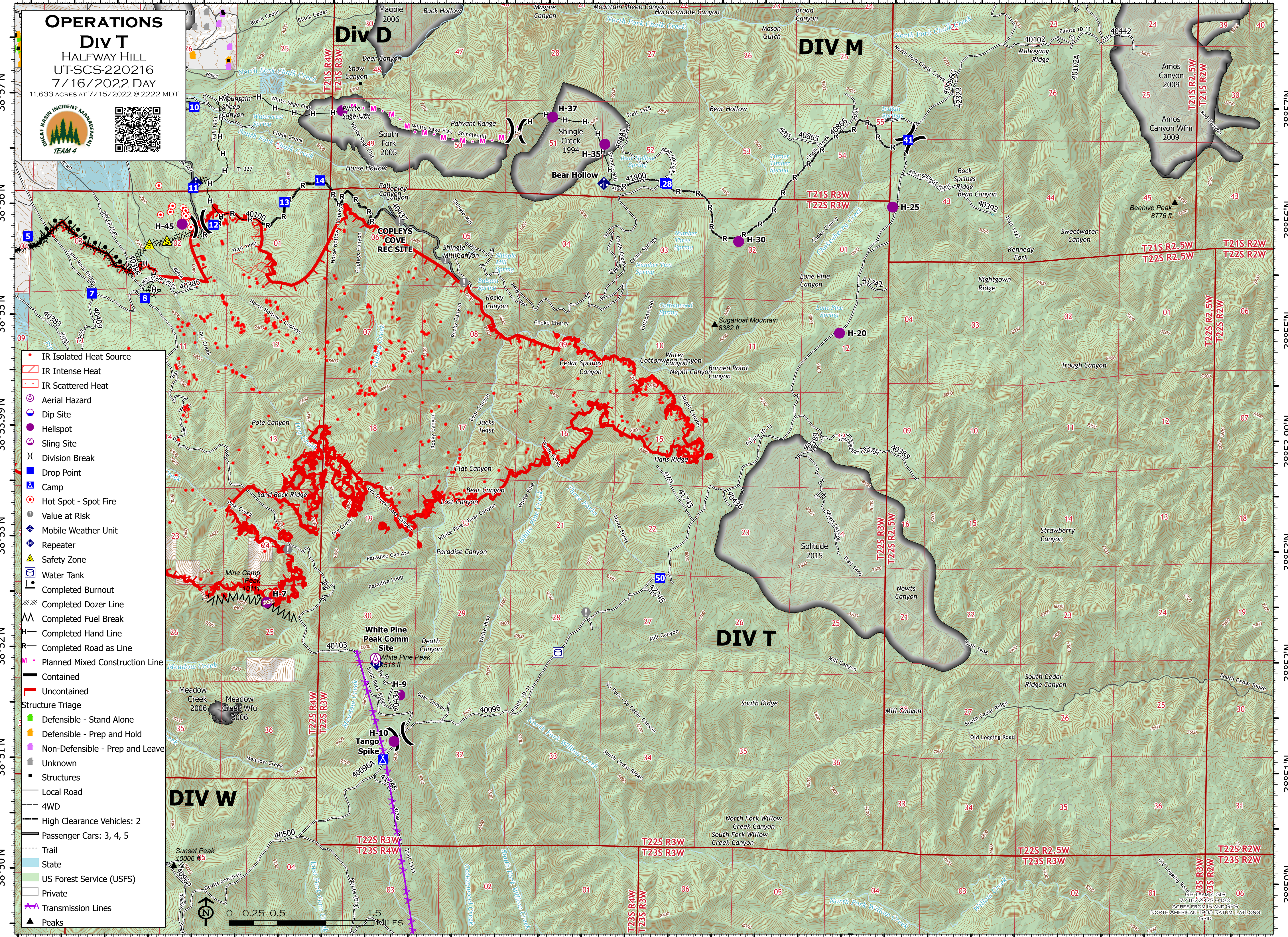


112°18'W 112°17'W 112°16'W 112°15'W 112°14'W 112°13'W 112°12'W 112°11'W 112°10'W 112°9'W 112°8'W 112°7'W 112°6.01'W 112°5'W 112°4'W



**OPERATIONS**  
**DIV T**  
 HALFWAY HILL  
 UT-SCS-220216  
 7/16/2022 DAY  
 11,633 ACRES AT 7/15/2022 @ 2222 MDT



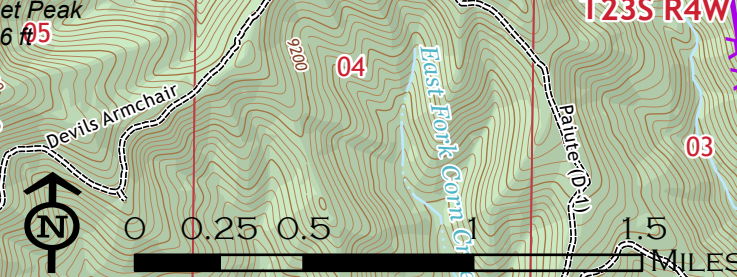

- IR Isolated Heat Source
- ▭ IR Intense Heat
- ◻ IR Scattered Heat
- ⊗ Aerial Hazard
- ⊙ Dip Site
- ⊙ Helispot
- ⊙ Sling Site
- ⊗ Division Break
- ⊙ Drop Point
- ⊙ Camp
- ⊙ Hot Spot - Spot Fire
- ⊙ Value at Risk
- ⊙ Mobile Weather Unit
- ⊙ Repeater
- ⊙ Safety Zone
- ⊙ Water Tank
- ⊙ Completed Burnout
- ⊙ Completed Dozer Line
- ⊙ Completed Fuel Break
- ⊙ Completed Hand Line
- ⊙ Completed Road as Line
- ⊙ Planned Mixed Construction Line
- ▭ Contained
- ▭ Uncontained
- Structure Triage
- ▭ Defensible - Stand Alone
- ▭ Defensible - Prep and Hold
- ▭ Non-Defensible - Prep and Leave
- ▭ Unknown
- ▭ Structures
- ▭ Local Road
- ▭ 4WD
- ▭ High Clearance Vehicles: 2
- ▭ Passenger Cars: 3, 4, 5
- ▭ Trail
- ▭ State
- ▭ US Forest Service (USFS)
- ▭ Private
- ▭ Transmission Lines
- ▭ Peaks

**DIV W**

**DIV D**

**DIV M**

**DIV T**



ESRI, DE LIMA, GIS  
 7/16/2022 0420  
 ACRES FROM IR AND GPS  
 NORTH AMERICAN 1983 DATUM, LAT/LONG  
 GRID

112°18'W 112°17'W 112°16'W 112°15'W 112°14'W 112°13'W 112°12'W 112°11'W 112°10'W 112°9'W 112°8'W 112°7'W 112°6.01'W 112°5'W 112°4'W