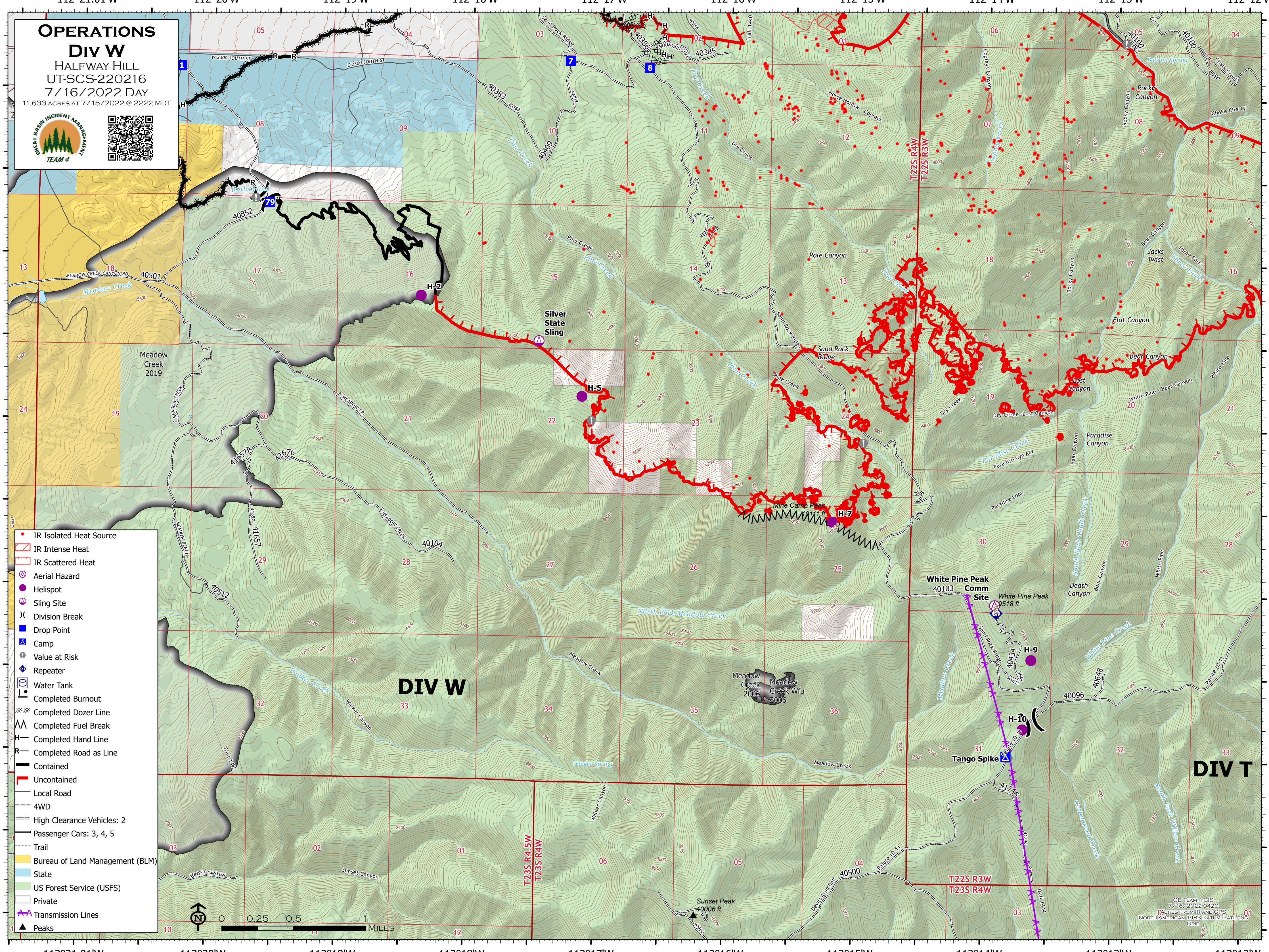


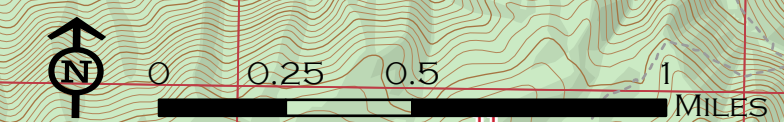
**OPERATIONS**  
**Div W**  
 HALFWAY HILL  
 UT-SCS-220216  
 7/16/2022 DAY  
 11,633 ACRES AT 7/15/2022 @ 2222 MDT



GREAT BASIN INCIDENT MANAGEMENT  
**TEAM 4**

- IR Isolated Heat Source
- ▭ IR Intense Heat
- ▭ IR Scattered Heat
- ⊙ Aerial Hazard
- Helispot
- ⊙ Sling Site
- ⌵ Division Break
- ▣ Drop Point
- ⊙ Camp
- ⊙ Value at Risk
- ⊙ Repeater
- ⊙ Water Tank
- ⊙ Completed Burnout
- ⊙ Completed Dozer Line
- ⊙ Completed Fuel Break
- ⊙ Completed Hand Line
- ⊙ Completed Road as Line
- ▭ Contained
- ▭ Uncontained
- ▭ Local Road
- ▭ 4WD
- ▭ High Clearance Vehicles: 2
- ▭ Passenger Cars: 3, 4, 5
- ▭ Trail
- ▭ Bureau of Land Management (BLM)
- ▭ State
- ▭ US Forest Service (USFS)
- ▭ Private
- ▭ Transmission Lines
- ▲ Peaks



GB TEAM 4 GIS  
 7/16/2022 0420  
 (ACRES FROM IR AND GPS)  
 NORTH AMERICAN 1983 DATUM: LAT/LONG  
 GRID