

112°17'W

112°16'W

112°15'W

112°14'W

112°13'W

112°12'W

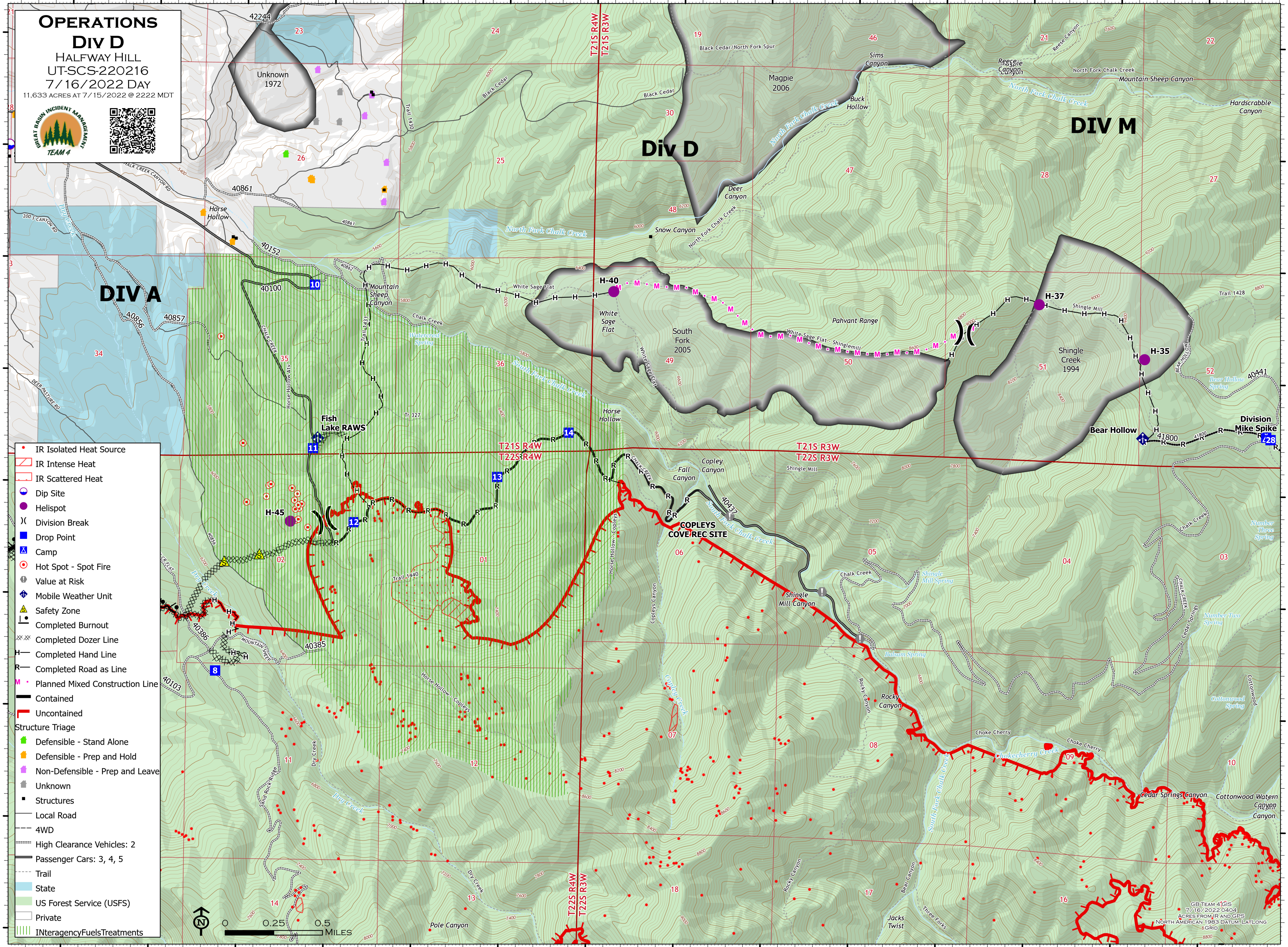
112°11'W

38°58'N
38°57'N
38°56'N
38°55'N
38°54'N
38°53.99'N

38°58'N
38°57'N
38°56'N
38°55'N
38°54'N
38°53.99'N

OPERATIONS
Div D
 HALFWAY HILL
 UT-SCS-220216
 7/16/2022 DAY
 11,633 ACRES AT 7/15/2022 @ 2222 MDT





- IR Isolated Heat Source
- ◻ IR Intense Heat
- ◻ IR Scattered Heat
- Dip Site
- Helispot
- ⌵ Division Break
- Drop Point
- Camp
- Hot Spot - Spot Fire
- Value at Risk
- Mobile Weather Unit
- Safety Zone
- Completed Burnout
- Completed Dozer Line
- Completed Hand Line
- Completed Road as Line
- Planned Mixed Construction Line
- Contained
- Uncontained
- Structure Triage
- Defensible - Stand Alone
- Defensible - Prep and Hold
- Non-Defensible - Prep and Leave
- Unknown
- Structures
- Local Road
- 4WD
- High Clearance Vehicles: 2
- Passenger Cars: 3, 4, 5
- Trail
- State
- US Forest Service (USFS)
- Private
- Interagency Fuels Treatments



GB TEAM 4 GIS
 7/16/2022 0404
 ACRES FROM IR AND GPS
 NORTH AMERICAN 1983 DATUM LAT/LONG
 8 GRID