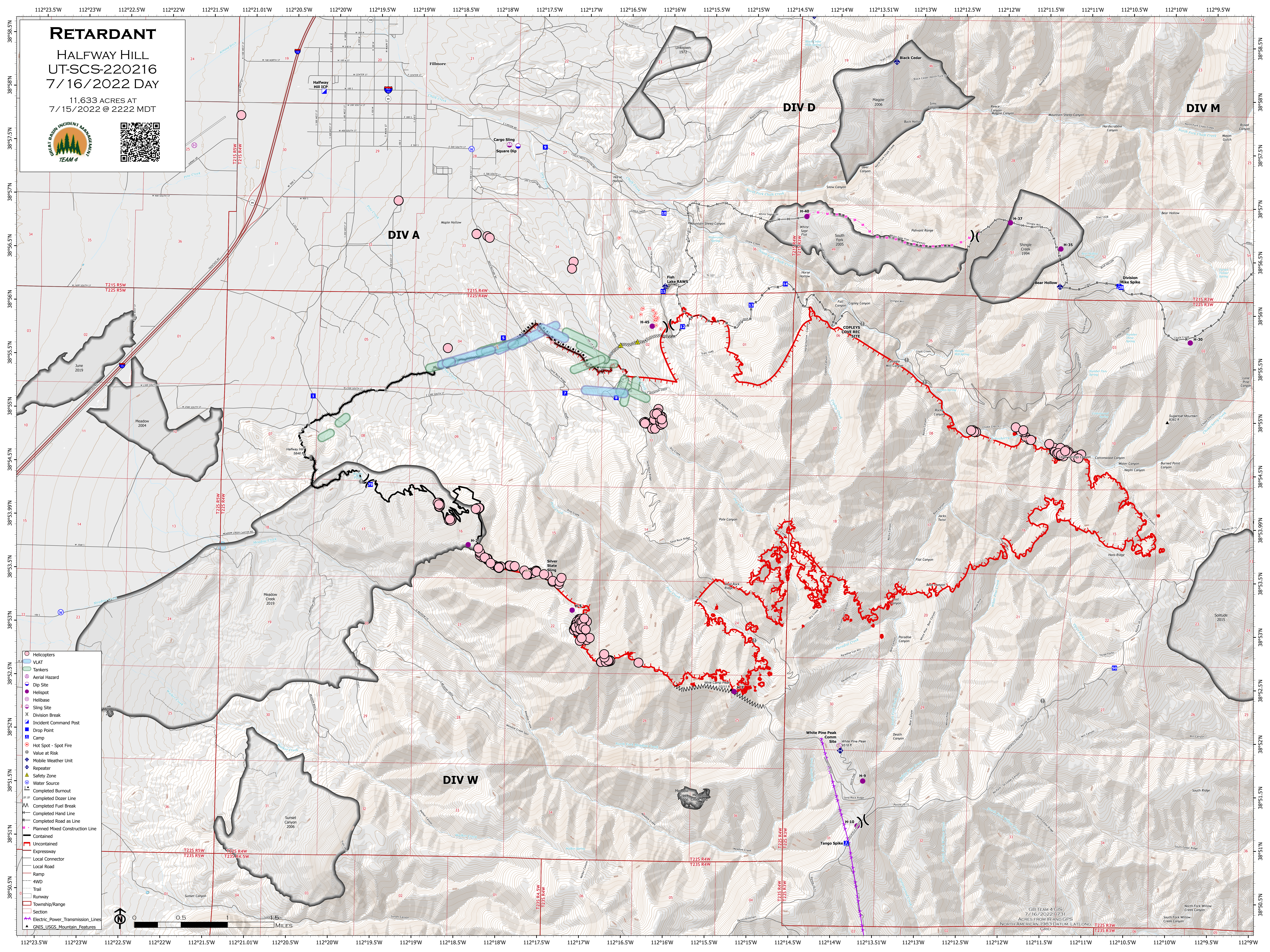


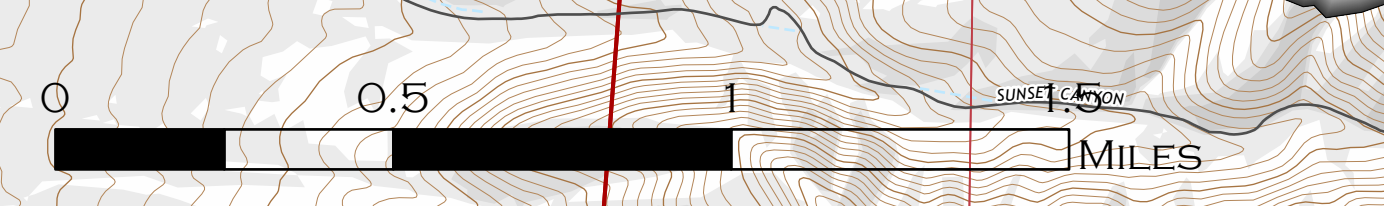
# RETARDANT

HALFWAY HILL  
UT-SCS-220216  
7/16/2022 DAY

11,633 ACRES AT  
7/15/2022 @ 2222 MDT



- Helicopters
- VLAT
- Tankers
- Aerial Hazard
- Dip Site
- Helispot
- Helibase
- Sling Site
- Division Break
- Incident Command Post
- Drop Point
- Camp
- Hot Spot - Spot Fire
- Value at Risk
- Mobile Weather Unit
- Repeater
- Safety Zone
- Water Source
- Completed Burnout
- Completed Dozer Line
- Completed Fuel Break
- Completed Hand Line
- Completed Road as Line
- Planned Mixed Construction Line
- Contained
- Uncontained
- Expressway
- Local Connector
- Local Road
- Ramp
- 4WD
- Trail
- Runway
- Township/Range
- Section
- Electric Power Transmission Lines
- GNIS USGS Mountain Features



GB TEAM 4 GIS  
7/16/2022 07:31  
ACRES FROM IR AND GPS  
NORTH AMERICAN 1983 DATUM, LAT/LONG  
T225 B3W  
GRID