

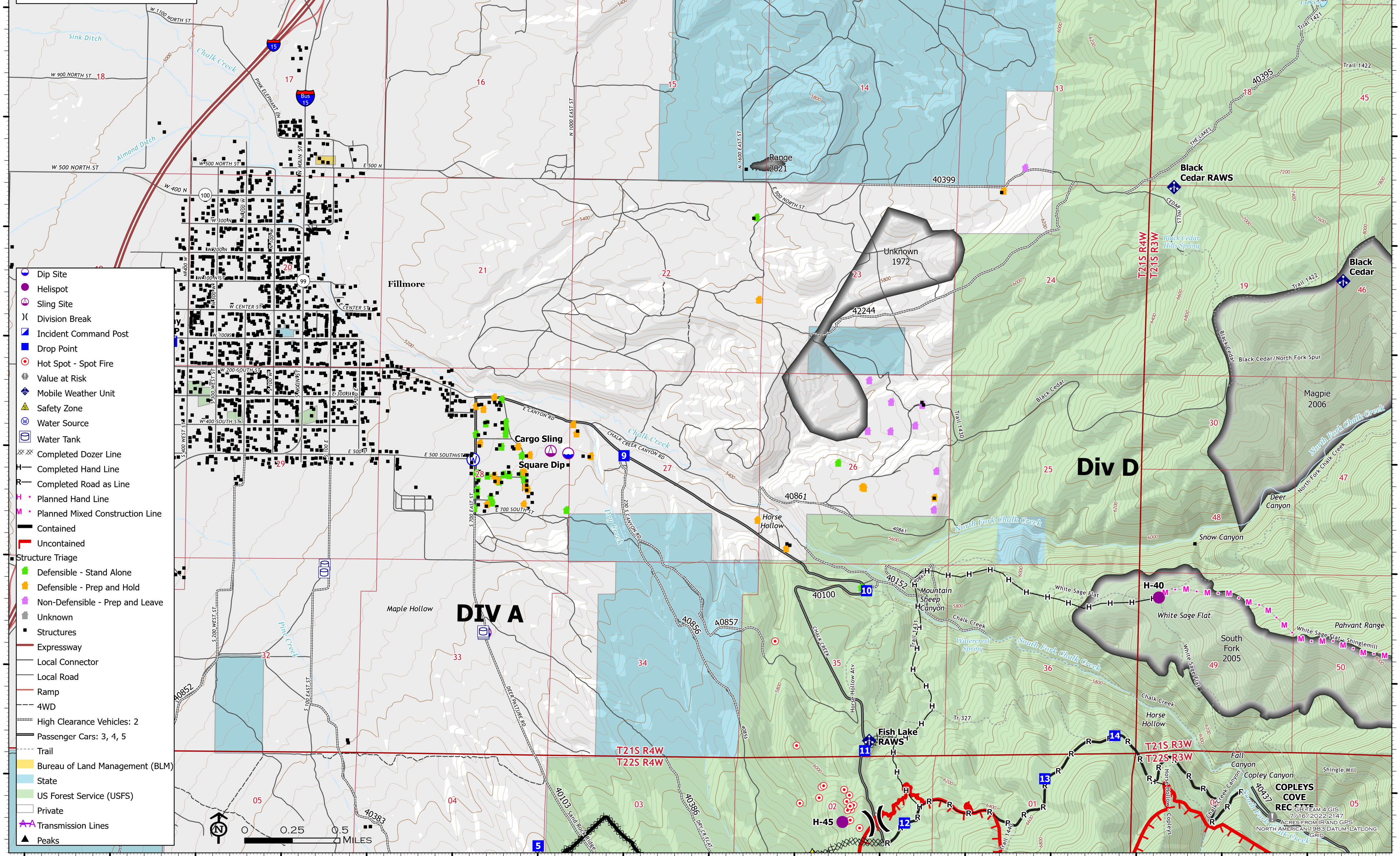


112°21.01'W 112°20'W 112°19'W 112°18'W 112°17'W 112°16'W 112°15'W 112°14'W

**OPERATIONS STRUCTURES**  
 HALFWAY HILL  
 UT-SCS-220216  
 7/17/2022 DAY  
 11,633 ACRES AT 7/15/2022 @ 2222 MDT

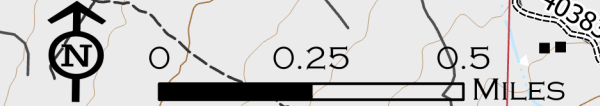




- Dip Site
- Helispot
- Sling Site
- Division Break
- Incident Command Post
- Drop Point
- Hot Spot - Spot Fire
- Value at Risk
- Mobile Weather Unit
- Safety Zone
- Water Source
- Water Tank
- Completed Dozer Line
- Completed Hand Line
- Completed Road as Line
- Planned Hand Line
- Planned Mixed Construction Line
- Contained
- Uncontained
- Structure Triage
- Defensible - Stand Alone
- Defensible - Prep and Hold
- Non-Defensible - Prep and Leave
- Unknown
- Structures
- Expressway
- Local Connector
- Local Road
- Ramp
- 4WD
- High Clearance Vehicles: 2
- Passenger Cars: 3, 4, 5
- Trail
- Bureau of Land Management (BLM)
- State
- US Forest Service (USFS)
- Private
- Transmission Lines
- Peaks

112°21.01'W 112°20'W 112°19'W 112°18'W 112°17'W 112°16'W 112°15'W 112°14'W

39°N 38°59'N 38°58'N 38°57'N 38°56'N

39°N 38°59'N 38°58'N 38°57'N 38°56'N



COPLEY COVE REC SITE  
 40337  
 11,633 ACRES FROM IIR AND GPS  
 7/16/2022 2147  
 NORTH AMERICAN 1983 DATUM: LAT/LONG  
 GRID