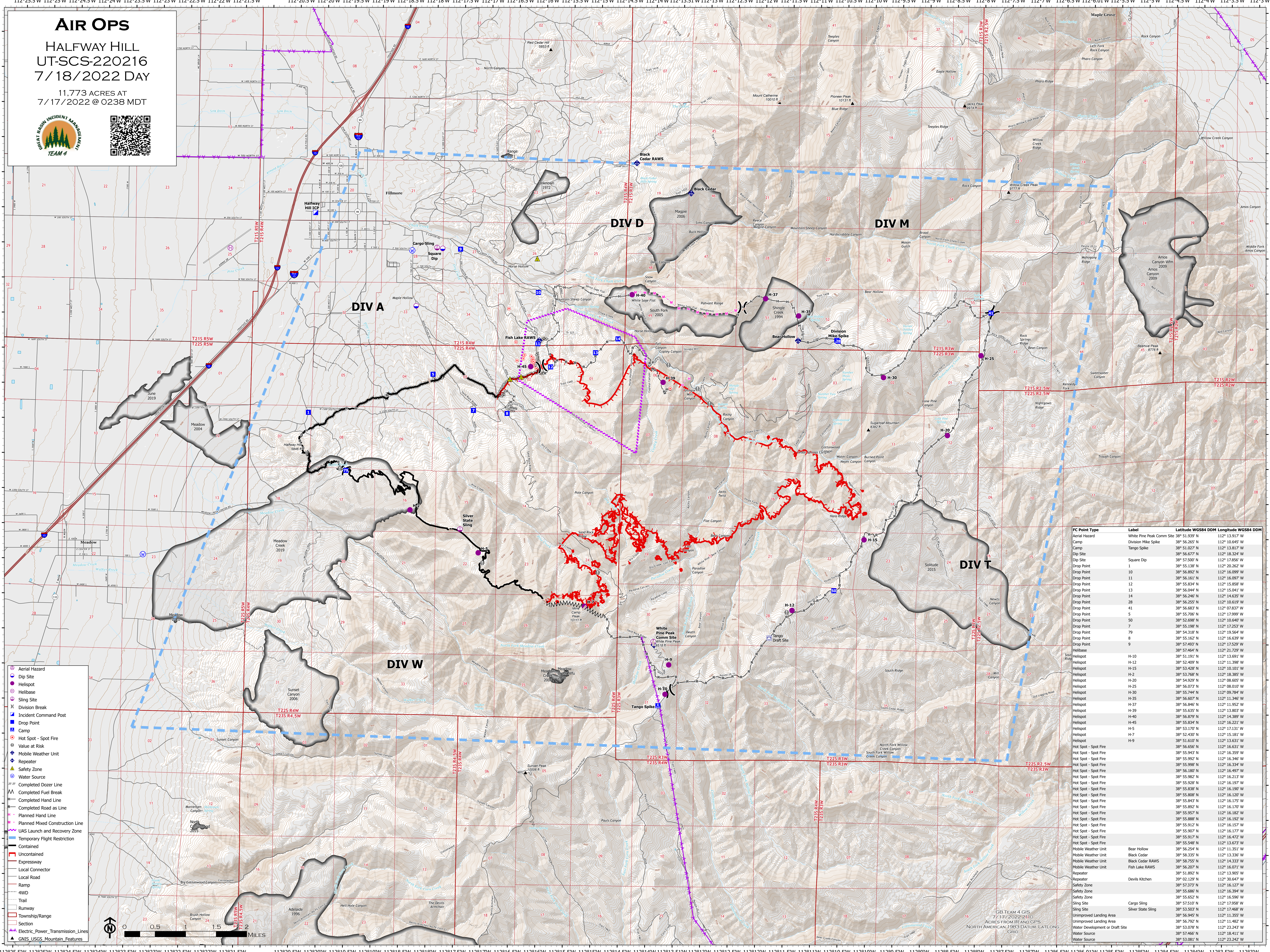


# AIR OPS

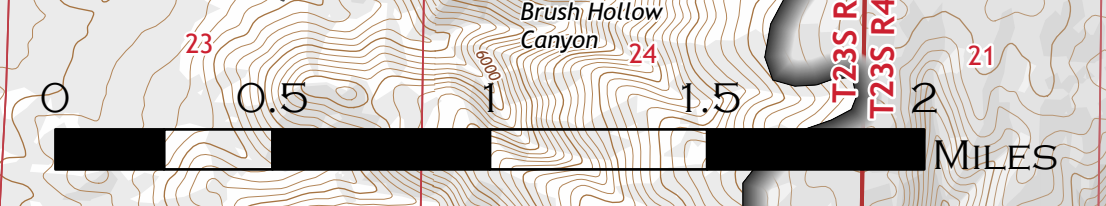
HALFWAY HILL  
UT-SCS-220216  
7/18/2022 DAY

11,773 ACRES AT  
7/17/2022 @ 0238 MDT



FC Point Type	Label	Latitude WGS84 DDM	Longitude WGS84 DDM
Aerial Hazard	White Pine Peak Comm Site	38° 51.939' N	112° 13.917' W
Camp	Division Mike Spike	38° 56.645' N	112° 16.945' W
Camp	Tango Spike	38° 51.027' N	112° 18.317' W
Dip Site		38° 56.677' N	112° 18.324' W
Dip Site	Square Dip	38° 57.500' N	112° 17.856' W
Drop Point	1	38° 55.138' N	112° 20.262' W
Drop Point	10	38° 56.892' N	112° 16.099' W
Drop Point	11	38° 56.611' N	112° 16.997' W
Drop Point	12	38° 55.834' N	112° 15.858' W
Drop Point	13	38° 56.044' N	112° 15.041' W
Drop Point	14	38° 56.246' N	112° 14.635' W
Drop Point	28	38° 56.255' N	112° 16.619' W
Drop Point	41	38° 56.683' N	112° 07.837' W
Drop Point	5	38° 55.706' N	112° 17.999' W
Drop Point	50	38° 52.698' N	112° 10.640' W
Drop Point	7	38° 55.198' N	112° 17.253' W
Drop Point	79	38° 54.318' N	112° 19.564' W
Drop Point	8	38° 55.162' N	112° 16.639' W
Drop Point	9	38° 57.493' N	112° 17.529' W
Drop Point	H-10	38° 57.464' N	112° 21.729' W
Drop Point	H-11	38° 51.191' N	112° 13.691' W
Drop Point	H-12	38° 52.409' N	112° 11.398' W
Drop Point	H-15	38° 53.428' N	112° 10.101' W
Drop Point	H-2	38° 53.768' N	112° 18.385' W
Drop Point	H-20	38° 54.929' N	112° 08.605' W
Drop Point	H-25	38° 56.073' N	112° 08.017' W
Drop Point	H-30	38° 55.744' N	112° 09.794' W
Drop Point	H-35	38° 56.607' N	112° 11.346' W
Drop Point	H-37	38° 56.846' N	112° 11.952' W
Drop Point	H-39	38° 55.635' N	112° 13.803' W
Drop Point	H-40	38° 56.879' N	112° 14.389' W
Drop Point	H-45	38° 55.824' N	112° 16.221' W
Drop Point	H-5	38° 53.170' N	112° 17.131' W
Drop Point	H-7	38° 52.430' N	112° 15.181' W
Drop Point	H-9	38° 51.610' N	112° 13.631' W
Hot Spot - Spot Fire		38° 56.656' N	112° 16.631' W
Hot Spot - Spot Fire		38° 55.943' N	112° 16.399' W
Hot Spot - Spot Fire		38° 55.992' N	112° 16.346' W
Hot Spot - Spot Fire		38° 55.998' N	112° 16.334' W
Hot Spot - Spot Fire		38° 56.180' N	112° 16.497' W
Hot Spot - Spot Fire		38° 55.982' N	112° 16.213' W
Hot Spot - Spot Fire		38° 55.928' N	112° 16.197' W
Hot Spot - Spot Fire		38° 55.838' N	112° 16.190' W
Hot Spot - Spot Fire		38° 55.808' N	112° 16.107' W
Hot Spot - Spot Fire		38° 55.843' N	112° 16.175' W
Hot Spot - Spot Fire		38° 55.892' N	112° 16.170' W
Hot Spot - Spot Fire		38° 55.957' N	112° 16.182' W
Hot Spot - Spot Fire		38° 55.888' N	112° 16.192' W
Hot Spot - Spot Fire		38° 55.912' N	112° 16.157' W
Hot Spot - Spot Fire		38° 55.807' N	112° 16.177' W
Hot Spot - Spot Fire		38° 55.917' N	112° 16.472' W
Hot Spot - Spot Fire		38° 55.548' N	112° 13.673' W
Mobile Weather Unit		38° 56.254' N	112° 11.351' W
Mobile Weather Unit	Black Cedar	38° 58.335' N	112° 13.336' W
Mobile Weather Unit	Black Cedar RAWS	38° 56.207' N	112° 16.071' W
Mobile Weather Unit	Fish Lake RAWS	38° 56.207' N	112° 16.071' W
Repeater		38° 51.892' N	112° 13.905' W
Repeater	Devils Kitchen	39° 02.129' N	112° 30.647' W
Safety Zone		38° 57.373' N	112° 16.127' W
Safety Zone		38° 55.686' N	112° 16.394' W
Safety Zone		38° 55.652' N	112° 16.596' W
Sling Site		38° 57.510' N	112° 17.958' W
Sling Site	Cargo Sling	38° 53.503' N	112° 17.468' W
Sling Site	Silver State Sling	38° 53.503' N	112° 17.468' W
Unimproved Landing Area		38° 56.945' N	112° 11.355' W
Unimproved Landing Area		38° 56.792' N	112° 11.482' W
Water Development or Draft Site		38° 53.078' N	112° 23.243' W
Water Source		38° 57.460' N	112° 18.411' W
Water Source		38° 53.081' N	112° 23.242' W

- Aerial Hazard
- Dip Site
- Helispot
- Helibase
- Sling Site
- Division Break
- Incident Command Post
- Drop Point
- Camp
- Hot Spot - Spot Fire
- Value at Risk
- Mobile Weather Unit
- Repeater
- Safety Zone
- Water Source
- Completed Dozer Line
- Completed Fuel Break
- Completed Hand Line
- Completed Road as Line
- Planned Hand Line
- Planned Mixed Construction Line
- UAS Launch and Recovery Zone
- Temporary Flight Restriction
- Contained
- Expressway
- Local Connector
- Local Road
- Ramp
- 4WD
- Trail
- Runway
- Township/Range
- Section
- Electric Power Transmission Lines
- GNIS USGS Mountain Features



GB TEAM 4 GIS  
7/17/2022-2110  
ACRES FROM IR AND GPS  
NORTH AMERICAN 1983 DATUM, LATLONG GRID