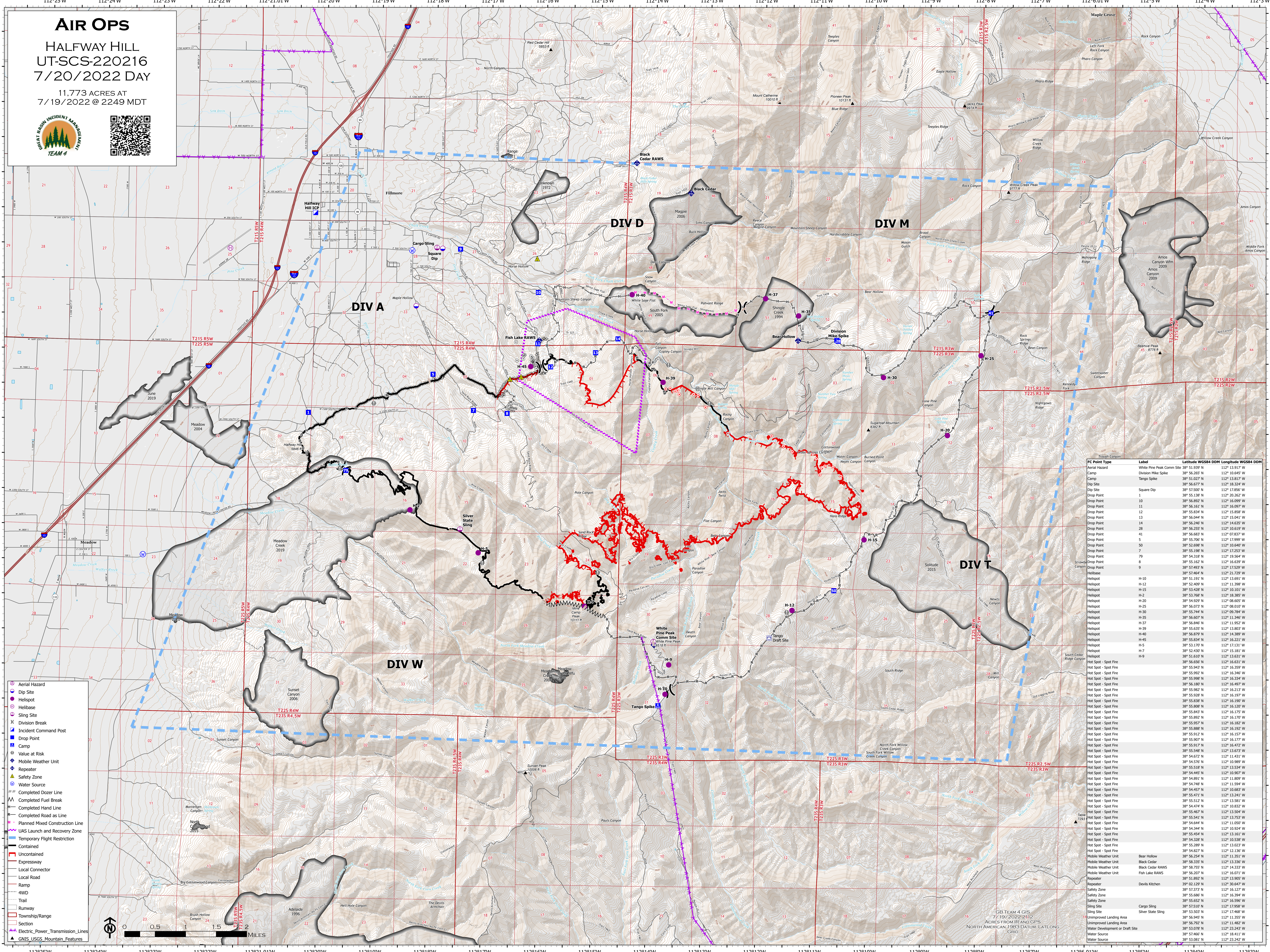


AIR OPS

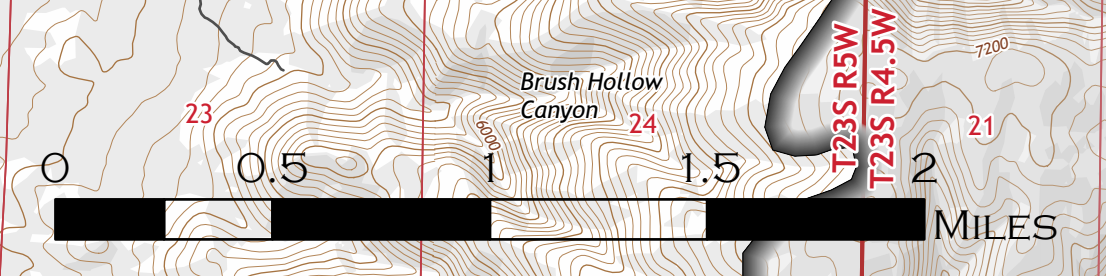
HALFWAY HILL
UT-SCS-220216
7/20/2022 DAY

11,773 ACRES AT
7/19/2022 @ 2249 MDT



- Aerial Hazard
- Dip Site
- Helispot
- Helibase
- Sling Site
- Division Break
- Incident Command Post
- Drop Point
- Camp
- Value at Risk
- Mobile Weather Unit
- Repeater
- Safety Zone
- Water Source
- Completed Dozer Line
- Completed Fuel Break
- Completed Hand Line
- Completed Road as Line
- Planned Mixed Construction Line
- UAS Launch and Recovery Zone
- Temporary Flight Restriction
- Contained
- Uncontained
- Expressway
- Local Connector
- Local Road
- Ramp
- 4WD
- Trail
- Runway
- Township/Range
- Section
- Electric Power Transmission Lines
- GNIS USGS Mountain Features

Label	Latitude WGS84 DDM	Longitude WGS84 DDM
Aerial Hazard	38° 51.939' N	112° 13.917' W
White Pine Peak Comm Site	38° 51.939' N	112° 13.917' W
Division Mike Spike	38° 56.265' N	112° 10.645' W
Tango Spike	38° 56.877' N	112° 13.817' W
Square Dip	38° 57.507' N	112° 17.856' W
Drop Point 1	38° 55.138' N	112° 20.262' W
Drop Point 10	38° 56.892' N	112° 16.099' W
Drop Point 11	38° 56.161' N	112° 16.097' W
Drop Point 12	38° 56.834' N	112° 15.858' W
Drop Point 13	38° 56.044' N	112° 15.041' W
Drop Point 14	38° 56.240' N	112° 14.635' W
Drop Point 28	38° 56.253' N	112° 10.619' W
Drop Point 41	38° 55.817' N	112° 03.827' W
Drop Point 5	38° 55.706' N	112° 17.999' W
Drop Point 50	38° 52.688' N	112° 10.640' W
Drop Point 7	38° 55.198' N	112° 17.253' W
Drop Point 79	38° 52.487' N	112° 15.554' W
Drop Point 8	38° 55.162' N	112° 16.639' W
Drop Point 9	38° 57.493' N	112° 17.529' W
Helibase	38° 57.464' N	112° 21.729' W
Helispot H-10	38° 51.191' N	112° 13.891' W
Helispot H-12	38° 53.409' N	112° 11.398' W
Helispot H-15	38° 53.428' N	112° 10.101' W
Helispot H-2	38° 53.768' N	112° 18.385' W
Helispot H-20	38° 54.929' N	112° 08.605' W
Helispot H-25	38° 56.078' N	112° 08.019' W
Helispot H-30	38° 55.744' N	112° 09.784' W
Helispot H-35	38° 56.607' N	112° 11.346' W
Helispot H-37	38° 56.840' N	112° 11.952' W
Helispot H-39	38° 55.835' N	112° 13.803' W
Helispot H-40	38° 56.879' N	112° 14.389' W
Helispot H-45	38° 55.834' N	112° 16.221' W
Helispot H-5	38° 53.170' N	112° 17.131' W
Helispot H-9	38° 52.407' N	112° 15.881' W
Hot Spot - Spot Fire	38° 51.610' N	112° 13.631' W
Hot Spot - Spot Fire	38° 56.656' N	112° 16.631' W
Hot Spot - Spot Fire	38° 55.943' N	112° 16.359' W
Hot Spot - Spot Fire	38° 55.992' N	112° 16.346' W
Hot Spot - Spot Fire	38° 56.180' N	112° 16.334' W
Hot Spot - Spot Fire	38° 56.180' N	112° 16.497' W
Hot Spot - Spot Fire	38° 55.982' N	112° 16.213' W
Hot Spot - Spot Fire	38° 55.928' N	112° 16.197' W
Hot Spot - Spot Fire	38° 55.899' N	112° 16.199' W
Hot Spot - Spot Fire	38° 55.868' N	112° 16.120' W
Hot Spot - Spot Fire	38° 55.843' N	112° 16.175' W
Hot Spot - Spot Fire	38° 55.882' N	112° 16.170' W
Hot Spot - Spot Fire	38° 55.858' N	112° 16.162' W
Hot Spot - Spot Fire	38° 55.888' N	112° 16.152' W
Hot Spot - Spot Fire	38° 55.912' N	112° 16.157' W
Hot Spot - Spot Fire	38° 55.907' N	112° 16.177' W
Hot Spot - Spot Fire	38° 55.971' N	112° 16.472' W
Hot Spot - Spot Fire	38° 55.948' N	112° 16.472' W
Hot Spot - Spot Fire	38° 54.672' N	112° 11.431' W
Hot Spot - Spot Fire	38° 54.570' N	112° 10.989' W
Hot Spot - Spot Fire	38° 55.518' N	112° 13.534' W
Hot Spot - Spot Fire	38° 54.748' N	112° 11.594' W
Hot Spot - Spot Fire	38° 54.891' N	112° 11.809' W
Hot Spot - Spot Fire	38° 54.748' N	112° 11.594' W
Hot Spot - Spot Fire	38° 54.457' N	112° 10.687' W
Hot Spot - Spot Fire	38° 55.237' N	112° 13.241' W
Hot Spot - Spot Fire	38° 55.512' N	112° 13.581' W
Hot Spot - Spot Fire	38° 54.474' N	112° 10.832' W
Hot Spot - Spot Fire	38° 55.467' N	112° 13.504' W
Hot Spot - Spot Fire	38° 55.565' N	112° 17.468' W
Hot Spot - Spot Fire	38° 54.644' N	112° 11.050' W
Hot Spot - Spot Fire	38° 54.344' N	112° 10.924' W
Hot Spot - Spot Fire	38° 55.454' N	112° 13.161' W
Hot Spot - Spot Fire	38° 54.528' N	112° 10.538' W
Hot Spot - Spot Fire	38° 55.289' N	112° 13.023' W
Hot Spot - Spot Fire	38° 54.827' N	112° 12.136' W
Mobile Weather Unit	38° 56.254' N	112° 11.351' W
Mobile Weather Unit	38° 58.335' N	112° 13.336' W
Mobile Weather Unit	38° 54.325' W	112° 14.325' W
Mobile Weather Unit	38° 56.207' N	112° 16.071' W
Repeater	38° 51.892' N	112° 13.905' W
Repeater	39° 02.129' N	112° 30.647' W
Safety Zone	38° 52.373' N	112° 16.127' W
Safety Zone	38° 55.686' N	112° 16.394' W
Safety Zone	38° 55.652' N	112° 16.596' W
Sling Site	38° 57.510' N	112° 17.958' W
Sling Site	38° 53.565' N	112° 17.468' W
Unimproved Landing Area	38° 56.485' N	112° 11.355' W
Unimproved Landing Area	38° 56.792' N	112° 11.482' W
Water Development or Draft Site	38° 53.078' N	112° 23.243' W
Water Source	38° 57.460' N	112° 18.411' W
Water Source	38° 51.941' N	112° 13.242' W



GIS TEAM 4 GIS
7/19/2022 2:11:12
ACRES FROM IIR AND GPS
NORTH AMERICAN 1983 DATUM, LATLONG
GRID