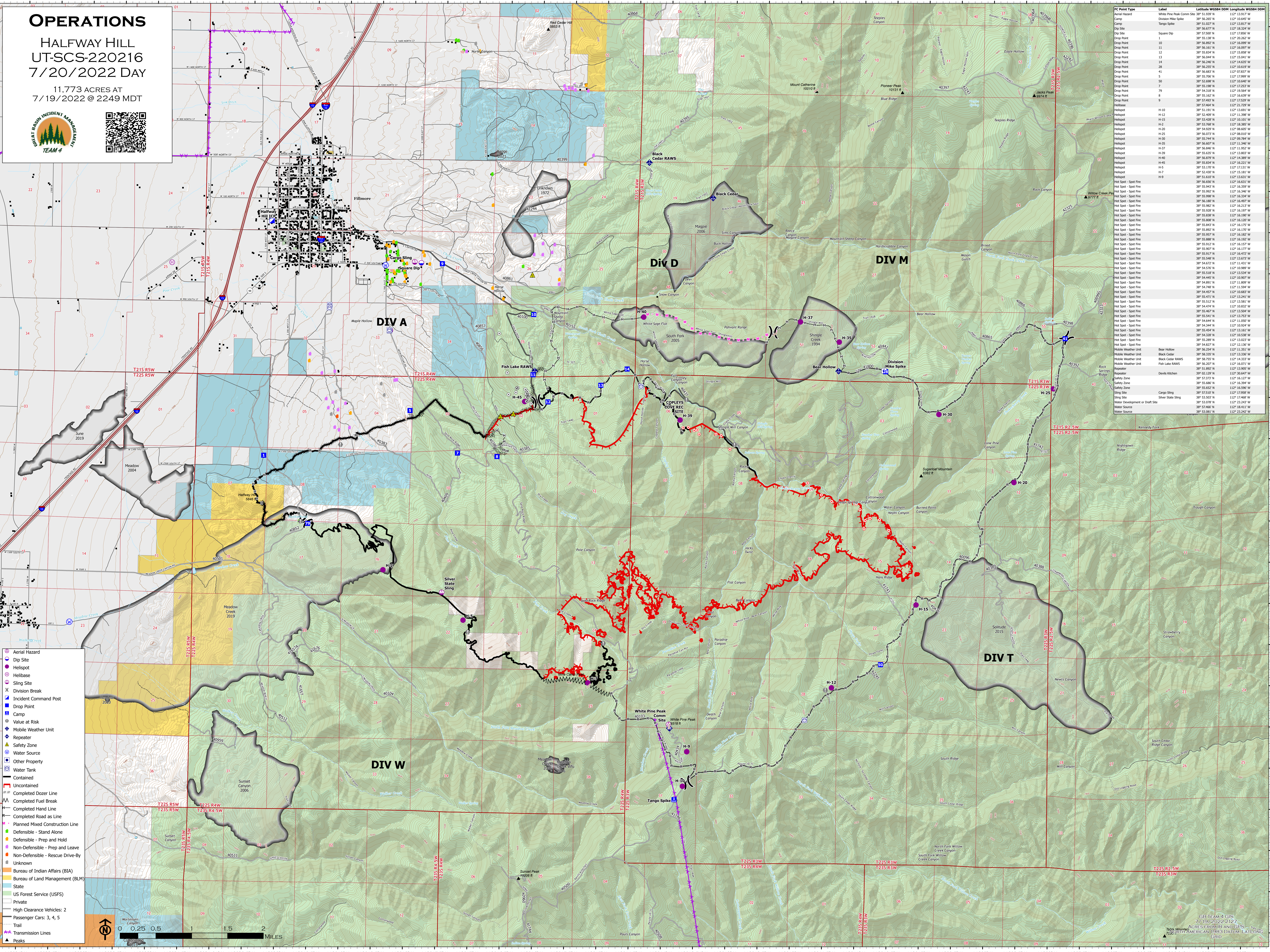


OPERATIONS

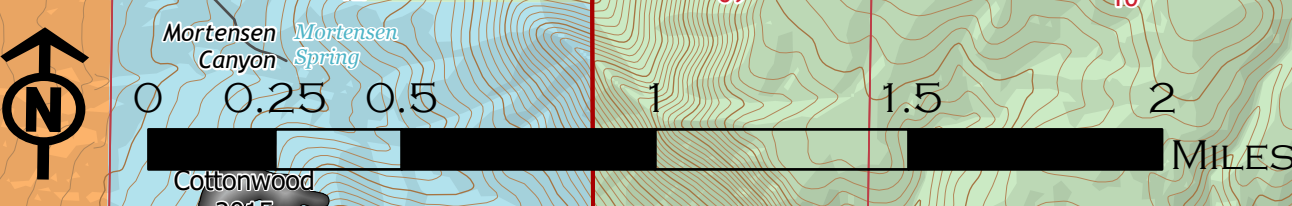
HALFWAY HILL UT-SCS-220216 7/20/2022 DAY

11,773 ACRES AT
7/19/2022 @ 2249 MDT



PC Point Type	Label	Latitude WSS84	Longitude WSS84
White Pine Peak	5853 #	38° 51.237' N	112° 13.017' W
Camp	Division Mike Spike	38° 56.265' N	112° 10.645' W
Dip Site	Tango Spike	38° 51.027' N	112° 13.817' W
Dip Site	Square Dip	38° 57.500' N	112° 17.856' W
Drop Point	1	38° 55.139' N	112° 20.827' W
Drop Point	10	38° 56.892' N	112° 16.999' W
Drop Point	11	38° 56.161' N	112° 16.997' W
Drop Point	12	38° 55.897' N	112° 16.824' W
Drop Point	13	38° 56.044' N	112° 15.941' W
Drop Point	14	38° 56.249' N	112° 14.633' W
Drop Point	28	38° 55.897' N	112° 16.824' W
Drop Point	41	38° 56.683' N	112° 07.837' W
Drop Point	5	38° 55.706' N	112° 17.999' W
Drop Point	50	38° 55.897' N	112° 16.824' W
Drop Point	7	38° 55.198' N	112° 17.253' W
Drop Point	29	38° 54.318' N	112° 19.564' W
Drop Point	8	38° 55.897' N	112° 16.824' W
Drop Point	9	38° 57.493' N	112° 17.529' W
Helibase	H-10	38° 57.664' N	112° 21.759' W
Helibase	H-12	38° 52.409' N	112° 11.398' W
Helibase	H-15	38° 53.428' N	112° 10.101' W
Helibase	H-2	38° 56.827' N	112° 16.824' W
Helibase	H-20	38° 54.929' N	112° 08.605' W
Helibase	H-25	38° 56.072' N	112° 08.612' W
Helibase	H-30	38° 55.244' N	112° 11.340' W
Helibase	H-35	38° 56.607' N	112° 11.340' W
Helibase	H-37	38° 56.949' N	112° 11.952' W
Helibase	H-39	38° 55.897' N	112° 16.824' W
Helibase	H-40	38° 56.879' N	112° 14.389' W
Helibase	H-45	38° 55.834' N	112° 16.221' W
Helibase	H-5	38° 53.197' N	112° 11.311' W
Helibase	H-7	38° 52.439' N	112° 15.181' W
Helibase	H-9	38° 51.607' N	112° 13.631' W
Hot Spot - Spot Fire	H-10	38° 56.969' N	112° 16.824' W
Hot Spot - Spot Fire	H-12	38° 55.947' N	112° 16.159' W
Hot Spot - Spot Fire	H-15	38° 55.897' N	112° 16.824' W
Hot Spot - Spot Fire	H-2	38° 55.998' N	112° 16.334' W
Hot Spot - Spot Fire	H-20	38° 56.187' N	112° 16.937' W
Hot Spot - Spot Fire	H-25	38° 55.897' N	112° 16.824' W
Hot Spot - Spot Fire	H-30	38° 55.897' N	112° 16.824' W
Hot Spot - Spot Fire	H-35	38° 55.897' N	112° 16.824' W
Hot Spot - Spot Fire	H-37	38° 55.897' N	112° 16.824' W
Hot Spot - Spot Fire	H-39	38° 55.897' N	112° 16.824' W
Hot Spot - Spot Fire	H-40	38° 55.897' N	112° 16.824' W
Hot Spot - Spot Fire	H-45	38° 55.897' N	112° 16.824' W
Hot Spot - Spot Fire	H-5	38° 55.897' N	112° 16.824' W
Hot Spot - Spot Fire	H-7	38° 55.897' N	112° 16.824' W
Hot Spot - Spot Fire	H-9	38° 55.897' N	112° 16.824' W
Mobile Weather Unit	Bear Hollow	38° 55.912' N	112° 13.230' W
Mobile Weather Unit	Black Cedar	38° 58.335' N	112° 13.330' W
Mobile Weather Unit	Black Cedar RAWS	38° 58.759' N	112° 14.337' W
Mobile Weather Unit	Fish Lake RAWS	38° 56.207' N	112° 16.277' W
Repeater	Repeater	38° 51.892' N	112° 13.909' W
Safety Zone	Safety Zone	38° 52.297' N	112° 20.497' W
Safety Zone	Safety Zone	38° 57.375' N	112° 16.127' W
Sling Site	Sling Site	38° 55.689' N	112° 16.394' W
Sling Site	Sling Site	38° 55.652' N	112° 16.598' W
Sling Site	Sling Site	38° 57.510' N	112° 17.958' W
Water Source	Water Source	38° 53.593' N	112° 17.468' W
Water Source	Water Source	38° 53.078' N	112° 23.247' W
Water Source	Water Source	38° 57.466' N	112° 18.411' W
Water Source	Water Source	38° 53.081' N	112° 23.242' W

- Aerial Hazard
- Dip Site
- Helispot
- Helibase
- Sling Site
- Division Break
- Incident Command Post
- Drop Point
- Camp
- Value at Risk
- Mobile Weather Unit
- Repeater
- Safety Zone
- Water Source
- Other Property
- Water Tank
- Contained
- Uncontained
- Completed Dozer Line
- Completed Fuel Break
- Completed Hand Line
- Completed Road as Line
- Planned Mixed Construction Line
- Defensible - Stand Alone
- Defensible - Prep and Hold
- Non-Defensible - Prep and Leave
- Non-Defensible - Rescue Drive-By
- Unknown
- Bureau of Indian Affairs (BIA)
- Bureau of Land Management (BLM)
- State
- US Forest Service (USFS)
- Private
- High Clearance Vehicles: 2
- Passenger Cars: 3, 4, 5
- Trail
- Transmission Lines
- Peaks



UTM GRID
GCS: NAD83
Datum: NAD83
Units: Meter
Zone: 12N
Spheroid: GRS80
Datum Shift: 0
Units: Meter
Zone: 12N
Spheroid: GRS80
Datum Shift: 0