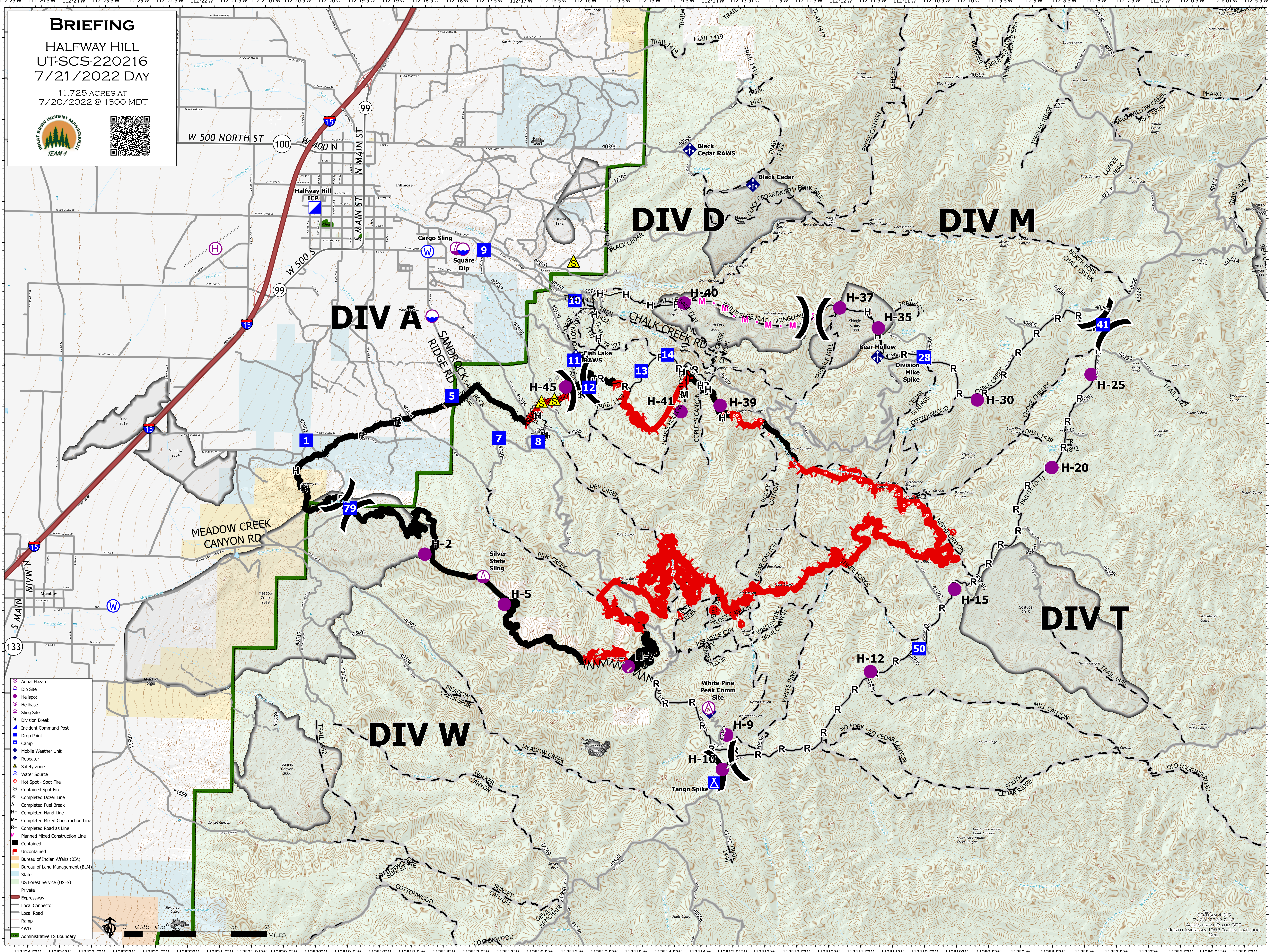


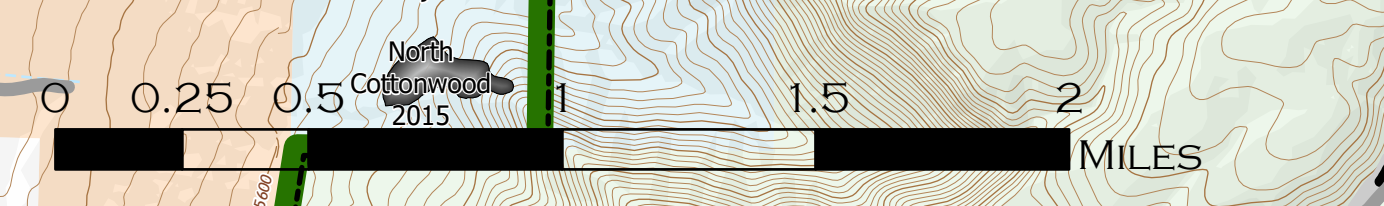
# BRIEFING

HALFWAY HILL  
UT-SCS-220216  
7/21/2022 DAY

11,725 ACRES AT  
7/20/2022 @ 1300 MDT



- Aerial Hazard
- Dip Site
- Helispot
- Helibase
- Sling Site
- Division Break
- Incident Command Post
- Drop Point
- Camp
- Mobile Weather Unit
- Repeater
- Safety Zone
- Water Source
- Hot Spot - Spot Fire
- Contained Spot Fire
- Completed Dozer Line
- Completed Fuel Break
- Completed Hand Line
- Completed Mixed Construction Line
- Completed Road as Line
- Planned Mixed Construction Line
- Contained
- Uncontained
- Bureau of Indian Affairs (BIA)
- Bureau of Land Management (BLM)
- State
- US Forest Service (USFS)
- Private
- Expressway
- Local Connector
- Local Road
- Ramp
- 4WD
- Administrative PS Boundary



Scale  
GEMTEAM 4 GIS  
7/20/2022 2118  
ACRES FROM IIR AND GPS  
NORTH AMERICAN 1983 DATUM, LAT/LONG  
GRID