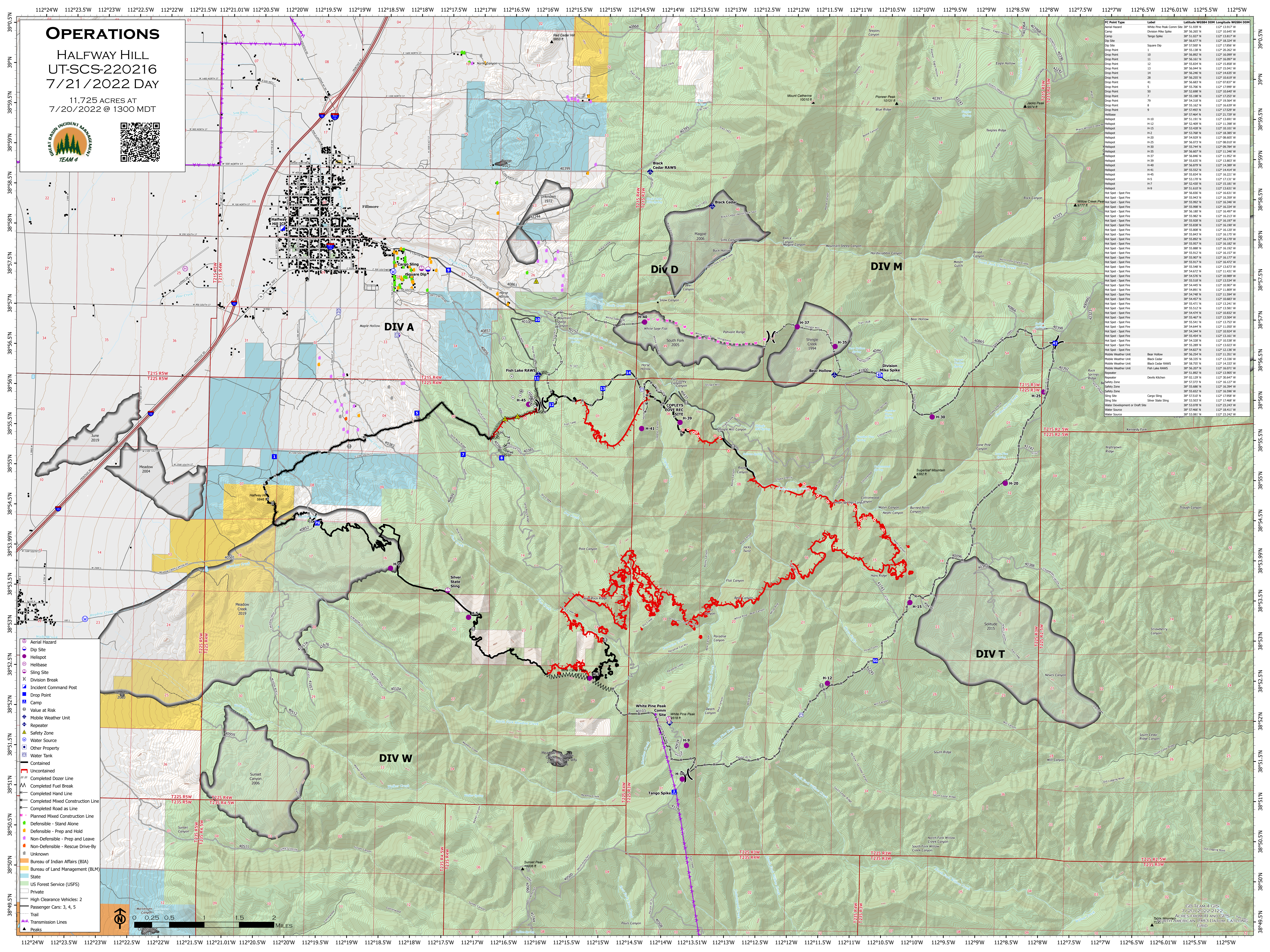


OPERATIONS

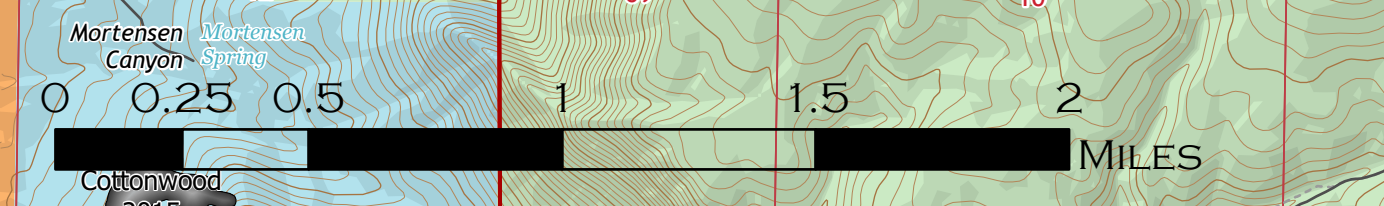
HALFWAY HILL UT-SCS-220216 7/21/2022 DAY

11,725 ACRES AT
7/20/2022 @ 1300 MDT



PC Point Type	Label	Latitude WGS84	Longitude WGS84
Well Head	White Pine Peak Comm Site	38° 51.370' N	112° 13.117' W
Camp	Division Mike Spike	38° 56.265' N	112° 10.645' W
Camp	Tango Spike	38° 57.007' N	112° 10.817' W
Dip Site	Square Dip	38° 57.500' N	112° 17.850' W
Drop Point	1	38° 55.130' N	112° 20.342' W
Drop Point	10	38° 56.892' N	112° 16.999' W
Drop Point	11	38° 56.161' N	112° 16.997' W
Drop Point	12	38° 55.884' N	112° 16.997' W
Drop Point	13	38° 56.044' N	112° 15.941' W
Drop Point	14	38° 56.240' N	112° 14.833' W
Drop Point	28	38° 55.205' N	112° 20.252' W
Drop Point	41	38° 56.683' N	112° 07.837' W
Drop Point	5	38° 55.700' N	112° 17.999' W
Drop Point	50	38° 55.898' N	112° 17.253' W
Drop Point	7	38° 54.318' N	112° 18.554' W
Drop Point	9	38° 54.318' N	112° 18.554' W
Drop Point	8	38° 57.493' N	112° 17.529' W
Drop Point	39	38° 55.892' N	112° 16.310' W
Drop Point	38	38° 55.892' N	112° 16.310' W
Drop Point	37	38° 55.892' N	112° 16.310' W
Drop Point	36	38° 55.892' N	112° 16.310' W
Drop Point	35	38° 55.892' N	112° 16.310' W
Drop Point	34	38° 55.892' N	112° 16.310' W
Drop Point	33	38° 55.892' N	112° 16.310' W
Drop Point	32	38° 55.892' N	112° 16.310' W
Drop Point	31	38° 55.892' N	112° 16.310' W
Drop Point	30	38° 55.892' N	112° 16.310' W
Drop Point	29	38° 55.892' N	112° 16.310' W
Drop Point	28	38° 55.892' N	112° 16.310' W
Drop Point	27	38° 55.892' N	112° 16.310' W
Drop Point	26	38° 55.892' N	112° 16.310' W
Drop Point	25	38° 55.892' N	112° 16.310' W
Drop Point	24	38° 55.892' N	112° 16.310' W
Drop Point	23	38° 55.892' N	112° 16.310' W
Drop Point	22	38° 55.892' N	112° 16.310' W
Drop Point	21	38° 55.892' N	112° 16.310' W
Drop Point	20	38° 55.892' N	112° 16.310' W
Drop Point	19	38° 55.892' N	112° 16.310' W
Drop Point	18	38° 55.892' N	112° 16.310' W
Drop Point	17	38° 55.892' N	112° 16.310' W
Drop Point	16	38° 55.892' N	112° 16.310' W
Drop Point	15	38° 55.892' N	112° 16.310' W
Drop Point	14	38° 55.892' N	112° 16.310' W
Drop Point	13	38° 55.892' N	112° 16.310' W
Drop Point	12	38° 55.892' N	112° 16.310' W
Drop Point	11	38° 55.892' N	112° 16.310' W
Drop Point	10	38° 55.892' N	112° 16.310' W
Drop Point	9	38° 55.892' N	112° 16.310' W
Drop Point	8	38° 55.892' N	112° 16.310' W
Drop Point	7	38° 55.892' N	112° 16.310' W
Drop Point	6	38° 55.892' N	112° 16.310' W
Drop Point	5	38° 55.892' N	112° 16.310' W
Drop Point	4	38° 55.892' N	112° 16.310' W
Drop Point	3	38° 55.892' N	112° 16.310' W
Drop Point	2	38° 55.892' N	112° 16.310' W
Drop Point	1	38° 55.892' N	112° 16.310' W
Drop Point	0	38° 55.892' N	112° 16.310' W

- Aerial Hazard
- Dip Site
- Helispot
- Helibase
- Sling Site
- Division Break
- Incident Command Post
- Drop Point
- Camp
- Value at Risk
- Mobile Weather Unit
- Repeater
- Safety Zone
- Water Source
- Other Property
- Water Tank
- Contained
- Uncontained
- Completed Dozer Line
- Completed Fuel Break
- Completed Hand Line
- Completed Mixed Construction Line
- Completed Road as Line
- Planned Mixed Construction Line
- Defensible - Stand Alone
- Defensible - Prep and Hold
- Non-Defensible - Prep and Leave
- Non-Defensible - Rescue Drive-By
- Unknown
- Bureau of Indian Affairs (BIA)
- Bureau of Land Management (BLM)
- State
- US Forest Service (USFS)
- Private
- High Clearance Vehicles: 2
- Passenger Cars: 3, 4, 5
- Trail
- Transmission Lines
- Peaks



UT-SCS-220216
7/21/2022 DAY
11,725 ACRES AT
7/20/2022 @ 1300 MDT
GREAT BASIN INCIDENT MANAGEMENT TEAM 4
UT-SCS-220216