

112°17'W

112°16'W

112°15'W

112°14'W

112°13'W

112°12'W

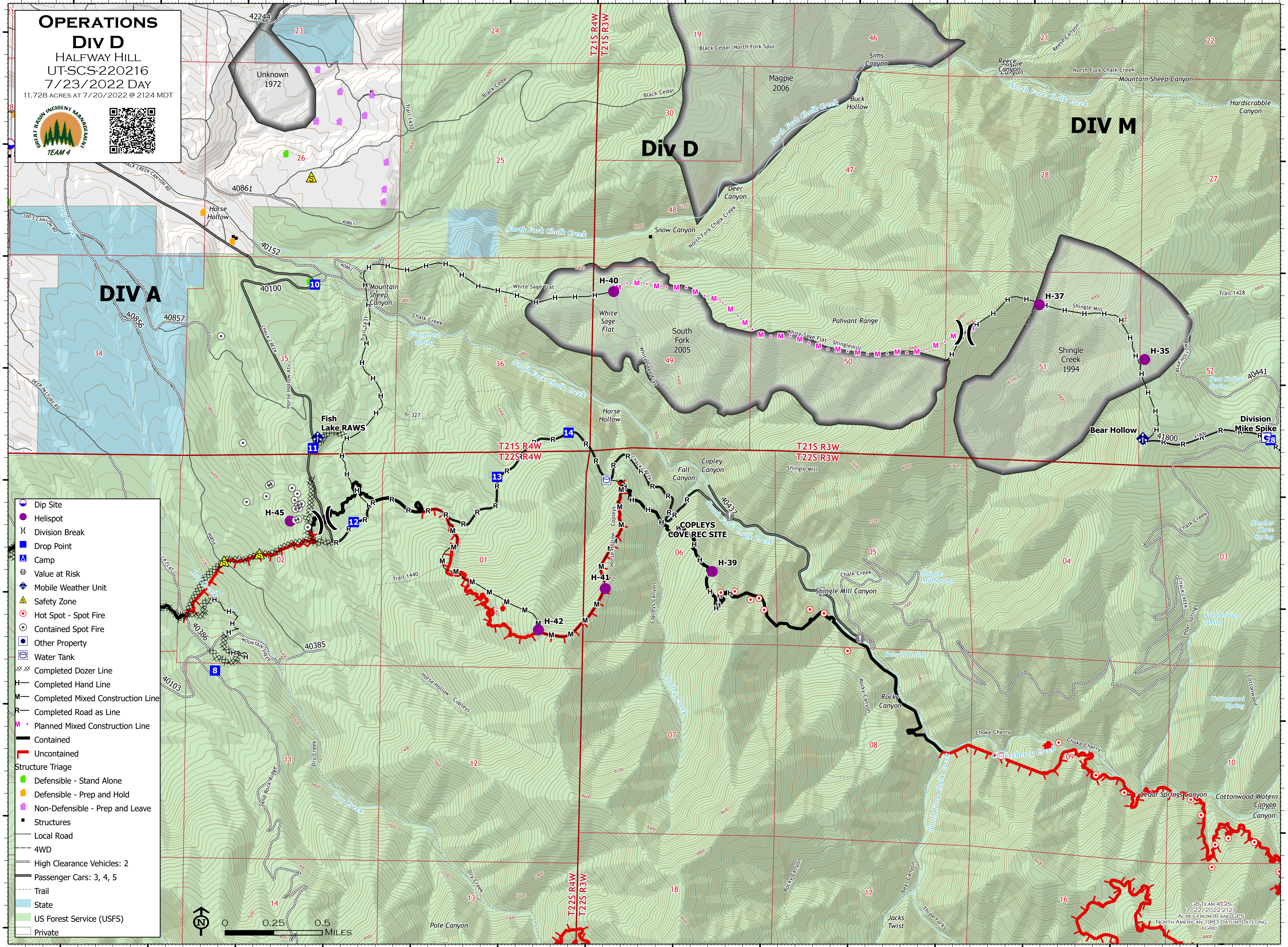
112°11'W

38°58'N  
38°57'N  
38°56'N  
38°55'N  
38°54'N  
38°53.99'N

38°58'N  
38°57'N  
38°56'N  
38°55'N  
38°54'N  
38°53.99'N

**OPERATIONS**  
**Div D**  
 HALFWAY HILL  
 UT-SCS-220216  
 7/23/2022 DAY  
 11,728 ACRES AT 7/20/2022 @ 2124 MDT





- Dip Site
- Helispot
- Division Break
- Drop Point
- Camp
- Value at Risk
- Mobile Weather Unit
- Safety Zone
- Hot Spot - Spot Fire
- Contained Spot Fire
- Other Property
- Water Tank
- Completed Dozer Line
- Completed Hand Line
- Completed Mixed Construction Line
- Planned Mixed Construction Line
- Contained
- Uncontained
- Structure Triage**
- Defensible - Stand Alone
- Defensible - Prep and Hold
- Non-Defensible - Prep and Leave
- Structures
- Local Road
- 4WD
- High Clearance Vehicles: 2
- Passenger Cars: 3, 4, 5
- Trail
- State
- US Forest Service (USFS)
- Private



GB TEAM 41G1S  
 7/22/2022 2127  
 ACRES FROM IR AND GPS  
 NORTH AMERICAN 1983 DATUM, LAT/LONG  
 8 GRID  
 8800

112°17'W

112°16'W

112°15'W

112°14'W

112°13'W

112°12'W

112°11'W