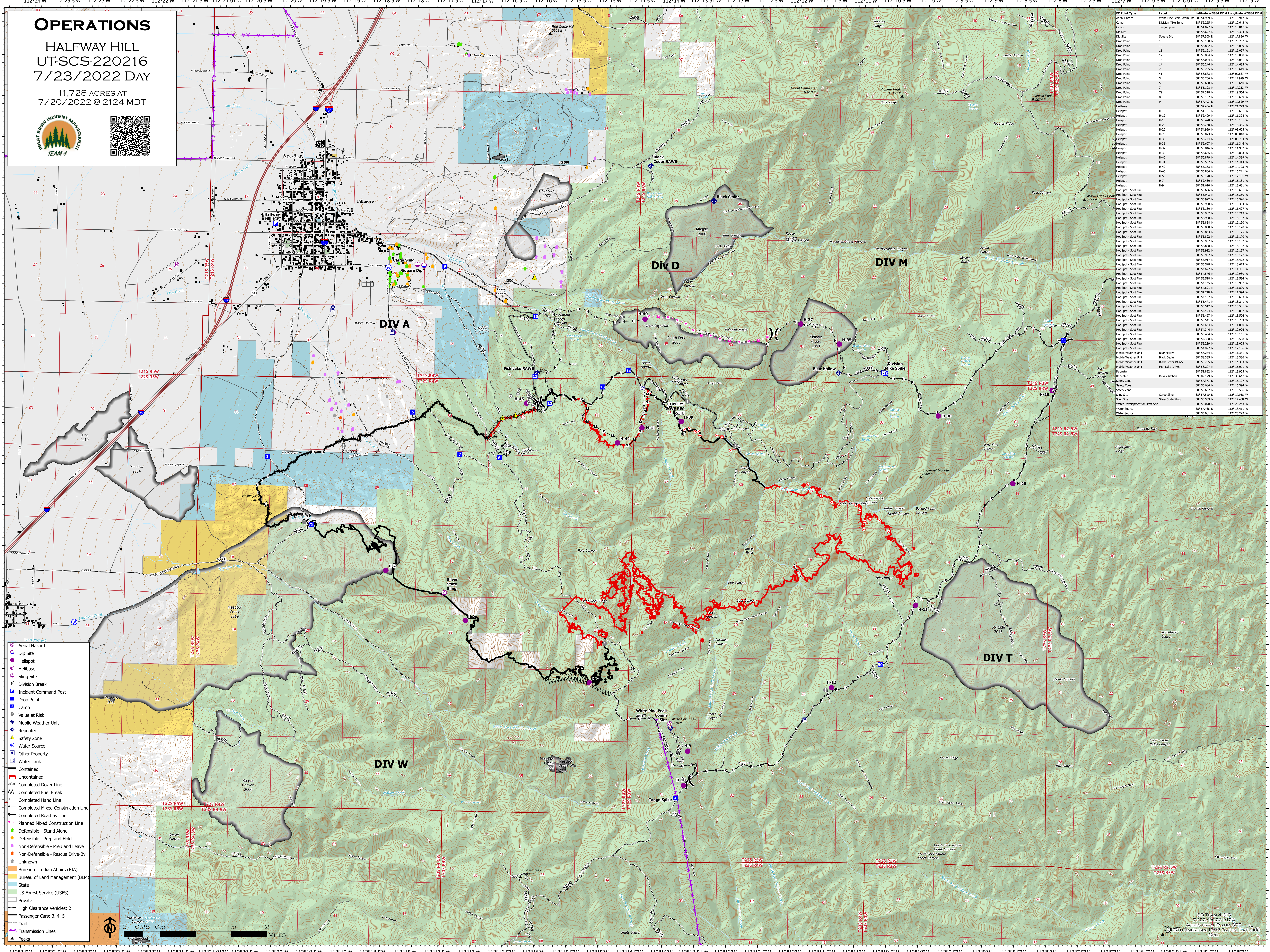


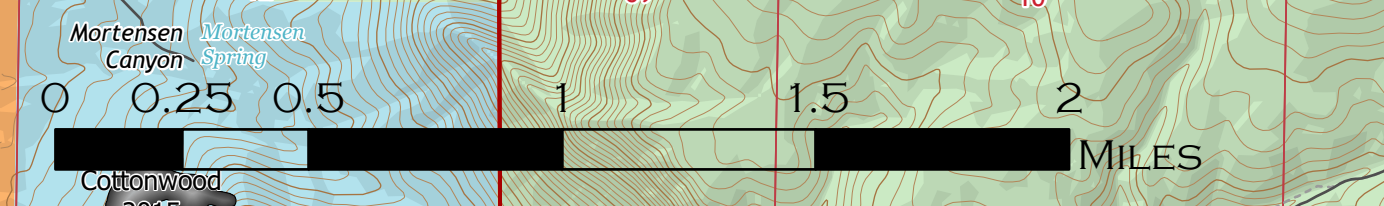
OPERATIONS

HALFWAY HILL UT-SCS-220216 7/23/2022 DAY

11,728 ACRES AT
7/20/2022 @ 2124 MDT



- Aerial Hazard
- Dip Site
- Helibase
- Sling Site
- Division Break
- Incident Command Post
- Drop Point
- Camp
- Value at Risk
- Mobile Weather Unit
- Repeater
- Safety Zone
- Water Source
- Other Property
- Water Tank
- Contained
- Uncontained
- Completed Dozer Line
- Completed Fuel Break
- Completed Hand Line
- Completed Mixed Construction Line
- Completed Road as Line
- Planned Mixed Construction Line
- Defensible - Stand Alone
- Defensible - Prep and Hold
- Non-Defensible - Prep and Leave
- Non-Defensible - Rescue Drive-By
- Unknown
- Bureau of Indian Affairs (BIA)
- Bureau of Land Management (BLM)
- State
- US Forest Service (USFS)
- Private
- High Clearance Vehicles: 2
- Passenger Cars: 3, 4, 5
- Trail
- Transmission Lines
- Peaks



PC Point Type	Label	Latitude WGS84	Longitude WGS84
Control Point	White Pine Peak Corn Site	38° 53.939' N	112° 13.977' W
Camp	Division Mike Spike	38° 56.265' N	112° 15.649' W
Camp	Tango Spike	38° 56.027' N	112° 13.817' W
Drop Site	Square Dip	38° 57.500' N	112° 17.856' W
Drop Point	1	38° 56.827' N	112° 20.827' W
Drop Point	10	38° 56.892' N	112° 16.099' W
Drop Point	11	38° 56.161' N	112° 16.997' W
Drop Point	12	38° 56.325' N	112° 16.947' W
Drop Point	13	38° 56.044' N	112° 15.041' W
Drop Point	14	38° 56.246' N	112° 14.833' W
Drop Point	28	38° 55.196' N	112° 18.547' W
Drop Point	41	38° 56.683' N	112° 07.817' W
Drop Point	5	38° 55.706' N	112° 17.999' W
Drop Point	9	38° 55.198' N	112° 17.253' W
Drop Point	7	38° 55.198' N	112° 17.253' W
Drop Point	8	38° 55.182' N	112° 16.639' W
Drop Point	9	38° 57.489' N	112° 17.528' W
Helibase	Helibase	38° 55.466' N	112° 21.729' W
Helipot	H-10	38° 51.191' N	112° 13.691' W
Helipot	H-12	38° 53.409' N	112° 11.988' W
Helipot	H-15	38° 53.768' N	112° 18.385' W
Helipot	H-2	38° 53.768' N	112° 18.385' W
Helipot	H-20	38° 54.929' N	112° 08.650' W
Helipot	H-25	38° 55.072' N	112° 08.017' W
Helipot	H-30	38° 55.244' N	112° 09.784' W
Helipot	H-35	38° 56.007' N	112° 11.940' W
Helipot	H-37	38° 55.986' N	112° 11.852' W
Helipot	H-39	38° 55.639' N	112° 13.803' W
Helipot	H-40	38° 55.679' N	112° 14.808' W
Helipot	H-41	38° 55.552' N	112° 14.414' W
Helipot	H-42	38° 55.363' N	112° 14.793' W
Helipot	H-45	38° 55.318' N	112° 16.211' W
Helipot	H-5	38° 53.170' N	112° 12.131' W
Helipot	H-7	38° 55.430' N	112° 15.181' W
Helipot	H-9	38° 54.657' N	112° 16.631' W
Hot Spot - Spool Fire	Hot Spot - Spool Fire	38° 55.947' N	112° 16.559' W
Hot Spot - Spool Fire	Hot Spot - Spool Fire	38° 55.902' N	112° 16.534' W
Hot Spot - Spool Fire	Hot Spot - Spool Fire	38° 55.998' N	112° 16.534' W
Hot Spot - Spool Fire	Hot Spot - Spool Fire	38° 55.897' N	112° 16.897' W
Hot Spot - Spool Fire	Hot Spot - Spool Fire	38° 55.982' N	112° 16.213' W
Hot Spot - Spool Fire	Hot Spot - Spool Fire	38° 55.928' N	112° 16.197' W
Hot Spot - Spool Fire	Hot Spot - Spool Fire	38° 55.828' N	112° 16.107' W
Hot Spot - Spool Fire	Hot Spot - Spool Fire	38° 55.808' N	112° 16.120' W
Hot Spot - Spool Fire	Hot Spot - Spool Fire	38° 55.843' N	112° 16.173' W
Hot Spot - Spool Fire	Hot Spot - Spool Fire	38° 55.892' N	112° 16.120' W
Hot Spot - Spool Fire	Hot Spot - Spool Fire	38° 55.957' N	112° 16.182' W
Hot Spot - Spool Fire	Hot Spot - Spool Fire	38° 55.888' N	112° 16.152' W
Hot Spot - Spool Fire	Hot Spot - Spool Fire	38° 55.912' N	112° 16.137' W
Hot Spot - Spool Fire	Hot Spot - Spool Fire	38° 55.907' N	112° 16.177' W
Hot Spot - Spool Fire	Hot Spot - Spool Fire	38° 55.917' N	112° 16.172' W
Hot Spot - Spool Fire	Hot Spot - Spool Fire	38° 55.948' N	112° 13.977' W
Hot Spot - Spool Fire	Hot Spot - Spool Fire	38° 54.672' N	112° 11.431' W
Hot Spot - Spool Fire	Hot Spot - Spool Fire	38° 54.576' N	112° 11.897' W
Hot Spot - Spool Fire	Hot Spot - Spool Fire	38° 55.518' N	112° 13.534' W
Hot Spot - Spool Fire	Hot Spot - Spool Fire	38° 54.445' N	112° 10.907' W
Hot Spot - Spool Fire	Hot Spot - Spool Fire	38° 54.891' N	112° 11.809' W
Hot Spot - Spool Fire	Hot Spot - Spool Fire	38° 54.748' N	112° 11.994' W
Hot Spot - Spool Fire	Hot Spot - Spool Fire	38° 54.457' N	112° 10.683' W
Hot Spot - Spool Fire	Hot Spot - Spool Fire	38° 54.471' N	112° 13.941' W
Hot Spot - Spool Fire	Hot Spot - Spool Fire	38° 55.512' N	112° 13.981' W
Hot Spot - Spool Fire	Hot Spot - Spool Fire	38° 54.474' N	112° 10.832' W
Hot Spot - Spool Fire	Hot Spot - Spool Fire	38° 55.467' N	112° 13.941' W
Hot Spot - Spool Fire	Hot Spot - Spool Fire	38° 55.541' N	112° 13.733' W
Hot Spot - Spool Fire	Hot Spot - Spool Fire	38° 54.444' N	112° 11.920' W
Hot Spot - Spool Fire	Hot Spot - Spool Fire	38° 54.344' N	112° 10.824' W
Hot Spot - Spool Fire	Hot Spot - Spool Fire	38° 55.454' N	112° 13.161' W
Hot Spot - Spool Fire	Hot Spot - Spool Fire	38° 54.328' N	112° 10.581' W
Hot Spot - Spool Fire	Hot Spot - Spool Fire	38° 55.289' N	112° 13.023' W
Hot Spot - Spool Fire	Hot Spot - Spool Fire	38° 54.827' N	112° 12.130' W
Mobile Weather Unit	Mobile Weather Unit	38° 55.254' N	112° 11.511' W
Mobile Weather Unit	Mobile Weather Unit	38° 58.135' N	112° 13.136' W
Mobile Weather Unit	Black Cedar RAW	38° 56.795' N	112° 14.333' W
Mobile Weather Unit	Fish Lake RAW	38° 56.207' N	112° 14.621' W
Repeater	Repeater	38° 51.892' N	112° 13.905' W
Safety Zone	Devils Kitchen	38° 02.129' N	112° 30.647' W
Safety Zone	Safety Zone	38° 53.972' N	112° 16.127' W
Safety Zone	Safety Zone	38° 55.686' N	112° 16.194' W
Sling Site	Sling Site	38° 53.852' N	112° 16.996' W
Sling Site	Sling Site	38° 53.917' N	112° 17.956' W
Sling Site	Sling Site	38° 53.503' N	112° 17.468' W
Water Source	Water Source	38° 53.078' N	112° 23.843' W
Water Source	Water Source	38° 57.466' N	112° 18.411' W
Water Source	Water Source	38° 53.081' N	112° 23.242' W