

Halfway Hill



Team 4 will constantly evaluate the inherent risks in the wildland environment to guide land managers and fire professionals during incident management through open dialogue, professionalism, and team spirit.

Core Values: Respect, Integrity, Friendliness, Pride, Flexibility/Adaptability, Professionalism, Training/Mentoring, Family, Commitment

SATURDAY JULY 23, 2022

DAY: 0600-2000

PNPT4U (1522)

UT-SCS-220216



<https://linktr.ee/greatbasinteam4>



IAP/MAPS/CHECK-IN

GPS: NAD 83 or WGS 84

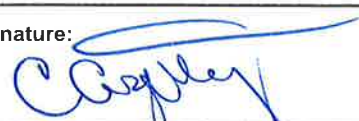
Format: DDMM.MM

Map product in NAD 83

INCIDENT OBJECTIVES (ICS 202)

1. Incident Name:	2. Operational Period: DAY	
HALFWAY HILL	Date/Time From: 07/23/2022 0600 SAT	Date/Time To: 07/23/2022 2000 SAT
3. Objective(s):		
Prevent fire spread to private property and minimize impacts to power, telecommunications, culinary water, irrigation, and recreational infrastructure.		
Employ and implement high probability of success strategies and tactics that are commensurate with the inherent risks in the wildland fire environment.		
Coordinate with resource advisor(s) to minimize negative impacts from fire suppression actions while documenting and planning for future suppression rehabilitation.		
Continuously implement and update near and long-term strategic plans with intent to keep final perimeter as small as possible.		
Provide fire information thru public interactions, web platforms, and social media products to public, stakeholders, and agencies to maintain and enhance community relationships throughout the duration of the incident.		
Continually implement and enforce COVID-19 mitigation strategies to lessen the probability of spread through fire personnel and the public.		
4. Operational Period Command Emphasis:		
Transition days can be confusing; make sure you and your crew know the new structure.		
General Situational Awareness:		
Maintain balanced momentum regardless of task intensity or composition.		
5. Site Safety Plan Required? Yes <input type="checkbox"/> No <input checked="" type="checkbox"/>		
Approved Site Safety Plan(s) Located		
6. Incident Action Plan (the items checked below are included in this Incident Action Plan):		
<input checked="" type="checkbox"/> ICS 202	<input type="checkbox"/> ICS 207	Other Attachments:
<input checked="" type="checkbox"/> ICS 203	<input checked="" type="checkbox"/> ICS 208	<input type="checkbox"/> _____
<input checked="" type="checkbox"/> ICS 204	<input checked="" type="checkbox"/> ICS 220	<input type="checkbox"/> _____
<input checked="" type="checkbox"/> ICS 205	<input type="checkbox"/> Map/Chart	<input type="checkbox"/> _____
<input type="checkbox"/> ICS 205A	<input checked="" type="checkbox"/> Weather Forecast/Tides/Currents	<input type="checkbox"/> _____
<input checked="" type="checkbox"/> ICS 206		
7. Prepared by: TONY PISCOPO	Position/Title: PSC2	Signature: 
8. Approved by Incident Commander:	Name: STEVE SHAW	Signature: 
ICS 202	IAP Page	Date/Time: 07/22/2022 2100

ORGANIZATION ASSIGNMENT LIST (ICS 203)

1. Incident Name:		2. Operational Period: DAY	
HALFWAY HILL		Date/Time From: 07/23/2022 0600	Date/Time To: 07/23/2022 2000
		SAT	SAT
3. Incident Commander(s) and Command Staff:		COMMUNICATIONS UNIT	SWENSON, REGGIE
IC/UC	SHAW, STEVE	MEDICAL UNIT	WOOLSEY, DUANE; SLATORE, JON ALLEN, SEAN (T)
SAFETY OFFICER	HOUSTON, SKEET CONNELLY, TRACY (T)	SECURITY UNIT	DAVIS, MCCALL
SAFETY OFFICER	BURBRIDGE, BRIAN LATHEN, WES	FOOD UNIT	BATE, ALLAN
INFORMATION OFFICER	BENDER, JESSE KNUDSON, GINA (T)	7. Operations Section:	
LIAISON OFFICER	ALEXANDER, ELDEN PAY, NICHOLAS (T)	FIELD OPS	COATES, CLINT STEPHENS, CLAY (T)
		PLANNING OPS	BRUINGTON, KRIS
		OPS SECTION CHIEF	SIEMERS, NATE
4. Agency/Organization Representative(s):			
Agency/Organization	Name	DIVISION/GROUP	A/W
USFS	MONROE, BRIAN		WILLIAMS, JAKE HELSTERN, BROCK (T)
USFS	JARED WHITMER (T)	DIVISION/GROUP	D
UT-DNR	TORGERSON, JASON		STEWART, CHANCE MORAN, BRIAN (T)
BLM	GATES, MICHAEL	DIVISION/GROUP	M
USFS - READ	KELLY, SEAN		MECHAM, BODE TEEPLES, JARAD (T)
		DIVISION/GROUP	T
			GLOVER, ZACH HANSEN, RACHAEL (T)
5. Planning Section:			
CHIEF	PISCOPO, TONY		
RESOURCES UNIT	AUSGOTHARP, CHERIE		
SITUATION UNIT	BROWN, CHRISTINE		
DEMOBILIZATION UNIT	LITTLE, HEIDI		
TRAINING SPECIALIST	WARE, JOANNE (T)	7b. Air Operations Branch:	
DOCUMENTATION UNIT	KOSIOROWSKI, JOEY NIEVES, ELVIRA	AIR OPS BRANCH DIRECTOR	GREENHALGH, KEVIN RADDATZ, RAY (T)
FIRE BEHAVIOR ANALYST	FILBERT, MATT JEROS, NICK (T)	AIR ATTACK SUPERVISOR	MELTON, MIKE HODGES, GENE
GIS SPECIALIST	MCCOLLISTER, CHRIS	AIR SUPPORT SUPERVISOR	FREY, DAVE RUSSELL, JAMES (T)
GIS SPECIALIST	DICKINSON, MATT RANGEL, GISELLE (T)	HELICOPTER COORDINATOR	
TECHNOLOGY SUPPORT SPECIALIST	JENSEN, DUSTIN; JAQUEZ, HERACLIO	AIR TANKER COORDINATOR	
INCIDENT METEOROLOGIST	SEAMAN, MIKE		
6. Logistics Section:		8. Finance/Administration Section:	
CHIEF	BROWN, TYLER	CHIEF	MAJEWSKI, JOE
SUPPLY UNIT	GARAHANA, LARRY	TIME UNIT	OLSEN, RANDEE DINKEL, MICAYLA (T)
ORDERING MANAGER	COATES, NAN	PROCUREMENT UNIT	MIKULA, BRENDA
RECEIVING/DISTRIBUTION MANAGER	STEWART, SEAN	COMPENSATION UNIT	BENNETT, JULIE (T)
FACILITIES UNIT	KLING, JASON	COST UNIT	RAJALA, ERIN
GROUND SUPPORT UNIT	PETERSON, JUSTIN		
9. Prepared By:	Name: CHERIE AUSGOTHARP	Position/Title: RESL	Signature: 
ICS 203	IAP Page	Date/Time: 07/22/2022 2100	



Halfway Hill Fire Weather FORECAST

IMET contact - (816) 589-0168

FORECAST NO: 13
PREDICTION FOR: SATURDAY & SAT Night
SHIFT DATE: July 23, 2022
FORECAST ISSUED: 07/22/2022 at 2000

NAME OF FIRE: Halfway Hill
UNIT: UT-SCS-220216
SIGNED: Mike Seaman
Incident Meteorologist (Mike Seaman)

WEATHER DISCUSSION: Fire weather conditions will remain elevated today, owing to a combination of gusty afternoon winds, a hot and unstable air mass with a Haines of 6, and very low RH. After a night of poor recovery, RH values will fall into the teens by early afternoon, while temperatures reach the low 90s across lower slopes by late morning. Additionally, gusty west-southwest winds will again develop across west facing slopes, exposed ridgelines, and through wind aligned drainages. Isolated showers and thunderstorms with gusty erratic winds to 40 mph will again be possible after 1500. Moisture will increase Sunday through early next week, bringing a significant increase in RH, along with a chance for wetting rains.

TODAY: ** ELEVATED CONDITIONS – HOT, DRY & UNSTABLE WITH GUSTY PM WINDS **

WEATHER: Hot and dry with gusty afternoon winds. Partly cloudy. Isolated showers/t-storms after 1500.

MAX TEMP: **6500 ft:** 97-100° F **8000 ft:** 86-89° F **Trend:** Down 1-2° F
MIN RH: **6500 ft:** 13-16% **8000 ft:** 17-20% **Trend:** Up 1-3%

20 FT WINDS (mph):

Upper Exposed Ridges: West-southwest 8-12 w/gusts 14-18 increasing to 11-15 w/gusts 20-28 after 1200.

Lower Slopes & Canyons: Slope/drainage 3-8 becoming west-southwest 8-12 w/gusts 18-25 after 1300.

MORNING INVERSION: Below 7500 ft early, mixing out by 1000 **HAINES INDEX:** 6 (High)

LAL: 1 until 1500, then 2 **PCPN/STORM CHC:** 5% until 1500, then 15% **CWR:** 5%

TONIGHT: ** GUSTY ERRATIC OUTFLOW WINDS POSSIBLE UNTIL 2200 **

WEATHER: Mostly cloudy. Isolated showers/t-storms until 2200, then scattered showers overnight.

MIN TEMP: **6500 ft:** 67-70° F **8000 ft:** 63-66° F **Trend:** Little Change
MAX RH: **6500 ft:** 34-39% **8500 ft:** 39-44% **Trend:** Up 7-10%

20 FT WINDS (mph):

Upper Exposed Ridges: West 7-11 w/gusts 16-20, decreasing to 6-9 w/gusts 11-16 after 2100.

Lower Slopes & Canyons: West-southwest 6-10 w/gusts 14-18, becoming slope/drainage 4-9 after 2000.

INVERSION: Developing below 7000 feet after 2100. **HAINES INDEX:** 4 (Low)

LAL: 2 until 2200, then 1 **PCPN/STORM CHC:** 15% until 2400, then 30% **CWR:** 10%

OUTLOOK FOR SUN:

WEATHER: Mostly cloudy with scattered showers through the day. Isolated thunderstorms after 1200.

MAX TEMP: 6500 ft: 93-96° F 8000 ft: 81-84° F **MIN RH:** 6500 ft: 17-20% 8000 ft: 23-26%

20 FT EXPOSED WIND (mph): Slope/drainage 3-8 becoming West 6-9 with gusts 14-19 after 1200.

HAINES INDEX: 4 (Low) **LAL:** 2 **PCPN/STORM CHC:** 30% **CWR:** 15%

EXTENDED FORECAST (6500 ft): Trending cooler as moisture increases through Tuesday.

MON: 40% Chance T-storms **Low/High Temp:** 65°/92° **Max/Min RH:** 48/22% **Aftn Wind:** SW 6-9 G 14-18 mph

TUE: 60% Chance T-storms **Low/High Temp:** 63°/88° **Max/Min RH:** 60/29% **Aftn Wind:** W 5-8 G 12-16 mph

WED: 30% Chance T-storms **Low/High Temp:** 62°/91° **Max/Min RH:** 64/22% **Aftn Wind:** W 5-8 G 12-16 mph

YESTERDAY'S WEATHER (FRI): Hot and very dry. Mostly sunny through early afternoon then a few virga showers late.


D1 RAWs (Div A/D Brk) – 6011 ft: **Low/High Temp:** 72/101° **Max/Min RH:** 32/11% **Aftn Wind:** W 9-11 G 15-23 mph **RAIN:** 0.00

IRAWs 31 (DIV D) – 7737 ft: **Low/High Temp:** 72/92° **Max/Min RH:** 30/15% **Aftn Wind:** W 7-10 G 18-23 mph **RAIN:** 0.01

IRAWs 32 (DIV M) – 9139 ft: **Low/High Temp:** 63/89° **Max/Min RH:** 42/18% **Aftn Wind:** W 2-5 G 11-14 mph **RAIN:** 0.00

You can email your line observations to: mike.seaman@noaa.gov ...Thanks!

FIRE BEHAVIOR FORECAST

FORECAST NUMBER: 14	TYPE OF FIRE: Wildfire
FIRE NAME: Halfway Hill	OPERATIONAL PERIOD: 7/23/22 0600-2000
DATE ISSUED: 7/22/22	TIME ISSUED: 2000
UNIT: UT-SCS-220216	SIGNED:  Typed/printed: Matt Filbert FBAN / Nick Jeros FBAN t

INPUTS

WEATHER SUMMARY:

Elevated fire weather conditions will persist today, as gusty winds combine with a hot, dry and unstable air mass this afternoon. Marginal overnight recovery near 30% will allow RH to fall into the teens across the fire by early afternoon. Additionally, gusty west-southwest winds will again develop across west facing slopes, exposed ridgelines, and through wind aligned drainages. Moisture will begin to move back into the area late in the day, bringing isolated showers and thunderstorms after 1500. Gusty and erratic winds to **40 mph** will be possible with these storms.

**** ELEVATED CONDITIONS – HOT, DRY & UNSTABLE WITH GUSTY PM WINDS ****

*****See Attached Weather Forecast*****

OUTPUTS

FIRE BEHAVIOR

GENERAL:

Fuel conditions are responding to the several days of drying by actively burning out in the interior green pockets. Most areas of concern that remain are in Division D where heat is near the edge of the fireline from the burnout operation. Other areas will be somewhat sheltered from wind such as in Nephi Canyon. The wildcard will be a random spot from a tree torch in an exposed area landing in fuels that are aligned with wind and slope.

Fuels and predicted fire behavior:

Grass and grass/shrub fuel types. Expect 25-35 chains/hr. ROS with FL of 5-8 feet.

Oak/pinyon-juniper mix with some timber. Expect 60-100 chains/hr. ROS with FL of 18-21 feet.

Timber litter/shrub understory. Expect ROS in the 12-17 chains/hr. range and FL of 8-12 feet.

Rates of spread and flame lengths are based on worst case scenarios where wind gusts exceed 20 mph.

Today's spotting distance is ~.6 mile with a probability of ignition of 90%.

SPECIFIC:

Division A/W: Remaining heat is located in partially burned islands well interior of containment lines. Activity in these areas will increase early today and remain actively creeping with isolated torching and group torching where heat is located below areas of unburned conifer.

Division D: The wind direction and low humidity will again test the fireline that was burned out yesterday. Spots over the line landing in grass fuel types will readily ignite and begin spreading. An isolated chance of outflow winds from a passing cell would increase fire behavior and lead to a greater risk of spotting.

Division M: Uncontained portions of the division have been quiet for several days as crews checked up some areas of concern. The west/southwest winds forecast align fairly well with Chalk Creek and it is still possible for a tree to torch near the bottom of the canyon and throw a spot across the creek resulting in additional fire spread.

Division T: Fire in Nephi canyon has slowly crept its way to the canyon bottom in a couple locations. Live fuels appear to be sufficiently green to hold the fire there temporarily. Spread to the opposite side would occur from torch/spot activity. At that elevation, rapid uphill runs are not anticipated however if winds align well expect an uphill run especially if associated with conifer stands.

Structure Group: Continue to stay vigilant for cumulus to the east. Outflow winds remain an isolated possibility but have been occurring nearly daily.

AIR OPERATIONS: No impacts anticipated

SAFETY

Changes in fire behavior are always present in incidences of shelter deployment. Firefighters need to maintain situation awareness of live and dead fuel moisture conditions, as well as predicted and current weather conditions. As fire behavior moves from mild to moderate to extreme, it is critical to respond correctly to the changing situation.

Division/Group Assignment List (ICS 204 WF)
Controlled Unclassified Information//Basic

1. Incident Name:			3.			
HALFWAY HILL			Branch:		Division/Group	
2. Operational Period: DAY			A/W			
Date/Time From: 07/23/2022 0600 SAT		Date/Time To: 07/23/2022 2000 SAT				
4. Operations Personnel						
PLANNING OPS		BRUINGTON, KRIS		FIELD OPS		COATES, CLINT STEPHENS, CLAY (T)
OPS		SIEMERS, NATE		DIVISION/GROUP SUPERVISOR		WILLIAMS, JAKE HELSTERN, BROCK (T)
AIR ATTACK SUPERVISOR		HODGES, GENE MELTON, MIKE				
5. Resources Assigned this Period						
Strike Team / Task Force / Resource Designator		LWD	Leader	Number Persons	Drop Off PT./Time	Pick Up PT./Time
E-115 ENG3 UT-WDD - ENG 5320*			SHIELDS, RUSSELL	4	ICP/0600	ICP/2000
E-116 ENG3 UT-WDD - ENG 5322 *			STEVENS, ROYCE	4	ICP/0600	ICP/2000
E-14 ENG4 ID-BOF - 412		07/23	BERTALOTTO, COLBY DEAN	6	ICP/0600	ICP/2000
E-111 ENG6 RED TRUCK WILDFIRE		07/24	RICHARDS, MICHAEL	3	ICP/0600	ICP/2000
E-135 ENG6 NORTHERN UTAH FIRE LLC - 1FDAW57P03EB39485		08/05	GORDON, TONY	3	ICP/0600	ICP/2000
E-136 ENG6 BRIGHAM CITY FD - BR21		08/05	DESANDRE, ANTHONY R	2	ICP/0600	ICP/2000
E-132 EXC2 CUTTING EDGE CONTRACTORS INC - CAT0316ELDZW01675		08/04	RIGGS, TOM	2	ICP/0600	ICP/2000
E-2 WTT2 UT-CLD - WT4910		07/30	JULANDER, DAMEON	1	ICP/0600	ICP/2000
E-23 WTT2 WEBER FD - WT265		07/23	SEXTON, THOMAS R	2	ICP/0600	ICP/2000
C-2.1 TFLD MANESS, CHASE KEVIN		07/23		1	ICP/0600	ICP/2000
O-59 TFLD MILLER, KEN		07/25		1	ICP/0600	ICP/2000
O-108 TFLD WHITE, TRAVIS D (T)		07/23		1	ICP/0600	ICP/2000
O-47 EMPF LEVERENZ, NICOLE		07/25		1	ICP/0600	ICP/2000
6. Control Operations/Work Assignments:						
<p>DIV A</p> <p>Secure and mop-up the along the line in the area of the burnout operation to the extent necessary to prevent any potential flare ups or spots that could threaten the line. Continue to maintain careful watch for any potential threats to the control line from the A/W break to the A/D break.</p> <p>Prepare for any backhaul and demobilization of unneeded resources and supplies.</p> <p>Successful completion of this would further secure the containment lines, minimizing the potential fire impacts to the Virginia Hills subdivision, and surrounding residences.</p> <p>Coordinate with the READ on suppression repair needs utilizing the excavator.</p> <p>Needs: None</p>						
8. Division/Group Communication Summary						
Function	Channel	RX Frequency N/W	RX Tone/NAC	TX Frequency N/W	TX Tone/NAC	Mode
TACTICAL	1	168.0500	123.0	168.0500	123.0	A
9. Prepared By (Resource Unit Leader)			Approved By (Planning Section Chief)		Date	Time
CHERIE AUSGOTHARP, RESL			TONY PISCOPO, PSC2		07/22/2022	2100

Division/Group Assignment List (ICS 204 WF)
Controlled Unclassified Information//Basic

1. Incident Name:			3.			
HALFWAY HILL			Branch:		Division/Group	
2. Operational Period: DAY					A/W	
Date/Time From: 07/23/2022 0600 SAT		Date/Time To: 07/23/2022 2000 SAT				
4. Operations Personnel						
PLANNING OPS		BRUINGTON, KRIS		FIELD OPS		COATES, CLINT STEPHENS, CLAY (T)
OPS		SIEMERS, NATE		DIVISION/GROUP SUPERVISOR		WILLIAMS, JAKE HELSTERN, BROCK (T)
AIR ATTACK SUPERVISOR		HODGES, GENE MELTON, MIKE				
6. Control Operations/Work Assignments:						
<p>DIV W Continue to regularly check the line through the most appropriate method to ensure nothing will impact the containment along the control lines. Needs: None</p>						
7. Special Instructions:						
<p>DIV A Initial Attack resources designated by * Visit weed wash station frequently, especially if you are changing working locations on the fire. Be aware of cattle and permittees in the fire area. Notify DIVS of any cattle around active fire. DIVS report locations of cattle to the LOFR. Coordinate with the READ or Archeologist before any new dozer line is established. Water tenders track how many tanks are filled from the hydrant, and turn in that number to the DIVS. Areas of resource concern that need to be avoided are marked with white flagging.</p> <p>DIV W Initial Attack resources designated by * Visit weed wash station frequently, especially if you are changing working locations on the fire.</p>						
8. Division/Group Communication Summary						
Function	Channel	RX Frequency N/W	RX Tone/NAC	TX Frequency N/W	TX Tone/NAC	Mode
TACTICAL	1	168.0500	123.0	168.0500	123.0	A
9. Prepared By (Resource Unit Leader)			Approved By (Planning Section Chief)		Date	Time
CHERIE AUSGOTHARP, RESL			TONY PISCOPO, PSC2		07/22/2022	2100

Division/Group Assignment List (ICS 204 WF)
Controlled Unclassified Information//Basic

1. Incident Name:				3.		
HALFWAY HILL				Branch:		Division/Group
2. Operational Period: DAY				D		
Date/Time From: 07/23/2022 0600 SAT		Date/Time To: 07/23/2022 2000 SAT				
4. Operations Personnel						
PLANNING OPS		BRUINGTON, KRIS		FIELD OPS		COATES, CLINT STEPHENS, CLAY (T)
OPS		SIEMERS, NATE		DIVISION/GROUP SUPERVISOR		STEWART, CHANCE MORAN, BRIAN (T)
AIR ATTACK SUPERVISOR		HODGES, GENE MELTON, MIKE				
5. Resources Assigned this Period						
Strike Team / Task Force / Resource Designator		LWD	Leader	Number Persons	Drop Off PT./Time	Pick Up PT./Time
C-2 CRW1 CRW1 - RUBY MOUNTAIN IHC		07/23	ZABALA, JUSTIN	19	ICP/0600	ICP/2000
C-19 CRW1 LOGAN IHC		07/30	BAKER, RYAN C	23	ICP/0600	ICP/2000
C-9 CRW1 LAKEVIEW IHC		07/25	BLOFSKY, ALLAN M	22	ICP/0600	ICP/2000
C-8 CR2I SILVER STATE IHC		07/23	KELLY, KEVIN	18	ICP/0600	ICP/2000
C-15 CR2I CENTENNIAL		07/23	ZIMMER, DOUGLAS	19	ICP/0600	ICP/2000
E-15 ENG3 LONE PEAK FD - E3201		07/23	WILLDEN, CHRIS	4	ICP/0600	ICP/2000
E-16 ENG4 LONE PEAK - E491		07/23	THATCHER, KYLE	6	ICP/0600	ICP/2000
E-114 ENG4 UT-WDD - ENG 5424*		07/23	STONER, KODY	4	ICP/0600	ICP/2000
E-17 ENG6 UFA FD - E6301		07/23	WINBURN, MICHELLE	4	ICP/0600	ICP/2000
E-18 ENG6 SMITHFIELD FD - BR641		07/23	HOOTON, DUSTIN	3	ICP/0600	ICP/2000
E-19 ENG6 WOODLAND HILLS FD - BR192		07/23	WOLLEBAEK, LANCE	3	ICP/0600	ICP/2000
E-21 WTT1 WE HAUL H2O - "NESSIE"		07/23	WARREN, KIPP	2	ICP/0600	ICP/2000
E-58 WTS2 KIT CONTRACTING		07/23	HALEY, ADAM	1	ICP/0600	ICP/2000
E-28 DZR2 ALLEN'S WATER TENDER		07/24	ALLEN, JOHN	2	ICP/0600	ICP/2000
O-57 TFLD DAY, DAVID R		07/25		1	ICP/0600	ICP/2000
O-25 HEQB HAYS, RUSSELL DAVID		07/23		1	ICP/0600	ICP/2000
O-58 HEQB ELLIS, MILES		07/25		1	ICP/0600	ICP/2000
8. Division/Group Communication Summary						
Function	Channel	RX Frequency N/W	RX Tone/NAC	TX Frequency N/W	TX Tone/NAC	Mode
TACTICAL	2	168.2000	123.0	168.2000	123.0	A
9. Prepared By (Resource Unit Leader)			Approved By (Planning Section Chief)		Date	Time
CHERIE AUSGOTHARP, RESL			TONY PISCOPO, PSC2		07/22/2022	2100

Division/Group Assignment List (ICS 204 WF)
Controlled Unclassified Information//Basic

1. Incident Name:				3.		
HALFWAY HILL				Branch:	Division/Group D	
2. Operational Period: DAY						
Date/Time From: 07/23/2022 0600 SAT		Date/Time To: 07/23/2022 2000 SAT				
4. Operations Personnel						
PLANNING OPS	BRUINGTON, KRIS			FIELD OPS	COATES, CLINT STEPHENS, CLAY (T)	
OPS	SIEMERS, NATE			DIVISION/GROUP SUPERVISOR	STEWART, CHANCE MORAN, BRIAN (T)	
AIR ATTACK SUPERVISOR	HODGES, GENE MELTON, MIKE					
5. Resources Assigned this Period						
Strike Team / Task Force / Resource Designator	LWD	Leader	Number Persons	Drop Off PT./Time	Pick Up PT./Time	
O-36 HEQB BRISTOL, MARC DAVID (T)	07/25		1	ICP/0600	ICP/2000	
O-43 EMPF ANDERSON, CODY SCOTT	07/24		1	ICP/0600	ICP/2000	
6. Control Operations/Work Assignments:						
<p>Utilize the tactics that will provide the highest probability of success in securing the fires edge around Horse Hollow, further minimizing fire growth and potential impacts to the water ways during heavy rain events.</p> <p>Work to establish better depth off the indirect handline, in coordination with the aerial ignition operation.</p> <p>Successfully securing this line will minimize the potential for future fire spread to the north into the North Fork of Chalk Creek drainage, and west towards the community.</p> <p>Needs: None</p>						
7. Special Instructions:						
<p>Initial Attack resources designated by *</p> <p>Visit weed wash station frequently, especially if you are changing working locations on the fire.</p> <p>Be aware of cows and local ranchers in the fire area. Notify DIVS of any cattle around active fire, or within the indirect line perimeter. DIVS report locations of cattle to the LOFR.</p> <p>Coordinate with the READ or Archeologist before any new dozer line is established.</p> <p>Continue to update progress of completed road prep into Field Maps.</p>						
8. Division/Group Communication Summary						
Function	Channel	RX Frequency N/W	RX Tone/NAC	TX Frequency N/W	TX Tone/NAC	Mode
TACTICAL	2	168.2000	123.0	168.2000	123.0	A
9. Prepared By (Resource Unit Leader)			Approved By (Planning Section Chief)		Date	Time
CHERIE AUSGOTHARP, RESL			TONY PISCOPO, PSC2		07/22/2022	2100

Division/Group Assignment List (ICS 204 WF)
Controlled Unclassified Information//Basic

1. Incident Name:			3.			
HALFWAY HILL			Branch:		Division/Group	
2. Operational Period:						
DAY						
Date/Time From: 07/23/2022 0600 SAT		Date/Time To: 07/23/2022 2000 SAT		M		
4. Operations Personnel						
PLANNING OPS		BRUINGTON, KRIS		FIELD OPS		COATES, CLINT STEPHENS, CLAY (T)
OPS		SIEMERS, NATE		DIVISION/GROUP SUPERVISOR		MECHAM, BODE TEEPLES, JARAD (T)
AIR ATTACK SUPERVISOR		HODGES, GENE MELTON, MIKE				
5. Resources Assigned this Period						
Strike Team / Task Force / Resource Designator		LWD	Leader	Number Persons	Drop Off PT./Time	Pick Up PT./Time
O-110 WFM2 MODULE EAGLE LAKE		08/04	BORDEN, BRANDON	8	ICP/0600	ICP/2000
E-93 ENG6 UINTAH FIRE - BRUSH 41 - 151267		07/23	PERRY, PATRICK F	2	ICP/0600	ICP/2000
E-110 ENG6 SCHOLL FIRE & FUELS MANAGEMENT, INC. - 1FDOW5HT		07/27	HAYS, BEN	3	ICP/0600	ICP/2000
O-46 EMPF RETZER, BEAU		07/25		1	ICP/0600	ICP/2000
6. Control Operations/Work Assignments:						
Continue to check the hand-line along Chalk Creek Road near Copley's Canyon trail to the Pistol Rock Rec Site.						
Continue to check the fires edge along Chalk Creek to the Cedar Springs and Nephi Canyon confluence.						
Prepare for any backhaul and demobilization of unneeded resources and supplies.						
Needs: None						
7. Special Instructions:						
Phone number to call in for morning briefing: 929-336-2435, Conf. ID: 284 682 563#						
Visit weed wash station frequently, especially if you are changing working locations on the fire.						
Be aware of cattle and permittees in the fire area. Notify DIVS of any cattle around active fire. DIVS report locations of cattle to the LOFR.						
Areas of resource concern that need to be avoided are marked with white flagging.						
8. Division/Group Communication Summary						
Function	Channel	RX Frequency N/W	RX Tone/NAC	TX Frequency N/W	TX Tone/NAC	Mode
TACTICAL	5	166.7750	123.0	166.7750	123.0	A
9. Prepared By (Resource Unit Leader)			Approved By (Planning Section Chief)		Date	Time
CHERIE AUSGOTHARP, RESL			TONY PISCOPO, PSC2		07/22/2022	2100

Division/Group Assignment List (ICS 204 WF)
Controlled Unclassified Information//Basic

1. Incident Name:				3.		
HALFWAY HILL				Branch:	Division/Group T	
2. Operational Period: DAY						
Date/Time From: 07/23/2022 0600 SAT		Date/Time To: 07/23/2022 2000 SAT				
4. Operations Personnel						
PLANNING OPS	BRUINGTON, KRIS			FIELD OPS	COATES, CLINT STEPHENS, CLAY (T)	
OPS	SIEMERS, NATE			DIVISION/GROUP SUPERVISOR	GLOVER, ZACH HANSEN, RACHAEL (T)	
AIR ATTACK SUPERVISOR	HODGES, GENE MELTON, MIKE					
5. Resources Assigned this Period						
Strike Team / Task Force / Resource Designator	LWD	Leader	Number Persons	Drop Off PT./Time	Pick Up PT./Time	
E-96 ENG4 ID-IFD - 3421	07/23	TOY, DARIN	4	TANGO SPIKE/0600	ICP/2000	
O-92 EMPF PROCEDO, STEPHEN	07/27		1	TANGO SPIKE/0600	ICP/2000	
6. Control Operations/Work Assignments:						
<p>Monitor the fires progression in the Nephi Canyon area for any active fire movement that could threaten the indirect line along the Paiute D-1 road to the T/W break. This will prevent further spread of the fire into the roadless area East of the Paiute D-1 road.</p> <p>Complete any backhaul and removal of any trash by the end of shift.</p> <p>Needs: None</p>						
7. Special Instructions:						
<p>Phone number to call in for morning briefing: 929-336-2435, Conf. ID: 284 682 563#</p> <p>Be aware of cattle and permittees in the fire area. Notify DIVS of any cattle around active fire. DIVS report locations of cattle to the LOFR.</p> <p>Areas of resource concern that need to be avoided are marked with white flagging.</p> <p>Continue to update progress of completed prep into Field Maps.</p>						
8. Division/Group Communication Summary						
Function	Channel	RX Frequency N/W	RX Tone/NAC	TX Frequency N/W	TX Tone/NAC	Mode
TACTICAL	3	168.6000	123.0	168.6000	123.0	A
9. Prepared By (Resource Unit Leader)			Approved By (Planning Section Chief)		Date	Time
CHERIE AUSGOTHARP, RESL			TONY PISCOPO, PSC2		07/22/2022	2100

1. INCIDENT NAME	2. OPS PERIOD DATE	START TIME	END TIME	SUNRISE	SUNSET TIME
Halfway Hill Fire	07/23/2022	0600	2000	0622	2048

3. REMARKS (Safety Notes, Hazards)
 ICP Operational Briefing 0600/ Helibase Briefing 0800
Call in potential helispot lat/longs to helibase for approval/improvement
 All medivacs will be coordinated through Halfway Hill Communications
 Request aviation needs through Air Attack if over fire or through Fillmore Helibase
 Be aware of powerlines in canyon corridors and near dip sites
Ensure lines are clear before initiating drop sequence
Report # dips by dip site to helibase at the end of each fuel cycle

4. READY ALERT AIRCRAFT
Initial Attack:
 205LM, 7PJ, 3SH
Medivac:
 3SH, 7PJ, 205LM

5. AIRSPACE INFORMATION
 TFR Notam FDC 2/2724
 Polygon to 13,000' MSL
 From: 38°50'37"N 112°23'24"W
 To: 38°58'53"N 112°19'23"W
 To: 38°58'30"N 112°05'39"W
 To: 38°50'18"N 112°07'27"W
 Contact Frequency: 133.9750

6. PERSONNEL	NAME	PHONE #	7. FREQUENCIES	VHF-AM	VHF-FM
Air Operations Branch Director Air Operations Branch Director (T)	Kevin Greenhalgh Ray Raddatz	435-691-3771 208-871-7537	A/A Fixed Wing (TFR) A/A Rotor	133.9750 132.7750	
Air Support Group Supervisor Air Support Group Supervisor (T)	Dave Frey James Russell	208-731-8033 406-223-6598	A/G Primary A/G Secondary		168.4000 169.1500
Air Tactical Group Supervisor Air Tactical Group Supervisor	Gene Hodges Mike Melton	208-313-7826 435-590-4712	Medivac Air Ambulance V/MED 28		155.3400 156.7 Tx Tone
Helibase Manager Helitorch Manager	Mike Byers/ASGS as needed Mike Byers	801-510-3433	Local I/A Air to Ground A/G 18 A/G 21		168.0125 168.1500

8. FIXED WING AIRCRAFT

FAA #	RO #	TY	MAKE/MODEL	BASE	START	AVAILABLE	PERSONNEL	REMARKS
N231AV	A-38	1	Twin Commander 690B	Richfield Airport	0700	0800	Melton	
N295AM	A-26	1	King Air 200	Richfield Airport	0700	0800	Hodges	First Up

9. UNMANNED AIRCRAFT SYSTEMS (UAS)

CALL SIGN	TYPE	MAKE/MODEL	PERSONNEL	REMARKS
Unmanned R31	3	DJI M600	Milton Truong 541-274-9134 Eric Ogden 541-880-8554	Lakeview IHC, IR and PSD capable

10. HELICOPTERS										Codes: C=Cargo P=Passengers B=Bucket SN=Snorkel R=Rappel SH=Short Haul S=Step E=Extraction M=Medical Evacuation H=Hoist EU=Exclusive Use HT=Helitorch									
FAAN#	RO#	TY	MAKE/ MODEL	BASE	AVAIL	REMARKS	FAAN#	RO#	TY	MAKE/ MODEL	BASE	AVAIL	REMARKS						
N407PJ	A-	3	Bell 407	Richfield Airport	0800	C,P,B,M,EU,HT	N603CK	A-13	1	Sikorsky UH-60A+	Fillmore Helibase	0800	B,C,CWN						
N353SH	A-51	2	Eurocopter AS350B3	Fillmore Helibase	0800	C,P,SH,M,EU,HT	N611CK	A-14	1	Sikorsky SH-3H	Fillmore Helibase	0800	B,EU						
N205LM	A-42	3	Bell 205A1++	Fillmore Helibase	0800	C,P,R,B,M,EU,HT	N161KA	A-50	1	Kaman KMax 1200	Fillmore Helibase	0800	B,C,CWN						

11. PLANNED MISSIONS				
MISSION	START	FROM LOCATION	TO LOCATION	REMARKS
Aerial Supervision	0900	Richfield Airport	Fire	Constant Coverage 0900-2000
Recon	TBD	Fillmore Helibase	Fire	As requested
Bucket Support	TBD	Fillmore Helibase	Fire	As requested
Logistical Load Delivery	TBD	Fillmore Helibase	Fire	As requested
Initial Attack Support	TBD	Fillmore Helibase	Fire	As requested
Aerial Ignition (PSD/helitorch)	TBD	Fillmore Helibase/Div D/Cargo	Division D	As requested/prioritized through Ops
IR/Mapping (UAS)	TBD	Division D	TBD	As requested/prioritized through Ops
Rappel/STEP/Short Haul	TBD	Fillmore Helibase	TBD	As requested/prioritized through Ops

12. AVIATION LOCATIONS					
LOCATION	APPROVED	LATITUDE X LONGITUDE	LOCATION	APPROVED	LATITUDE X LONGITUDE
Fillmore Helibase		38°57.464' N x 112°21.729' W	H-20 (Div T)	Type 2	38°54.929' N x 112°08.605' W
H-2 (Div W)	Type 2	38°53.768' N x 112°08.605' W	H-25 (Div T)	Type 2	38°56.073' N x 112°08.010' W
H-5 (Div W)	Type 2	38°53.170' N x 112°17.131' W	H-30 (Div M)	Type 2	38°55.749' N x 112°09.784' W
H-7 (Div W)	Type 2	38°52.430' N x 112°15.181' W	H-35 (Div M)	Type 3	38°56.607' N x 112°11.345' W
H-9 (Div W)	Type 2	38°51.610' N x 112°13.631' W	H-37 (Div M)	Type 3	38°56.852' N x 112°11.955' W
H-10 (Div T)	Type 2	38°51.188' N x 112°13.690' W	H-39 (Div M)	Type 3	38°55.635' N x 112°13.802' W
H-12 (Div T)	Type 2	38°52.409' N x 112°11.398' W	H-40 (Div D)	Type 3	38°56.879' N x 112°14.389' W
H-15 (Div T)	Type 2	38°53.428' N x 112°10.101' W	H-41 (Div D)	Type 3	38°55.552' N x 112°14.413' W
Cargo Site/Heli-torch Base	Type 2	38°57.491' N x 112°17.940' W	H-42 (Div D)	Type 2	38°55.363' N x 112°14.792' W
			H-45 (Div A)	Type 2	38°55.834' N x 112°16.220' W

Krassel Helitack Short-Haul Operations N353SH

CAPABILITIES <ul style="list-style-type: none">• With short-haul, the helicopter can insert short-haulers into an area with tight canopy cover, technical terrain or simply a place a helicopter cannot land.• Available haul line lengths range from 100 feet to 250 feet.• Short-haul EMTs and/or medical gear can be delivered even if extraction by short-haul is not necessary.	ON-SCENE <ul style="list-style-type: none">• 1 or 2 rescuers (at least one qualified as an EMT or higher).• BLS medical gear including spinal immobilization equipment.• All equipment necessary for short-haul extraction.
ORDERING <ul style="list-style-type: none">• EMT or Medical Incident IC determines if medical extraction is required.• Do not wait or delay patient care while waiting for the short-haul crew to arrive.• Utilize the Medical Incident Report (MIR) provided in the Incident Action Plan (IAP).• Confirm estimated time of arrival and radio frequency.• Be prepared to give incoming aircraft information including, hazards, terrain, wind, brief patient update, and patient weight.	COMMON MISCONCEPTIONS <ul style="list-style-type: none">• short-haul is not a last resort.• short-haul is not just for trauma patients.• A 'green patient' should not be extracted via short-haul. False, if a green patient is in 'red' terrain that could pose a hazard to crews trying to extricate them (steep slopes, greater than ¼ mile carries, poor footing, extreme high or low temperatures etc.) short-haul is an appropriate choice.



PROCESS: During insertion and extraction ground personnel must be clear of the area. The helicopter will fly to the coordinates provided, and contact ground personnel on Air to Ground. Upon completion of the short-haul recon and size up, a patient update will be communicated from the ground and the aircraft will depart the area and fly to a landing zone (LZ) to configure for short-haul. The helicopter will be monitoring the appropriate air-to-ground, air guard and VHF frequencies. From this point, ground resources should only contact the helicopter in case of emergency.

Incident:

Halfway Hill Fire

Date:

7/23/2022

Operational Period:

Day Shift



SAFETY MESSAGE



Fire fighter safety comes first on every fire, every time

MAJOR 215 A HAZARDS AND RISKS

- | | |
|--|--|
| <ul style="list-style-type: none"> • Heat related illnesses • Excessive Heat and Strong Erratic Winds • Driving rough steep winding roads • UTV/ATV use • Heavy Equipment • Wildlife (Rattle Snakes/Bees/Ticks etc....) • Extremely Dry Fuels, Erratic fire behavior • Short/Long range spotting | <ul style="list-style-type: none"> • Air Operations • Rolling material on steep slopes • Steep rocky, rough terrain -falls/slips • COVID-Physical Distancing • Food Consumption-eat within two hours • Hazard Trees and Chain saw Operations • Personal Hygiene- Sanitize twice daily |
|--|--|

Accumulated (chronic) Fatigue is defined as fatigue from which normal rest does not produce recovery. Accumulated fatigue is often caused by extended periods of stress with inadequate recovery periods, which results in decreased productivity, compromised immune function, and reduced alertness. Fatigued workers perform poorly, behave carelessly, tolerate greater errors, and become inattentive. Chronic fatigue often results in increased stress, which may present itself through certain behavioral and physiological indicators, such as those described below:

Behavioral indicators:

-Decreased motivation and low morale.

-Increased irritability and depression.

Physiological indicators:

-Confusion, poor problem-solving.

-Poor abstract thinking.

-Poor attention/decisions.

-Poor concentration/memory.

-Extreme emotional responses.

-Social/behavioral changes.

Recommendations for chronic fatigue/stress are:

-Take longer periods of rest/recovery.

-Ensure that workers are adequately rested before they begin work shifts.

-Provide periodic rest breaks to allow physical and mental recovery.

Alternate between heavy and light tasks.

Eat well-balanced meals regularly, with energy supplements during periods of high exertion.

-Maintain hydration.

-Ensure workers maintain good personal hygiene.

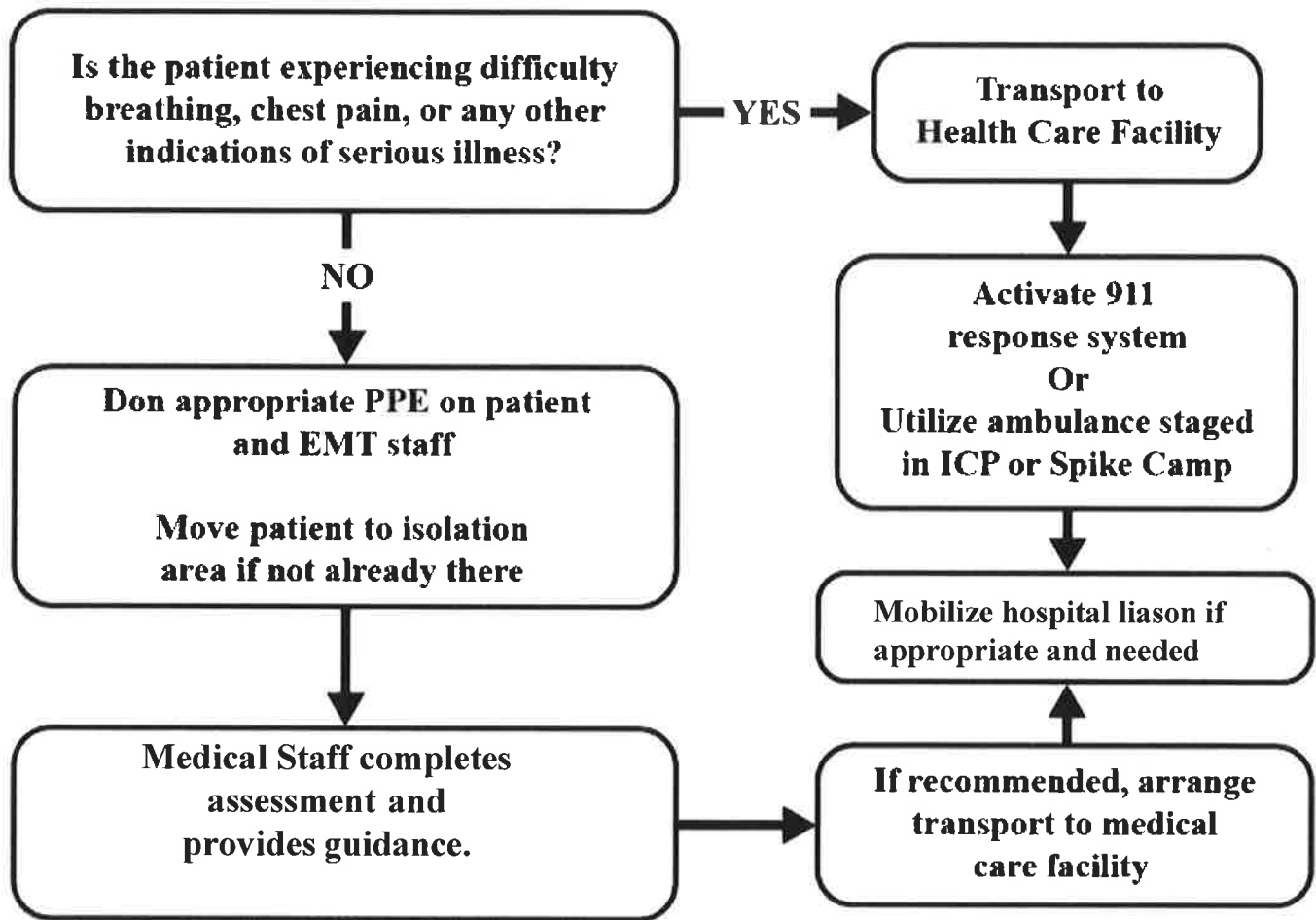
-Maintain high standards of physical fitness and work capacity.

-In extreme cases, personnel may need to be relieved of their duties.

Your Safety Team – Skeet Houston (SOF2), Brian Burbridge (SOF2), Wes Lathen (SOF2), Tracy Connelly (SOF2) -T

An individual is identified with a possible COVID-19 infection based on the screening tool.

Cough more than expected? Shortness of breath or difficulty breathing? Fever? Chills? Muscle pain outside your normal for firefighting? Sore throat? New loss off taste or smell? Temperature greater than 100.4?



NWCG COVID Screening Tool



Following COVID-19 Test Results options are:
Return to work
Isolate
Demobilization off Incident

INCIDENT RADIO COMMUNICATIONS PLAN (ICS 205)

Controlled Unclassified Information//Basic

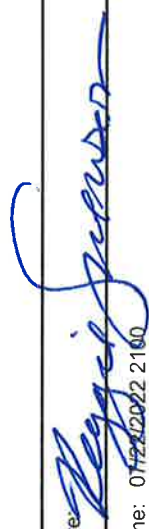
1. Incident Name:	2. Date/Time Prepared:	3. Operational Period:
HALFWAY HILL	Date: 07/22/2022 Time: 2100	DAY SAT
	Date/Time From: 07/23/2022 0600	Date/Time To: 07/23/2022 2000
		SAT SAT

4. Basic Radio Channel Use:

Zone Group	Ch #	Function	Channel Name/Trunked Radio System Talkgroup	Assignment	RX Freq	RX Tone/NAC	TX Freq	TX Tone/NAC	Mode (A, D, or M)	Remarks
	1	TACTICAL	TAC1	DIV A/W	168.0500	123.0	168.0500	123.0	A	DIV A/W
	2	TACTICAL	TAC 2	DIV D	168.2000	123.0	168.2000	123.0	A	DIV D
	3	TACTICAL	TAC 3	DIV T	168.6000	123.0	168.6000	123.0	A	DIV T
	4	TACTICAL	TAC 4	UNASSIGNED	166.7250	123.0	166.7250	123.0	A	UNASSIGNED
	5	TACTICAL	TAC 5	DIV M	166.7750	123.0	166.7750	123.0	A	DIV M
	6	TACTICAL	TAC 6	UNASSIGNED	168.2500	123.0	168.2500	123.0	A	UNASSIGNED
	7	COMMAND	CMD 7	CMD	170.4500	123.0	168.1000	123.0	A	WHITE PINE PEAK
	8	COMMAND	CMD 8	CMD	169.5375	123.0	164.7125	123.0	A	DEVILS KITCHEN
	10	COMMAND	BLM WHITE PINE	CMD	172.6250	0.0	164.9500	103.5	A	BLM WHITE PINE REPEATER
	11	COMMAND	NOTCH	CMD	172.4375	0.0	166.0000	167.9	A	BLM NOTCH PEAK REPEATER
	12	COMMAND	FS DELTA	CMD	172.2500	0.0	165.0125	123.0	A	FS DELTA REPEATER
	13	AIR TO GROUND	A/G PRI	AIR	168.4000	0.0	168.4000	0.0	A	AIR TO GROUND PRIMARY
	14	AIR TO GROUND	A/G SEC	AIR	169.1500	0.0	169.1500	0.0	A	AIR TO GROUND SECONDARY
	15	AIR TO GROUND	VMED 28	AIR	155.3400	0.0	155.3400	156.7	A	MEDEVAC
	16	AIR GUARD	AIRGUARD	EMERGENCY	168.6250	0.0	168.6250	110.9	A	AIR GUARD

5. Special Instructions:

6. Prepared By (Communications Unit Leader) Name: REGGIE SWENSON

Signature: 

ICS 205 IAP Page Date/Time: 07/22/2022 2100

Resource Advisor	Incident Name Halfway Hill	Date/Time Prepared 07/22/2022 18:45	Prepared by MONTCALM
	Operational Period July 23, 2022 Thursday		
Staffing	Name	Assignment/Division	Contact
	Kelly, Sean		Radio
	Montcalm, Jessica	Archaeologist	Cell: 775-385-5162
	Robison, Doug		Radio
	Rooker, Angela	Archaeologist(t)	Radio
RESOURCE OBJECTIVES & OPERATIONAL EMPHASIS			
HERITAGE/CULTURAL RESOURCES <ul style="list-style-type: none"> Protect cultural resources. NOXIOUS WEEDS <ul style="list-style-type: none"> Limit the spread of noxious and invasive weed species. SUPPRESSION REPAIR <ul style="list-style-type: none"> Repair suppression related impacts on the fire. 			
RESOURCE PROTECTION STANDARDS			
Heritage & Cultural – Standards			Division/Area
<ul style="list-style-type: none"> ✓ All cultural resources and human remains are protected. <u>Please leave them in place – no collecting.</u> Please coordinate with the READs if cultural resources are found. 			All
Noxious Weeds – Standards			
<ul style="list-style-type: none"> ✓ WEED WASH: All resources demobilizing from the fire will go through the weed wash before leaving the incident. Weed wash location has been established 			All
Suppression Repair - Standards			
<ul style="list-style-type: none"> ✓ GENERAL: Follow the suppression repair standards provided in the Suppression Repair Plan and as outlined below. Limit further soil disturbance. ✓ DOZER LINES: <ul style="list-style-type: none"> o Pull berms and associated material back into the bladed area. Re-contour as possible. o As able, spread the brush, limbs, rocks or sod back across the exposed soils of the fireline. o Discourage off-road travel on dozer lines by ripping the soil or placing boulders, logs, or other natural features on dozer lines where they tie into established roads. o Remove material from ephemeral drainages. Avoid pushing sediment into draws, wet areas, or waterways. ✓ HANDLINE <ul style="list-style-type: none"> o Remove "cup trenches" on perimeter line. o As possible, pull back berms, topsoil, and organic debris to blend with adjacent undisturbed ground. ✓ SLASH PILES <ul style="list-style-type: none"> o Disperse slash piles along roads and other features to limit the concentration of fuels. ✓ DROP POINTS/STAGING AREAS/HELISPOTS/DIP SITES/SPIKE CAMPS <ul style="list-style-type: none"> o Remove all trash and debris, backhaul all unused supplies. o In areas where trees or shrubs were cut or cleared, pull slash back in to minimize visibility. o In areas with excessive soil disturbance reseed if determined necessary by a resource advisor. 			All
Suppression Repair - SPECIFICS			
<ul style="list-style-type: none"> ✓ REMAINING DOZER LINE IN ALPHA – SENSITIVE SEGMENT: <ul style="list-style-type: none"> o Using hand tools, pull berms and associated material back into the bladed area. Re-contour as possible, but not outside of the dozer cut. o As able, spread the brush, limbs, rocks or sod back across the exposed soils of the fireline. ✓ SLASH PILES <ul style="list-style-type: none"> o Disperse slash piles along roads and other features to limit the concentration of fuels. 			Alpha, Delta, All

Great Basin Team 4

Virtual Documentation Instructions



Virtual Check-In Options:

Option 1:

Utilize QR code on IAP cover for check-in form or at <https://bit.ly/2Rr545v> (case sensitive, all lower case) to expedite check-in. Please stop by Check-In once you arrive at the incident to finalize the check-in process.

Option 2:

Fill-out a provided hard copy Check-In Form and send a scanned copy or a picture to:

2022.halfwayhill.resources@firenet.gov

Option 3:

Access the Great Basin Coordination Center webpage. Navigate to Overhead/ Teams, then to IMT Toolbox. Download the appropriate check-in form. Open form in Adobe, fill-out form (should be a fillable pdf when opened in Adobe) and save. Email completed form to:

2022.halfwayhill.resources@firenet.gov

Demobilization Process:

Step 1: All demobing resources will first call or stop by the Demob/check-in window to verify status. Demob - [208-891-6158](tel:208-891-6158)

Step 2: Return any radios or checked-out supplies.

Step 3: Equipment will need to go through weed wash and Ground Support to obtain post inspection.

Step 4: Closeout Time with the Finance Section

Step 5: Once all steps are completed the resource will call or stop by Demob/Check-in for final verification.

HALFWAY HILL INCIDENT

UT-SCS-220216

SUBMITTING TIME

- CTRs and Shift Tickets should be submitted at a minimum, every other day.
- Justifications are required in the remarks when posting Time without meal breaks.
- Hazard Pay is required to be justified in the remarks, such as: “Firefighting on an uncontrolled Fireline.”
- The preferred method of turning in CTR’s, Shift Tickets, or other associated Time documents is direct to our Finance email: 2022.halfwayhill.finance@firenet.gov.
- Taking a picture of your signed CTR/Shift Ticket is perfectly acceptable.
- If electronic delivery is not an option for you, we will accept hard copies at the Finance yurt.
- Our Finance email does not have an auto reply.

Fillable PDF CTR/Shift Ticket:

Acceptable PDF’s- We provide acceptable templates on the Virtual Documentation page within the IAP. However, we accept any version that is signable and has all of the required fields. Be mindful of what browser you open the PDF in, downloading the PDF form tends to prevent filling and signature issues.

Option 1 - Resource fills out CTR/Shift Ticket and e-mails to supervisor for signature. Supervisor digitally signs CTR then e-mails signed copy back to resource AND resource forwards to Finance: 2022.halfwayhill.finance@firenet.gov.

Option 2 – Resource fills out CTR, supervisor (if comfortable) signs directly on same device. Resource e-mails CTR directly to 2022.halfwayhill.finance@firenet.gov.

Picture of Hard Copy CTR/Shift Ticket:

Option 1 – Resource fills out hard copy CTR, supervisor signs hard copy. Resource takes a picture of the signed document, reviews picture to ensure it’s legible, and emails to Finance: 2022.halfwayhill.finance@firenet.gov.

Option 2 - Resource fills out hard copy CTR, snaps a picture of CTR and e-mails/texts to supervisor. Supervisor digitally signs CTR then e-mails signed copy back to resource AND 2022.halfwayhill.finance@firenet.gov.

Resources on Demob list:

- Ensure all required documents have been sent to Finance and ensure Time submittals are current.

Contact Finance with any questions: 208-891-6158

TRAINING MESSAGE

Training Specialist Check-in If you have a position task book (PTB), please scan the QR code below to initiate the check-in process with the Incident Training Specialist. Please complete the form in its entirety. Upon completion, at your earliest convenience, please email a copy of your qualification card and a photo of your position task book cover (email addresses listed below).

For your convenience, an electronic ICS-225 or ICS-226, Evaluation Record and other appropriate documentation will be sent to you after you complete the check-in process.



[HALFWAY HILL TRAINEE CHECK-IN](#)

Training Specialist Closeout - In order to receive credit for your assignment, you must close out with the Incident Training Specialist prior to demob.

Close out requirements include:

1. Ensure your trainer(s) / evaluator(s) has/have initialed completed tasks in your PTB
2. Obtain an Incident Performance
3. Obtain an Evaluation Record
4. If evaluator initialed #1 on your Evaluation Record, ensure he/she signs as final evaluator (located on the backside of your PTB cover page)
5. Email all documentation (including item #4), when appropriate.
6. Complete Exit Interview (Form will be provided via email)

PRIMARY: JoAnne Ware, Incident Training Specialist (T)

Email: joanne_ware@firenet.gov

SECONDARY: Debra Burgos, Incident Training Specialist (Q)

Email: debra_burgos@firenet.gov

07/23/2022
TENTATIVE RELEASE

HALFWAY HILL US-UT-SCS-220216

CREWS

C-4	0700	(CR2I)	DROMEDARY PEAK
C-5	0700	(CR2I)	FISHLAKE INTERAGENCY
C-17	0800	(CRWC)	CENTRAL UTAH - CREW 06
C-15	1845	(CR2I)	CENTENNIAL
C-8	1900	(CR2I)	SILVER STATE IHC
C-6	2000	(CRWC)	CENTRAL UTAH - CREW 03
C-7	2000	(CRWC)	CENTRAL UTAH - CREW 04

EQUIPMENT

E-28	0830	(DZR2)	ALLEN'S WATER TENDER
E-131	1100	(CHP2)	COLOR COUNTRY TREE
E-21	1300	(WTT1)	WE HAUL H2O - "NESSIE"
E-58	1400	(WTS2)	KIT CONTRACTING
E-104	1400	(PUP1)	RAM 2500 - CO U0Z358 - VIN
E-105	1400	(PUP1)	RAM 2500 - UT U582PS - VIN
E-111	1430	(ENG6)	RED TRUCK WILDFIRE
E-96	1500	(ENG4)	ID-IFD - 3421
E-14	1530	(ENG4)	ID-BOF - 412
E-19	1630	(ENG6)	WOODLAND HILLS FD - BR192
E-17	1830	(ENG6)	UFA FD - E6301
E-59	1930	(WTS2)	WATERBOYZ911, LLC
E-16	1945	(ENG4)	LONE PEAK - , E491
E-34	2000	(HOSU)	WESTERN WILDFIRE L.L.C. -
E-103	2000	(PUP1)	RAM 2500 - UT U796MG - VIN

07/23/2022

OVERHEAD

TENTATIVE RELEASE

O-44	1130	(EMPF)	ALLEN, SEAN
O-25	1815	(HEQB)	HAYS, RUSSELL DAVID
O-58	1830	(HEQB)	ELLIS, MILES
O-36	1845	(HEQB)	BRISTOL, MARC DAVID
O-21	2000	(TFLD)	MECHAM, BODE
O-75	2030	(DIVS)	TEEPLES, JARAD

Incident Replacement Guidelines

Prior to release from the incident, personnel may request replacement of standard equipment and supplies (**NFES**) that were damaged, lost, consumed, or worn out during the incident. Personnel need to document the request on the most applicable form – Incident Replacement Requisition (OF-315), Saw Parts Order, or General Message (OF-213). This request should include a description of the use on the incident and/or why the item(s) need to be replaced. Requests need to be signed by the **Division Supervisor** then approved by the **Operations Section Chief** prior to taking to Supply. Worn out or damaged property **will be turned into the Supply Unit**.

Approval for replacement of non-standard items (**Non NFES**) may need to be approved by the Incident Business Advisor (IBA). You should initiate this process at least two days prior to demob.

Personnel who need to replace/repair damaged property will document the request on an OF-289, Property Loss or Damage Report. This form requires Incident Supervisor recommendation as well as Subject Matter Expert determination, if appropriate. The form will then need to be turned into the Comp/Claims Unit Leader, who will track the claim and facilitate approval by the Finance Section Chief (FSC). Additional documentation may be required by the FSC. The FSC will make a decision, or recommendation to the IBA, as to whether the items can be replaced or repaired with incident funds. After approval, Supply/Ordering will issue S numbers.

Items originally provided through use of preparedness funds which need to be replaced due to **normal wear and tear** (e.g. worn out tire tread, worn out chain saw bar, 5-yr old GPS that stops working, etc.) should be accomplished using home unit funds, not incident funds. If government property was damaged on the incident due to a specific event, (e.g. wind event destroys a tent) the incident could, upon receipt of required documentation and proof of damage, authorize replacement. **Replacement of non standard items that are worn out is the responsibility of the home unit.**

Please feel free to visit Finance, Logistics, or Operations if you have any questions.

GB Team 4

GREAT BASIN IMT LINE SUPPLY ORDER FORM

Date & Time Order Received	Order # (DIVS + #)	Location & Time for Delivery	Mode of Delivery
		(Division#, Helispot#, Drop Point#, Lat. Long, Spike Camp)	(Drive, Helicopter Internal, Long Line, DIVS to Pick up)
Date:		Location:	Ground Support:
Time:		Date/Time needed:	Helibase:
			Pick up by /@

Order received in Communication	Time:	Name:
Order received in Supply	Time:	Name:
Order received in Ground Support	Time:	Name:
Order received by FDUL	Time:	Name:
Order received by Helibase	Time:	Name:

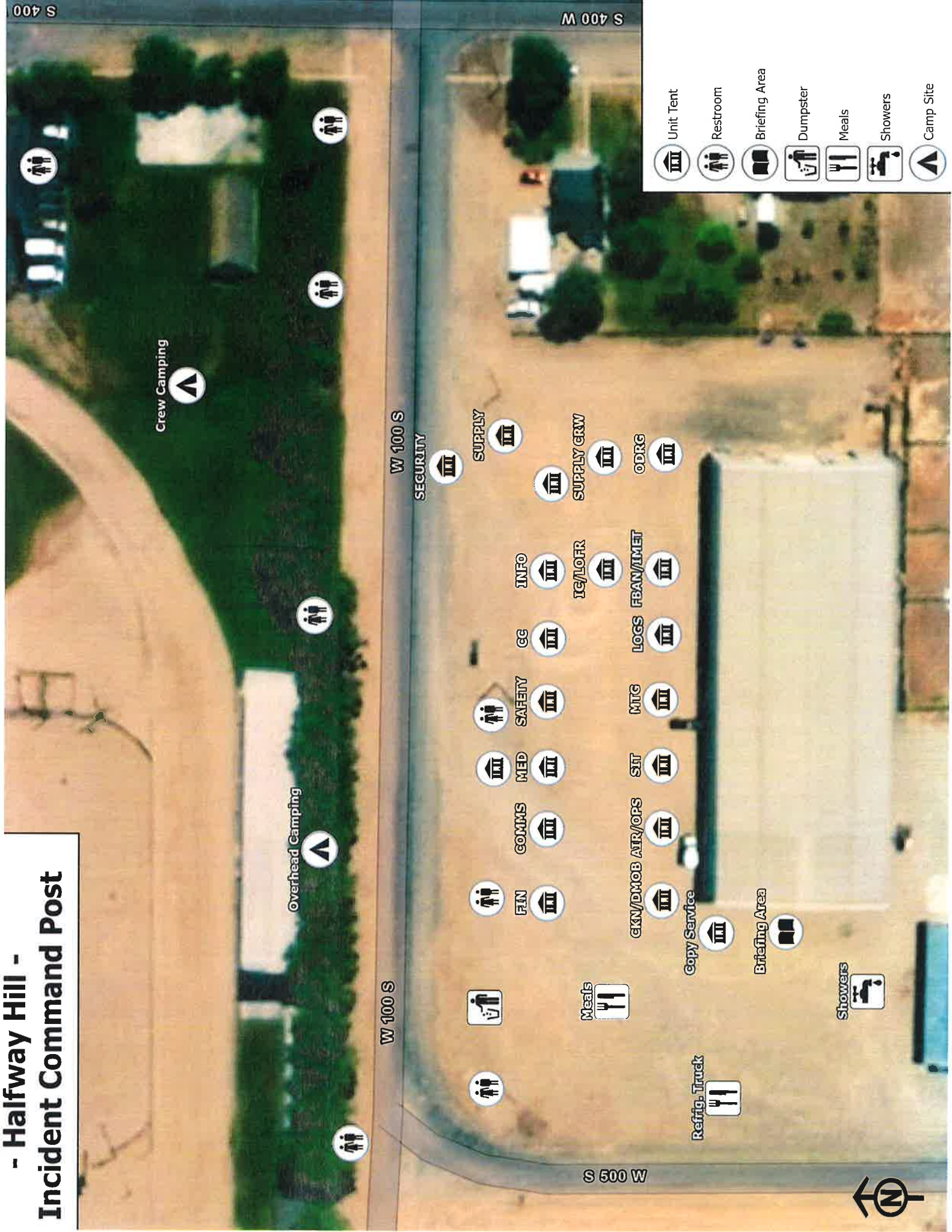
Accountable Property # _____ **All crew level orders will be placed through DIVS**








#	Qty	Item	Shipped	#	Qty	Item	Shipped
1		Meals: Breakfast		30		Folding Tank (1500 gal)	ea
2		Meals: Lunches		31		Pumpkin, 1500 Gal	ea
3		Meals: Dinners		32		Pumpkin (3000 / 6000 Gal)	ea
4		Meals: MRE's, # of cases 12/case)		33		Hose, 1.5" (100'roll)	roll
5		Water, cubie (5gal) ea		34		Hose, 1" (100'roll)	roll
6		Gatorade Case		35		Hose, ¾ (Garden) (50'roll)	roll
7		Water Bottled Case		36		Reducer, 1.5" x 1"	ea
8		Toilet Paper roll		37		Reducer, 1" x ¾"	ea
9		Bath in a bag, (100/box) Box/ea		38		Gated Y, 1.5"	ea
10		Batteries: AA Box (24 ea/box)		39		Gated Y, 1"	ea
11		Batteries: Specify Type AAA / C / D ea		40		Gated Y, ¾"	ea
12		Flagging: Specify Type roll		41		Shut-off Valve, ¾"	ea
13		Fiber Tape roll		42		In-line T, 1.5" x 1"	ea
14		Parachute Cord ft/roll		43		Nozzle, 1.5"	ea
15		Garbage Bags Box/ea		44		Nozzle, 1"	ea
16		20 Man First Aid Kit ea		45		Nozzle,, ¾"	ea
17		Fusee Case		48		Double female, 1" and 1 ½"	ea
18		Shovel ea		49		Double male, 1" and ½"	ea
19		Pulaski ea		50		Inline tees, 1 ½" – 1"	ea
20		Combi ea		General Kits (Order Gas Separately)			
21		Backpack Pump, full ea		51		Chainsaw Kit	ea
22		Backpack Pump, empty ea		52		Sprinkler Kit	ea
23		Drip Torch, Full ea		53		High Pressure Pump Kit, includes pump and 1 quarts 2 cycle oil	ea
24		Drip Torch, Empty ea					
25		Visqueen feet/roll		54		Lightweight Pump Kit, includes 1 quart 2 cycle oil	ea
26		Foam 5 GAL/ea					
27				55		Volume Pump Kit, includes pump and 2 quarts Oil – SAE 10-30 WT	ea
28							
29		½ MILE HOSE PACKAGE # of Packages ()		FUEL			
		Item	Quantity	56		Fuel, Unleaded	Gal
		1 ½" Hose	30	57		Fuel, Premium (chainsaws) 89 octane or better (Prefer Ethanol Free)	Gal
		1" Hose	15	58		Fuel, Diesel	Gal
		¾" Hose	15	59		Fuel, Drip Torch (3:1 mix)	Gal
		1 ½" – 1" Reducer	15				
		1" Nozzle (KK/Forester)	15	Oil			
		1 ½" Y	15	60		Bar Oil	QT/Gal
		1" – ¾" Reducer	15	61		2-cycle oil: Saw	ea
		¾" Y	15	Air Support			
		¾" Nozzle	15	62		Swivel, size: _____	ea
		1" and 1 ½" double female	3	63		Lead line	ea
		1" and ½" double male	3	64		Cargo Net, Size: _____	ea
		Nap Sack - Unavailable in Great Basin	3	65		Slingable Blivet, suppression	ea

TEAM 4 Halfway Hill Contact List:

INFORMATION	435-414-9418	2022.halfwayhill@firenet.gov
FINANCE	208-891-7855	2022.halfwayhill.finance@firenet.gov
DMOB/CHECK-IN RESOURCES	208-891-6158	2022.halfwayhill.resources@firenet.gov
SIT/GIS		2022.halfwayhill.situation@firenet.gov
SUPPLY/ORDERING	208-891-6180	2022.halfwayhill.ordering@firenet.gov
GROUND SUPPORT	208-891-6855	
MEDICAL	208-891-6307	
SAFETY	208-891-7315	
COMMUNICATIONS	208-901-6179	

- Halfway Hill - Incident Command Post



-  Unit Tent
-  Restroom
-  Briefing Area
-  Dumpster
-  Meals
-  Showers
-  Camp Site

Crew Camping

Overhead Camping

W 100 S

W 100 S

S 400 W

S 500 W

SECURITY

SUPPLY

SUPPLY GRW

ODRG

INFO

IC/LOFR

FBAN/IMET

CC

LOGS

SAFETY

MTG

MED

SLIT

COMMS

GKN/DMOB ATR/OPS

FIN

COPY SERVICE

Briefing Area

Showers

Refrig. Truck

Meals



Incident within an Incident (IWI) Plan (Updated 07/14/2022)

On Scene at location of the patient with significant injury

- Upon occurrence of a “**Medical Emergency**” within the incident involving significant injury, complex situation or fatality, the highest qualified person on-scene shall take control of the situation as the **On-Scene Incident Commander** and declare “**Medical Emergency**” on the incident Command Channel.
 - The nearest **Division /Group Supervisor or Operations Chief** will respond to the scene to support IWI or assume command.
 - On-Scene Incident Commander** or **Incident Communications** will take immediate action to clear all radio traffic on the incident Command Channel by broadcasting “**Emergency Traffic Only**”.
 - On-Scene Incident Commander** or **Division /Group Supervisor or Operations Chief** will notify Air Attack of IWI and provide the GPS location.
 - On-Scene Incident Commander** will complete Medical Incident Report (MIR) as soon as possible and relay to **Incident Communications**. *At no time during the incident will the name of the patient(s) be used over the radio.*
 - The nearest **Safety Officer** will respond to the IWI scene and assist the **On-Scene Incident Commander**.
-

ICP: Specific processes for C&G notification for both day and night will be determined upon arrival at each incident.

- Immediately upon notification of a serious incident requiring emergency action the **Communications** unit will make radio and Text Group notifications to the **Incident Commander, Medical Unit Leader, Planning Operations, Safety Officer, Air Operations, Plans Chief, Logistics Chief, Finance Chief, Information Officer and Liaison** who shall respond to the incident communications facility.
- In the absence of the **Incident Commander**, the **Plans Chief** will assume the supervisory role.
- Determine the most appropriate radio operator based on situation and experience
 - The **Medical Unit Leader** normally operates the radio during patient assessment/care portion of the incident.
 - The **RADO's** are responsible for documentation.
- Utilize Incident Within an Incident Prompt Sheet
- Information Officer** will manage external communication. All information released from the incident shall be through the **Information Officer** with the approval of the **Incident Commander**.
- The **Incident Commander** will contact the **Agency Administrator** who will contact appropriate officials of the agency.
 - If the accident involves a fatality, the **Agency Administrator** will be responsible for implementing Agency specific protocols.
- For non-serious (green) incidents the Safety Officers or Medical Unit Leaders will notify the appropriate overhead as necessary.

***Non-medical IWI's (ex. fuel leaks, damaged equipment, road closures, hazardous situations, etc.) that are critical to personnel safety, will be announced over the Command Frequency and on the C and G text group.**

***Non-medical/non-critical IWI's notifications will be sent through the C and G text group.**

MEDICAL PLAN	1. INCIDENT NAME: Halfway Hill	2. DATE PREPARED: 7/22/2022	3. TIME PREPARED: 2000	4. OPERATIONAL PERIOD 7/23/2022 0600-2300			
	5. INCIDENT MEDICAL AID STATIONS						
MEDICAL AID STATIONS		LOCATION			PARAMEDIC		
ICP Med Unit		Jon Slatore (MEDL) (801) 450-4030			YES		
ICP Med Unit		Duane Woolsey (MEDL) (801) 824-3688			YES		
6. TRANSPORTATION							
A. Ambulance Services							
NAME		LOCATION		PHONE		PARAMEDIC	
East Millard Ambulance (AEMT)		Fillmore, Utah		911		No	
Sevier County EMS		Richfield, Utah		(435) 896-6471		No	
AIR AMBULANCE SERVICES							
Life Flight Network		Provo, Utah		911		Yes	
Air Med		Nephi, Utah		911		Yes	
B. Incident Resources							
NAME		LOCATION			PARAMEDIC		
Nicole Leverenz		EMPF/ALS KIT/4X4 Vehicle DIV A/W			Yes		
Cody Anderson		EMPF/ALS KIT/4X4 Vehicle DIV D			Yes		
Beau Retzer		EMPF/ALS KIT/4X4 Vehicle DIV M			Yes		
Stephen Procedo		EMPF/ALS KIT/4X4 Vehicle DIV T			Yes		
Steve Wolfstich		EMPF/ALS KIT/4X4 Vehicle HELIBASE			Yes		
7. HOSPITALS							
NAME	ADDRESS	TRAVEL TIME		PHONE	TRAUMA	HELIPAD	BURN CENTER
Fillmore Community Hospital (IHC)	674 South Highway 99 Fillmore, Utah	AIR 10 min	GRN 15 min	(435) 743- 5591	LVL 4	Yes	No
Sevier Valley Hospital	1000 North Main Street Richfield, Utah	Air 45 min	GRN3 0 min	(435) 893- 4100	LVL 4	Yes	No
Utah Valley Hospital	1034 North 500 West Provo, Utah	Air 45 min	GRN 1.5 hr	(801) 357- 2130	LVL 2	Yes	No
University Hospital	50 North Medical Drive SLC, Utah	Air 1 hr	GRN2 hr	(801) 583- 5000	LVL 1	Yes	Yes
9. PREPARED BY Sean Allen (MEDLt)		10. REVIEWED BY Skeet Houston (SOF2)					

MEDICAL PLAN (ICS 206 WF)

Controlled Unclassified Information//Basic

Medical Incident Report					
FOR A NON-EMERGENCY INCIDENT, WORK THROUGH CHAIN OF COMMAND TO REPORT AND TRANSPORT INJURED PERSONNEL AS NECESSARY.					
FOR A MEDICAL EMERGENCY: IDENTIFY ON SCENE INCIDENT COMMANDER BY NAME AND POSITION AND ANNOUNCE "MEDICAL EMERGENCY" TO INITIATE RESPONSE FROM IMT COMMUNICATIONS/DISPATCH.					
Use the following items to communicate situation to communications/dispatch.					
1. CONTACT COMMUNICATIONS / DISPATCH (Verify correct frequency prior to starting report) <i>Ex: "Communications, Div. Alpha. Stand-by for Emergency Traffic."</i>					
2. INCIDENT STATUS: Provide incident summary (including number of patients) and command structure. <i>Ex: "Communications, I have a Red priority patient, unconscious, struck by a falling tree. Requesting air ambulance to Forest Road 1 at (Lat./Long.) This will be the Trout Meadow Medical, IC is TFLD Jones. EMT Smith is providing medical care."</i>					
Severity of Emergency / Transport Priority	<input type="checkbox"/> RED / PRIORITY 1 Life or limb threatening injury or illness. Evacuation need is IMMEDIATE <i>Ex: Unconscious, difficulty breathing, bleeding severely, 2° – 3° burns more than 4 palm sizes, heat stroke, disoriented.</i>				
<input type="checkbox"/> YELLOW / PRIORITY 2 Serious Injury or illness. Evacuation may be DELAYED if necessary. <i>Ex: Significant trauma, unable to walk, 2° – 3° burns not more than 1-3 palm sizes.</i>					
<input type="checkbox"/> GREEN / PRIORITY 3 Minor Injury or illness. Non-Emergency transport <i>Ex: Sprains, strains, minor heat-related illness.</i>					
Nature of Injury or Illness & Mechanism of Injury			Brief Summary of Injury or Illness <i>(Ex: Unconscious, Struck by Falling Tree)</i>		
Transport Request	Air Ambulance / Short Haul / Hoist Ground Ambulance / Other				
Patient Location	Descriptive Location & Lat./Long. (WGS84)				
Incident Name	Geographic Name + "Medical" <i>(Ex: Trout Meadow Medical)</i>				
On-Scene Incident Commander	Name of on-scene IC of Incident within an Incident <i>(Ex: TFLD Jones)</i>				
Patient Care	Name of Care Provider <i>(Ex: EMT Smith)</i>				
3. INITIAL PATIENT ASSESSMENT: <i>Complete this section for each patient as applicable (start with the most severe patient)</i>			Great Basin Team 4 Medical Unit: VITAL SIGNS REPORT Age _____ Weight _____		
Patient Assessment: See IRPG PAGE 106 or use Vital Signs Report at right			Level of Consciousness: Alert and Oriented to: Person Place Time Event		
Treatment:			Responsive to: Verbal Stimulus Pain Stimulus Unresponsive		
4. TRANSPORT PLAN: Evacuation Location (if different): <i>(Descriptive Location (drop point, intersection, etc.) or Lat./Long.)</i> Patient's ETA to Evacuation Location:			Breathing: Not Normal Difficult/Labored Rate _____		
Helispot / Extraction Site Size and Hazards:			Pulse Rate: Absent Present: _____/minute		
			Skin Color: Normal Pale Bluish Red		
			Skin Moisture: Normal Dry Moist Profuse Sweating		
			Skin/Body Temp: _____°F Normal Hot Cold Cool		
			Pupils: Equal and Reactive Unequal Dilated Constricted		
			Blood Pressure: SYS _____/DIA _____		
			Oxygen Saturation with Pulse Oximeter (SaO2): _____		
			Blood Glucose Level: _____		
5. ADDITIONAL RESOURCES / EQUIPMENT NEEDS: <i>Example: Paramedic/EMT, Crews, Immobilization Devices, AED, Oxygen, Trauma Bag, IV/Fluid(s), Splints, Rope rescue, Wheeled litter, HAZMAT, Extrication</i>					
6. COMMUNICATIONS: Identify State Air/Ground EMS Frequencies and Hospital Contacts as applicable					
Function	Channel Name/Number	Receive (RX)	Tone/NAC *	Transmit (TX)	Tone/NAC *
COMMAND					
AIR-TO-GRND					
TACTICAL					
7. CONTINGENCY: Considerations: <i>If primary options fail, what actions can be implemented in conjunction with primary evacuation method? Be thinking ahead.</i>					
8. ADDITIONAL INFORMATION: <i>Updates/Changes, etc.</i>					
REMEMBER: Confirm ETAs of resources ordered. Act according to your level of training. Be Alert. Keep Calm. Think Clearly. Act Decisively.					

