

# Halfway Hill

Central Utah Type 3 Team  
Bart Madsen, IC



**SUNDAY JULY 24 , 2022**



Finance Forms, IAP, Maps

**DAY: 0600-2000**

**PNPT4U (1522)**

**UT-SCS-220216**

## INCIDENT OBJECTIVES (ICS 202)

<b>1. Incident Name:</b>		<b>2. Operational Period:</b> DAY	
HALFWAY HILL		Date/Time From: 07/24/2022 0600      SUN	Date/Time To: 07/24/2022 2000      SUN
<b>3. Objective(s):</b>			
Prevent fire spread to private property and minimize impacts to power, telecommunications, culinary water, irrigation, and recreational infrastructure.			
Employ and implement high probability of success strategies and tactics that are commensurate with the inherent risks in the wildland fire environment.			
Coordinate with resource advisor(s) to minimize negative impacts from fire suppression actions while documenting and planning for future suppression rehabilitation.			
Continuously implement and update near and long-term strategic plans with intent to keep final perimeter as small as possible.			
Provide fire information thru public interactions, web platforms, and social media products to public, stakeholders, and agencies to maintain and enhance community relationships throughout the duration of the incident.			
Continually implement and enforce COVID-19 mitigation strategies to lessen the probability of spread through fire personnel and the public.			
<b>4. Operational Period Command Emphasis:</b>			
Transition days can be confusing; make sure you and your crew know the new structure.			
<b>General Situational Awareness:</b>			
Maintain balanced momentum regardless of task intensity or composition.			
<b>5. Site Safety Plan Required?</b> Yes <input type="checkbox"/> No <input checked="" type="checkbox"/>			
<b>Approved Site Safety Plan(s) Located</b>			
<b>6. Incident Action Plan</b> (the items checked below are included in this Incident Action Plan):			
<input checked="" type="checkbox"/> ICS 202	<input type="checkbox"/> ICS 207	Other Attachments:	
<input checked="" type="checkbox"/> ICS 203	<input checked="" type="checkbox"/> ICS 208	<input type="checkbox"/> _____	
<input checked="" type="checkbox"/> ICS 204	<input checked="" type="checkbox"/> ICS 220	<input type="checkbox"/> _____	
<input checked="" type="checkbox"/> ICS 205	<input type="checkbox"/> Map/Chart	<input type="checkbox"/> _____	
<input type="checkbox"/> ICS 205A	<input checked="" type="checkbox"/> Weather Forecast/Tides/Currents	<input type="checkbox"/> _____	
<input checked="" type="checkbox"/> ICS 206			
<b>7. Prepared by:</b> RICH JAROS	<b>Position/Title:</b> PSC3	<b>Signature:</b>	
<b>8. Approved by Incident Commander:</b>	<b>Name:</b> BART MADSEN	<b>Signature:</b>	
<b>ICS 202</b>	<b>IAP Page</b>	<b>Date/Time:</b> 07/23/2022 2000	

## ORGANIZATION ASSIGNMENT LIST (ICS 203)

<b>1. Incident Name:</b>		<b>2. Operational Period: DAY</b>	
HALFWAY HILL		Date/Time From: 07/24/2022 0600      SUN	Date/Time To: 07/24/2022 2000      SUN
<b>3. Incident Commander(s) and Command Staff:</b>			
IC/UC	MADSEN, BART 435-612-3153 SCHENCK, NICK 435-558-0349 (T)		
SAFETY OFFICER	BECKSTRAND, JAY 435-979-6142		
INFORMATION OFFICER	BRADSHAW, KOURTNEY 435-421-1595		
<b>4. Agency/Organization Representative(s):</b>			
<b>Agency/Organization</b>	<b>Name</b>		
USFS	MONROE, BRIAN WHITMER, JARED (T)		
UT - DNR	TORGERSON JASON		
BLM	GATES, MICHAEL		
USFS - READ			
<b>5. Planning Section:</b>			
CHIEF	JAROS, RICH 435-691-1419		
GIS SPECIALIST			
INCIDENT METEOROLOGIST	SEAMAN, MIKE		
<b>6. Logistics Section:</b>			
CHIEF	CHAPPELL, GLEN 435-979-8341 MCCULLIN, RYAN 435-201-9746 (T)		
MEDICAL UNIT	NORTHRUP, TYLA 435-979-5285		
<b>7. Operations Section:</b>			
OPS SECTION CHIEF	CORNWALL, KELLY 435-691-6001 THATCHER, QUINCY 435-558-0680 (T)		
DIVISION/GROUP	A/D/W	CURLEY, JASON 435-253-0165 SHIELDS, RUSSELL 435-406-4367 (T)	
DIVISION/GROUP	M/T	IVIE, RUSS 435-201-2958 PFEIFFER, LOGAN (T)	
<b>8. Finance/Administration Section:</b>			
CHIEF	RANGLES, TRINA 435-201-2958		
DEPUTY	WILSON, FRAN 435-231-5403		
<b>9. Prepared By:</b>	<b>Name:</b> RICH JAROS	<b>Position/Title:</b> PSC3	<b>Signature:</b>
ICS 203	IAP Page	<b>Date/Time:</b> 07/23/2022 2100	



# Halfway Hill Fire Weather FORECAST

IMET contact - (816) 589-0168

FORECAST NO: 14  
PREDICTION FOR: SUNDAY & SUN Night  
SHIFT DATE: July 24, 2022  
FORECAST ISSUED: 07/23/2022 at 2000

NAME OF FIRE: Halfway Hill  
UNIT: UT-SCS-220216  
SIGNED: Mike Seaman  
Incident Meteorologist (Mike Seaman)

**WEATHER DISCUSSION:** Moisture will spread northward across the area today bringing a cooling trend, along with an upward trend in RH, and improved overnight recovery. Scattered showers can be expected throughout the day, while daytime heating allowing for a few afternoon thunderstorms capable of producing gusty erratic winds to 40 mph, along with rainfall around 0.10. Winds will remain from the west-southwest and trend lighter today, but may become dominated by outflow winds during the afternoon and early evening hours. Moisture will continue to increase through Tuesday, bringing a good chance for showers and thunderstorms capable of producing wetting rains.

**TODAY:           \*\* GUSTY ERRATIC OUTFLOW WINDS TO 40 MPH AFTER 1300 \*\***

**WEATHER:** Mostly cloudy with scattered showers through the day. Isolated thunderstorms after 1300.

**MAX TEMP:**       **6500 ft:** 92-95° F           **8000 ft:** 80-83° F           **Trend:** Down 3-5° F

**MIN RH:**           **6500 ft:** 19-22%           **8000 ft:** 23-26%           **Trend:** Up 3-4%

**20 FT WINDS (mph):**

Upper Exposed Ridges: West-southwest 4-7 w/gusts 8-12 increasing to 6-9 w/gusts 14-19 after 1200.

Lower Slopes & Canyons: Slope/drainage 3-8 becoming west-southwest 4-7 w/gusts 10-16 after 1300.

**MORNING INVERSION:** Below 7500 ft early, mixing out by 1000           **HAINES INDEX:** 4 (Low)

**LAL:** 1 until 1200, then 2           **PCPN/STORM CHC:** 20% until 1200, then 40%           **CWR:** 20%

**TONIGHT:           \*\* GUSTY ERRATIC OUTFLOW WINDS POSSIBLE UNTIL 2200 \*\***

**WEATHER:** Mostly cloudy with isolated showers and thunderstorms until 2200, then partly cloudy.

**MIN TEMP:**       **6500 ft:** 62-65° F           **8000 ft:** 58-61° F           **Trend:** Down 5-6° F

**MAX RH:**           **6500 ft:** 46-51%           **8500 ft:** 58-65%           **Trend:** Up 10-15%

**20 FT WINDS (mph):**

Upper Exposed Ridges: Northwest 4-9 with gusts 10-14 becoming southeast 3-8 after 2400.

Lower Slopes & Canyons: West-southwest 4-9 early becoming slope/drainage 4-9 after 2000.

**INVERSION:** Developing below 7000 feet after 2100.           **HAINES INDEX:** 4 (Low)

**LAL:** 2 until 2200, then 1           **PCPN/STORM CHC:** 20% until 2200, then 10%           **CWR:** 5%

**OUTLOOK FOR MON:**

**WEATHER:** Partly cloudy until 1100, then mostly cloudy. Scattered showers and thunderstorms after 1200.

**MAX TEMP:** 6500 ft: 93-96° F   8000 ft: 81-84° F   **MIN RH:** 6500 ft: 17-20%   8000 ft: 23-26%

**20 FT EXPOSED WIND (mph):** Slope/drainage 3-8 becoming West-northwest 5-8 w/gusts 12-16 after 1200.

**HAINES INDEX:** 4 (Low)           **LAL:** 4           **PCPN/STORM CHC:** 50%           **CWR:** 30%

**EXTENDED FORECAST (6500 ft): Showers/thunderstorms Tuesday, then drying trend begins Wednesday.**

**TUE:** 60% Chance T-storms   **Low/High Temp:** 63°/89°   **Max/Min RH:** 60/26%   **Aftn Wind:** W 5-8 G 12-16 mph

**WED:** 30% Chance T-storms   **Low/High Temp:** 62°/92°   **Max/Min RH:** 64/21%   **Aftn Wind:** NW 6-9 G 14-18 mph

**THU:** Mostly sunny           **Low/High Temp:** 62°/93°   **Max/Min RH:** 51/18%   **Aftn Wind:** NW 6-9 G 14-18 mph

**YESTERDAY'S WEATHER (SAT): Remaining hot with a mixture of clouds and sun through the day.**

**D1 RAWS (Div A/D Brk) – 6011 ft:**   **Low/High Temp:** 73/96°   **Max/Min RH:** 31/13%   **Aftn Wind:** WNW 6-9 G 14-17 mph   **RAIN:** 0.00

**IRAWS 31 (DIV D) – 7737 ft:**       **Low/High Temp:** 69/87°   **Max/Min RH:** 33/17%   **Aftn Wind:** W 5-10 G 16-20 mph   **RAIN:** 0.00

**IRAWS 32 (DIV M) – 9139 ft:**       **Low/High Temp:** 62/84°   **Max/Min RH:** 43/22%   **Aftn Wind:** NW 2-4 G 10-13 mph   **RAIN:** 0.00

You can email your line observations to: [mike.seaman@noaa.gov](mailto:mike.seaman@noaa.gov) ...Thanks!

# FIRE BEHAVIOR FORECAST

FORECAST NUMBER: 15	TYPE OF FIRE: Wildfire
FIRE NAME: Halfway Hill	OPERATIONAL PERIOD: 7/24/22 0600-2000
DATE ISSUED: 7/23/22	TIME ISSUED: 1900
UNIT: UT-SCS-220216	SIGNED:  Typed/printed: Matt Filbert FBAN / Nick Jeros FBAN t

## INPUTS

### WEATHER SUMMARY:

Moisture will spread northward across the area today bringing a cooling trend, along with an upward trend in RH. Scattered showers can be expected throughout the day, while daytime heating allowing for a few afternoon thunderstorms capable of producing **gusty erratic winds to 40 mph after 1300**. 80-95° with min RH of 19-26%. Winds will be generally slope driven 3-8 becoming west-southwest 4-7 w/gusts 10-16 after 1300. LAL 1 until 1200, then 2. Haines 4.

\*\*\*See Attached Weather Forecast\*\*\*

## OUTPUTS

### FIRE BEHAVIOR

#### GENERAL:

Fuel conditions vary widely throughout the fire area with grass/shrub in the lower areas transitioning to shrub/juniper in the mid-levels to timber understory and sage/aspen at the highest elevations. The grass/shrub and shrub/juniper fuels respond quickly to the winds as the primary driver of fire behavior with runs occurring in winds 15+ mph since fuel moistures are low but not critical levels. The timber understory component in mixed conifer stands rely on the dried out 1000hr fuels and litter/duff conditions to carry fire with creeping, smoldering and spotting. The sage and aspen stands are not available to burn currently since live fuel moistures remain very high. The wildcard will be a random spot from a tree torch in an exposed area landing in receptive fuels that are aligned with wind and slope.

#### Fuels and predicted fire behavior:

Grass and grass/shrub fuel types. Expect 25-35 chains/hr. ROS with FL of 5-7 feet.  
Oak/pinyon-juniper mix with some timber. Expect 60-90 chains/hr. ROS with FL of 18-20 feet.  
Timber litter/shrub understory. Expect ROS in the 12-17 chains/hr. range and FL of 8-12 feet.

**Rates of spread and flame lengths are based on worst case scenarios where wind gusts exceed 20 mph.**

Today's spotting distance is ~.8 mile with a probability of ignition of 70%.

#### SPECIFIC:

Division A/W: Expect smoldering and creeping fire behavior with single tree/group torching. Interior green islands will continue to burnout the oak/brush fuels and spotting issues are a concern as the grass fuels will become available to burn. Reburn potential exists if winds align with heat and continuous fuels.

Division M/T: Expect smoldering and creeping fire behavior with isolated torching. Expect to see interior smokes with reburn potential in the interior green pockets as fuels are exposed the sun. Uncontained portions of the division have been quiet for several days as crews checked up some areas of concern. The gusty erratic winds forecast make it still possible for a tree to torch near the bottom of the canyon in Chalk and Choke Cherry creeks and throw a spot across the creek resulting in additional fire spread.

**AIR OPERATIONS:** By early afternoon, gusty outflow winds near thunderstorms could have impacts to air operations.

## SAFETY

*The National Fire Danger Rating System PocketCard is a tool for field personnel to locally track fire potential throughout the season. It is based on historical weather and fire occurrence for a localized area. The PocketCard displays a general assessment of the fire potential and identifies combinations of local weather and fuel conditions that might contribute to severe fire behavior. Have you reviewed yours recently? This incident could last a while so continuously re-evaluate the situation.*



## Division/Group Assignment List (ICS 204 WF)

Controlled Unclassified Information//Basic

<b>1. Incident Name:</b>				<b>3.</b>			
HALFWAY HILL				<b>Branch:</b>		<b>Division/Group</b>	
<b>2. Operational Period: DAY</b>							
Date/Time From: 07/24/2022 0600      SUN		Date/Time To: 07/24/2022 2000      SUN		A/D/W			
<b>4. Operations Personnel</b>							
<b>OPS</b>		CORNWALL, KELLY		<b>DIVISION/GROUP SUPERVISOR</b>		CURLEY, JASON SHIELDS, RUSSELL (T)	
<b>5. Resources Assigned this Period</b>							
Strike Team / Task Force / Resource Designator		LWD	Leader	Number Persons	Drop Off PT./Time	Pick Up PT./Time	
C-9 CRW1 LAKEVIEW IHC		07/25	BLOFSKY, ALLAN M	22	ICP/0700	ICP/2000	
C-19 CRW1 LOGAN IHC		07/30	BAKER, RYAN C	23	ICP/0600	ICP/2000	
E-115 ENG3 UT-WDD - ENG 5320*			SPENCE, NATE	4	ICP/0600	ICP/2000	
E-116 ENG3 UT-WDD - ENG 5322 *			STEVENS, ROYCE	4	ICP/0600	ICP/2000	
E-135 ENG6 NORTHERN UTAH FIRE		08/05	GORDON, TONY	3	ICP/0600	ICP/2000	
E-136 ENG6 BRIGHAM CITY FD - BR21		08/05	DESANDRE, ANTHONY R	2	ICP/0600	ICP/2000	
E-2 WTT2 UT-CLD - WT4910		07/30	JULANDER, DAMEON	1	ICP/0600	ICP/2000	
E-132 EXC2 CUTTING EDGE		08/04	RIGGS, TOM	2	ICP/0600	ICP/2000	
O-59 TFLD MILLER, KEN		07/25		1	ICP/0600	ICP/2000	
O-57 TFLD DAY, DAVID R		07/25		1	ICP/0600	ICP/2000	
O-43 EMPF ANDERSON, CODY SCOTT		07/24		1	ICP/0600	ICP/2000	
O-47 EMPF LEVERENZ, NICOLE		07/25		1	ICP/0600	ICP/2000	
<b>6. Control Operations/Work Assignments:</b>							
<p><b>DIV A</b></p> <p>Secure and mop-up the along the line in the area of the burnout operation to the extent necessary to prevent any potential flare ups or spots that could threaten the line. Continue to maintain careful watch for any potential threats to the control line from the A/W break to the A/D break.</p> <p>Prepare for any backhaul and demobilization of unneeded resources and supplies.</p> <p>Successful completion of this would further secure the containment lines, minimizing the potential fire impacts to the Virginia Hills subdivision, and surrounding residences.</p> <p>Coordinate with the READ on suppression repair needs utilizing the excavator.</p>							
<b>8. Division/Group Communication Summary</b>							
Function	Channel	RX Frequency N/W	RX Tone/NAC	TX Frequency N/W	TX Tone/NAC	Mode	
COMMAND							
TACTICAL							
LOGISTICS							
AIR TO GROUND							
<b>9. Prepared By (Resource Unit Leader)</b>			<b>Approved By (Planning Section Chief)</b>			<b>Date</b>	<b>Time</b>
			RICH JAROS			07/23/2022	1800

## Division/Group Assignment List (ICS 204 WF)

Controlled Unclassified Information//Basic

<b>1. Incident Name:</b>				<b>3.</b>			
HALFWAY HILL				<b>Branch:</b>		<b>Division/Group</b>	
<b>2. Operational Period:</b>							
<b>DAY</b>				<b>A/D/W</b>			
Date/Time From: 07/24/2022 0600		SUN		Date/Time To: 07/24/2022 2000		SUN	
<b>4. Operations Personnel</b>							
<b>OPS</b>		CORNWALL, KELLY		<b>DIVISION/GROUP SUPERVISOR</b>		CURLEY, JASON SHIELDS, RUSSELL (T)	
<b>6. Control Operations/Work Assignments:</b>							
<p><b>DIV D</b> Utilize the tactics that will provide the highest probability of success in securing the fires edge around Horse Hollow, further minimizing fire growth and potential impacts to the water ways during heavy rain events. Work to establish better depth off the indirect handline, in coordination with the aerial ignition operation. Successfully securing this line will minimize the potential for future fire spread to the north into the North Fork of Chalk Creek drainage, and west towards the community.</p> <p><b>DIV W</b> Continue to regularly check the line through the most appropriate method to ensure nothing will impact the containment along the control lines. Needs: None</p>							
<b>7. Special Instructions:</b>							
<p><b>DIV A</b> Initial Attack resources designated by * Visit weed wash station frequently, especially if you are changing working locations on the fire. Be aware of cattle and permittees in the fire area. Notify DIVS of any cattle around active fire. DIVS report locations of cattle to the LOFR. Coordinate with the READ or Archeologist before any new dozer line is established. Water tenders track how many tanks are filled from the hydrant, and turn in that number to the DIVS. Areas of resource concern that need to be avoided are marked with white flagging.</p> <p><b>DIV D</b> Initial Attack resources designated by * Visit weed wash station frequently, especially if you are changing working locations on the fire. Be aware of cows and local ranchers in the fire area. Notify DIVS of any cattle around active fire, or within the indirect line perimeter. DIVS report locations of cattle to the LOFR. Coordinate with the READ or Archeologist before any new dozer line is established. Continue to update progress of completed road prep into Field Maps.</p> <p><b>DIV W</b> Initial Attack resources designated by * Visit weed wash station frequently, especially if you are changing working locations on the fire.</p>							
<b>8. Division/Group Communication Summary</b>							
Function	Channel	RX Frequency N/W	RX Tone/NAC	TX Frequency N/W	TX Tone/NAC	Mode	
COMMAND							
TACTICAL							
LOGISTICS							
AIR TO GROUND							
<b>9. Prepared By (Resource Unit Leader)</b>			<b>Approved By (Planning Section Chief)</b>			<b>Date</b>	<b>Time</b>
			RICH JAROS			07/23/2022	1800

**Division/Group Assignment List (ICS 204 WF)**  
**Controlled Unclassified Information//Basic**

<b>1. Incident Name:</b>			<b>3.</b>			
HALFWAY HILL			<b>Branch:</b>		<b>Division/Group</b>	
<b>2. Operational Period:</b>			M/T			
<b>DAY</b>						
Date/Time From: 07/24/2022 0600      SUN		Date/Time To: 07/24/2022 2000      SUN				
<b>4. Operations Personnel</b>						
<b>OPS</b>		CORNWALL, KELLY		<b>DIVISION/GROUP SUPERVISOR</b>		IVIE, RUSS PFEIFFER, LOGAN (T)
<b>5. Resources Assigned this Period</b>						
<b>Strike Team / Task Force / Resource Designator</b>		<b>LWD</b>	<b>Leader</b>	<b>Number Persons</b>	<b>Drop Off PT./Time</b>	<b>Pick Up PT./Time</b>
O-110 WFM2 MODULE EAGLE LAKE		08/04	BORDEN, BRANDON	8	ICP/0700	ICP/2000
E-110 ENG6 SCHOLL FIRE & FUELS MGMT		07/27	HAYS, BEN	3	ICP/0700	ICP/2000
O-46 EMPF RETZER, BEAU		07/25		1	ICP/0700	ICP/2000
O-92 EMPF PROCEDO, STEPHEN VINSON (T)		07/27		1	ICP/0700	ICP/2000
<b>6. Control Operations/Work Assignments:</b>						
Continue to check the hand-line along Chalk Creek Road near Copley's Canyon trail to the Pistol Rock Rec Site.						
Continue to check the fires edge along Chalk Creek to the Cedar Springs and Nephi Canyon confluence.						
Prepare for any backhaul and demobilization of unneeded resources and supplies.						
Needs: None						
<b>7. Special Instructions:</b>						
Phone number to call in for morning briefing: 929-336-2435, Conf. ID: 284 682 563#						
Visit weed wash station frequently, especially if you are changing working locations on the fire.						
Be aware of cattle and permittees in the fire area. Notify DIVS of any cattle around active fire. DIVS report locations of cattle to the LOFR.						
Areas of resource concern that need to be avoided are marked with white flagging.						
<b>8. Division/Group Communication Summary</b>						
<b>Function</b>	<b>Channel</b>	<b>RX Frequency N/W</b>	<b>RX Tone/NAC</b>	<b>TX Frequency N/W</b>	<b>TX Tone/NAC</b>	<b>Mode</b>
COMMAND						
TACTICAL						
LOGISTICS						
AIR TO GROUND						
<b>9. Prepared By (Resource Unit Leader)</b>			<b>Approved By (Planning Section Chief)</b>		<b>Date</b>	<b>Time</b>
			RICH JAROS		07/23/2022	1800



# INCIDENT RADIO COMMUNICATIONS PLAN (ICS 205)

## Controlled Unclassified Information//Basic

<b>1. Incident Name:</b> HALFWAY HILL	<b>2. Date/Time Prepared:</b> Date: 07/23/2022 Time: 1700	<b>3. Operational Period:</b> DAY
	<b>Date/Time From:</b> 07/24/2022 0600	<b>Date/Time To:</b> 07/24/2022 2000

4. Basic Radio Channel Use:												
Zone Group	Ch #	Function	Channel Name/Trunked Radio System Talkgroup	Assignment	RX Freq	RX Tone/NAC	TX Freq	TX Tone/NAC	Mode (A,D, or M)	Remarks		
	1	TACTICAL	TAC1	DIV A/D/W	168.0500	123.0	168.0500	123.0	A	DIV A/D/W		
	2	TACTICAL	TAC 2	UNASSIGNED	168.2000	123.0	168.2000	123.0	A	UNASSIGNED		
	3	TACTICAL	TAC 3	DIV M/T	168.6000	123.0	168.6000	123.0	A	DIV M/T		
	4	TACTICAL	TAC 4	UNASSIGNED	166.7250	123.0	166.7250	123.0	A	UNASSIGNED		
	5	TACTICAL	TAC 5	UNASSIGNED	166.7750	123.0	166.7750	123.0	A	UNASSIGNED		
	6	TACTICAL	TAC 6	UNASSIGNED	168.2500	123.0	168.2500	123.0	A	UNASSIGNED		
	7	COMMAND	CMD 7	CMD	170.4500	123.0	168.1000	123.0	A	WHITE PINE PEAK		
	8	COMMAND	CMD 8	CMD	169.5375	123.0	164.7125	123.0	A	DEVILS KITCHEN		
	10	COMMAND	BLM WHITE PINE	CMD	172.6250	0.0	164.9500	103.5	A	BLM WHITE PINE REPEATER		
	11	COMMAND	NOTCH	CMD	172.4375	0.0	166.0000	167.9	A	BLM NOTCH PEAK REPEATER		
	12	COMMAND	FS DELTA	CMD	172.2500	0.0	165.0125	123.0	A	FS DELTA REPEATER		
	13	AIR TO GROUND	A/G PRI	AIR	168.4000	0.0	168.4000	0.0	A	AIR TO GROUND PRIMARY		
	14	AIR TO GROUND	A/G 18	AIR	168.0125	0.0	168.0125	0.0	A	FISHLAKE AIR TO GROUND		
	15	AIR TO GROUND	VMED 28	AIR	155.3400	0.0	155.3400	156.7	A	MEDEVAC		
	16	AIR GUARD	AIRGUARD	EMERGENCY	168.6250	0.0	168.6250	110.9	A	AIR GUARD		

**5. Special Instructions:**

<b>6. Prepared By</b> (Communications Unit Leader)	Name: JOSH CORNELL
	Signature:
<b>ICS 205</b>	IAP Page
	Date/Time: 07/23/2022 1700

<b>1. INCIDENT NAME</b>	<b>2. OPS PERIOD DATE</b>	<b>START TIME</b>	<b>END TIME</b>	<b>SUNRISE</b>	<b>SUNSET TIME</b>
Halfway Hill Fire	07/24/2022	0600	2000	0622	2046

**3. REMARKS (Safety Notes, Hazards)**  
 ICP Operational Briefing 0600/ Helibase Briefing 0800  
 Call in potential helispot lat/longs to helibase for approval/improvement  
 All medivacs will be coordinated through Halfway Hill Communications  
 Request aviation needs through Air Attack if over fire or through Fillmore Helibase  
 Be aware of powerlines in canyon corridors and near dip sites  
 Ensure lines are clear before initiating drop sequence  
 Report # dips by dip site to helibase at the end of each fuel cycle

**4. READY ALERT AIRCRAFT**  
 Initial Attack:  
 7PJ, 1CK  
 Medivac:  
 7PJ

**5. AIRSPACE INFORMATION**  
 TFR Notam FDC 2/2724  
 Polygon to 13,000' MSL  
 From: 38°50'37"N 112°23'24"W  
 To: 38°58'53"N 112°19'23"W  
 To: 38°58'30"N 112°05'39"W  
 To: 38°50'18"N 112°07'27"W  
 Contact Frequency: 133.9750

<b>6. PERSONNEL</b>	<b>NAME</b>	<b>PHONE #</b>	<b>7. FREQUENCIES</b>	<b>VHF-AM</b>	<b>VHF-FM</b>
Air Operations POC/Helicopter Manager N407PJ	Kim Soule	(801) 494-4617	A/A Fixed Wing (TFR)	133.9750	
Helicopter Manager N611CK	Kylie Bronson	(435) 452-1559	A/G Primary		168.4000
Aircraft Desk	Richfield Fire Center	(435) 896-8404	Medivac Air Ambulance VMED 28		155.3400 156.7 Tx Tone
Richfield Airport Manager	Adam Robinson	(435) 896-9413	Local IA Air to Ground A/G 18 A/G 21		168.0125 168.1500

**8. FIXED WING AIRCRAFT**

<b>FAA #</b>	<b>RO #</b>	<b>TY</b>	<b>MAKE/MODEL</b>	<b>BASE</b>	<b>START</b>	<b>AVAILABLE</b>	<b>PERSONNEL</b>	<b>REMARKS</b>

**9. UNMANNED AIRCRAFT SYSTEMS (UAS)**

<b>CALL SIGN</b>	<b>TYPE</b>	<b>MAKE/MODEL</b>	<b>PERSONNEL</b>	<b>REMARKS</b>
Unmanned R31	3	DJI M600	Milton Truong (541) 274-9134 Eric Ogden (541) 880-8554	Lakeview IHC, UAS IR and PSD capable

10. HELICOPTERS		Codes: C=Cargo P=Passengers B=Bucket SN=Snorkel R=Rappel SH=Short Haul S= Step E=Extraction M=Medical Evacuation H=Hoist EU=Exclusive Use HT=Helitorch											
FAA N#	RO #	TY	MAKE/ MODEL	BASE	AVAIL	REMARKS	FAA N#	RO #	TY	MAKE/ MODEL	BASE	AVAIL	REMARKS
N407PJ	A-	3	Bell 407	Richfield Airport	0800	C,P,B,M,EU,HT	N611CK	A-14	1	Sikorsky SH-3H	Richfield Airport	0800	B,EU

11. PLANNED MISSIONS				
MISSION	START	FROM LOCATION	TO LOCATION	REMARKS
Aerial Supervision	TBD	TBD	Fire	Order through Richfield if needed
Recon	TBD	Richfield Airport	Fire	As requested
Bucket Support	TBD	Richfield Airport	Fire	As requested
Logistical Load Delivery	TBD	Richfield Airport	Fire	As requested
Initial Attack Support	TBD	Richfield Airport	Fire	As requested
Aerial Ignition (UAS PSD)	TBD	Fire	TBD	As requested & prioritized by Ops
IR/Mapping (UAS)	TBD	Fire	TBD	As requested & prioritized by Ops

12. AVIATION LOCATIONS						
LOCATION	APPROVED	LATITUDE X LONGITUDE	LOCATION	APPROVED	LATITUDE X LONGITUDE	
Richfield Airport (RIF)		38°44.643' N x 112°05.579' W	H-20 (Div T)	Type 2	38°54.929' N x 112°08.605' W	
H-2 (Div W)	Type 2	38°53.768' N x 112°08.605' W	H-25 (Div T)	Type 2	38°56.073' N x 112°08.010' W	
H-5 (Div W)	Type 2	38°53.170' N x 112°17.131' W	H-30 (Div M)	Type 2	38°55.749' N x 112°09.784' W	
H-7 (Div W)	Type 2	38°52.430' N x 112°15.181' W	H-35 (Div M)	Type 3	38°56.607' N x 112°11.345' W	
H-9 (Div W)	Type 2	38°51.610' N x 112°13.631' W	H-37 (Div M)	Type 3	38°56.852' N x 112°11.955' W	
H-10 (Div T)	Type 2	38°51.188' N x 112°13.690' W	H-39 (Div M)	Type 3	38°55.635' N x 112°13.802' W	
H-12 (Div T)	Type 2	38°52.409' N x 112°11.398' W	H-40 (Div D)	Type 3	38°56.879' N x 112°14.389' W	
H-15 (Div T)	Type 2	38°53.428' N x 112°10.101' W	H-41 (Div D)	Type 3	38°55.552' N x 112°14.413' W	
Cargo Site/Heli-torch Base	Type 2	38°57.491' N x 112°17.940' W	H-42 (Div D)	Type 2	38°55.363' N x 112°14.792' W	
			H-45 (Div A)	Type 2	38°55.834' N x 112°16.220' W	

**Incident:**

**Halfway Hill Fire**

**Date:**

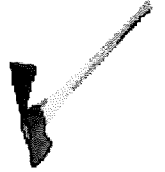
**7/24/2022**

**Operational Period:**

**Day Shift**



## **SAFETY MESSAGE**



*Fire fighter safety comes first on every fire, every time*

### **MAJOR 215 A HAZARDS AND RISKS**

- |  |  |
|--|--|
| <ul style="list-style-type: none"> <li>• Heat related illnesses</li> <li>• Excessive Heat and Strong Erratic Winds</li> <li>• Driving rough steep winding roads</li> <li>• UTV/ATV use</li> <li>• Heavy Equipment</li> <li>• Wildlife (Rattle Snakes/Bees/Ticks etc....)</li> <li>• Extremely Dry Fuels, Erratic fire behavior</li> <li>• Short/Long range spotting</li> </ul> | <ul style="list-style-type: none"> <li>• Air Operations</li> <li>• Rolling material on steep slopes</li> <li>• Steep rocky, rough terrain -falls/slips</li> <li>• COVID-Physical Distancing</li> <li>• Food Consumption-eat within two hours</li> <li>• Hazard Trees and Chain saw Operations</li> <li>• Personal Hygiene- Sanitize twice daily</li> </ul> |
|--|--|

#### **Transition**

Transitions are always a time when the hair on the back of your neck should be standing up. Ensure you keep your head on straight and stay focused. Prior to engaging make sure you and your crew knows the new command structure. Continue to maintain good communications with all of your personnel. Remain flexible, look out for each other and continue to adhere to Lookouts; Communication; Escape Routes; Safety Zones.

#### **Medical Emergencies and Transport**

- Review and brief all personnel on the new Medical Plan.
- Know where the closest medical personnel and equipment are.
- Ask yourself; how long will it take to stabilize and package an injured person?
- Ask yourself; how long will it take to move them to the closest medevac site or care facility?
- Ask yourself; how many people will it take to carry them out, are they available?
- Ask yourself; is the risk worth the gain?

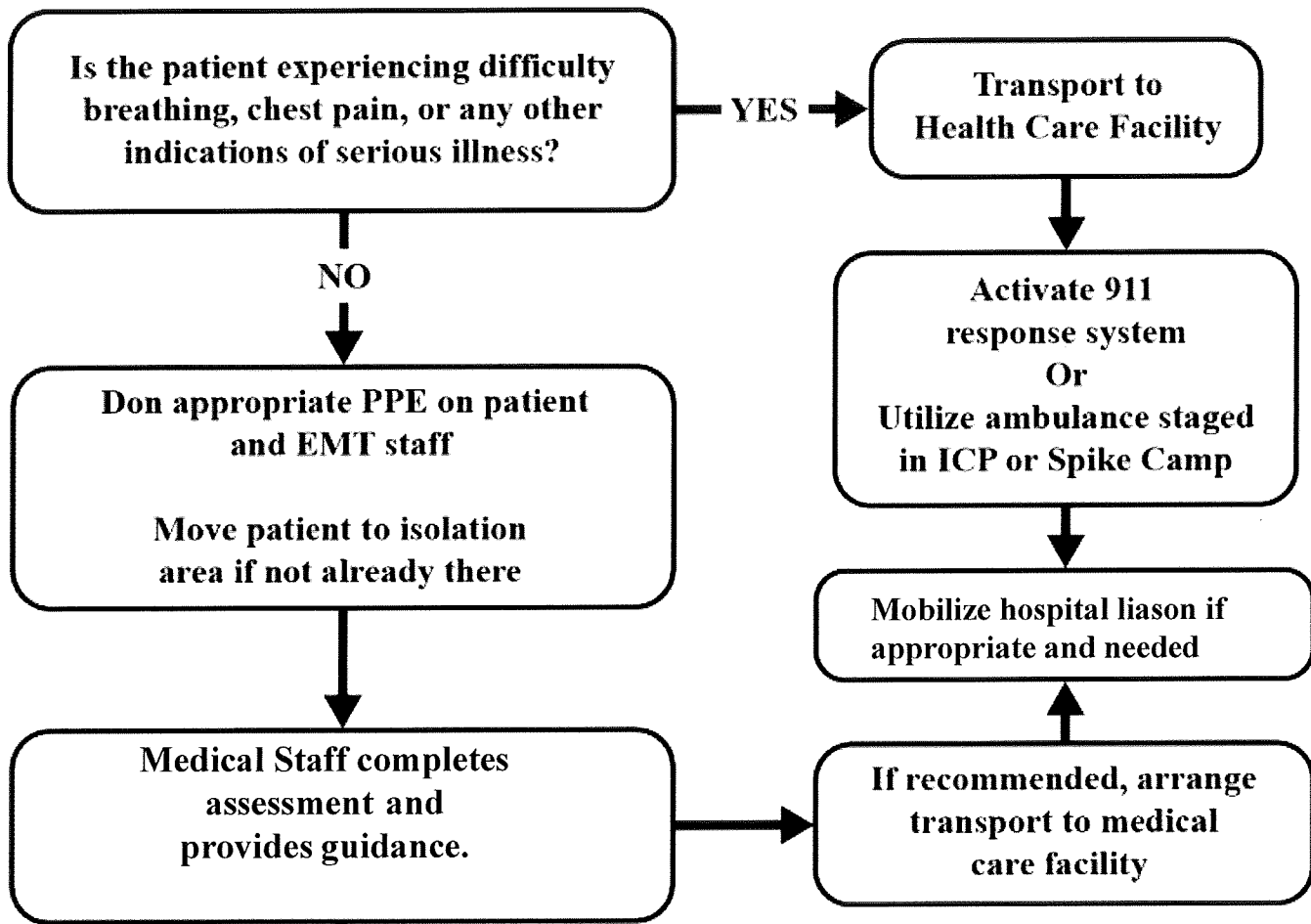
#### **Communications**

- Review the Communications Plan
- Ensure all your radios are correctly programmed
- Test the frequencies to ensure adequate coverage
- If coverage is not adequate ensure mitigations are in place before committing to assignment
- Give good feedback to ensure problem areas can be addressed

Your Safety Team – Skeet Houston (SOF2), Brian Burbridge (SOF2), Wes Lathen (SOF2), Tracy Connelly (SOF2) -T

An individual is identified with a possible COVID-19 infection based on the screening tool.

**Cough more than expected? Shortness of breath or difficulty breathing? Fever? Chills? Muscle pain outside your normal for firefighting? Sore throat? New loss off taste or smell? Temperature greater than 100.4?**



**NWCG COVID Screening Tool**



<b>Following COVID-19 Test Results options are:</b>
<b>Return to work</b>
<b>Isolate</b>
<b>Demobilization off Incident</b>

# INCIDENT RADIO COMMUNICATIONS PLAN (ICS 205)

## Controlled Unclassified Information//Basic

<b>1. Incident Name:</b> HALFWAY HILL	<b>2. Date/Time Prepared:</b> Date: 07/23/2022 Time: 1700	<b>3. Operational Period:</b> DAY
	Date/Time From: 07/24/2022 0600	Date/Time To: 07/24/2022 2000
	SUN	SUN

**4. Basic Radio Channel Use:**

Zone Group	Ch #	Function	Channel Name/Trunked Radio System Talkgroup	Assignment	RX Freq	RX Tone/NAC	TX Freq	TX Tone/NAC	Mode (A, D, or M)	Remarks
	1	TACTICAL	TAC1	DIV A/D/W	168.0500	123.0	168.0500	123.0	A	DIV A/D/W
	2	TACTICAL	TAC 2	UNASSIGNED	168.2000	123.0	168.2000	123.0	A	UNASSIGNED
	3	TACTICAL	TAC 3	DIV M/T	168.6000	123.0	168.6000	123.0	A	DIV M/T
	4	TACTICAL	TAC 4	UNASSIGNED	166.7250	123.0	166.7250	123.0	A	UNASSIGNED
	5	TACTICAL	TAC 5	UNASSIGNED	166.7750	123.0	166.7750	123.0	A	UNASSIGNED
	6	TACTICAL	TAC 6	UNASSIGNED	168.2500	123.0	168.2500	123.0	A	UNASSIGNED
	7	COMMAND	CMD 7	CMD	170.4500	123.0	168.1000	123.0	A	WHITE PINE PEAK
	8	COMMAND	CMD 8	CMD	169.5375	123.0	164.7125	123.0	A	DEVILS KITCHEN
	10	COMMAND	BLM WHITE PINE	CMD	172.6250	0.0	164.9500	103.5	A	BLM WHITE PINE REPEATER
	11	COMMAND	NOTCH	CMD	172.4375	0.0	166.0000	167.9	A	BLM NOTCH PEAK REPEATER
	12	COMMAND	FS DELTA	CMD	172.2500	0.0	165.0125	123.0	A	FS DELTA REPEATER
	13	AIR TO GROUND	A/G PRI	AIR	168.4000	0.0	168.4000	0.0	A	AIR TO GROUND PRIMARY
	14	AIR TO GROUND	A/G 18	AIR	168.0125	0.0	168.0125	0.0	A	FISHLAKE AIR TO GROUND
	15	AIR TO GROUND	V MED 28	AIR	155.3400	0.0	155.3400	156.7	A	MEDEVAC
	16	AIR GUARD	AIRGUARD	EMERGENCY	168.6250	0.0	168.6250	110.9	A	AIR GUARD

**5. Special Instructions:**

<b>6. Prepared By</b> (Communications Unit Leader)	Name: JOSH CORNELL	Signature:
ICS 205	IAP Page	Date/Time: 07/23/2022 1700



<b>Resource Advisor</b>	<b>Incident Name</b> Halfway Hill	<b>Date/Time Prepared</b> 07/22/2022 18:45	<b>Prepared by</b> MONTCALM
<b>Staffing</b>	<b>Name</b>		<b>Contact</b>
	Kelly, Sean		Radio
	Montcalm, Jessica	Archaeologist	Cell: 775-385-5162
	Robison, Doug		Radio
	Rooker, Angela	Archaeologist(t)	Radio
<b>RESOURCE OBJECTIVES &amp; OPERATIONAL EMPHASIS</b>			
HERITAGE/CULTURAL RESOURCES <ul style="list-style-type: none"> <li>Protect cultural resources.</li> </ul> NOXIOUS WEEDS <ul style="list-style-type: none"> <li>Limit the spread of noxious and invasive weed species.</li> </ul> SUPPRESSION REPAIR <ul style="list-style-type: none"> <li>Repair suppression related impacts on the fire.</li> </ul>			
<b>RESOURCE PROTECTION STANDARDS</b>			
<b>Heritage &amp; Cultural – Standards</b>			<b>Division/Area</b>
✓ All cultural resources and human remains are protected. <u>Please leave them in place – no collecting.</u> Please coordinate with the READs if cultural resources are found.			All
<b>Noxious Weeds – Standards</b>			
✓ WEED WASH: All resources demobilizing from the fire will go through the weed wash before leaving the incident. Weed wash location has been established			All
<b>Suppression Repair - Standards</b>			
✓ GENERAL: Follow the suppression repair standards provided in the Suppression Repair Plan and as outlined below. Limit further soil disturbance.			All
✓ DOZER LINES: <ul style="list-style-type: none"> <li>Pull berms and associated material back into the bladed area. Re-contour as possible.</li> <li>As able, spread the brush, limbs, rocks or sod back across the exposed soils of the fireline.</li> <li>Discourage off-road travel on dozer lines by ripping the soil or placing boulders, logs, or other natural features on dozer lines where they tie into established roads.</li> <li>Remove material from ephemeral drainages. Avoid pushing sediment into draws, wet areas, or waterways.</li> </ul>			
✓ HANDLINE <ul style="list-style-type: none"> <li>Remove “cup trenches” on perimeter line.</li> <li>As possible, pull back berms, topsoil, and organic debris to blend with adjacent undisturbed ground.</li> </ul>			
✓ SLASH PILES <ul style="list-style-type: none"> <li>Disperse slash piles along roads and other features to limit the concentration of fuels.</li> </ul>			
✓ DROP POINTS/STAGING AREAS/HELISPOTS/DIP SITES/SPIKE CAMPS <ul style="list-style-type: none"> <li>Remove all trash and debris, backhaul all unused supplies.</li> <li>In areas where trees or shrubs were cut or cleared, pull slash back in to minimize visibility.</li> <li>In areas with excessive soil disturbance reseed if determined necessary by a resource advisor.</li> </ul>			
<b>Suppression Repair - SPECIFICS</b>			
✓ REMAINING DOZER LINE IN ALPHA – SENSITIVE SEGMENT: <ul style="list-style-type: none"> <li>Using hand tools, pull berms and associated material back into the bladed area. Re-contour as possible, but not outside of the dozer cut.</li> <li>As able, spread the brush, limbs, rocks or sod back across the exposed soils of the fireline.</li> </ul>			Alpha, Delta, All
✓ SLASH PILES <ul style="list-style-type: none"> <li>Disperse slash piles along roads and other features to limit the concentration of fuels.</li> </ul>			

# HALFWAY HILL INCIDENT

UT-SCS-220216

## SUBMITTING TIME

- CTRs and Shift Tickets should be submitted at a minimum, every other day.
- Justifications are required in the remarks when posting Time without meal breaks.
- Hazard Pay is required to be justified in the remarks, such as: “Firefighting on an uncontrolled Fireline.”
- The preferred method of turning in CTR’s, Shift Tickets, or other associated Time documents is direct to our Finance email: [2022.halfwayhill.finance@firenet.gov](mailto:2022.halfwayhill.finance@firenet.gov).
- Taking a picture of your signed CTR/Shift Ticket is perfectly acceptable.
- If electronic delivery is not an option for you, we will accept hard copies at the Finance yurt.
- Our Finance email does not have an auto reply.

### Fillable PDF CTR/Shift Ticket:

Acceptable PDF’s- We provide acceptable templates on the Virtual Documentation page within the IAP. However, we accept any version that is signable and has all of the required fields. Be mindful of what browser you open the PDF in, downloading the PDF form tends to prevent filling and signature issues.

Option 1 - Resource fills out CTR/Shift Ticket and e-mails to supervisor for signature. Supervisor digitally signs CTR then e-mails signed copy back to resource AND resource forwards to Finance:

[2022.halfwayhill.finance@firenet.gov](mailto:2022.halfwayhill.finance@firenet.gov).

Option 2 – Resource fills out CTR, supervisor (if comfortable) signs directly on same device. Resource e-mails CTR directly to [2022.halfwayhill.finance@firenet.gov](mailto:2022.halfwayhill.finance@firenet.gov).

### Picture of Hard Copy CTR/Shift Ticket:

Option 1 – Resource fills out hard copy CTR, supervisor signs hard copy. Resource takes a picture of the signed document, reviews picture to ensure it’s legible, and emails to Finance: [2022.halfwayhill.finance@firenet.gov](mailto:2022.halfwayhill.finance@firenet.gov).

Option 2 - Resource fills out hard copy CTR, snaps a picture of CTR and e-mails/texts to supervisor. Supervisor digitally signs CTR then e-mails signed copy back to resource AND [2022.halfwayhill.finance@firenet.gov](mailto:2022.halfwayhill.finance@firenet.gov).

### Resources on Demob list:

- Ensure all required documents have been sent to Finance and ensure Time submittals are current.

Contact Finance with any questions: 435-201-2958

## Halfway Hill Contact List:

**INFORMATION**                      [2022.halfwayhill@firenet.gov](mailto:2022.halfwayhill@firenet.gov)

**FINANCE**                              [2022.halfwayhill.finance@firenet.gov](mailto:2022.halfwayhill.finance@firenet.gov)

**DMOB/CHECK-IN  
RESOURCES**                      [2022.halfwayhill.resources@firenet.gov](mailto:2022.halfwayhill.resources@firenet.gov)

## Demobilization Process:

Step 1: All demobing resources will first call or stop by the Demob/check-in window to verify status.  
Demob: **#435-691-1419**

Step 2: Return any radios or checked-out supplies.

Step 3: Equipment will need to go through weed wash and Ground Support to obtain post inspection.

Step 4: Closeout Time with the Finance Section

Step 5: Once all steps are completed the resource will call or stop by Demob/Check-in for final verification.

## TRAINING MESSAGE

**Training Specialist Check-in** If you have a position task book (PTB), please scan the QR code below to initiate the check-in process with the Incident Training Specialist. Please complete the form in its entirety. Upon completion, at your earliest convenience, please email a copy of your qualification card and a photo of your position task book cover (email addresses listed below).

For your convenience, an electronic ICS-225 or ICS-226, Evaluation Record and other appropriate documentation will be sent to you after you complete the check-in process.



### [HALFWAY HILL TRAINEE CHECK-IN](#)

**Training Specialist Closeout** - In order to receive credit for your assignment, you must close out with the Incident Training Specialist prior to demob.

Close out requirements include:

1. Ensure your trainer(s) / evaluator(s) has/have initialed completed tasks in your PTB
2. Obtain an Incident Performance
3. Obtain an Evaluation Record
4. If evaluator initialed #1 on your Evaluation Record, ensure he/she signs as final evaluator (located on the backside of your PTB cover page)
5. Email all documentation (including item #4), when appropriate.
6. Complete Exit Interview (Form will be provided via email)

PRIMARY: JoAnne Ware, Incident Training Specialist (T)

Email: [joanne\\_ware@firenet.gov](mailto:joanne_ware@firenet.gov)

SECONDARY: Debra Burgos, Incident Training Specialist (Q)

Email: [debra\\_burgos@firenet.gov](mailto:debra_burgos@firenet.gov)

<b>MEDICAL PLAN</b>	1. INCIDENT NAME: <b>Halfway Hill</b>	2. DATE PREPARED: <b>7/23/2022</b>	3. TIME PREPARED: <b>2000</b>	4. OPERATIONAL PERIOD <b>7/24/2022 0600-2300</b>			
	5. INCIDENT MEDICAL AID STATIONS						
MEDICAL AID STATIONS			LOCATION			PARAMEDIC	
ICP Med Unit			Tyla Northrup			Yes	
ICP Med Unit			Stephen Procedo MEDL(t)			Yes	
6. TRANSPORTATION							
A. Ambulance Services							
NAME		LOCATION		PHONE		PARAMEDIC	
East Millard Ambulance (AEMT)		Fillmore, Utah		911		No	
Sevier County EMS		Richfield, Utah		(435) 896-6471		No	
AIR AMBULANCE SERVICES							
Life Flight Network		Provo, Utah		911		Yes	
Air Med		Nephi, Utah		911		Yes	
B. Incident Resources							
NAME		LOCATION			PARAMEDIC		
Steve Wolfstich		EMPF/ALS KIT/4X4 Vehicle			Yes		
7. HOSPITALS							
NAME	ADDRESS	TRAVEL TIME		PHONE	TRAUMA	HELIPAD	BURN CENTER
Fillmore Community Hospital (IHC)	674 South Highway 99 Fillmore, Utah	AIR 10 min	GRN 15 min	(435) 743- 5591	LVL 4	Yes	No
Sevier Valley Hospital	1000 North Main Street Richfield, Utah	Air 45 min	GRN3 0 min	(435) 893- 4100	LVL 4	Yes	No
Utah Valley Hospital	1034 North 500 West Provo, Utah	Air 45 min	GRN 1.5 hr	(801) 357- 2130	LVL 2	Yes	No
University Hospital	50 North Medical Drive SLC, Utah	Air 1 hr	GRN2 hr	(801) 583- 5000	LVL 1	Yes	Yes
9. PREPARED BY Jon Slatore (MEDL)		10. REVIEWED BY Skeet Houston (SOF2)					



# MEDICAL PLAN (ICS 206 WF)

Controlled Unclassified Information//Basic

Medical Incident Report																													
<p><b>FOR A NON-EMERGENCY INCIDENT, WORK THROUGH CHAIN OF COMMAND TO REPORT AND TRANSPORT INJURED PERSONNEL AS NECESSARY.</b></p> <p><b>FOR A MEDICAL EMERGENCY: IDENTIFY ON SCENE INCIDENT COMMANDER BY NAME AND POSITION AND ANNOUNCE "MEDICAL EMERGENCY" TO INITIATE RESPONSE FROM IMT COMMUNICATIONS/DISPATCH.</b></p>																													
<p><b>Use the following items to communicate situation to communications/dispatch.</b></p>																													
<p><b>1. CONTACT COMMUNICATIONS / DISPATCH</b> (Verify correct frequency prior to starting report)  <i>Ex: "Communications, Div. Alpha. Stand-by for Emergency Traffic."</i></p> <p><b>2. INCIDENT STATUS:</b> Provide incident summary (including number of patients) and command structure.  <i>Ex: "Communications, I have a Red priority patient, unconscious, struck by a falling tree. Requesting air ambulance to Forest Road 1 at (Lat./Long.) This will be the Trout Meadow Medical, IC is TFLD Jones. EMT Smith is providing medical care."</i></p>																													
Severity of Emergency / Transport Priority	<input type="checkbox"/> <b>RED / PRIORITY 1 Life or limb threatening injury or illness. Evacuation need is IMMEDIATE</b> <i>Ex: Unconscious, difficulty breathing, bleeding severely, 2° – 3° burns more than 4 palm sizes, heat stroke, disoriented.</i> <input type="checkbox"/> <b>YELLOW / PRIORITY 2 Serious Injury or illness. Evacuation may be DELAYED if necessary.</b> <i>Ex: Significant trauma, unable to walk, 2° – 3° burns not more than 1-3 palm sizes.</i> <input type="checkbox"/> <b>GREEN / PRIORITY 3 Minor Injury or illness. Non-Emergency transport</b> <i>Ex: Sprains, strains, minor heat-related illness.</i>																												
Nature of Injury or Illness & Mechanism of Injury			Brief Summary of Injury or Illness <i>(Ex: Unconscious, Struck by Falling Tree)</i>																										
Transport Request			Air Ambulance / Short Haul / Hoist Ground Ambulance / Other																										
Patient Location			Descriptive Location & Lat./Long. (WGS84)																										
Incident Name			Geographic Name + "Medical" <i>(Ex: Trout Meadow Medical)</i>																										
On-Scene Incident Commander			Name of on-scene IC of Incident within an Incident <i>(Ex: TFLD Jones)</i>																										
Patient Care			Name of Care Provider <i>(Ex: EMT Smith)</i>																										
<p><b>3. INITIAL PATIENT ASSESSMENT:</b>  <i>Complete this section for each patient as applicable (start with the most severe patient)</i></p> <p>Patient Assessment: See IRPG PAGE 106 or use Vital Signs Report at right</p> <p>Treatment:</p>			<p><b>Great Basin Team 4 Medical Unit: VITAL SIGNS REPORT</b>                      Age _____ Weight _____</p> <p><b>Level of Consciousness:</b>                      Alert and Oriented to: Person Place Time Event</p> <p>Responsive to: Verbal Stimulus Pain Stimulus Unresponsive</p> <p><b>Breathing:</b> Not Normal Difficult/Labored Rate _____</p> <p><b>Pulse Rate:</b> Absent Present: _____/minute</p> <p><b>Skin Color:</b> Normal Pale Bluish Red</p> <p><b>Skin Moisture:</b> Normal Dry Moist Profuse Sweating</p> <p><b>Skin/Body Temp:</b> _____°F Normal Hot Cold Cool</p> <p><b>Pupils:</b> Equal and Reactive Unequal Dilated Constricted</p> <p><b>Blood Pressure:</b> SYS _____/DIA _____</p> <p><b>Oxygen Saturation with Pulse Oximeter (SaO2):</b> _____</p> <p><b>Blood Glucose Level:</b> _____</p>																										
<p><b>4. TRANSPORT PLAN:</b></p> <p>Evacuation Location (if different): <i>(Descriptive Location (drop point, intersection, etc.) or Lat./Long.)</i> Patient's ETA to Evacuation Location:</p> <p>Helispot / Extraction Site Size and Hazards:</p>																													
<p><b>5. ADDITIONAL RESOURCES / EQUIPMENT NEEDS:</b>  <i>Example: Paramedic/EMT, Crews, Immobilization Devices, AED, Oxygen, Trauma Bag, IV/Fluid(s), Splints, Rope rescue, Wheeled litter, HAZMAT, Extrinsic</i></p>																													
<p><b>6. COMMUNICATIONS: Identify State Air/Ground EMS Frequencies and Hospital Contacts as applicable</b></p> <table border="1" style="width: 100%; border-collapse: collapse;"> <thead> <tr> <th style="width: 15%;">Function</th> <th style="width: 25%;">Channel Name/Number</th> <th style="width: 25%;">Receive (RX)</th> <th style="width: 15%;">Tone/NAC *</th> <th style="width: 15%;">Transmit (TX)</th> <th style="width: 10%;">Tone/NAC *</th> </tr> </thead> <tbody> <tr> <td>COMMAND</td> <td></td> <td></td> <td></td> <td></td> <td></td> </tr> <tr> <td>AIR-TO-GRND</td> <td></td> <td></td> <td></td> <td></td> <td></td> </tr> <tr> <td>TACTICAL</td> <td></td> <td></td> <td></td> <td></td> <td></td> </tr> </tbody> </table>						Function	Channel Name/Number	Receive (RX)	Tone/NAC *	Transmit (TX)	Tone/NAC *	COMMAND						AIR-TO-GRND						TACTICAL					
Function	Channel Name/Number	Receive (RX)	Tone/NAC *	Transmit (TX)	Tone/NAC *																								
COMMAND																													
AIR-TO-GRND																													
TACTICAL																													
<p><b>7. CONTINGENCY: <u>Considerations:</u></b> <i>If primary options fail, what actions can be implemented in conjunction with primary evacuation method? Be thinking ahead.</i></p>																													
<p><b>8. ADDITIONAL INFORMATION:</b> <i>Updates/Changes, etc.</i></p>																													
<p><b>REMEMBER:</b> Confirm ETAs of resources ordered. Act according to your level of training. Be Alert. Keep Calm. Think Clearly. Act Decisively.</p>																													



