

**HALFWAY HILL FIRE  
INCIDENT ACTION PLAN  
(PN)PT4U(22)-1522  
UT-SCS-220216**

**MONDAY  
JULY 25, 2022**



**BART MADSEN/NICK SCHENCK (T) IC3 TEAM**

## INCIDENT OBJECTIVES (ICS 202)

<b>1. Incident Name:</b>		<b>2. Operational Period: DAY</b>	
HALFWAY HILL		Date/Time From: 07/25/2022 0600      MON	Date/Time To: 07/25/2022 2000      MON
<b>3. Objective(s):</b>			
Prevent fire spread to private property and minimize impacts to power, telecommunications, culinary water, irrigation, and recreational infrastructure.			
Employ and implement high probability of success strategies and tactics that are commensurate with the inherent risks in the wildland fire environment.			
Coordinate with resource advisor(s) to minimize negative impacts from fire suppression actions while documenting and planning for future suppression rehabilitation.			
Continuously implement and update near and long-term strategic plans with intent to keep final perimeter as small as possible.			
Provide fire information thru public interactions, web platforms, and social media products to public, stakeholders, and agencies to maintain and enhance community relationships throughout the duration of the incident.			
Continually implement and enforce COVID-19 mitigation strategies to lessen the probability of spread through fire personnel and the public.			
<b>4. Operational Period Command Emphasis:</b>			
Weather conditions will be changing, be alert.			
<b>General Situational Awareness:</b>			
Maintain balanced momentum regardless of task intensity or composition.			
<b>5. Site Safety Plan Required?</b> Yes <input type="checkbox"/> No <input checked="" type="checkbox"/>			
<b>Approved Site Safety Plan(s) Located</b>			
<b>6. Incident Action Plan</b> (the items checked below are included in this Incident Action Plan):			
<input checked="" type="checkbox"/> ICS 202	<input type="checkbox"/> ICS 207	Other Attachments:	
<input checked="" type="checkbox"/> ICS 203	<input type="checkbox"/> ICS 208	<input type="checkbox"/> _____	
<input checked="" type="checkbox"/> ICS 204	<input checked="" type="checkbox"/> ICS 220	<input type="checkbox"/> _____	
<input checked="" type="checkbox"/> ICS 205	<input type="checkbox"/> Map/Chart	<input type="checkbox"/> _____	
<input type="checkbox"/> ICS 205A	<input checked="" type="checkbox"/> Weather Forecast/Tides/Currents	<input type="checkbox"/> _____	
<input checked="" type="checkbox"/> ICS 206			
<b>7. Prepared by:</b> RICH JAROS		<b>Position/Title:</b> PSC3	<b>Signature:</b>
<b>8. Approved by Incident Commander:</b>		<b>Name:</b> NICK SCHENCK	<b>Signature:</b>
<b>ICS 202</b>		<b>IAP Page</b>	<b>Date/Time:</b> 07/24/2022 2100

## ORGANIZATION ASSIGNMENT LIST (ICS 203)

<b>1. Incident Name:</b>		<b>2. Operational Period: DAY</b>	
HALFWAY HILL		Date/Time From: 07/25/2022 0600      MON	Date/Time To: 07/25/2022 2000      MON
<b>3. Incident Commander(s) and Command Staff:</b>			
IC/UC	MADSEN, BART 435-612-3153 SCHENCK, NICK 435-558-0349 (T)		
SAFETY OFFICER	BECKSTRAND, JAY 435-979-6142		
INFORMATION OFFICER	BRADSHAW, KOURTNEY 435-421-1595		
<b>4. Agency/Organization Representative(s):</b>			
Agency/Organization	Name		
USFS	MONROE, BRIAN WHITMER, JARED (T)		
UT - DNR	TORGERSON JASON		
BLM	GATES, MICHAEL		
USFS - READ			
<b>5. Planning Section:</b>			
CHIEF	JAROS, RICH 435-691-1419		
GIS SPECIALIST			
INCIDENT METEOROLOGIST	SEAMAN, MIKE		
<b>6. Logistics Section:</b>			
CHIEF	CHAPPELL, GLEN 435-979-8341 MCCOLLIN, RYAN 435-201-9746 (T)		
MEDICAL UNIT	NORTHRUP, TYLA 435-979-5285		
<b>7. Operations Section:</b>			
OPS SECTION CHIEF	CORNWALL, KELLY 435-691-6001 THATCHER, QUINCY 435-558-0680 (T)		
<b>8. Finance/Administration Section:</b>			
CHIEF	RANGLES, TRINA 435-201-9539		
DEPUTY	WILSON, FRAN 435-231-5403		
<b>9. Prepared By:</b>	<b>Name:</b> RICH JAROS	<b>Position/Title:</b> PSC3	<b>Signature:</b>
ICS 203	IAP Page	Date/Time: 07/24/2022 2100	



# Halfway Hill 3 Day Fire Weather Forecast



FORECAST NO: 15 NAME OF FIRE: Halfway Hill  
 PREDICTION FOR: Mon-Wed, July 25-27, 2022 SIGNED: Mike Seaman  
 FORECAST ISSUED: 07/24/2022 at 1900 Incident Meteorologist (Mike Seaman)

**WEATHER DISCUSSION:** Monsoon moisture will remain in place through Tuesday resulting in scattered showers and thunderstorms each afternoon/evening. Any storms which move over the fire will be capable of producing rainfall of 0.25 in a short period of time, in addition to gusty and erratic winds to 40 mph, and frequent cloud to ground lightning. With the increase in moisture, daytime RH will remain elevated with good overnight recovery. A drying and slight warming trend will develop late Tuesday though Thursday as a light northerly flow develops across the area. Lingering moisture will maintain a threat for isolated showers/thunderstorms each afternoon. With the exception of outflow, terrain driven winds are expected across most locations through the week, with a general west-northwest wind across exposed ridgelines.

**MONDAY:** Partly cloudy w/isolated showers until 1200, then mostly cloudy w/scattered showers/t-storms.

**MAX TEMP:** 6500 ft: 88-91° F 8000 ft: 77-80° F **TREND:** Up 8-10° F  
**MIN RH:** 6500 ft: 20-23% 8000 ft: 27-30% **TREND:** Down 15-20%

**20 FT WINDS (mph):** **\*\* Gusty Erratic Winds near Showers/Thunderstorms \*\***  
 Upper Exposed Ridges: West-northwest 3-8 w/gusts 7-10 increasing to 5-9 w/gusts 12-18 after 1100.  
 Lower Slopes & Canyons: Slope/drainage 3-8 becoming west-northwest 4-7 w/gusts 10-16 after 1100.

**INVERSION:** Morning inversion below 7500 feet mixing out by 1000 **HAINES INDEX:** 3 (Very Low)  
**LAL:** 1 until 1200, then 4 **PCPN/STORM CHC:** 20% until 1200, then 50% **CWR:** 30%

**TUESDAY:** Partly cloudy w/isolated showers until 1200, then mostly cloudy w/scattered showers/t-storms

**MAX TEMP:** 6500 ft: 89-92° F 8000 ft: 78-81° F **MIN TEMP:** 6500 ft: 62-65° F 8000 ft: 58-61° F  
**MIN RH:** 6500 ft: 19-22% 8000 ft: 25-28% **MAX RH:** 6500 ft: 55-60% 8000 ft: 60-65%

**20 FT WINDS (mph):** **\*\* Gusty Erratic Winds near Showers/Thunderstorms \*\***  
 Upper Exposed Ridges: Northwest 3-8 w/gusts 7-10 increasing to 5-9 w/gusts 12-18 after 1100.  
 Lower Slopes & Canyons: Slope/drainage 3-8 becoming west-northwest 5-8 with gusts 12-18 after 1100.

**INVERSION:** Morning inversion below 7500 feet mixing out by 1000 **HAINES INDEX:** 4 (Low)  
**LAL:** 1 until 1200, then 3 **PCPN/STORM CHC:** 20% until 1200, then 40% **CWR:** 25%

**WEDNESDAY:** Mostly sunny until 1200, then partly cloudy with isolated showers and thunderstorms.

**MAX TEMP:** 6500 ft: 91-94° F 8000 ft: 80-83° F **MIN TEMP:** 6500 ft: 62-65° F 8000 ft: 58-61° F  
**MIN RH:** 6500 ft: 17-21% 8000 ft: 22-25% **MAX RH:** 6500 ft: 50-55% 8000 ft: 53-58%

**20 FT WINDS (mph):**  
 Upper Exposed Ridges: North-northwest 3-8 w/gusts 7-10 increasing to 5-9 w/gusts 12-18 after 1100.  
 Lower Slopes & Canyons: Slope/drainage 3-8 becoming Northwest 5-8 with gusts 12-18 after 1100.

**INVERSION:** Morning inversion below 7500 feet mixing out by 1000 **HAINES INDEX:** 5 (Moderate)  
**LAL:** 1 until 1200, then 2 **PCPN/STORM CHC:** 10% until 1200, then 20% **CWR:** 10%

**EXTENDED FORECAST (6500 ft):** Warm and generally dry, with terrain driven winds. Slight chance of PM storms

**THU:** 20% chance PM storms **Low/High Temp:** 64°/94° **Max/Min RH:** 45/18% **Aftn Wind:** WNW 6-9 G 14-18 mph  
**FRI:** 20% chance PM storms **Low/High Temp:** 62°/93° **Max/Min RH:** 43/19% **Aftn Wind:** W 5-8 G 12-16 mph  
**SAT:** 30% chance PM storms **Low/High Temp:** 62°/92° **Max/Min RH:** 42/20% **Aftn Wind:** W 5-8 G 12-26 mph

**Contact Info:** NWS Salt Lake City: 801-524-5066. **Spot Forecast Request Page:** <https://www.weather.gov/spot/request/>

**Division/Group Assignment List (ICS 204 WF)**  
Controlled Unclassified Information//Basic

<b>1. Incident Name:</b>				<b>3.</b>		
HALFWAY HILL				<b>Branch:</b>		<b>Division/Group</b>
<b>2. Operational Period:</b> DAY				A/D/W		
Date/Time From: 07/25/2022 0600 MON		Date/Time To: 07/25/2022 2000 MON				
<b>4. Operations Personnel</b>						
<b>OPS</b> CORNWALL, KELLY THATCHER, QUINCY (T)			<b>DIVISION/GROUP SUPERVISOR</b>		CURLEY, JASON SHIELDS, RUSSELL (T)	
<b>5. Resources Assigned this Period</b>						
Strike Team / Task Force / Resource Designator		LWD	Leader	Number Persons	Drop Off PT./Time	Pick Up PT./Time
C-9 CRW1 LAKEVIEW IHC		07/25	BLOFSKY, ALLAN M	22	ICP/0700	ICP/2000
C-19 CRW1 LOGAN IHC		07/30	BAKER, RYAN C	23	ICP/0700	ICP/2000
O-119 WFM2 TUSHAR MOUNTAIN WFM		08/07	HUNT, TREVER	10	ICP/0700	ICP/2000
E-115 ENG3 UT-WDD - ENG 5320*			SPENCE, NATE	4	ICP/0700	ICP/2000
E-116 ENG3 UT-WDD - ENG 5322 *			STEVENS, ROYCE	4	ICP/0700	ICP/2000
SEVERITY ENG6 KAIBAB 631*			LIHNE	3	ICP/0700	ICP/2000
SEVERITY ENG3 UT-FIF 411*			DZUIL, LINCOLN	3	ICP/0700	ICP/2000
E-135 ENG6 NORTHERN UTAH FIRE		08/05	GORDON, TONY	3	ICP/0700	ICP/2000
E-136 ENG6 BRIGHAM CITY FD - BR21		08/05	DESANDRE, ANTHONY R	2	ICP/0700	ICP/2000
E-110 ENG6 SCHOLL FIRE & FUELS MANAGEMENT, INC. - 1FD0W5HT		07/27	HAYS, BEN	3	ICP/0700	ICP/2000
E-2 WTT2 UT-CLD - WT4910		07/30	JULANDER, DAMEON	1	ICP/0700	ICP/2000
E-132 EXC2 CUTTING EDGE		08/04	RIGGS, TOM	2	ICP/0700	ICP/2000
O-59 TFLD MILLER, KEN		07/25		1	ICP/0700	ICP/2000
O-57 TFLD DAY, DAVID R		07/25		1	ICP/0700	ICP/2000
O-93 EMPF WOLFSTICH, STEVE		07/28		1	ICP/0700	ICP/2000
<b>6. Control Operations/Work Assignments:</b>						
<p><b>DIV A</b> Secure and mop-up the along the line in the area of the burnout operation to the extent necessary to prevent any potential flare ups or spots that could threaten the line. Continue to maintain careful watch for any potential threats to the control line from the A/W break to the A/D break. Prepare for any backhaul and demobilization of unneeded resources and supplies. Successful completion of this would further secure the containment lines, minimizing the potential fire impacts to the Virginia Hills subdivision, and surrounding residences. Coordinate with the READ on suppression repair needs utilizing the excavator.</p>						
<b>8. Division/Group Communication Summary</b>						
Function	Channel	RX Frequency N/W	RX Tone/NAC	TX Frequency N/W	TX Tone/NAC	Mode
COMMAND	SEE	COMM	PLAN			
<b>9. Prepared By (Resource Unit Leader)</b>			<b>Approved By (Planning Section Chief)</b>		<b>Date</b>	<b>Time</b>
RICH JAROS			RICH JAROS		07/24/2022	2100

**Division/Group Assignment List (ICS 204 WF)**  
Controlled Unclassified Information//Basic

<b>1. Incident Name:</b>				<b>3.</b>			
HALFWAY HILL				<b>Branch:</b>		<b>Division/Group</b>	
<b>2. Operational Period:</b> DAY				A/D/W			
Date/Time From: 07/25/2022 0600 MON		Date/Time To: 07/25/2022 2000 MON					
<b>4. Operations Personnel</b>							
<b>OPS</b>		CORNWALL, KELLY THATCHER, QUINCY (T)		<b>DIVISION/GROUP SUPERVISOR</b>		CURLEY, JASON SHIELDS, RUSSELL (T)	
<b>6. Control Operations/Work Assignments:</b>							
<p><b>DIV D</b> Utilize the tactics that will provide the highest probability of success in securing the fires edge around Horse Hollow; further minimizing fire growth and potential impacts to the water ways during heavy rain events. Work to establish better depth off the indirect handline, in coordination with the aerial ignition operation. Successfully securing this line will minimize the potential for future fire spread to the north into the North Fork of Chalk Creek drainage, and west towards the community.</p> <p><b>DIV W</b> Continue to regularly check the line through the most appropriate method to ensure nothing will impact the containment along the control lines. Needs: None</p>							
<b>7. Special Instructions:</b>							
<p><b>DIV A</b> Initial Attack resources designated by * Visit weed wash station frequently, especially if you are changing working locations on the fire. Be aware of cattle and permittees in the fire area. Notify DIVS of any cattle around active fire. DIVS report locations of cattle to the LOFR. Coordinate with the READ or Archeologist before any new dozer line is established. Water tenders track how many tanks are filled from the hydrant, and turn in that number to the DIVS. Areas of resource concern that need to be avoided are marked with white flagging.</p> <p><b>DIV D</b> Initial Attack resources designated by * Visit weed wash station frequently, especially if you are changing working locations on the fire. Be aware of cows and local ranchers in the fire area. Notify DIVS of any cattle around active fire, or within the indirect line perimeter. DIVS report locations of cattle to the LOFR. Coordinate with the READ or Archeologist before any new dozer line is established. Continue to update progress of completed road prep into Field Maps.</p> <p><b>DIV W</b> Initial Attack resources designated by * Visit weed wash station frequently, especially if you are changing working locations on the fire.</p>							
<b>8. Division/Group Communication Summary</b>							
Function	Channel	RX Frequency N/W	RX Tone/NAC	TX Frequency N/W	TX Tone/NAC	Mode	
COMMAND	SEE	COMM	PLAN				
<b>9. Prepared By (Resource Unit Leader)</b>			<b>Approved By (Planning Section Chief)</b>		<b>Date</b>	<b>Time</b>	
RICH JAROS			RICH JAROS		07/24/2022	2100	

**Division/Group Assignment List (ICS 204 WF)**  
Controlled Unclassified Information//Basic

<b>1. Incident Name:</b>			<b>3.</b>			
HALFWAY HILL			<b>Branch:</b>		<b>Division/Group</b>	
<b>2. Operational Period:</b> DAY			M/T			
Date/Time From: 07/25/2022 0600 MON		Date/Time To: 07/25/2022 2000 MON				
<b>4. Operations Personnel</b>						
<b>OPS</b>		CORNWALL, KELLY THATCHER, QUINCY (T)		<b>DIVISION/GROUP SUPERVISOR</b>		IVIE, RUSS PFEIFFER, LOGAN (T)
<b>5. Resources Assigned this Period</b>						
Strike Team / Task Force / Resource Designator		LWD	Leader	Number Persons	Drop Off PT./Time	Pick Up PT./Time
O-110 WFM2 MODULE EAGLE LAKE		08/04	BORDEN, BRANDON	8	ICP/0700	ICP/2000
O-121 WFM1 MODULE - WILDLAND FIRE - T1- USFS - SELWAY		07/28	SOHR, JACOB	10	M/T SPIKE/0700	M/T SPIKE/2000
O-92 EMPF PROCEDO, STEPHEN VINSON		07/27		1	M/T SPIKE/0700	M/T SPIKE/2000
<b>6. Control Operations/Work Assignments:</b>						
Continue to check the hand-line along Chalk Creek Road near Copley's Canyon trail to the Pistol Rock Rec Site.						
Continue to check the fires edge along Chalk Creek to the Cedar Springs and Nephi Canyon confluence.						
Prepare for any backhaul and demobilization of unneeded resources and supplies.						
<b>7. Special Instructions:</b>						
Be aware of cattle and permittees in the fire area. Notify DIVS of any cattle around active fire.						
Areas of resource concern that need to be avoided are marked with white flagging.						
<b>8. Division/Group Communication Summary</b>						
Function	Channel	RX Frequency N/W	RX Tone/NAC	TX Frequency N/W	TX Tone/NAC	Mode
COMMAND	SEE	COMM	PLAN			
<b>9. Prepared By (Resource Unit Leader)</b>			<b>Approved By (Planning Section Chief)</b>		<b>Date</b>	<b>Time</b>
RICH JAROS			RICH JAROS		07/24/2022	2100

1. INCIDENT NAME	2. OPS PERIOD DATE	START TIME	END TIME	SUNRISE	SUNSET TIME
Halfway Hill Fire	07/25/2022	0700	2000	0624	2048

**3. REMARKS (Safety Notes, Hazards)**  
 ICP Operational Briefing 0600/ Helibase Briefing 0800  
**Call in potential helispot lat/longs to helibase for approval/improvement**  
 All medivacs will be coordinated through Halfway Hill Communications  
 Request aviation needs through Air Attack if over fire or through Fillmore Helibase  
 Be aware of powerlines in canyon corridors and near dip sites  
**Ensure lines are clear before initiating drop sequence**  
**Report # dips by dip site to helibase at the end of each fuel cycle**

**4. READY ALERT AIRCRAFT**  
 Initial Attack:  
 7PJ, 1CK  
**Medivac:**  
 7PJ

**5. AIRSPACE INFORMATION**  
 TFR Notam FDC 2/2724  
 Polygon to 13,000' MSL  
 From: 38°50'37"N 112°23'24"W  
 To: 38°58'53"N 112°19'23"W  
 To: 38°58'30"N 112°05'39"W  
 To: 38°50'18"N 112°07'27"W  
 Contact Frequency: 133.9750

6. PERSONNEL	NAME	PHONE #	7. FREQUENCIES	VHF-AM	VHF-FM
Air Operations POC/Helicopter Manager N407PJ	Kim Soule	(801) 494-4617	A/A Fixed Wing (TFR)	133.9750	
Helicopter Manager N611CK	Kylie Bronson	(435) 452-1559	A/G Primary		168.4000
Aircraft Desk	Richfield Fire Center	(435) 896-8404	Medivac Air Ambulance VMED 28		155.3400 156.7 Tx Tone
Richfield Airport Manager	Adam Robinson	(435) 896-9413	Local IA Air to Ground A/G 18 A/G 21		168.0125 168.1500

**8. FIXED WING AIRCRAFT**

FAA #	RO #	TY	MAKE/MODEL	BASE	START	AVAILABLE	PERSONNEL	REMARKS

**9. UNMANNED AIRCRAFT SYSTEMS (UAS)**

CALL SIGN	TYPE	MAKE/MODEL	PERSONNEL	REMARKS
Unmanned R31	3	DJI M600	Milton Truong (541) 274-9134 Eric Ogden (541) 880-8554	Lakeview IHC, UAS IR and PSD capable



**10. HELICOPTERS** Codes: C=Cargo P=Passengers B=Bucket SN=Snorkel R=Rappel SH=Short Haul S= Step E=Extraction M=Medical Evacuation H=Hoist EU=Exclusive Use HT=Helitorch

FAA N#	RO #	TY	MAKE/ MODEL	BASE	AVAIL	REMARKS	FAA N#	RO #	TY	MAKE/ MODEL	BASE	AVAIL	REMARKS
N407PJ	A-	3	Beil 407	Richfield Airport	0800	C,P,B,M,EU,HT	N611CK	A-14	1	Sikorsky SH-3H	Richfield Airport	0800	B,EU

**11. PLANNED MISSIONS**

MISSION	START	FROM LOCATION	TO LOCATION	REMARKS
Aerial Supervision	TBD	TBD	Fire	Order through Richfield if needed
Recon	TBD	Richfield Airport	Fire	As requested
Bucket Support	TBD	Richfield Airport	Fire	As requested
Logistical Load Delivery	TBD	Richfield Airport	Fire	As requested
Initial Attack Support	TBD	Richfield Airport	Fire	As requested
Aerial Ignition (UAS PSD)	TBD	Fire	TBD	As requested & prioritized by Ops
IR/Mapping (UAS)	TBD	Fire	TBD	As requested & prioritized by Ops

**12. AVIATION LOCATIONS**

LOCATION	APPROVED	LATITUDE X LONGITUDE	LOCATION	APPROVED	LATITUDE X LONGITUDE
Richfield Airport (RIF)		38°44.643' N x 112°05.579' W	H-20 (Div T)	Type 2	38°54.929' N x 112°08.605' W
H-2 (Div W)	Type 2	38°53.768' N x 112°08.605' W	H-25 (Div T)	Type 2	38°56.073' N x 112°08.010' W
H-5 (Div W)	Type 2	38°53.170' N x 112°17.131' W	H-30 (Div M)	Type 2	38°55.749' N x 112°09.784' W
H-7 (Div W)	Type 2	38°52.430' N x 112°15.181' W	H-35 (Div M)	Type 3	38°56.607' N x 112°11.345' W
H-9 (Div W)	Type 2	38°51.610' N x 112°13.631' W	H-37 (Div M)	Type 3	38°56.852' N x 112°11.955' W
H-10 (Div T)	Type 2	38°51.188' N x 112°13.690' W	H-39 (Div M)	Type 3	38°55.635' N x 112°13.802' W
H-12 (Div T)	Type 2	38°52.409' N x 112°11.398' W	H-40 (Div D)	Type 3	38°56.879' N x 112°14.389' W
H-15 (Div T)	Type 2	38°53.428' N x 112°10.101' W	H-41 (Div D)	Type 3	38°55.552' N x 112°14.413' W
Cargo Site/Heli-torch Base	Type 2	38°57.491' N x 112°17.940' W	H-42 (Div D)	Type 2	38°55.363' N x 112°14.792' W
			H-45 (Div A)	Type 2	38°55.834' N x 112°16.220' W

**Incident:**

**Halfway Hill Fire**

**Date:**

**7/25/2022**

**Operational Period:**

**Day Shift**



**SAFETY MESSAGE**

*Fire fighter safety comes first on every fire, every time*



**MAJOR 215 A HAZARDS AND RISKS**

- |  |  |
|--|--|
| <ul style="list-style-type: none"> <li>• Heat related illnesses</li> <li>• Excessive Heat and Strong Erratic Winds</li> <li>• Driving rough steep winding roads</li> <li>• UTV/ATV use</li> <li>• Heavy Equipment</li> <li>• Wildlife (Rattle Snakes/Bees/Ticks etc....)</li> <li>• Extremely Dry Fuels, Erratic fire behavior</li> <li>• Short/Long range spotting</li> </ul> | <ul style="list-style-type: none"> <li>• Air Operations</li> <li>• Rolling material on steep slopes</li> <li>• Steep rocky, rough terrain -falls/slips</li> <li>• COVID-Physical Distancing</li> <li>• Food Consumption-eat within two hours</li> <li>• Hazard Trees and Chain saw Operations</li> <li>• Personal Hygiene- Sanitize twice daily</li> </ul> |
|--|--|

**A PROCEDURAL APPROACH TO SAFETY**

In a fire situation there are subjective hazards that we as firefighters create, and there are objective hazards such as fire entrapment, snags, rolling debris, and terrain that are inherent to firefighting. The subjective hazards we have control over just by using our attitudes and abilities. The objective hazards we cannot eliminate. The possibility of injury or entrapment is always there, the probability may be large or small. We must take steps to reduce the risks associated with our actions. By employing the risk management process each operational period, we can minimize exposure to hazards and better ensure our safety.

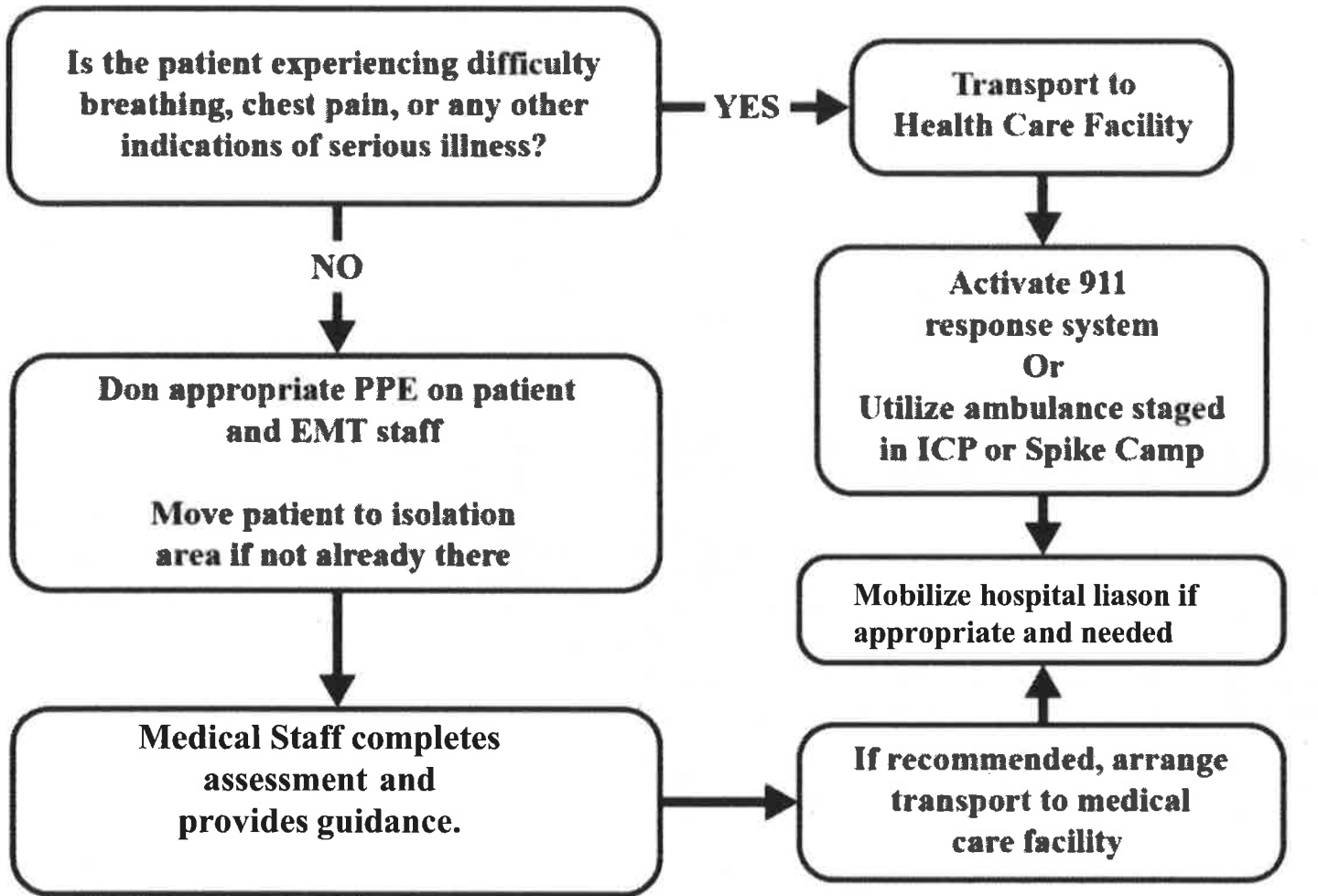
**LOOKOUTS COMMUNICATIONS ESCAPE ROUTES SAFETY ZONES**

**In the wildland fire environment, four basic safety hazards confront the firefighter - lightning, fire-weakened timber, rolling rocks, and entrapment by extreme/running fires. Each firefighter must know the interconnection of LCES - lookouts, communications, escape routes, and safety zones. LCES should be established before fighting the fire: Select lookouts, set up communications, choose escape routes, and establish safety zones**

*Be mindful of where you're working and the associated risk.*

An individual is identified with a possible COVID-19 infection based on the screening tool.

**Cough more than expected? Shortness of breath or difficulty breathing? Fever? Chills? Muscle pain outside your normal for firefighting? Sore throat? New loss of taste or smell? Temperature greater than 100.4?**



### NWCG COVID Screening Tool



<b>Following COVID-19 Test Results options are:</b>
<b>Return to work</b>
<b>Isolate</b>
<b>Demobilization off Incident</b>

# INCIDENT RADIO COMMUNICATIONS PLAN (ICS 205)

Controlled Unclassified Information//Basic

<b>1. Incident Name:</b> HALFWAY HILL	<b>2. Date/Time Prepared:</b> Date: 07/24/2022 Time: 1219	<b>3. Operational Period:</b> Date/Time From: 07/25/2022 0600 Date/Time To: 07/25/2022 2000 DAY: MON MON
--	---	---

**4. Basic Radio Channel Use:**

Zone Group	Ch #	Function	Channel Name/Trunked Radio System Talkgroup	Assignment	RX Freq	RX Tone/NAC	TX Freq	TX Tone/NAC	Mode (A,D, or M)	Remarks
	1	TACTICAL	TAC1	DIV A/D/W	168.0500	123.0	168.0500	123.0	A	DIV A/D/W
	2	TACTICAL	TAC 2	UNASSIGNED	168.2000	123.0	168.2000	123.0	A	UNASSIGNED
	3	TACTICAL	TAC 3	DIV M/T	168.6000	123.0	168.6000	123.0	A	DIV M/T
	4	TACTICAL	TAC 4	UNASSIGNED	166.7250	123.0	166.7250	123.0	A	UNASSIGNED
	5	TACTICAL	TAC 5	UNASSIGNED	166.7750	123.0	166.7750	123.0	A	UNASSIGNED
	6	TACTICAL	TAC 6	UNASSIGNED	168.2500	123.0	168.2500	123.0	A	UNASSIGNED
	7	COMMAND	CMD 7	CMD	170.4500	123.0	168.1000	123.0	A	WHITE PINE PEAK
	8	COMMAND	CMD 8	CMD	169.5375	123.0	164.7125	123.0	A	DEVILS KITCHEN
	10	COMMAND	BLM WHITE PINE	CMD	172.6250	0.0	164.9500	103.5	A	BLM WHITE PINE REPEATER
	11	COMMAND	NOTCH	CMD	172.4375	0.0	166.0000	167.9	A	BLM NOTCH PEAK REPEATER
	12	COMMAND	FS DELTA	CMD	172.2500	0.0	165.0125	123.0	A	FS DELTA REPEATER
	13	AIR TO GROUND	A/G PRI	AIR	168.4000	0.0	168.4000	0.0	A	AIR TO GROUND PRIMARY
	14	AIR TO GROUND	A/G 18	AIR	168.0125	0.0	168.0125	0.0	A	FISHLAKE AIR TO GROUND
	15	AIR TO GROUND	V MED 28	AIR	155.3400	0.0	155.3400	156.7	A	MEDEVAC
	16	AIR GUARD	AIRGUARD	EMERGENCY	168.6250	0.0	168.6250	110.9	A	AIR GUARD

**5. Special Instructions:**

<b>6. Prepared By</b> (Communications Unit Leader)	Name: JOSH CORNELL
Signature:	Date/Time: 07/24/2022 1219

<b>Resource Advisor</b>	<b>Incident Name</b> Halfway Hill	<b>Date/Time Prepared</b> 07/24/2022 18:45	<b>Prepared by</b> TEAM
<b>Staffing</b>	<b>Name</b>		<b>Contact</b>
	Sean Kelly	LEAD READ	RADIO
	Angela Rooker	ARCH	RADIO
	Greg Woodall	ARCH	RADIO
<b>RESOURCE OBJECTIVES &amp; OPERATIONAL EMPHASIS</b>			
HERITAGE/CULTURAL RESOURCES <ul style="list-style-type: none"> <li>Protect cultural resources.</li> </ul> NOXIOUS WEEDS <ul style="list-style-type: none"> <li>Limit the spread of noxious and invasive weed species.</li> </ul> SUPPRESSION REPAIR <ul style="list-style-type: none"> <li>Repair suppression related impacts on the fire.</li> </ul>			
<b>RESOURCE PROTECTION STANDARDS</b>			
<b>Heritage &amp; Cultural – Standards</b>			<b>Division/Area</b>
✓ All cultural resources and human remains are protected. <u>Please leave them in place – no collecting.</u> Please coordinate with the Agency Administrator if cultural resources are found.			All
<b>Noxious Weeds – Standards</b>			
✓ WEED WASH: All resources demobilizing from the fire will go through the weed wash before leaving the incident. Weed wash location has been established			All
<b>Suppression Repair - Standards</b>			
✓ GENERAL: Follow the suppression repair standards provided in the Suppression Repair Plan and as outlined below. Limit further soil disturbance.			All
✓ DOZER LINES: <ul style="list-style-type: none"> <li>Pull berms and associated material back into the bladed area. Re-contour as possible.</li> <li>As able, spread the brush, limbs, rocks or sod back across the exposed soils of the fireline.</li> <li>Discourage off-road travel on dozer lines by ripping the soil or placing boulders, logs, or other natural features on dozer lines where they tie into established roads.</li> <li>Remove material from ephemeral drainages. Avoid pushing sediment into draws, wet areas, or waterways.</li> </ul>			
✓ HANDLINE <ul style="list-style-type: none"> <li>Remove "cup trenches" on perimeter line.</li> <li>As possible, pull back berms, topsoil, and organic debris to blend with adjacent undisturbed ground.</li> </ul>			
✓ SLASH PILES <ul style="list-style-type: none"> <li>Disperse slash piles along roads and other features to limit the concentration of fuels.</li> </ul>			
✓ DROP POINTS/STAGING AREAS/HELISPOTS/DIP SITES/SPIKE CAMPS <ul style="list-style-type: none"> <li>Remove all trash and debris, backhaul all unused supplies.</li> <li>In areas where tress or shrubs were cut or cleared, pull slash back in to minimize visibility.</li> <li>In areas with excessive soil disturbance reseed if determined necessary by a resource advisor.</li> </ul>			
<b>Suppression Repair - SPECIFICS</b>			
✓ REMAINING DOZER LINE IN ALPHA – SENSITIVE SEGMENT: <ul style="list-style-type: none"> <li>Using hand tools, pull berms and associated material back into the bladed area. Re-contour as possible, but not outside of the dozer cut.</li> <li>As able, spread the brush, limbs, rocks or sod back across the exposed soils of the fireline.</li> </ul>			Alpha, Delta, All
✓ SLASH PILES <ul style="list-style-type: none"> <li>Disperse slash piles along roads and other features to limit the concentration of fuels.</li> </ul>			

# HALFWAY HILL INCIDENT

UT-SCS-220216

## SUBMITTING TIME

- CTRs and Shift Tickets should be submitted at a minimum, every other day.
- Justifications are required in the remarks when posting Time without meal breaks.
- Hazard Pay is required to be justified in the remarks, such as: "Firefighting on an uncontrolled Fireline."
- The preferred method of turning in CTR's, Shift Tickets, or other associated Time documents is direct to our Finance email: [2022.halfwayhill.finance@firenet.gov](mailto:2022.halfwayhill.finance@firenet.gov).
- Taking a picture of your signed CTR/Shift Ticket is perfectly acceptable.
- If electronic delivery is not an option for you, we will accept hard copies at the Finance yurt.
- Our Finance email does not have an auto reply.

### Fillable PDF CTR/Shift Ticket:

Acceptable PDF's- We provide acceptable templates on the Virtual Documentation page within the IAP. However, we accept any version that is signable and has all of the required fields. Be mindful of what browser you open the PDF in, downloading the PDF form tends to prevent filling and signature issues.

Option 1 - Resource fills out CTR/Shift Ticket and e-mails to supervisor for signature. Supervisor digitally signs CTR then e-mails signed copy back to resource AND resource forwards to Finance: [2022.halfwayhill.finance@firenet.gov](mailto:2022.halfwayhill.finance@firenet.gov).

Option 2 – Resource fills out CTR, supervisor (if comfortable) signs directly on same device. Resource e-mails CTR directly to [2022.halfwayhill.finance@firenet.gov](mailto:2022.halfwayhill.finance@firenet.gov).

### Picture of Hard Copy CTR/Shift Ticket:

Option 1 – Resource fills out hard copy CTR, supervisor signs hard copy. Resource takes a picture of the signed document, reviews picture to ensure it's legible, and emails to Finance: [2022.halfwayhill.finance@firenet.gov](mailto:2022.halfwayhill.finance@firenet.gov).

Option 2 - Resource fills out hard copy CTR, snaps a picture of CTR and e-mails/texts to supervisor. Supervisor digitally signs CTR then e-mails signed copy back to resource AND [2022.halfwayhill.finance@firenet.gov](mailto:2022.halfwayhill.finance@firenet.gov).

### Resources on Demob list:

- Ensure all required documents have been sent to Finance and ensure Time submittals are current.

Contact Finance with any questions: 435-201-9539

## **Halfway Hill Contact List:**

**INFORMATION**                      [2022.halfwayhill@firenet.gov](mailto:2022.halfwayhill@firenet.gov)

**FINANCE**                              [2022.halfwayhill.finance@firenet.gov](mailto:2022.halfwayhill.finance@firenet.gov)

## **Demobilization Process:**

Step 1: All demobing resources will first call or stop by the Demob/check-in window to verify status.

Demob: **435-691-1419**

Step 2: Return any radios or checked-out supplies.

Step 3: Equipment will need to go through weed wash and Ground Support to obtain post inspection.

Step 4: Closeout Time with the Finance Section

Step 5: Once all steps are completed the resource will call or stop by Demob/Check-in for final verification.

<b>MEDICAL PLAN</b>	1. INCIDENT NAME: <b>Halfway Hill</b>	2. DATE PREPARED: <b>7/24/2022</b>	3. TIME PREPARED: <b>2000</b>	4. OPERATIONAL PERIOD <b>7/25/2022 0700-2000</b>			
	<b>5. INCIDENT MEDICAL AID STATIONS</b>						
<b>MEDICAL AID STATIONS</b>		<b>LOCATION</b>			<b>PARAMEDIC</b>		
ICP Med Unit		Tyla Northrup			Yes		
<b>6. TRANSPORTATION</b>							
<b>A. Ambulance Services</b>							
<b>NAME</b>		<b>LOCATION</b>		<b>PHONE</b>		<b>PARAMEDIC</b>	
East Millard Ambulance (AEMT)		Fillmore, Utah		911		No	
Sevier County EMS		Richfield, Utah		(435) 896-6471		No	
<b>AIR AMBULANCE SERVICES</b>							
Life Flight Network		Provo, Utah		911		Yes	
Air Med		Nephi, Utah		911		Yes	
<b>B. Incident Resources</b>							
<b>NAME</b>		<b>LOCATION</b>			<b>PARAMEDIC</b>		
Steve Wolfstich	EMPF/ALS KIT/4X4 Vehicle	A/D/W			Yes		
Stephen Procedo	EMPF/ALS Kit/4X4 Vehicle	M/T			Yes		
<b>7. HOSPITALS</b>							
<b>NAME</b>	<b>ADDRESS</b>	<b>TRAVEL TIME</b>		<b>PHONE</b>	<b>TRAUMA</b>	<b>HELIPAD</b>	<b>BURN CENTER</b>
Fillmore Community Hospital (IHC)	674 South Highway 99 Fillmore, Utah	AIR 10 min	GRN 15 min	(435) 743- 5591	LVL 4	Yes	No
Sevier Valley Hospital	1000 North Main Street Richfield, Utah	Air 45 min	GRN3 0 min	(435) 893- 4100	LVL 4	Yes	No
Utah Valley Hospital	1034 North 500 West Provo, Utah	Air 45 min	GRN 1.5 hr	(801) 357- 2130	LVL 2	Yes	No
University Hospital	50 North Medical Drive SLC, Utah	Air 1 hr	GRN2 hr	(801) 583- 5000	LVL 1	Yes	Yes
9. PREPARED BY Tyla Northrup (MEDL)		10. REVIEWED BY Jay Beckstrand (SOFR)					



# MEDICAL PLAN (ICS 206 WF)

Controlled Unclassified Information//Basic

Medical Incident Report					
<b>FOR A NON-EMERGENCY INCIDENT, WORK THROUGH CHAIN OF COMMAND TO REPORT AND TRANSPORT INJURED PERSONNEL AS NECESSARY.</b> <b>FOR A MEDICAL EMERGENCY: IDENTIFY ON SCENE INCIDENT COMMANDER BY NAME AND POSITION AND ANNOUNCE "MEDICAL EMERGENCY" TO INITIATE RESPONSE FROM IMT COMMUNICATIONS/DISPATCH.</b>					
<b>Use the following items to communicate situation to communications/dispatch.</b>					
<b>1. CONTACT COMMUNICATIONS / DISPATCH</b> (Verify correct frequency prior to starting report) <i>Ex: "Communications, Div. Alpha. Stand-by for Emergency Traffic."</i>					
<b>2. INCIDENT STATUS:</b> Provide incident summary (including number of patients) and command structure. <i>Ex: "Communications, I have a Red priority patient, unconscious, struck by a falling tree. Requesting air ambulance to Forest Road 1 at (Lat./Long.) This will be the Trout Meadow Medical, IC is TFLD Jones. EMT Smith is providing medical care."</i>					
Severity of Emergency / Transport Priority	<input type="checkbox"/> <b>RED / PRIORITY 1 Life or limb threatening injury or illness. Evacuation need is IMMEDIATE</b> <i>Ex: Unconscious, difficulty breathing, bleeding severely, 2° – 3° burns more than 4 palm sizes, heat stroke, disoriented.</i> <input type="checkbox"/> <b>YELLOW / PRIORITY 2 Serious Injury or illness. Evacuation may be DELAYED if necessary.</b> <i>Ex: Significant trauma, unable to walk, 2° – 3° burns not more than 1-3 palm sizes.</i> <input type="checkbox"/> <b>GREEN / PRIORITY 3 Minor Injury or illness. Non-Emergency transport</b> <i>Ex: Sprains, strains, minor heat-related illness.</i>				
Nature of Injury or Illness & Mechanism of Injury			Brief Summary of Injury or Illness <i>(Ex: Unconscious, Struck by Falling Tree)</i>		
Transport Request			Air Ambulance / Short Haul / Hoist Ground Ambulance / Other		
Patient Location			Descriptive Location & Lat./Long. (WGS84)		
Incident Name			Geographic Name + "Medical" <i>(Ex: Trout Meadow Medical)</i>		
On-Scene Incident Commander			Name of on-scene IC of Incident within an Incident <i>(Ex: TFLD Jones)</i>		
Patient Care			Name of Care Provider <i>(Ex: EMT Smith)</i>		
<b>3. INITIAL PATIENT ASSESSMENT:</b> <i>Complete this section for each patient as applicable (start with the most severe patient)</i> Patient Assessment: See IRPG PAGE 106 or use Vital Signs Report at right  Treatment:			<b>Great Basin Team 4 Medical Unit: VITAL SIGNS REPORT</b> Age _____ Weight _____  <b>Level of Consciousness:</b> Alert and Oriented to: Person Place Time Event  Responsive to: Verbal Stimulus Pain Stimulus Unresponsive  <b>Breathing:</b> Not Normal Difficult/Labored Rate _____  <b>Pulse Rate:</b> Absent Present: _____/minute  <b>Skin Color:</b> Normal Pale Bluish Red  <b>Skin Moisture:</b> Normal Dry Moist Profuse Sweating  <b>Skin/Body Temp:</b> _____°F Normal Hot Cold Cool  <b>Pupils:</b> Equal and Reactive Unequal Dilated Constricted  <b>Blood Pressure:</b> SYS _____/DIA _____  <b>Oxygen Saturation with Pulse Oximeter (SaO2):</b> _____  <b>Blood Glucose Level:</b> _____		
<b>4. TRANSPORT PLAN:</b> Evacuation Location (if different): (Descriptive Location (drop point, intersection, etc.) or Lat./Long.) Patient's ETA to Evacuation Location:  Helispot / Extraction Site Size and Hazards:					
<b>5. ADDITIONAL RESOURCES / EQUIPMENT NEEDS:</b> <i>Example: Paramedic/EMT, Crews, Immobilization Devices, AED, Oxygen, Trauma Bag, IV/Fluid(s), Splints, Rope rescue, Wheeled litter, HAZMAT, Extrication</i>					
<b>6. COMMUNICATIONS: Identify State Air/Ground EMS Frequencies and Hospital Contacts as applicable</b>					
Function	Channel Name/Number	Receive (RX)	Tone/NAC *	Transmit (TX)	Tone/NAC *
COMMAND					
AIR-TO-GRND					
TACTICAL					
<b>7. CONTINGENCY: Considerations:</b> If primary options fail, what actions can be implemented in conjunction with primary evacuation method? Be thinking ahead.					
<b>8. ADDITIONAL INFORMATION:</b> Updates/Changes, etc.					
<b>REMEMBER:</b> Confirm ETAs of resources ordered. Act according to your level of training. Be Alert. Keep Calm. Think Clearly. Act Decisively.					

07/25/2022

TENTATIVE RELEASE

HALFWAY HILL US-UT-SCS-220216

**OVERHEAD**

**O-62**

**0900**

**(IMET)**

**SEAMAN, MICHAEL PAUL**

07/26/2022

TENTATIVE RELEASE

HALFWAY HILL US-UT-SCS-220216

**CREWS**

C-9            0700                    (CRW1)            LAKEVIEW IHC

**OVERHEAD**

O-57           0700                    (TFLD)            DAY, DAVID R

O-59           0700                    (TFLD)            MILLER, KEN

O-89           0900                    (PTRC)            HARDY, MINDY STARR

