

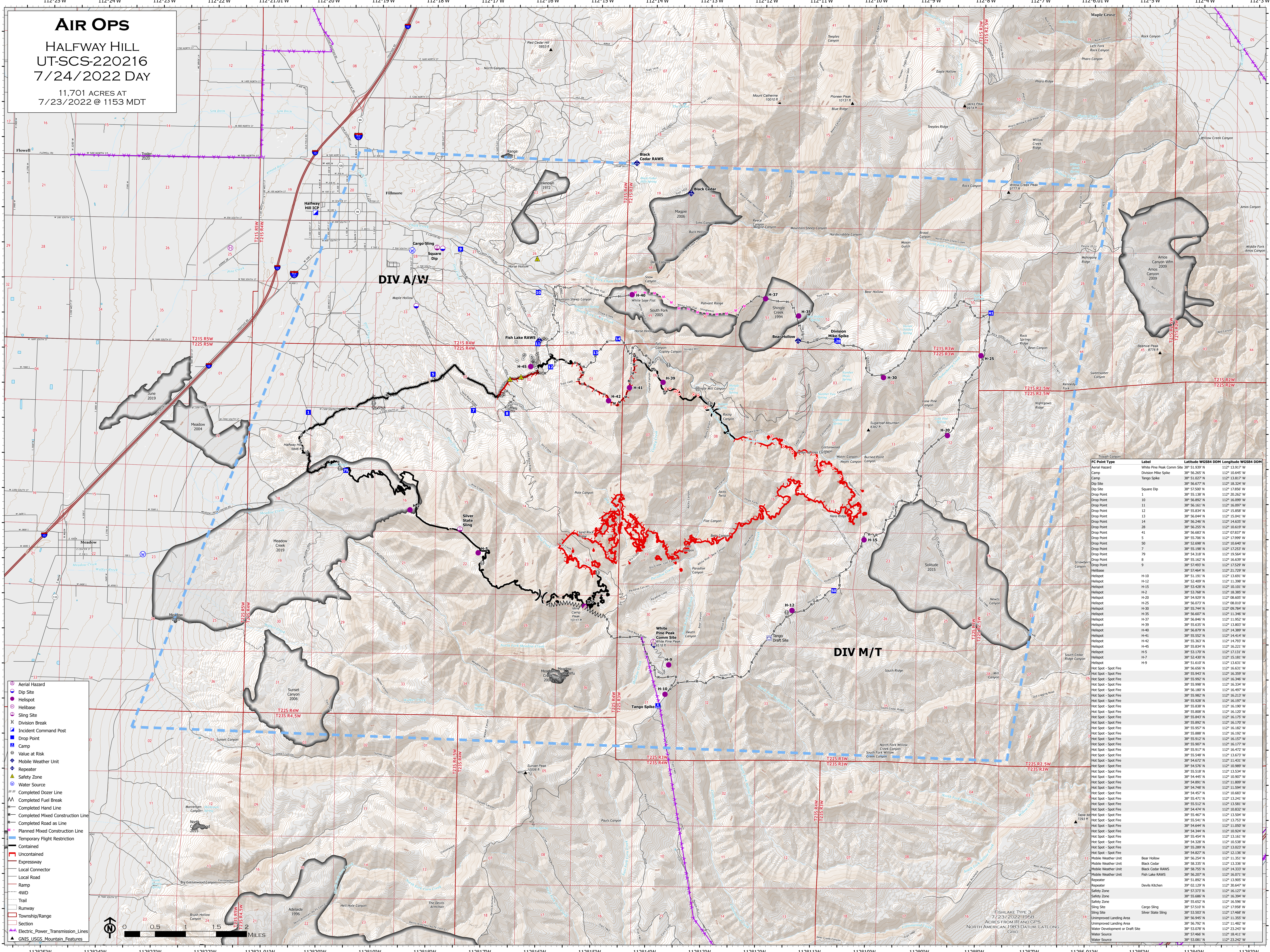
AIR OPS

HALFWAY HILL

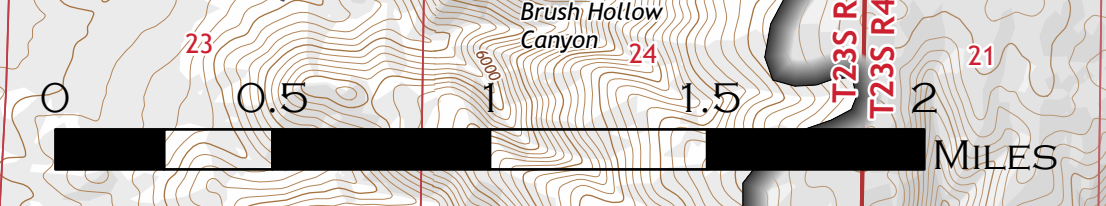
UT-SCS-220216

7/24/2022 DAY

11,701 ACRES AT
7/23/2022 @ 1153 MDT



- Aerial Hazard
- Dip Site
- Helispot
- Helibase
- Sling Site
- Division Break
- Incident Command Post
- Drop Point
- Camp
- Value at Risk
- Mobile Weather Unit
- Repeater
- Safety Zone
- Water Source
- Completed Dozer Line
- Completed Fuel Break
- Completed Hand Line
- Completed Mixed Construction Line
- Completed Road Line
- Planned Mixed Construction Line
- Temporary Flight Restriction
- Contained
- Uncontained
- Expressway
- Local Connector
- Local Road
- Ramp
- 4WD
- Trail
- Runway
- Township/Range
- Section
- Electric Power Transmission Lines
- GNIS USGS Mountain Features



FC Point Type	Label	Latitude WGS84 DDM	Longitude WGS84 DDM
Aerial Hazard	White Pine Peak Comm Site	38° 51.939' N	112° 13.917' W
Camp	Tango Spike	38° 51.027' N	112° 13.817' W
Dip Site	Square Dip	38° 56.077' N	112° 18.320' W
Dip Site	Square Dip	38° 57.500' N	112° 17.850' W
Drop Point	1	38° 55.138' N	112° 20.262' W
Drop Point	10	38° 56.892' N	112° 16.099' W
Drop Point	11	38° 56.541' N	112° 16.897' W
Drop Point	12	38° 55.834' N	112° 15.858' W
Drop Point	13	38° 56.044' N	112° 15.041' W
Drop Point	14	38° 56.246' N	112° 14.635' W
Drop Point	28	38° 56.555' N	112° 16.897' W
Drop Point	41	38° 56.683' N	112° 07.837' W
Drop Point	5	38° 55.700' N	112° 17.999' W
Drop Point	50	38° 52.698' N	112° 16.640' W
Drop Point	7	38° 55.388' N	112° 16.253' W
Drop Point	79	38° 54.318' N	112° 19.564' W
Drop Point	8	38° 55.162' N	112° 16.639' W
Drop Point	9	38° 57.493' N	112° 17.529' W
Helispot	H-10	38° 57.644' N	112° 13.757' W
Helispot	H-12	38° 51.191' N	112° 13.691' W
Helispot	H-15	38° 52.409' N	112° 11.398' W
Helispot	H-20	38° 53.428' N	112° 10.101' W
Helispot	H-25	38° 53.788' N	112° 16.388' W
Helispot	H-30	38° 54.509' N	112° 08.605' W
Helispot	H-35	38° 56.073' N	112° 08.010' W
Helispot	H-37	38° 55.744' N	112° 09.798' W
Helispot	H-39	38° 56.007' N	112° 11.340' W
Helispot	H-40	38° 56.846' N	112° 11.952' W
Helispot	H-41	38° 55.635' N	112° 13.800' W
Helispot	H-42	38° 56.879' N	112° 14.389' W
Helispot	H-44	38° 55.822' N	112° 14.454' W
Helispot	H-45	38° 55.363' N	112° 14.793' W
Helispot	H-9	38° 55.834' N	112° 16.221' W
Helispot	H-5	38° 53.170' N	112° 17.131' W
Hot Spot - Spot Fire	H-1	38° 52.322' N	112° 16.181' W
Hot Spot - Spot Fire	H-2	38° 55.957' N	112° 16.182' W
Hot Spot - Spot Fire	H-3	38° 55.888' N	112° 16.192' W
Hot Spot - Spot Fire	H-4	38° 55.912' N	112° 16.157' W
Hot Spot - Spot Fire	H-6	38° 55.907' N	112° 16.177' W
Hot Spot - Spot Fire	H-7	38° 55.917' N	112° 16.472' W
Hot Spot - Spot Fire	H-8	38° 55.548' N	112° 13.672' W
Hot Spot - Spot Fire	H-11	38° 54.672' N	112° 11.431' W
Hot Spot - Spot Fire	H-13	38° 54.244' N	112° 11.989' W
Hot Spot - Spot Fire	H-14	38° 55.518' N	112° 13.534' W
Hot Spot - Spot Fire	H-16	38° 54.445' N	112° 10.907' W
Hot Spot - Spot Fire	H-17	38° 54.891' N	112° 11.809' W
Hot Spot - Spot Fire	H-18	38° 54.948' N	112° 11.594' W
Hot Spot - Spot Fire	H-19	38° 54.572' N	112° 10.683' W
Hot Spot - Spot Fire	H-21	38° 55.471' N	112° 13.241' W
Hot Spot - Spot Fire	H-22	38° 55.512' N	112° 13.381' W
Hot Spot - Spot Fire	H-23	38° 54.914' N	112° 11.136' W
Hot Spot - Spot Fire	H-24	38° 55.467' N	112° 13.504' W
Hot Spot - Spot Fire	H-26	38° 55.541' N	112° 13.753' W
Hot Spot - Spot Fire	H-27	38° 54.644' N	112° 11.050' W
Hot Spot - Spot Fire	H-28	38° 54.244' N	112° 11.359' W
Hot Spot - Spot Fire	H-29	38° 55.454' N	112° 13.161' W
Hot Spot - Spot Fire	H-31	38° 54.328' N	112° 10.538' W
Hot Spot - Spot Fire	H-32	38° 54.827' N	112° 11.136' W
Hot Spot - Spot Fire	H-33	38° 55.289' N	112° 10.022' W
Mobile Weather Unit	Bear Hollow	38° 54.948' N	112° 11.551' W
Mobile Weather Unit	Black Cedar	38° 58.335' N	112° 13.336' W
Mobile Weather Unit	Black Cedar RAWS	38° 58.755' N	112° 14.333' W
Mobile Weather Unit	Fish Lake RAWS	38° 56.077' N	112° 16.071' W
Repeater	Devis Kitchen	38° 51.892' N	112° 13.905' W
Repeater	Devis Kitchen	39° 02.129' N	112° 30.647' W
Safety Zone	Safety Zone	38° 57.373' N	112° 16.127' W
Safety Zone	Safety Zone	38° 55.688' N	112° 16.394' W
Safety Zone	Safety Zone	38° 55.652' N	112° 16.596' W
Sling Site	Sling Site	38° 57.510' N	112° 17.958' W
Sling Site	Sling Site	38° 53.503' N	112° 17.468' W
Unimproved Landing Area	Unimproved Landing Area	38° 56.845' N	112° 11.359' W
Unimproved Landing Area	Unimproved Landing Area	38° 56.792' N	112° 11.482' W
Water Development or Draft Site	Water Development or Draft Site	38° 53.078' N	112° 23.243' W
Water Source	Water Source	38° 57.466' N	112° 18.411' W
Water Source	Water Source	38° 51.681' N	112° 23.242' W

FISHLAKE TYPE 3
7/23/2022 10:58
ACRES FROM IR AND GPS
NORTH AMERICAN 1983 DATUM, LATLONG
GRID