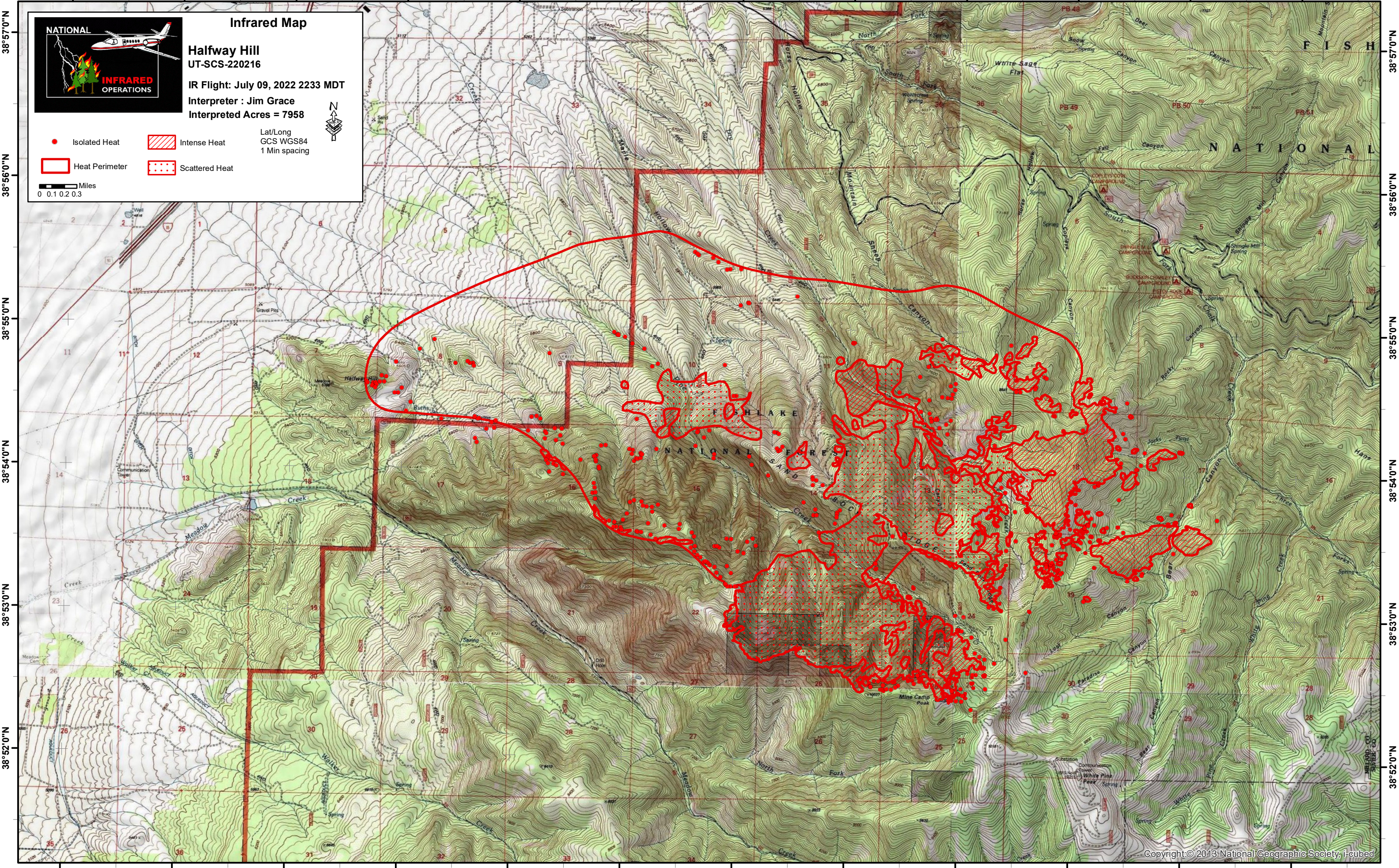



112°23'0"W 112°22'0"W 112°21'0"W 112°20'0"W 112°19'0"W 112°18'0"W 112°17'0"W 112°16'0"W 112°15'0"W 112°14'0"W 112°13'0"W 112°12'0"W



38°57'0"N  
38°56'0"N  
38°55'0"N  
38°54'0"N  
38°53'0"N  
38°52'0"N

38°57'0"N  
38°56'0"N  
38°55'0"N  
38°54'0"N  
38°53'0"N  
38°52'0"N

**NATIONAL**  
  
**INFRARED OPERATIONS**

**Infrared Map**  
**Halfway Hill**  
 UT-SCS-220216  
 IR Flight: July 09, 2022 2233 MDT  
 Interpreter : Jim Grace  
 Interpreted Acres = 7958

● Isolated Heat    ▨ Intense Heat  
 □ Heat Perimeter    ▤ Scattered Heat

Lat/Long  
 GCS WGS84  
 1 Min spacing

0 0.1 0.2 0.3 Miles

