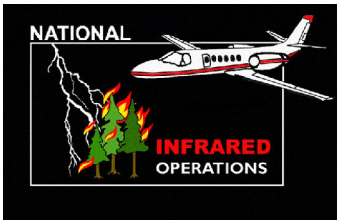


112°23'0"W 112°22'0"W 112°21'0"W 112°20'0"W 112°19'0"W 112°18'0"W 112°17'0"W 112°16'0"W 112°15'0"W 112°14'0"W 112°13'0"W 112°12'0"W

38°57'0"N  
38°56'0"N  
38°55'0"N  
38°54'0"N  
38°53'0"N  
38°52'0"N

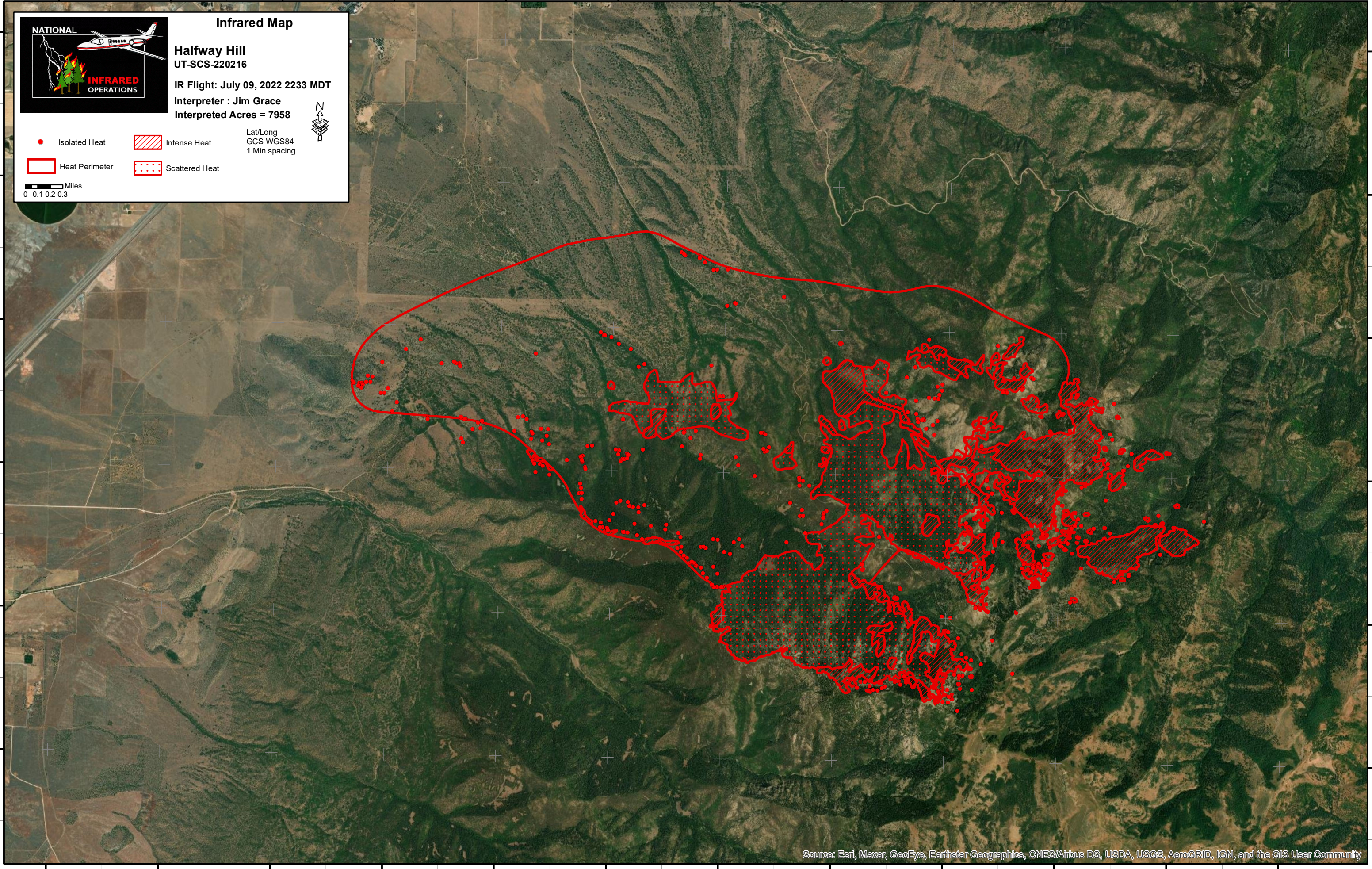
38°57'0"N  
38°56'0"N  
38°55'0"N  
38°54'0"N  
38°53'0"N  
38°52'0"N



**Infrared Map**  
**Halfway Hill**  
UT-SCS-220216  
IR Flight: July 09, 2022 2233 MDT  
Interpreter : Jim Grace  
Interpreted Acres = 7958

Isolated Heat	Intense Heat	Lat/Long GCS WGS84 1 Min spacing
Heat Perimeter	Scattered Heat	

Miles  
0 0.1 0.2 0.3



Source: Esri, Maxar, GeoEye, Earthstar Geographics, CNES/Airbus DS, USDA, USGS, AeroGRID, IGN, and the GIS User Community

112°23'0"W 112°22'0"W 112°21'0"W 112°20'0"W 112°19'0"W 112°18'0"W 112°17'0"W 112°16'0"W 112°15'0"W 112°14'0"W 112°13'0"W 112°12'0"W