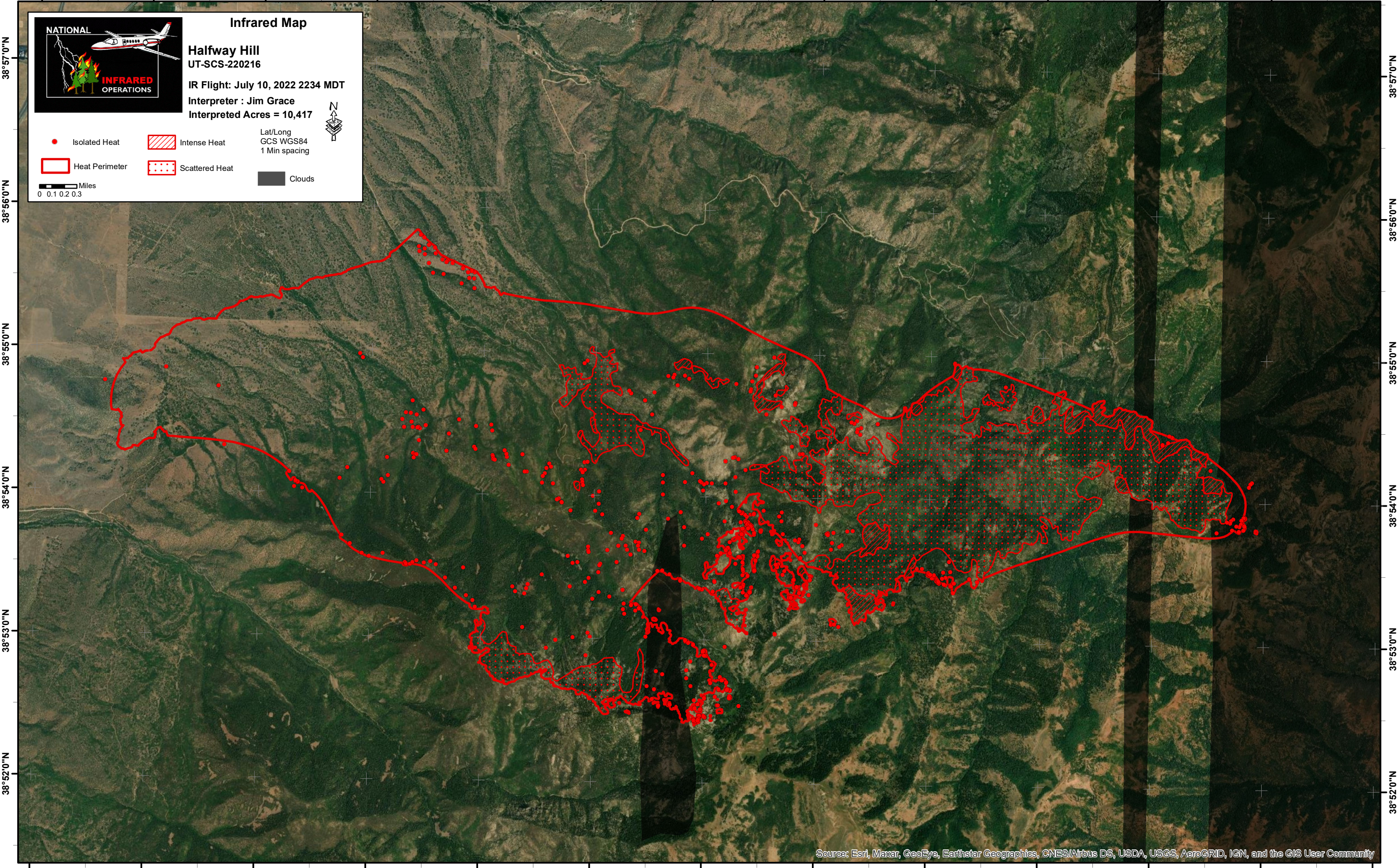


112°21'0"W 112°20'0"W 112°19'0"W 112°18'0"W 112°17'0"W 112°16'0"W 112°15'0"W 112°14'0"W 112°13'0"W 112°12'0"W 112°11'0"W 112°10'0"W



NATIONAL INFRARED OPERATIONS

Infrared Map

Halfway Hill
UT-SCS-220216

IR Flight: July 10, 2022 2234 MDT
Interpreter : Jim Grace
Interpreted Acres = 10,417

● Isolated Heat ▨ Intense Heat Lat/Long
GCS WGS84
1 Min spacing

▭ Heat Perimeter ▤ Scattered Heat ☐ Clouds

0 0.1 0.2 0.3 Miles

38°57'0"N
38°56'0"N
38°55'0"N
38°54'0"N
38°53'0"N
38°52'0"N

38°57'0"N
38°56'0"N
38°55'0"N
38°54'0"N
38°53'0"N
38°52'0"N

112°21'0"W 112°20'0"W 112°19'0"W 112°18'0"W 112°17'0"W 112°16'0"W 112°15'0"W 112°14'0"W 112°13'0"W 112°12'0"W 112°11'0"W 112°10'0"W 112°9'0"W

Source: Esri, Maxar, GeoEye, Earthstar Geographics, CNES/Airbus DS, USDA, USGS, AeroGRID, IGN, and the GIS User Community