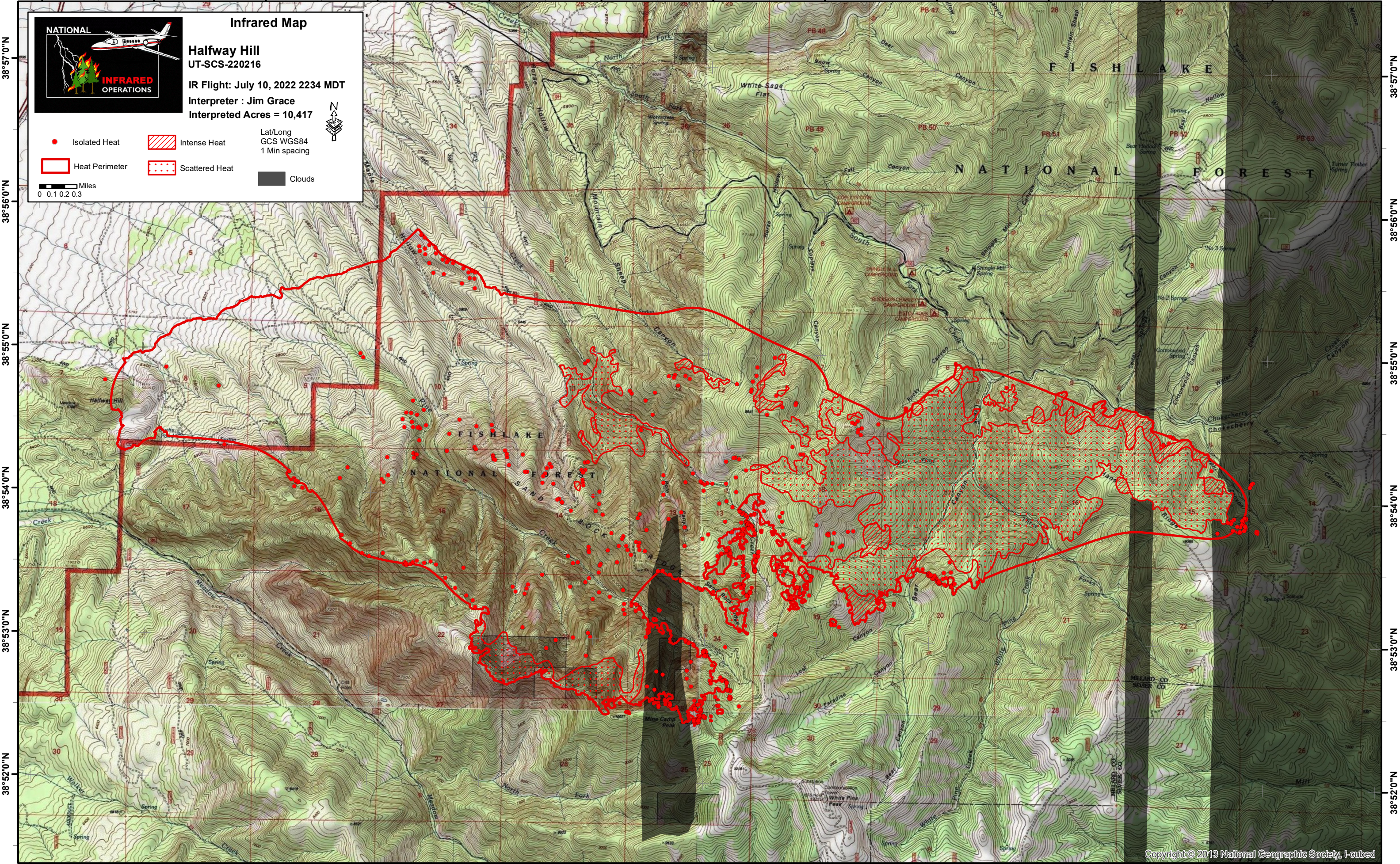


112°21'0"W 112°20'0"W 112°19'0"W 112°18'0"W 112°17'0"W 112°16'0"W 112°15'0"W 112°14'0"W 112°13'0"W 112°12'0"W 112°11'0"W 112°10'0"W



Infrared Map

NATIONAL

INFRARED OPERATIONS

Halfway Hill
 UT-SCS-220216

IR Flight: July 10, 2022 2234 MDT
 Interpreter : Jim Grace
 Interpreted Acres = 10,417

● Isolated Heat
 ■ Intense Heat
 □ Heat Perimeter
 ● Scattered Heat
 ■ Clouds

Lat/Long
 GCS WGS84
 1 Min spacing

0 0.1 0.2 0.3 Miles

Scale bar showing 0, 0.1, 0.2, and 0.3 miles.

112°21'0"W 112°20'0"W 112°19'0"W 112°18'0"W 112°17'0"W 112°16'0"W 112°15'0"W 112°14'0"W 112°13'0"W 112°12'0"W 112°11'0"W 112°10'0"W 112°9'0"W

38°57'0"N
38°56'0"N
38°55'0"N
38°54'0"N
38°53'0"N
38°52'0"N

38°57'0"N
38°56'0"N
38°55'0"N
38°54'0"N
38°53'0"N
38°52'0"N