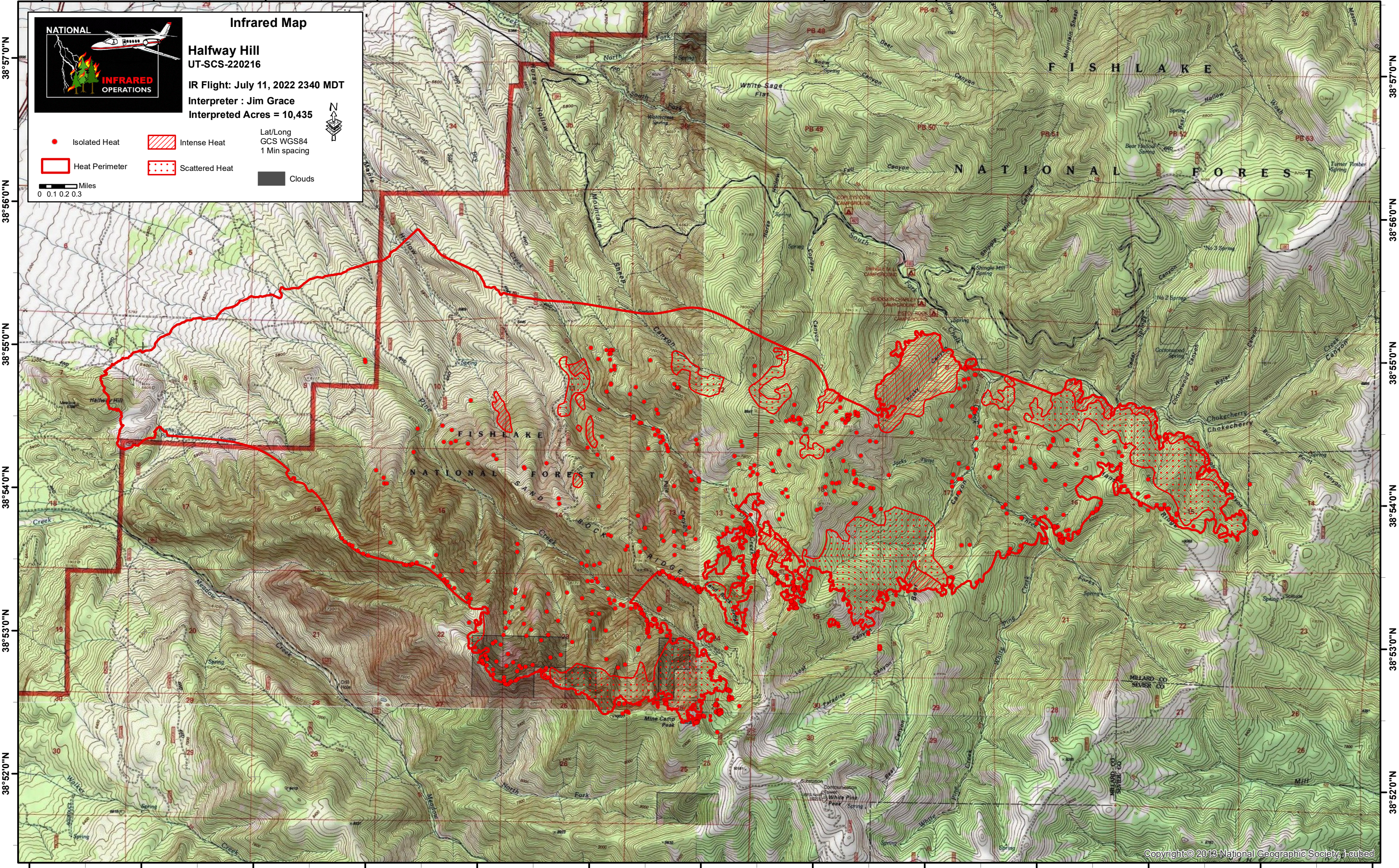


112°21'0"W 112°20'0"W 112°19'0"W 112°18'0"W 112°17'0"W 112°16'0"W 112°15'0"W 112°14'0"W 112°13'0"W 112°12'0"W 112°11'0"W 112°10'0"W



Infrared Map

Halfway Hill
UT-SCS-220216

IR Flight: July 11, 2022 2340 MDT
Interpreter : Jim Grace
Interpreted Acres = 10,435

Lat/Long
GCS WGS84
1 Min spacing

● Isolated Heat Intense Heat Clouds
 Heat Perimeter Scattered Heat

0 0.1 0.2 0.3 Miles

112°21'0"W 112°20'0"W 112°19'0"W 112°18'0"W 112°17'0"W 112°16'0"W 112°15'0"W 112°14'0"W 112°13'0"W 112°12'0"W 112°11'0"W 112°10'0"W 112°9'0"W

38°57'0"N
38°56'0"N
38°55'0"N
38°54'0"N
38°53'0"N
38°52'0"N

38°57'0"N
38°56'0"N
38°55'0"N
38°54'0"N
38°53'0"N
38°52'0"N