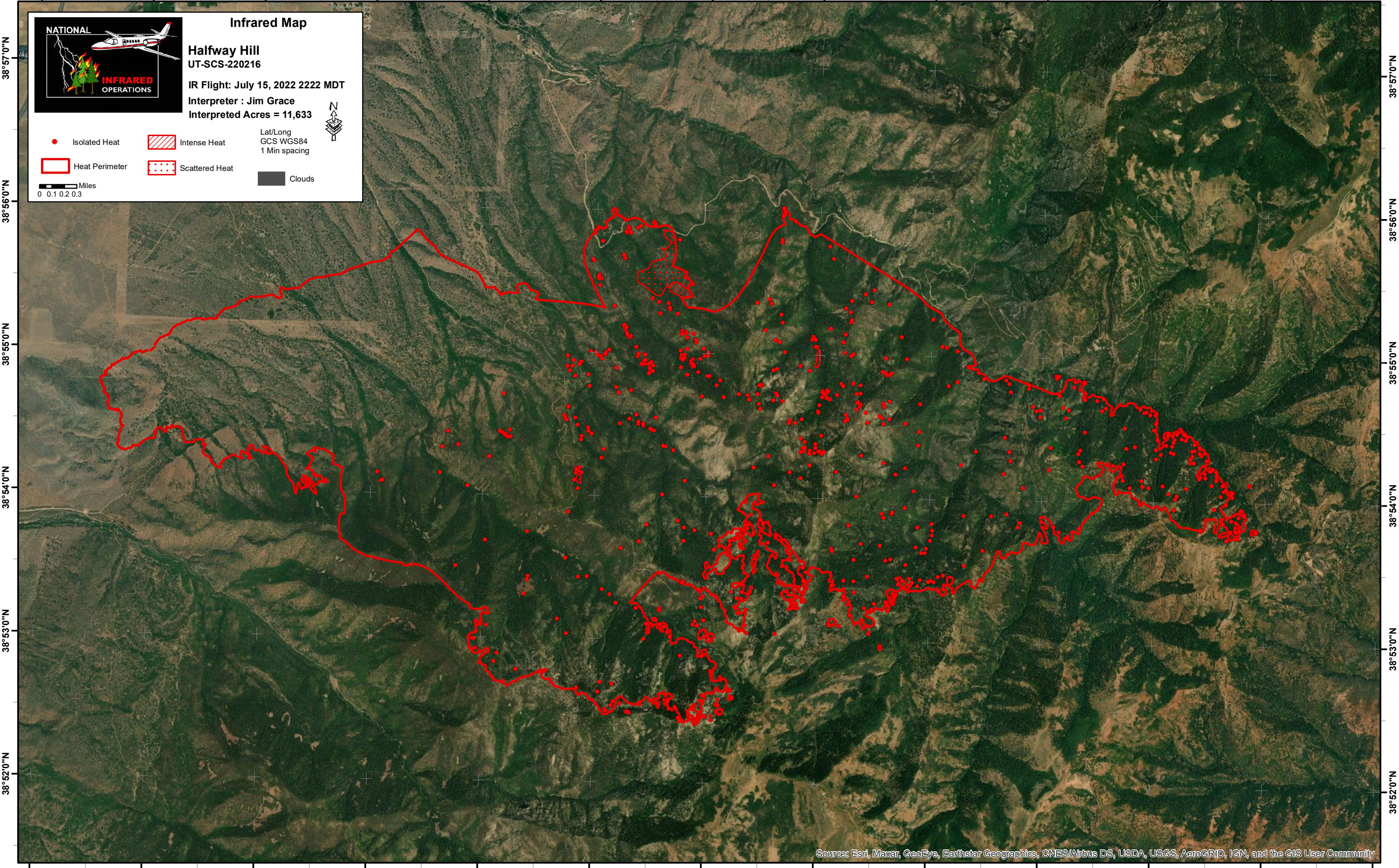


112°21'0"W 112°20'0"W 112°19'0"W 112°18'0"W 112°17'0"W 112°16'0"W 112°15'0"W 112°14'0"W 112°13'0"W 112°12'0"W 112°11'0"W 112°10'0"W



**NATIONAL INFRARED OPERATIONS**

**Infrared Map**

**Halfway Hill**  
UT-SCS-220216

IR Flight: July 15, 2022 2222 MDT  
Interpreter : Jim Grace  
Interpreted Acres = 11,633

● Isolated Heat    ▨ Intense Heat    Lat/Long  
GCS WGS84  
1 Min spacing

▭ Heat Perimeter    ▤ Scattered Heat    ☐ Clouds

0 0.1 0.2 0.3 Miles

38°57'0"N  
38°56'0"N  
38°55'0"N  
38°54'0"N  
38°53'0"N  
38°52'0"N

38°57'0"N  
38°56'0"N  
38°55'0"N  
38°54'0"N  
38°53'0"N  
38°52'0"N

112°21'0"W 112°20'0"W 112°19'0"W 112°18'0"W 112°17'0"W 112°16'0"W 112°15'0"W 112°14'0"W 112°13'0"W 112°12'0"W 112°11'0"W 112°10'0"W 112°9'0"W

Source: Esri, Maxar, GeoEye, Earthstar Geographics, CNES/Airbus DS, USDA, USGS, AeroGRID, IGN, and the GIS User Community