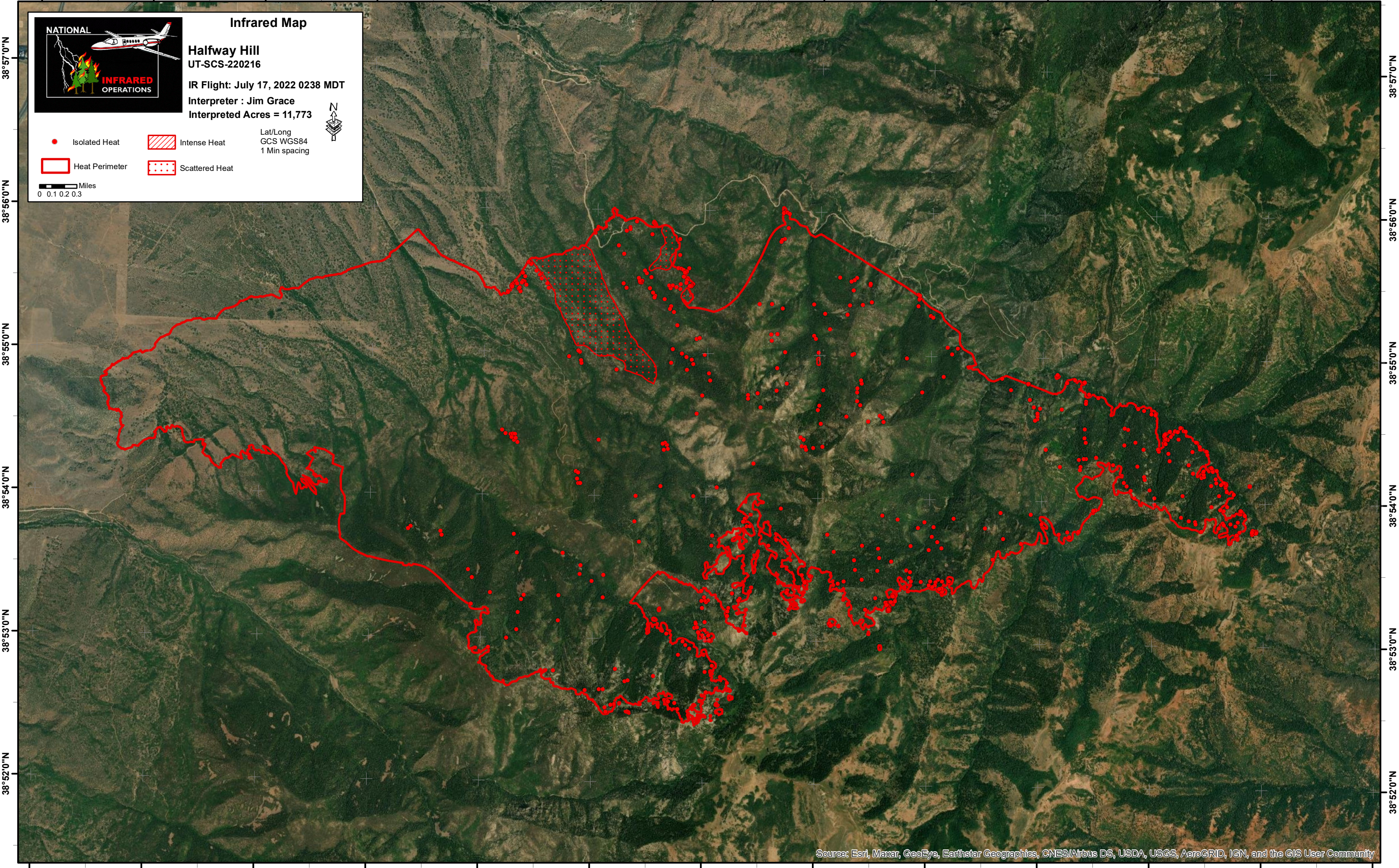


112°21'0"W 112°20'0"W 112°19'0"W 112°18'0"W 112°17'0"W 112°16'0"W 112°15'0"W 112°14'0"W 112°13'0"W 112°12'0"W 112°11'0"W 112°10'0"W



38°57'0"N
38°56'0"N
38°55'0"N
38°54'0"N
38°53'0"N
38°52'0"N

38°57'0"N
38°56'0"N
38°55'0"N
38°54'0"N
38°53'0"N
38°52'0"N

Infrared Map

NATIONAL INFRARED OPERATIONS

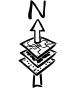
Halfway Hill
UT-SCS-220216

IR Flight: July 17, 2022 0238 MDT
Interpreter : Jim Grace
Interpreted Acres = 11,773

● Isolated Heat ▨ Intense Heat Lat/Long
GCS WGS84
1 Min spacing

▭ Heat Perimeter ▤ Scattered Heat

0 0.1 0.2 0.3 Miles



112°21'0"W 112°20'0"W 112°19'0"W 112°18'0"W 112°17'0"W 112°16'0"W 112°15'0"W 112°14'0"W 112°13'0"W 112°12'0"W 112°11'0"W 112°10'0"W 112°9'0"W