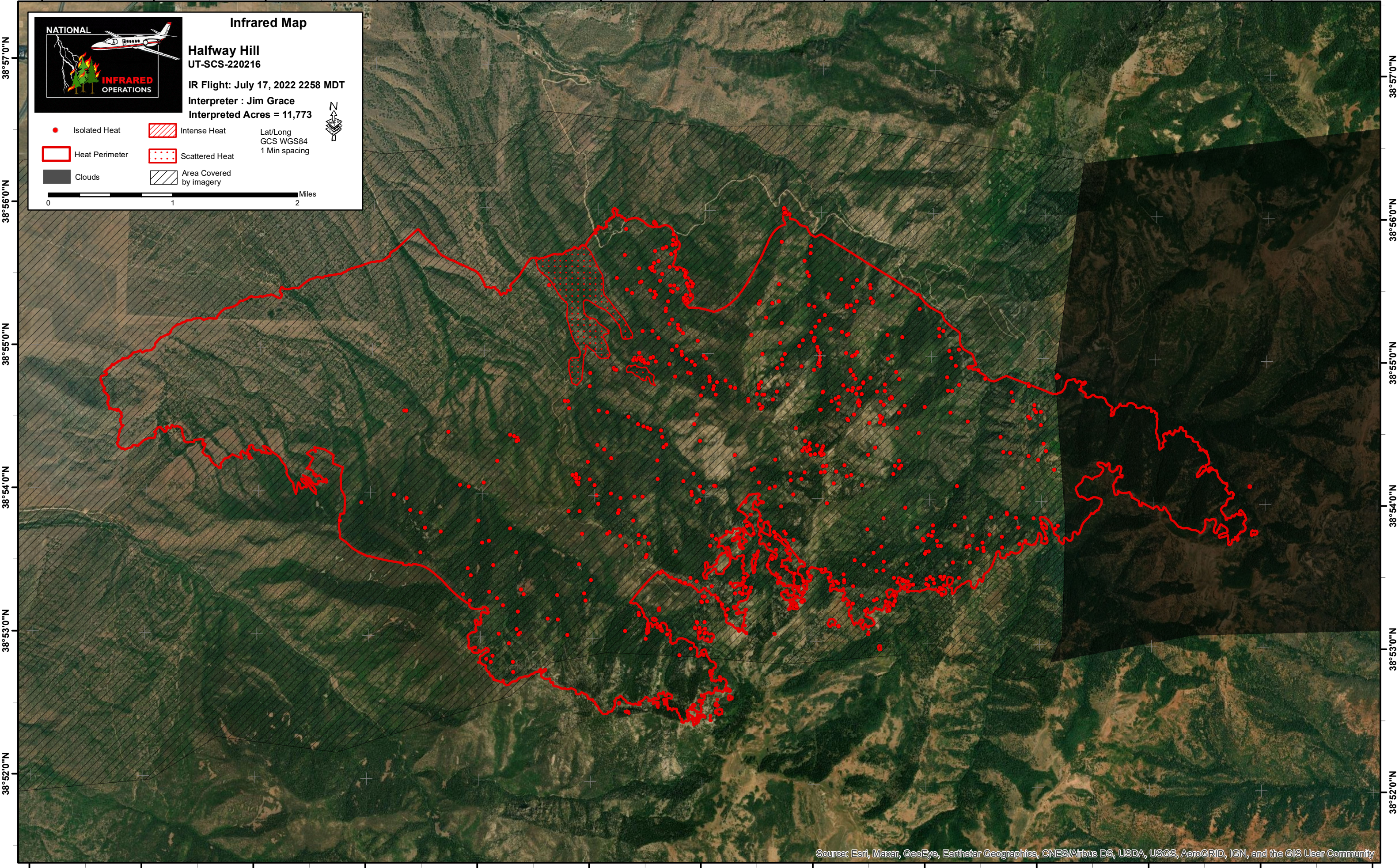


112°21'0"W 112°20'0"W 112°19'0"W 112°18'0"W 112°17'0"W 112°16'0"W 112°15'0"W 112°14'0"W 112°13'0"W 112°12'0"W 112°11'0"W 112°10'0"W



**Infrared Map**  
**Halfway Hill**  
**UT-SCS-220216**  
IR Flight: July 17, 2022 2258 MDT  
Interpreter : Jim Grace  
Interpreted Acres = 11,773

Isolated Heat	Intense Heat	Lat/Long GCS WGS84 1 Min spacing
Heat Perimeter	Scattered Heat	
Clouds	Area Covered by imagery	

0 1 2 Miles

38°57'0"N  
38°56'0"N  
38°55'0"N  
38°54'0"N  
38°53'0"N  
38°52'0"N

38°57'0"N  
38°56'0"N  
38°55'0"N  
38°54'0"N  
38°53'0"N  
38°52'0"N