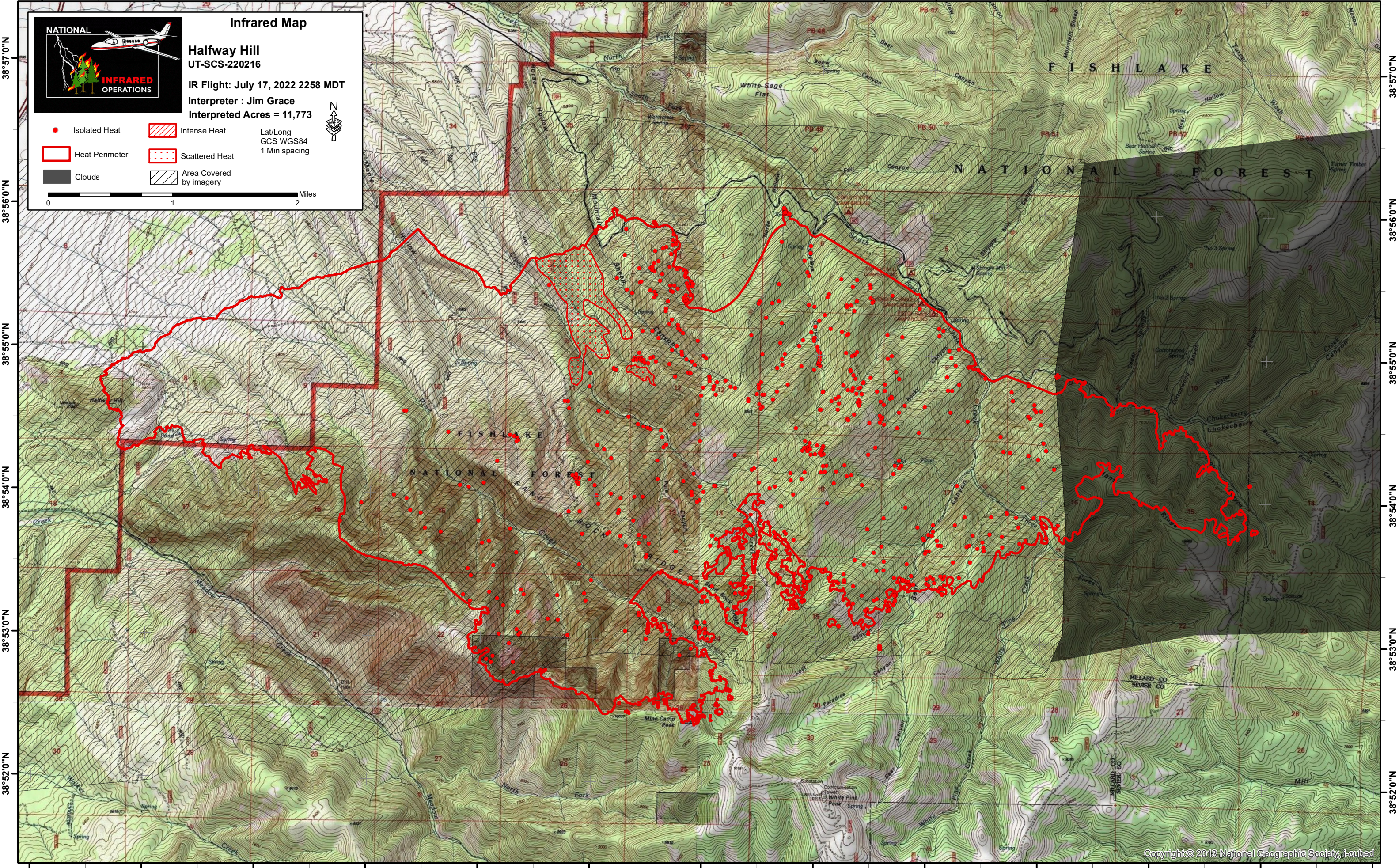


112°21'0"W 112°20'0"W 112°19'0"W 112°18'0"W 112°17'0"W 112°16'0"W 112°15'0"W 112°14'0"W 112°13'0"W 112°12'0"W 112°11'0"W 112°10'0"W



Infrared Map

NATIONAL

INFRARED OPERATIONS

Halfway Hill
 UT-SCS-220216

IR Flight: July 17, 2022 2258 MDT
 Interpreter : Jim Grace
 Interpreted Acres = 11,773

Lat/Long
 GCS WGS84
 1 Min spacing

Isolated Heat
 Intense Heat
 Heat Perimeter
 Clouds
 Scattered Heat
 Area Covered by imagery

0 1 2 Miles

38°57'0"N
 38°56'0"N
 38°55'0"N
 38°54'0"N
 38°53'0"N
 38°52'0"N

112°21'0"W 112°20'0"W 112°19'0"W 112°18'0"W 112°17'0"W 112°16'0"W 112°15'0"W 112°14'0"W 112°13'0"W 112°12'0"W 112°11'0"W 112°10'0"W 112°9'0"W