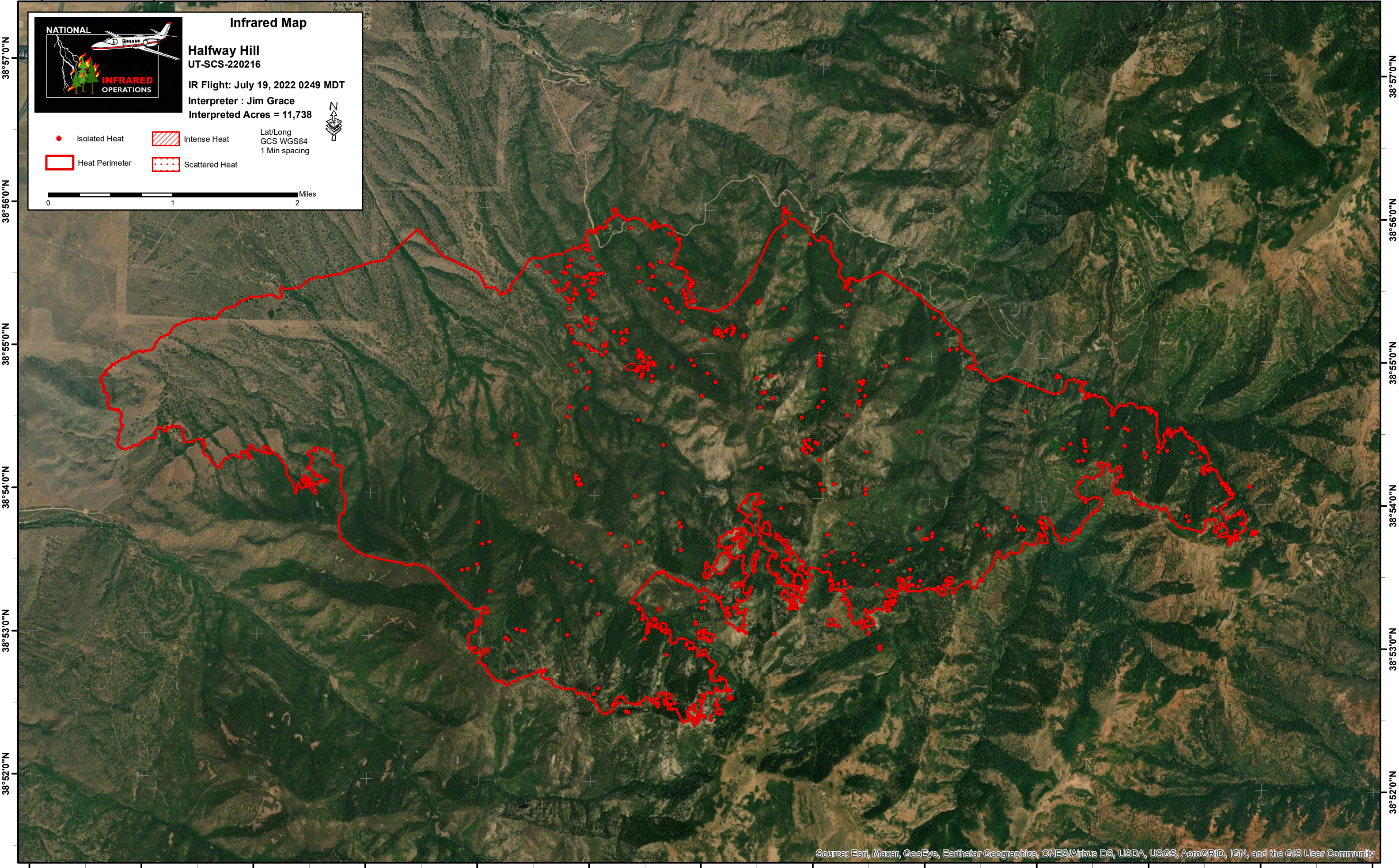


112°21'0"W 112°20'0"W 112°19'0"W 112°18'0"W 112°17'0"W 112°16'0"W 112°15'0"W 112°14'0"W 112°13'0"W 112°12'0"W 112°11'0"W 112°10'0"W



NATIONAL INFRARED OPERATIONS

Infrared Map

Halfway Hill
UT-SCS-220216

IR Flight: July 19, 2022 0249 MDT

Interpreter : Jim Grace

Interpreted Acres = 11,738

● Isolated Heat ▨ Intense Heat Lat/Long
 □ Heat Perimeter ▤ Scattered Heat GCS WGS84
 1 Min spacing

0 1 2 Miles

Scale bar and north arrow.

38°57'0"N
38°56'0"N
38°55'0"N
38°54'0"N
38°53'0"N
38°52'0"N

38°57'0"N
38°56'0"N
38°55'0"N
38°54'0"N
38°53'0"N
38°52'0"N

112°21'0"W 112°20'0"W 112°19'0"W 112°18'0"W 112°17'0"W 112°16'0"W 112°15'0"W 112°14'0"W 112°13'0"W 112°12'0"W 112°11'0"W 112°10'0"W 112°9'0"W