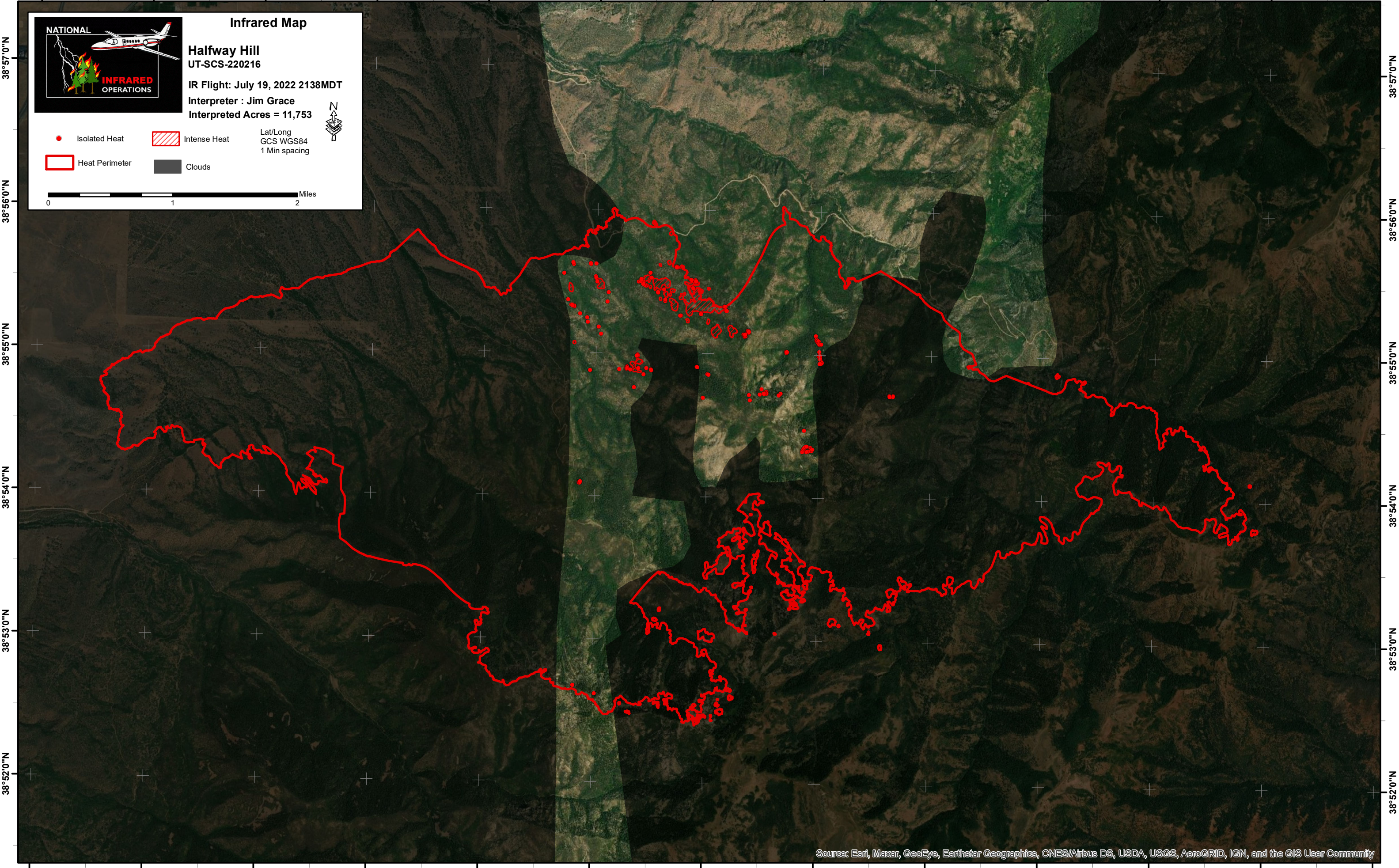


112°21'0"W 112°20'0"W 112°19'0"W 112°18'0"W 112°17'0"W 112°16'0"W 112°15'0"W 112°14'0"W 112°13'0"W 112°12'0"W 112°11'0"W 112°10'0"W



Infrared Map

Halfway Hill
UT-SCS-220216

IR Flight: July 19, 2022 2138MDT
Interpreter : Jim Grace
Interpreted Acres = 11,753

● Isolated Heat Intense Heat Lat/Long
 Heat Perimeter Clouds GCS WGS84
 1 Min spacing

0 1 2 Miles

38°57'0"N

38°56'0"N

38°55'0"N

38°54'0"N

38°53'0"N

38°52'0"N

38°57'0"N

38°56'0"N

38°55'0"N

38°54'0"N

38°53'0"N

38°52'0"N

38°57'0"N

38°56'0"N

38°55'0"N

38°54'0"N

38°53'0"N

38°52'0"N

38°57'0"N

38°56'0"N

38°55'0"N

38°54'0"N

38°53'0"N

38°52'0"N

38°57'0"N

38°56'0"N

38°55'0"N

38°54'0"N

38°53'0"N

38°52'0"N

38°57'0"N

38°56'0"N

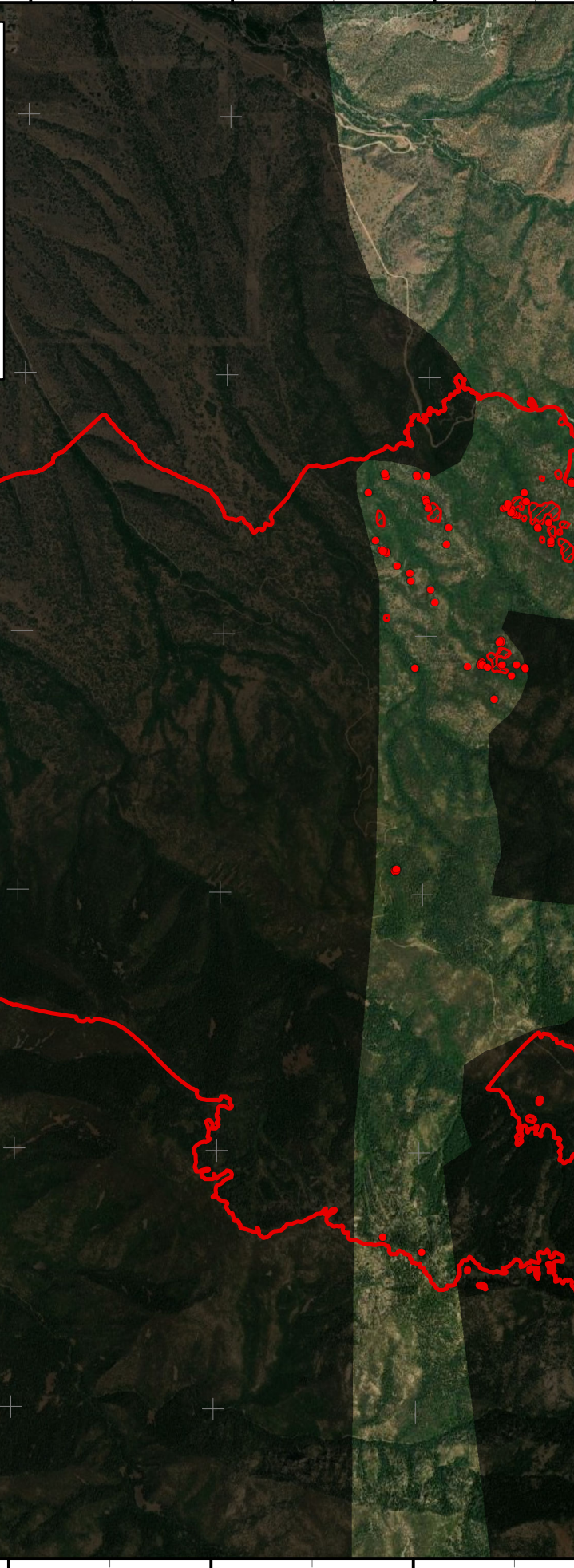
38°55'0"N

38°54'0"N

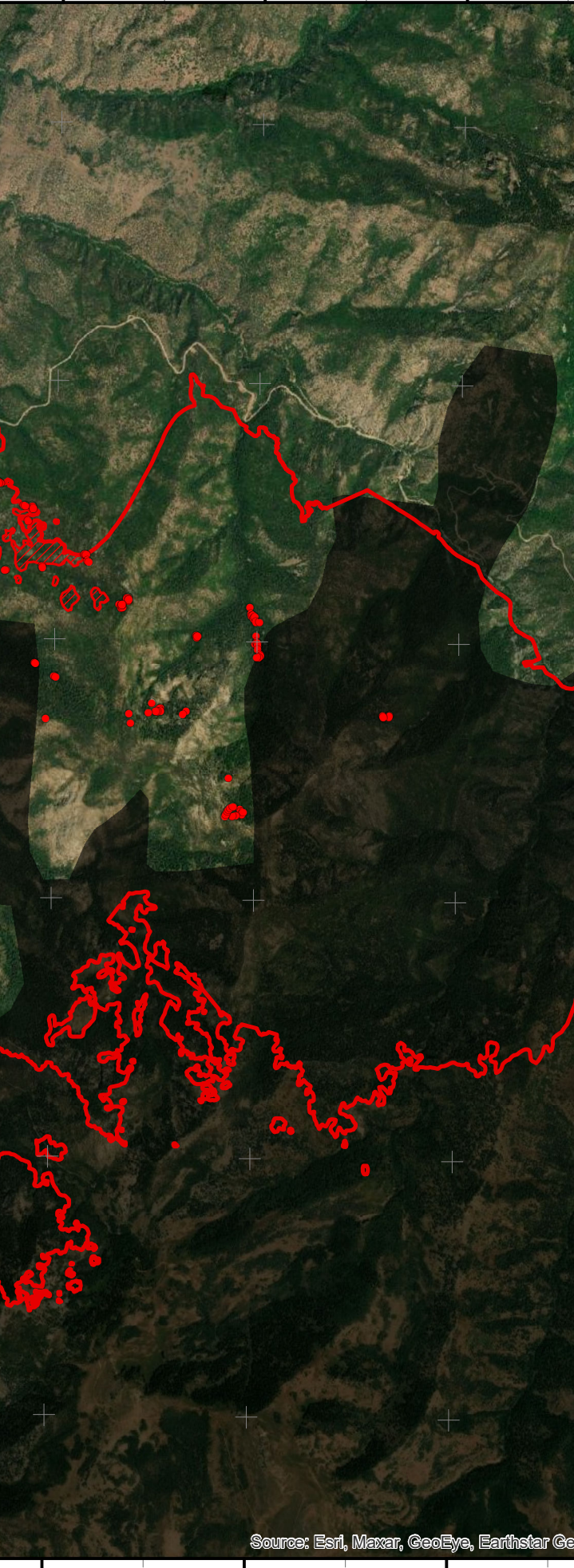
38°53'0"N

38°52'0"N

112°21'0"W 112°20'0"W 112°19'0"W 112°18'0"W 112°17'0"W 112°16'0"W 112°15'0"W 112°14'0"W 112°13'0"W 112°12'0"W 112°11'0"W 112°10'0"W



112°21'0"W 112°20'0"W 112°19'0"W 112°18'0"W 112°17'0"W 112°16'0"W 112°15'0"W 112°14'0"W 112°13'0"W 112°12'0"W 112°11'0"W 112°10'0"W



Source: Esri, Maxar, GeoEye, Earthstar Geographics, CNES/Airbus DS, USDA, USGS, AeroGRID, IGN, and the GIS User Community

112°21'0"W 112°20'0"W 112°19'0"W 112°18'0"W 112°17'0"W 112°16'0"W 112°15'0"W 112°14'0"W 112°13'0"W 112°12'0"W 112°11'0"W 112°10'0"W



112°21'0"W 112°20'0"W 112°19'0"W 112°18'0"W 112°17'0"W 112°16'0"W 112°15'0"W 112°14'0"W 112°13'0"W 112°12'0"W 112°11'0"W 112°10'0"W