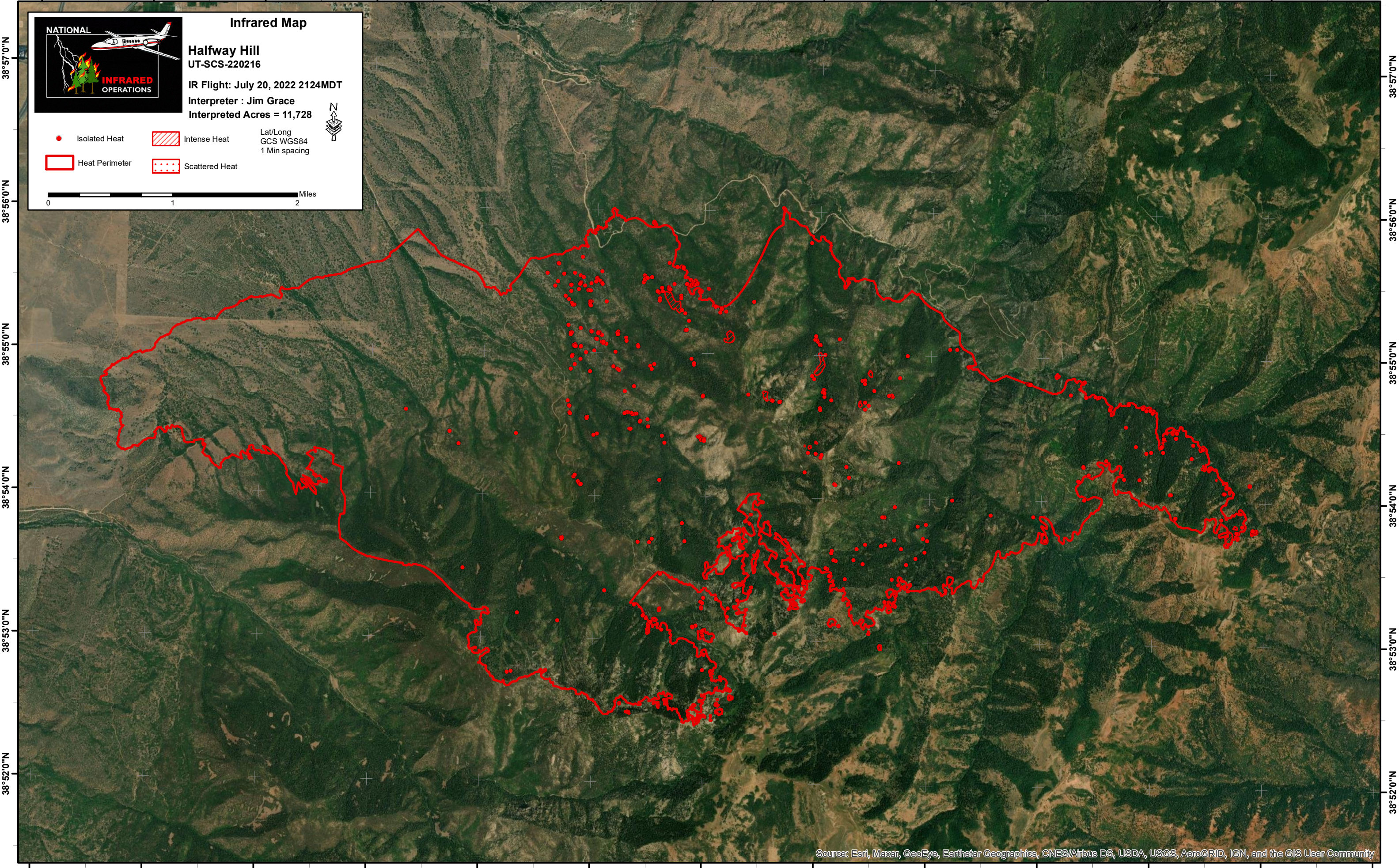


112°21'0"W 112°20'0"W 112°19'0"W 112°18'0"W 112°17'0"W 112°16'0"W 112°15'0"W 112°14'0"W 112°13'0"W 112°12'0"W 112°11'0"W 112°10'0"W



Infrared Map

Halfway Hill
UT-SCS-220216

IR Flight: July 20, 2022 2124MDT
Interpreter : Jim Grace
Interpreted Acres = 11,728

Isolated Heat
 Intense Heat
 Scattered Heat

Heat Perimeter

Lat/Long
GCS WGS84
1 Min spacing

38°57'0"N
38°56'0"N
38°55'0"N
38°54'0"N
38°53'0"N
38°52'0"N

38°57'0"N
38°56'0"N
38°55'0"N
38°54'0"N
38°53'0"N
38°52'0"N

112°21'0"W 112°20'0"W 112°19'0"W 112°18'0"W 112°17'0"W 112°16'0"W 112°15'0"W 112°14'0"W 112°13'0"W 112°12'0"W 112°11'0"W 112°10'0"W 112°9'0"W