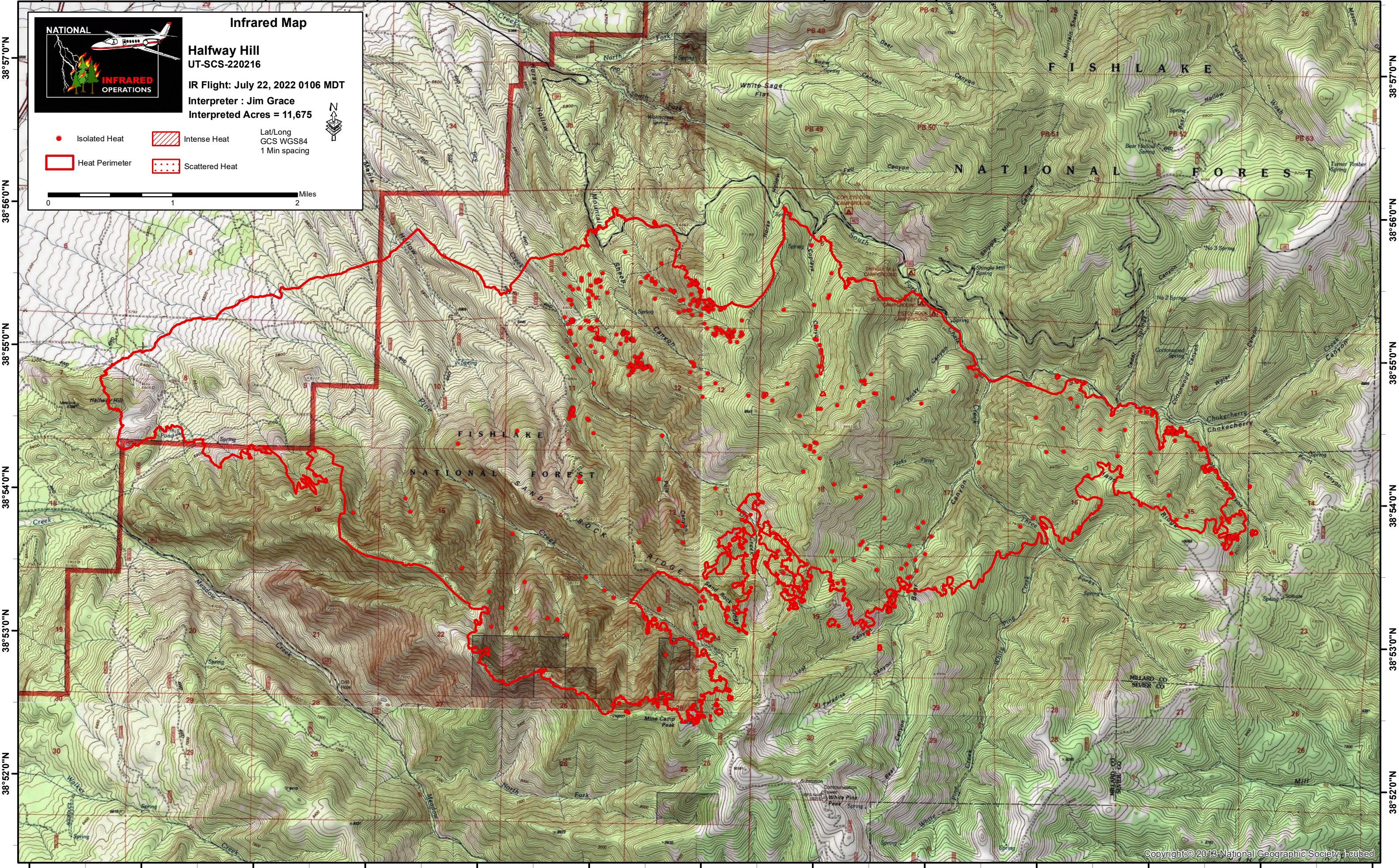


112°21'0"W 112°20'0"W 112°19'0"W 112°18'0"W 112°17'0"W 112°16'0"W 112°15'0"W 112°14'0"W 112°13'0"W 112°12'0"W 112°11'0"W 112°10'0"W



**Infrared Map**

**NATIONAL INFRARED OPERATIONS**

**Halfway Hill**  
UT-SCS-220216

IR Flight: July 22, 2022 0106 MDT  
Interpreter: Jim Grace  
Interpreted Acres = 11,675

Lat/Long  
GCS WGS84  
1 Min spacing

● Isolated Heat  
▨ Intense Heat  
▭ Heat Perimeter  
⋯ Scattered Heat

0 1 2 Miles

112°21'0"W 112°20'0"W 112°19'0"W 112°18'0"W 112°17'0"W 112°16'0"W 112°15'0"W 112°14'0"W 112°13'0"W 112°12'0"W 112°11'0"W 112°10'0"W 112°9'0"W

38°57'0"N  
38°56'0"N  
38°55'0"N  
38°54'0"N  
38°53'0"N  
38°52'0"N

38°57'0"N  
38°56'0"N  
38°55'0"N  
38°54'0"N  
38°53'0"N  
38°52'0"N