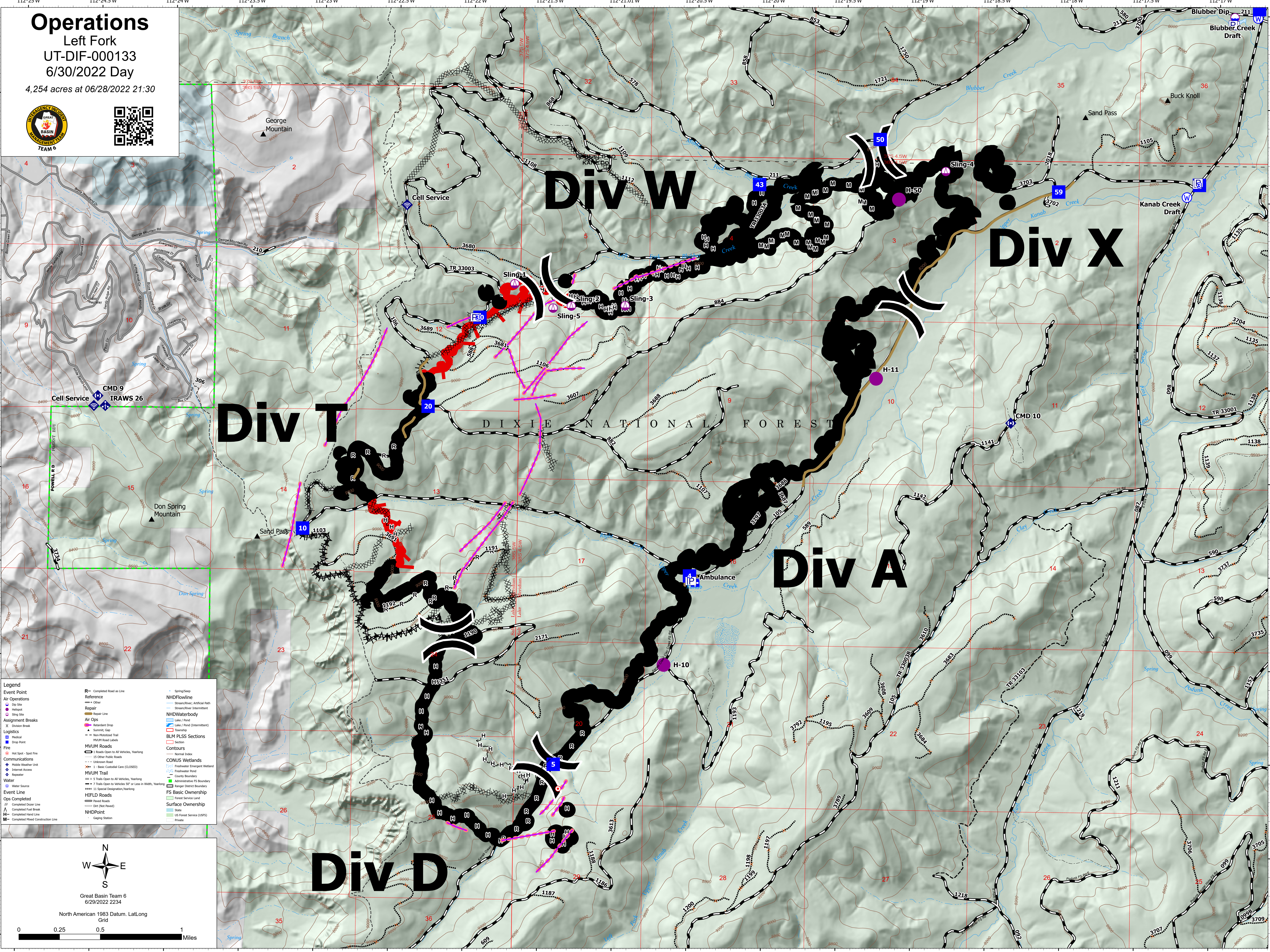


Operations

Left Fork
UT-DIF-000133
6/30/2022 Day
4,254 acres at 06/28/2022 21:30



Div T

Div W

Div X

Div A

Div D

- Legend**
- Event Point**
 - Hot Spot - Spot Fire
 - Mobile Weather Unit
 - Internet Access
 - Repeater
 - Water Source
 - Event Line
 - Ops Completed
 - Completed Down Line
 - Completed Road Break
 - Completed Hand Line
 - Completed Mixed Construction Line
- Air Operations**
 - Drop Site
 - Helispot
 - Site Site
- Assignment Breaks**
 - Division Break
- Logistics**
 - Headset
 - Drop Point
- Fire**
 - Hot Spot - Spot Fire
 - 15 Other Public Roads
 - Unknown Road
 - Block Categorical Cave (CLOSED)
 - MVUM Trail
 - 5 Trails Open to All Vehicles, Yearling
 - 7 Trails Open to Vehicles 50' or Less in Width, Yearling
 - 11 Special Designation, Yearling
 - HIFLD Roads
 - Dirt (Not Paved)
 - NHDPoint
 - Gaping Station
- Reference**
 - Other
- Regul**
 - Repair Line
- Air Ops**
 - Retardant Drop
 - Summit Cap
 - Non-Hotspot Trail
 - MVUM Road Labels
- MVUM Roads**
 - Roads Open to All Vehicles, Yearling
 - 15 Other Public Roads
 - Unknown Road
 - Block Categorical Cave (CLOSED)
- MVUM Trail**
 - 5 Trails Open to All Vehicles, Yearling
 - 7 Trails Open to Vehicles 50' or Less in Width, Yearling
 - 11 Special Designation, Yearling
- HIFLD Roads**
 - Dirt (Not Paved)
- NHDPoint**
 - Gaping Station
- NHDFlowline**
 - Stream/River, Artificial Path
 - Stream/River Interment
- NHDWaterbody**
 - Lake / Pond
 - Lake / Pond (Intermittent)
- BLM PLSS Sections**
 - Section
- Contours**
 - Normal Index
- CONUS Wetlands**
 - Freshwater Emergent Wetland
 - Administrative FS Boundary
 - Ranger District Boundary
 - County Boundary
 - FS Basic Ownership
 - Forest Service Land
 - Surface Ownership
 - State
 - US Forest Service (USFS)
 - Private



Great Basin Team 6
6/29/2022 2234

North American 1983 Datum, Lat/Long
Grid

