

Transportation

Left Fork
UT-DIF-000133
6/30/2022 Day

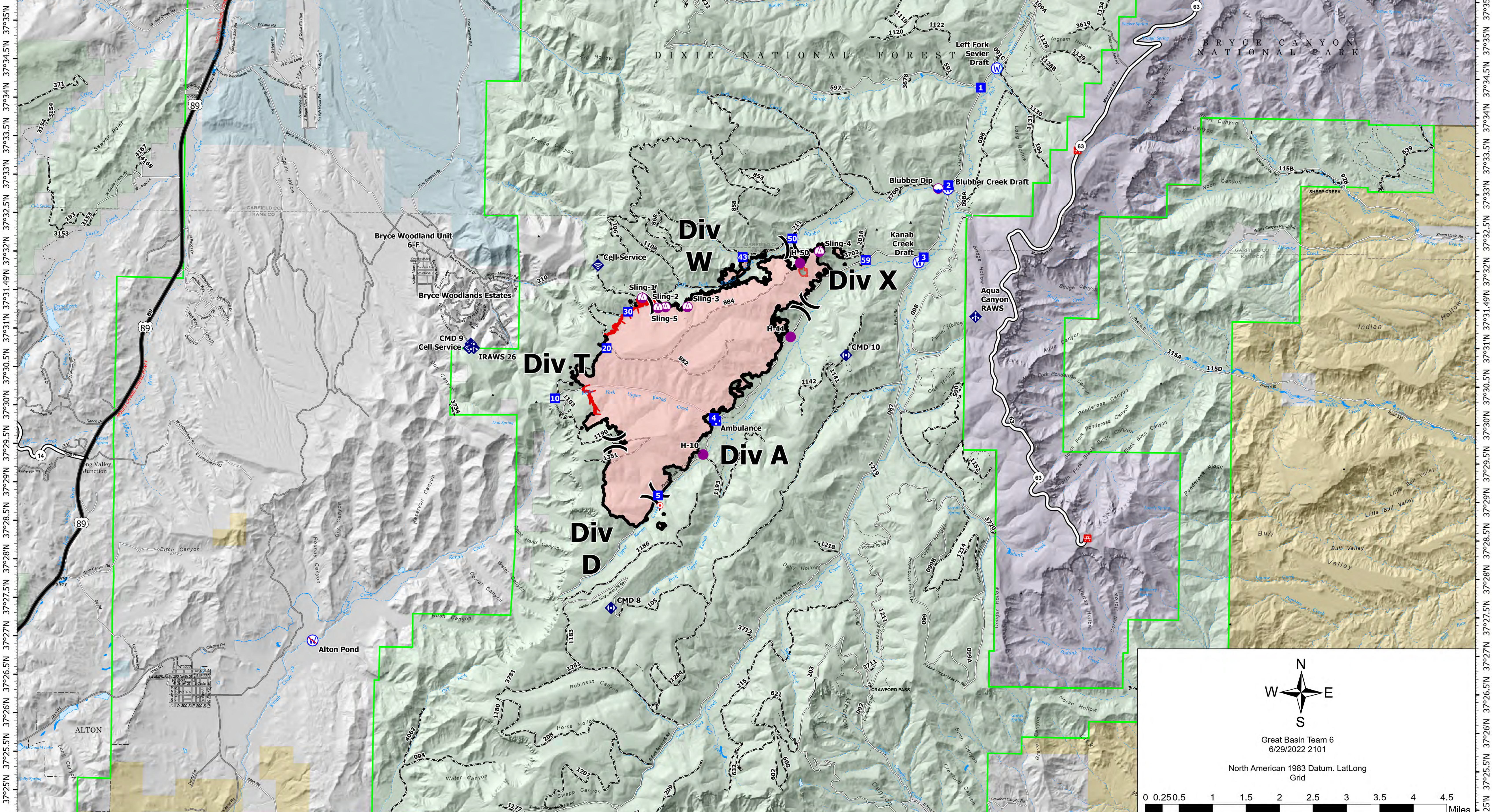
4,254 acres at 06/28/2022 21:30



FC Point Type	Label	Latitude WGS84 DDM	Longitude WGS84 DDM
Camp	Base Camp	37° 40.422' N	112° 12.513' W
Dip Site	Tropic Dip	37° 36.245' N	112° 15.234' W
Dip Site	Blubber Dip	37° 32.993' N	112° 16.903' W
Drop Point	20	37° 30.856' N	112° 22.280' W
Drop Point	1	37° 34.312' N	112° 16.232' W
Drop Point	2	37° 33.038' N	112° 16.739' W
Drop Point	3	37° 32.095' N	112° 17.126' W
Drop Point	4	37° 29.969' N	112° 20.510' W
Drop Point	5	37° 28.852' N	112° 21.406' W
Drop Point	10	37° 30.195' N	112° 23.110' W
Drop Point	43	37° 32.066' N	112° 20.078' W
Drop Point	50	37° 32.316' N	112° 19.272' W
Drop Point	59	37° 32.049' N	112° 18.070' W
Drop Point	30	37° 31.336' N	112° 21.940' W
Helibase	Left Fork Helibase	37° 42.145' N	112° 09.212' W
Helispot	H-10	37° 29.492' N	112° 20.676' W
Helispot	H-Dave's Hollow	37° 40.578' N	112° 12.311' W
Helispot	H-50	37° 31.997' N	112° 19.141' W
Helispot	H-11	37° 31.037' N	112° 19.278' W
Incident Command Post	Panguitch ICP	37° 49.314' N	112° 25.645' W
Internet Access	Cell Service	37° 38.576' N	112° 13.645' W
Internet Access	Cell Service	37° 30.834' N	112° 24.522' W
Internet Access	Cell Service	37° 31.931' N	112° 22.440' W
Landmark	Weed Wash	37° 41.968' N	112° 09.492' W
Medical	Ambulance	37° 29.932' N	112° 20.472' W
Medical	Mobile Medic Support	37° 36.781' N	112° 15.165' W
Mobile Weather Unit	Aqua Canyon RAWs	37° 31.334' N	112° 16.267' W
Mobile Weather Unit	Dixie Portable #3 RAWs	37° 38.384' N	112° 15.434' W
Mobile Weather Unit	IRAWS 26	37° 30.835' N	112° 24.445' W
Repair Point		37° 30.783' N	112° 22.240' W
Repair Point		37° 29.962' N	112° 20.515' W
Repair Point		37° 29.503' N	112° 20.671' W
Repair Point		37° 32.055' N	112° 22.451' W
Repeater	CMD 8	37° 27.480' N	112° 22.145' W
Repeater	CMD 7	37° 41.199' N	112° 18.180' W
Repeater	CMD 9	37° 30.887' N	112° 24.496' W
Repeater	CMD 10	37° 30.810' N	112° 18.370' W
Restricted Water Source	Alton Pond	37° 27.000' N	112° 27.001' W
Sling Site	Sling-3	37° 31.408' N	112° 20.968' W
Sling Site	Sling-1	37° 31.517' N	112° 21.710' W
Sling Site	Sling-2	37° 31.402' N	112° 21.329' W
Sling Site	Sling-4	37° 32.150' N	112° 18.829' W
Sling Site	Sling-5	37° 31.390' N	112° 21.451' W
Water Source	Left Fork Sevier Draft	37° 34.565' N	112° 15.975' W
Water Source	Blubber Creek Draft	37° 32.991' N	112° 16.747' W
Water Source	Kanab Creek Draft	37° 32.029' N	112° 17.209' W

Legend

- Event Point
- Air Operations
 - Dip Site
 - Helispot
 - Helibase
 - Sling Site
- Assignment Breaks
 - Division Break
- Logistics
 - Medical
 - Incident Command Post
 - Drop Point
 - Camp
- Fire
 - Hot Spot - Spot Fire
- Reference
 - Landmark
- Communications
 - Mobile Weather Unit
 - Internet Access
 - Repeater
- Water
 - Water Source
 - Restricted Water Source
- Perimeter Line
- FC Line Type
 - Contained
 - Uncontained
- Event Polygon
- Polygon Type
 - Wildfire Daily Fire Perimeter
 - MVUM Road Labels
- HIFLD Roads
- ROUTE_TYPE, Paved, FuncClass
 - Primary Highway
 - Secondary Highway
 - Paved Roads
 - Dirt (Not Paved)
- MVUM Roads
 - 1 Roads Open to All Vehicles, Yearlong
 - 2 Roads Open to All Vehicles, Seasonal
 - 3 Roads Open to Highway Legal Vehicles Only, Yearlong
 - 14 State or US Highway
 - 15 Other Public Roads
 - Unknown Road
- Surface Ownership
 - Bureau of Land Management (BLM)
 - National Park Service (NPS)
 - State
 - US Forest Service (USFS)
 - Private



North American 1983 Datum, Lat/Long Grid

0 0.250.5 1 1.5 2 2.5 3 3.5 4 4.5 Miles