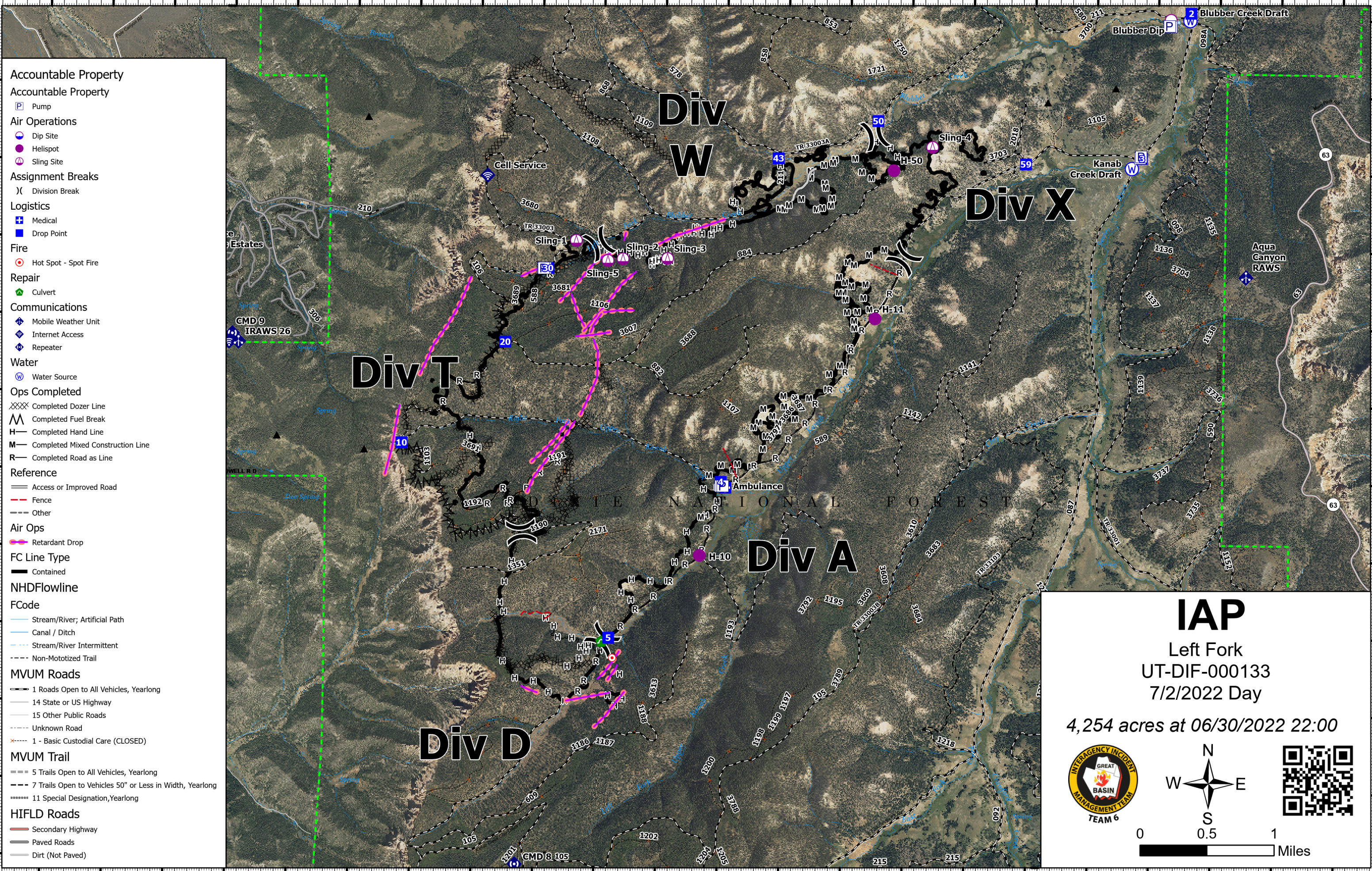


112°26'W 112°25.5'W 112°25'W 112°24.5'W 112°24'W 112°23.5'W 112°23'W 112°22.5'W 112°22'W 112°21.5'W

112°20.5'W 112°20'W 112°19.5'W 112°19'W 112°18.5'W 112°18'W 112°17.5'W 112°17'W 112°16.5'W 112°16'W 112°15.5'W



- Accountable Property**
- Accountable Property
 - Pump
- Air Operations**
- Dip Site
 - Helispot
 - Sling Site
- Assignment Breaks**
- Division Break
- Logistics**
- Medical
 - Drop Point
- Fire**
- Hot Spot - Spot Fire
- Repair**
- Culvert
- Communications**
- Mobile Weather Unit
 - Internet Access
 - Repeater
- Water**
- Water Source
- Ops Completed**
- Completed Dozer Line
 - Completed Fuel Break
 - Completed Hand Line
 - Completed Mixed Construction Line
 - Completed Road as Line
- Reference**
- Access or Improved Road
 - Fence
 - Other
- Air Ops**
- Retardant Drop
- FC Line Type**
- Contained
- NHDFlowline**
- FCode**
- Stream/River; Artificial Path
 - Canal / Ditch
 - Stream/River Intermittent
 - Non-Mototized Trail
- MVUM Roads**
- 1 Roads Open to All Vehicles, Yearlong
 - 14 State or US Highway
 - 15 Other Public Roads
 - Unknown Road
 - 1 - Basic Custodial Care (CLOSED)
- MVUM Trail**
- 5 Trails Open to All Vehicles, Yearlong
 - 7 Trails Open to Vehicles 50" or Less in Width, Yearlong
 - 11 Special Designation, Yearlong
- HIFLD Roads**
- Secondary Highway
 - Paved Roads
 - Dirt (Not Paved)

IAP
 Left Fork
 UT-DIF-000133
 7/2/2022 Day
 4,254 acres at 06/30/2022 22:00

112°26'W 112°25.5'W 112°25'W 112°24.5'W 112°24'W 112°23.5'W 112°23'W 112°22.5'W 112°22'W 112°21.5'W

112°20.5'W 112°20'W 112°19.5'W 112°19'W 112°18.5'W 112°18'W 112°17.5'W 112°17'W 112°16.5'W 112°16'W 112°15.5'W

37°32.5'N
37°32'N
37°31.49'N
37°31'N
37°30.5'N
37°30'N
37°29.5'N
37°29'N
37°28.5'N
37°28'N
37°27.5'N

37°33'N
37°32.5'N
37°32'N
37°31.49'N
37°31'N
37°30.5'N
37°30'N
37°29.5'N
37°29'N
37°28.5'N
37°28'N
37°27.5'N