



FC Point Type	Label	Latitude WGS84 DDM	Longitude WGS84 DDM
Camp	Base Camp	37° 40.421' N	112° 12.513' W
Culvert			
Dip Site	Tropic Dip	37° 36.244' N	112° 15.233' W
Dip Site	Blubber Dip	37° 32.993' N	112° 16.902' W
Drop Point	20	37° 30.856' N	112° 22.272' W
Drop Point	1	37° 34.312' N	112° 16.232' W
Drop Point	2	37° 33.038' N	112° 16.738' W
Drop Point	3	37° 32.095' N	112° 17.126' W
Drop Point	4	37° 29.969' N	112° 20.510' W
Drop Point	5	37° 28.852' N	112° 21.405' W
Drop Point	10	37° 30.195' N	112° 23.109' W
Drop Point	43	37° 32.066' N	112° 20.077' W
Drop Point	50	37° 32.316' N	112° 19.272' W
Drop Point	59	37° 32.049' N	112° 18.069' W
Drop Point	30	37° 31.335' N	112° 21.940' W
Helibase	Left Fork Helibase	37° 42.145' N	112° 09.212' W
Helispot	H-10	37° 29.492' N	112° 20.675' W
Helispot	H-Dave's Hollow	37° 40.577' N	112° 12.310' W
Helispot	H-50	37° 31.997' N	112° 19.140' W
Helispot	H-11	37° 31.037' N	112° 19.277' W
Incident Command Post	Panguitch ICP	37° 49.314' N	112° 25.645' W
Internet Access	Cell Service	37° 38.576' N	112° 13.644' W
Internet Access	Cell Service	37° 30.833' N	112° 24.521' W
Internet Access	Cell Service	37° 31.931' N	112° 22.439' W
Landmark	Weed Wash	37° 41.968' N	112° 09.492' W
Medical	Ambulance	37° 29.932' N	112° 20.472' W
Medical	Mobile Medic Support	37° 36.781' N	112° 15.164' W
Mobile Weather Unit	Aqua Canyon RAWs	37° 31.333' N	112° 16.267' W
Mobile Weather Unit	Dixie Portable #3 RAWs	37° 38.833' N	112° 15.433' W
Mobile Weather Unit	IRAWs 26	37° 30.834' N	112° 24.444' W
Repair Point		37° 30.782' N	112° 22.240' W
Repair Point		37° 29.962' N	112° 20.515' W
Repair Point		37° 29.502' N	112° 20.670' W
Repair Point		37° 32.055' N	112° 22.450' W
Repeater	CMD 8	37° 27.480' N	112° 22.144' W
Repeater	CMD 7	37° 41.199' N	112° 18.179' W
Repeater	CMD 9	37° 30.887' N	112° 24.495' W
Restricted Water Source	Alton Pond	37° 27.000' N	112° 27.000' W
Sling Site	Sling-3	37° 31.408' N	112° 20.967' W
Sling Site	Sling-1	37° 31.517' N	112° 21.709' W
Sling Site	Sling-2	37° 31.402' N	112° 21.328' W
Sling Site	Sling-4	37° 32.150' N	112° 18.828' W
Sling Site	Sling-5	37° 31.390' N	112° 21.450' W
Water Source	Left Fork Sevier Draft	37° 34.565' N	112° 15.974' W
Water Source	Blubber Creek Draft	37° 32.991' N	112° 16.746' W
Water Source	Kanab Creek Draft	37° 32.029' N	112° 17.208' W

Transportation

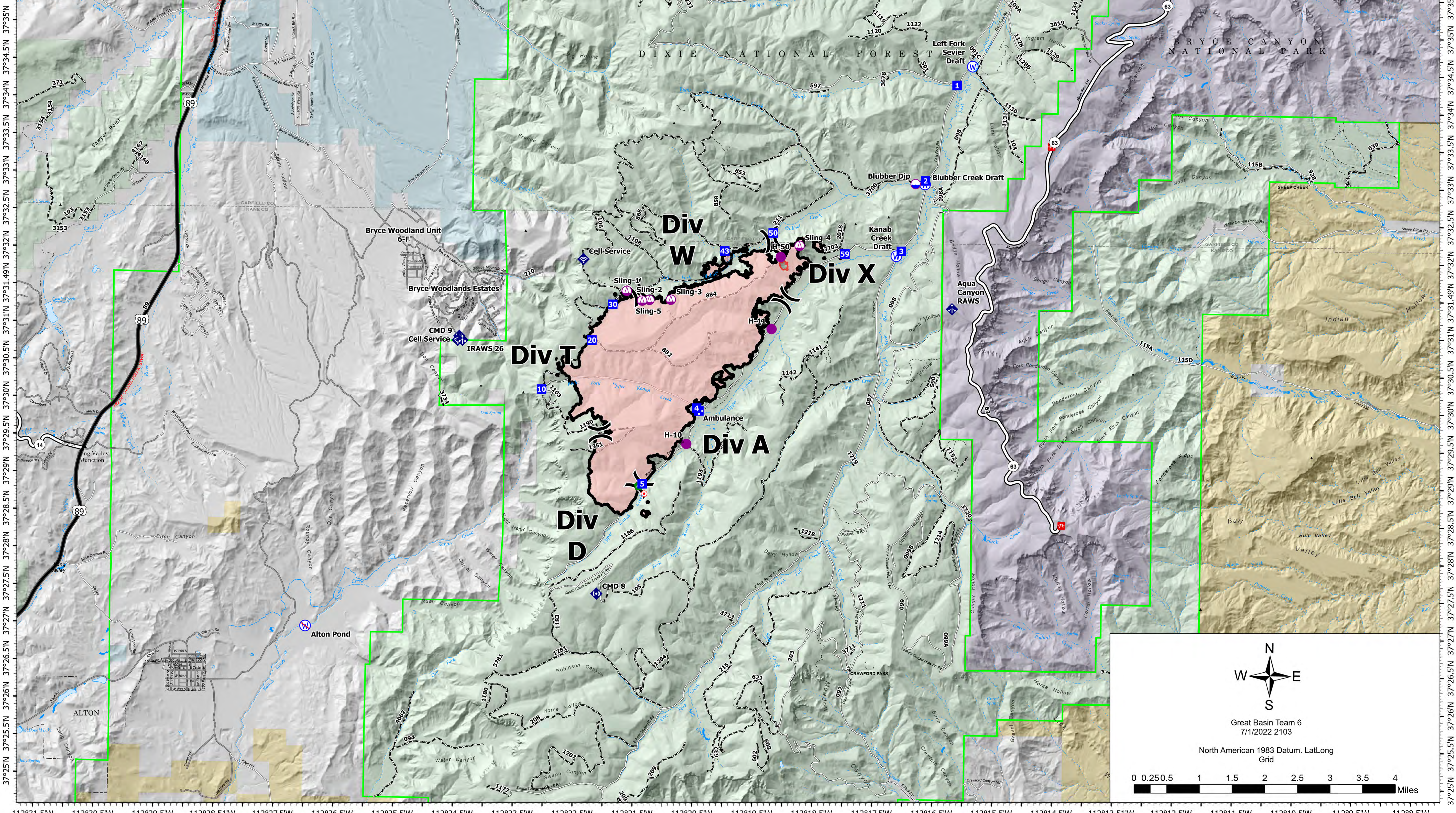
Left Fork
UT-DIF-000133
7/2/2022 Day
4,254 acres at 06/30/2022 22:00

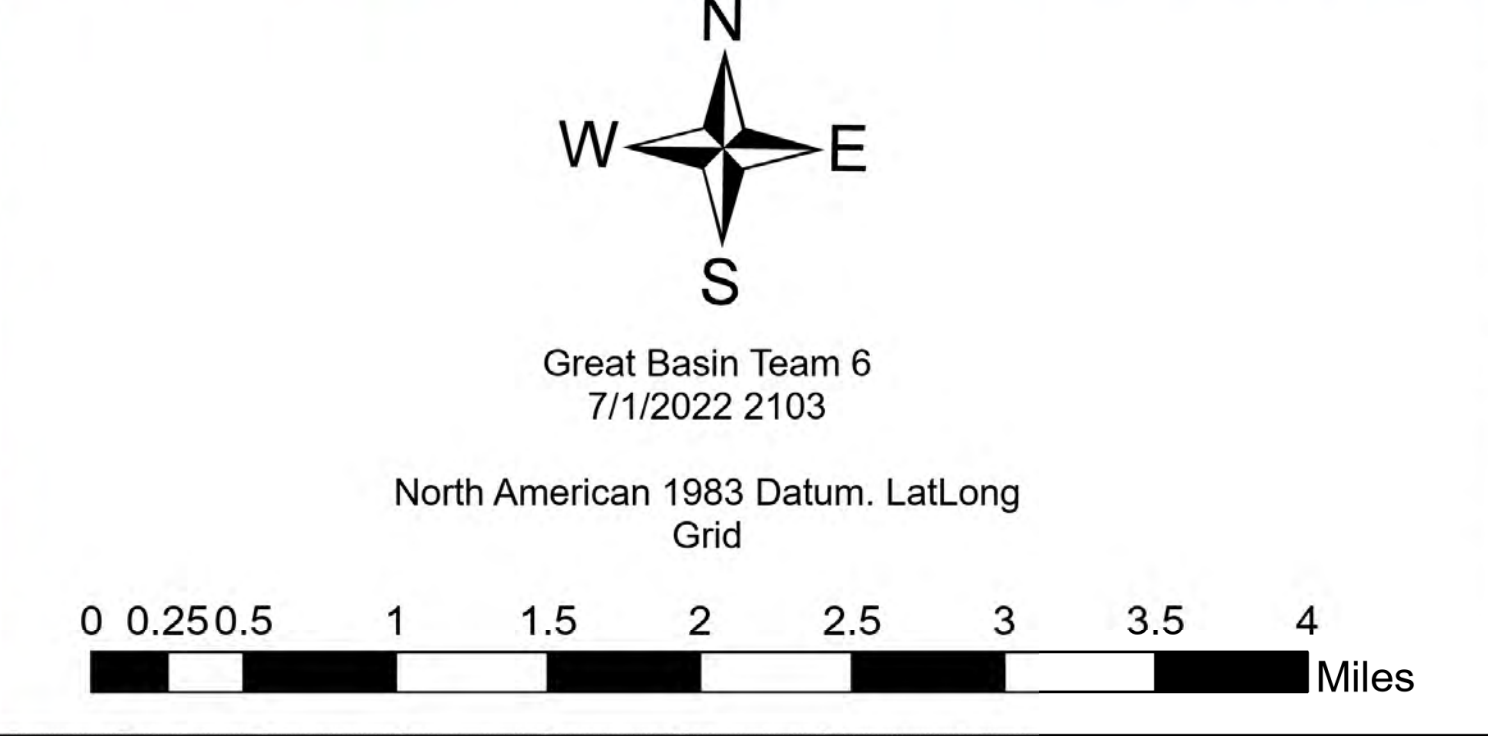
Legend

Event Point

- Air Operations
 - Dip Site
 - Helibase
 - Sling Site
- Assignment Breaks
 - Division Break
- Logistics
 - Medical
 - Incident Command Post
 - Drop Point
 - Camp
- Fire
 - Hot Spot - Spot Fire
- Reference
 - Landmark
- Repair
 - Culvert
- Communications
 - Mobile Weather Unit
 - Internet Access
 - Repeater
- Water
 - Water Source
 - Restricted Water Source
- Perimeter Line
 - FC Line Type
 - Contained
- Event Polygon
 - Wildfire Daily Fire Perimeter
 - Historic Road Labels
- HIFLD Roads
 - ROUTE_TYPE, Paved, FuncClass
 - Primary Highway
 - Secondary Highway
 - Paved Roads
 - Dirt (Not Paved)
- MVUM Roads
 - 1 Roads Open to All Vehicles, Yearling
 - 2 Roads Open to All Vehicles, Seasonal
 - 3 Roads Open to Highway Legal Vehicles Only, Yearling
 - 14 State or US Highway
 - 15 Other Public Roads
 - Unknown Road
 - Administrative FS Boundary
 - County Boundary
- Surface Ownership
 - Bureau of Land Management (BLM)
 - National Park Service (NPS)
 - State
 - US Forest Service (USFS)
 - Private



North American 1983 Datum, Lat/Long Grid



Scale: 0 0.250.5 1 1.5 2 2.5 3 3.5 4 Miles

Great Basin Team 6
7/1/2022 21:03