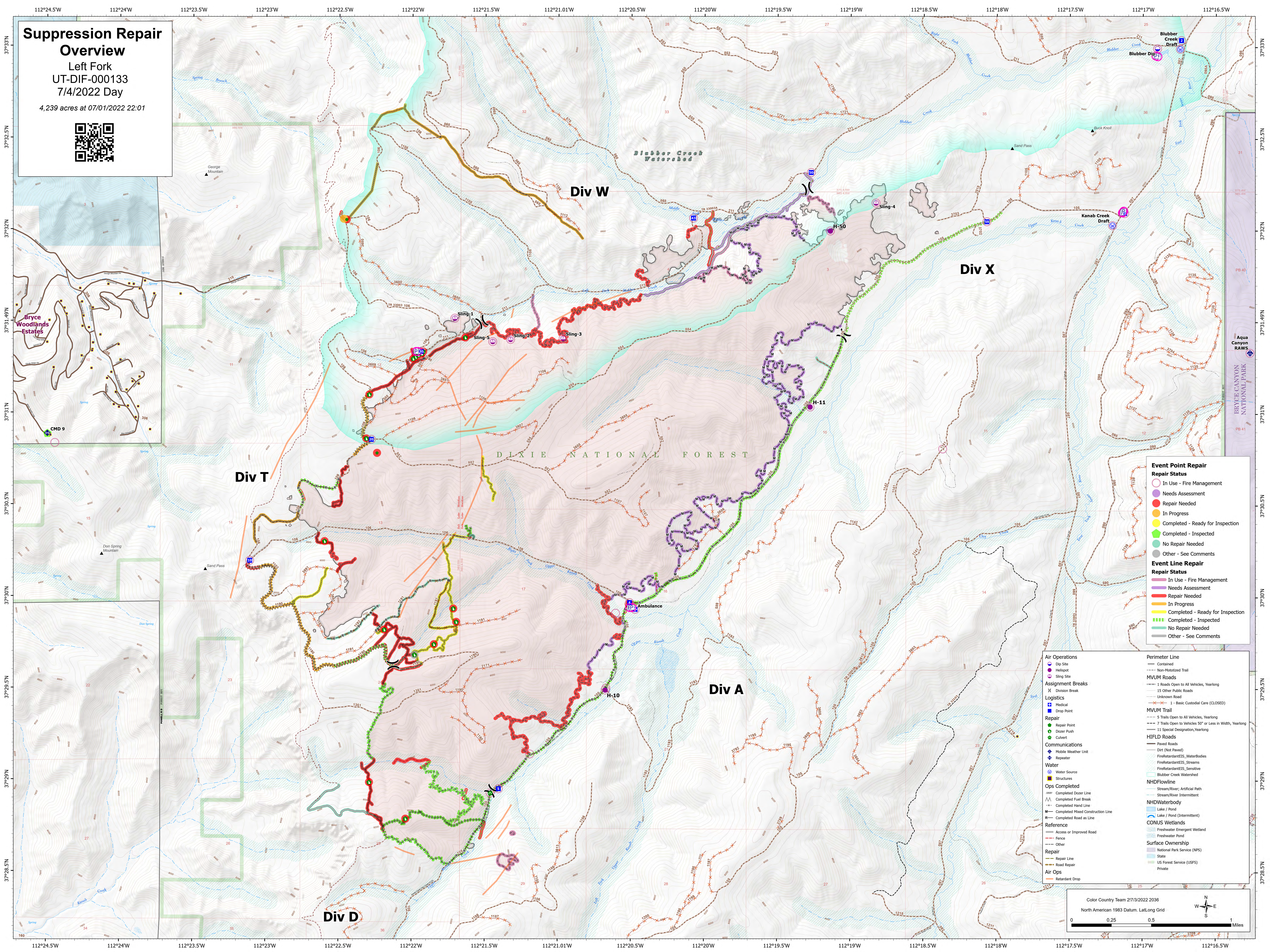


# Suppression Repair Overview

Left Fork  
UT-DIF-000133  
7/4/2022 Day

4,239 acres at 07/01/2022 22:01



Div W

Div X

Div T

Div A

Div D

### Event Point Repair Repair Status

- In Use - Fire Management
- Needs Assessment
- Repair Needed
- In Progress
- Completed - Ready for Inspection
- Completed - Inspected
- No Repair Needed
- Other - See Comments

### Event Line Repair Repair Status

- In Use - Fire Management
- Needs Assessment
- Repair Needed
- In Progress
- Completed - Ready for Inspection
- Completed - Inspected
- No Repair Needed
- Other - See Comments

### Air Operations

- Dip Site
- Helispot
- Sling Site

### Assignment Breaks

- Division Break
- 15 Other Public Roads

### Logistics

- Medical
- Drop Point

### Repair

- Repair Point
- Dozer Push
- Culvert

### Communications

- Mobile Weather Unit
- Repeater

### Water

- Water Source
- Structures

### Ops Completed

- Completed Dozer Line
- Completed Fuel Break
- Completed Hand Line
- Completed Mixed Construction Line
- Completed Road as Line

### Reference

- Access or Improved Road
- Fence
- Other

### Repair

- Repair Line
- Road Repair

### Air Ops

- Retardant Drop

### Perimeter Line

- Contained
- Non-Mototized Trail

### MVUM Roads

- 1 Roads Open to All Vehicles, Yearlong
- 15 Other Public Roads
- Unknown Road
- 1 Basic Custodial Care (CLOSED)

### MVUM Trail

- 5 Trails Open to All Vehicles, Yearlong
- 7 Trails Open to Vehicles 50' or Less in Width, Yearlong
- 11 Special Designation, Yearlong

### HIFLD Roads

- Paved Roads
- Dirt (Not Paved)
- FireRetardantEIS\_WaterBodies
- FireRetardantEIS\_Streams
- FireRetardantEIS\_Sensitive
- Blubber Creek Watershed

### NHDFlowline

- Stream/River: Artificial Path
- Stream/River: Intermittent

### NHDWaterbody

- Lake / Pond
- Lake / Pond (Intermittent)

### CONUS Wetlands

- Freshwater Emergent Wetland
- Freshwater Pond

### Surface Ownership

- National Park Service (NPS)
- State
- US Forest Service (USFS)
- Private

Color Country Team 217/3/2022 2036  
North American 1983 Datum, Lat/Long Grid