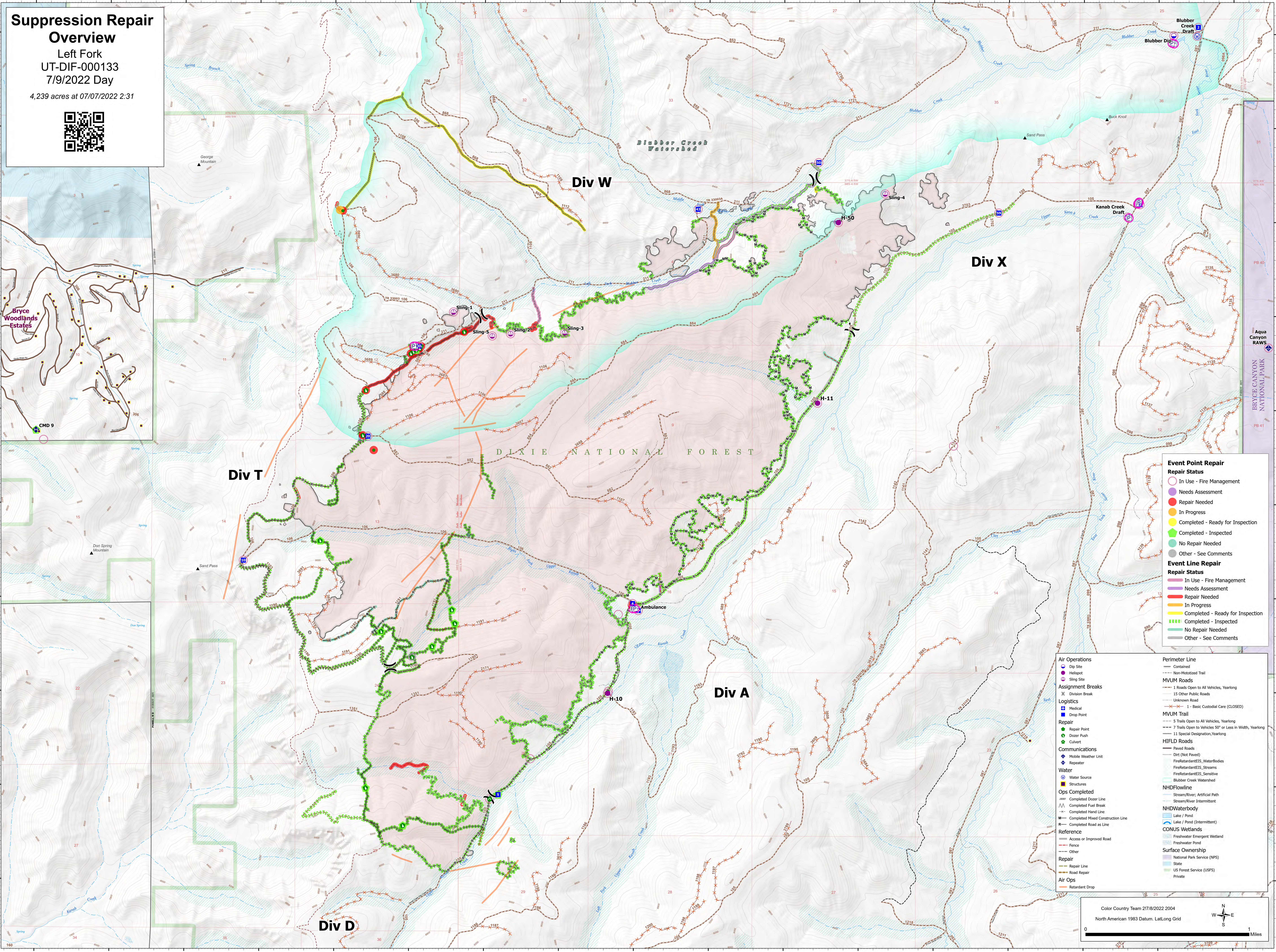


# Suppression Repair Overview

Left Fork  
UT-DIF-000133  
7/9/2022 Day

4,239 acres at 07/07/2022 2:31



**Bryce Woodlands Estates**

CMD 9

Don Spring Mountain

Sand Pass

George Mountain

**Event Point Repair**

**Repair Status**

- In Use - Fire Management
- Needs Assessment
- Repair Needed
- In Progress
- Completed - Ready for Inspection
- Completed - Inspected
- No Repair Needed
- Other - See Comments

**Event Line Repair**

**Repair Status**

- In Use - Fire Management
- Needs Assessment
- Repair Needed
- In Progress
- Completed - Ready for Inspection
- Completed - Inspected
- No Repair Needed
- Other - See Comments

**Air Operations**

- Dip Site
- Helispot
- Slings

**Assignment Breaks**

- Medical
- Drop Point

**Repair**

- Repair Point
- Dozer Push
- Culvert

**Communications**

- Mobile Weather Unit
- Repeater

**Water**

- Water Source
- Structures

**Ops Completed**

- Completed Dozer Line
- Completed Fuel Break
- Completed Hand Line
- Completed Mixed Construction Line
- Completed Road as Line

**Reference**

- Access or Improved Road
- Fence
- Other

**Repair**

- Repair Line
- Road Repair

**Air Ops**

- Retardant Drop

**Perimeter Line**

- Contained
- Non-MotORIZED Trail

**MVUM Roads**

- 1 Roads Open to All Vehicles, Yearlong
- 15 Other Public Roads
- Unknown Road
- Basic Custodial Care (CLOSED)

**MVUM Trail**

- 5 Trails Open to All Vehicles, Yearlong
- 7 Trails Open to Vehicles 50' or Less in Width, Yearlong
- 11 Special Designation, Yearlong

**HIFLD Roads**

- Paved Roads
- Dirt (Not Paved)
- FireRetardantEIS\_Streams
- FireRetardantEIS\_Sensitive
- Blubber Creek Watershed

**NHDFlowline**

- Stream/River: Artificial Path
- Stream/River: Intermittent

**NHDWaterbody**

- Lake / Pond
- Lake / Pond (Intermittent)

**CONUS Wetlands**

- Freshwater Emergent Wetland
- Freshwater Pond

**Surface Ownership**

- National Park Service (NPS)
- State
- US Forest Service (USFS)
- Private

Color Country Team 2/7/8/2022 2004

North American 1983 Datum. Lat/Long Grid