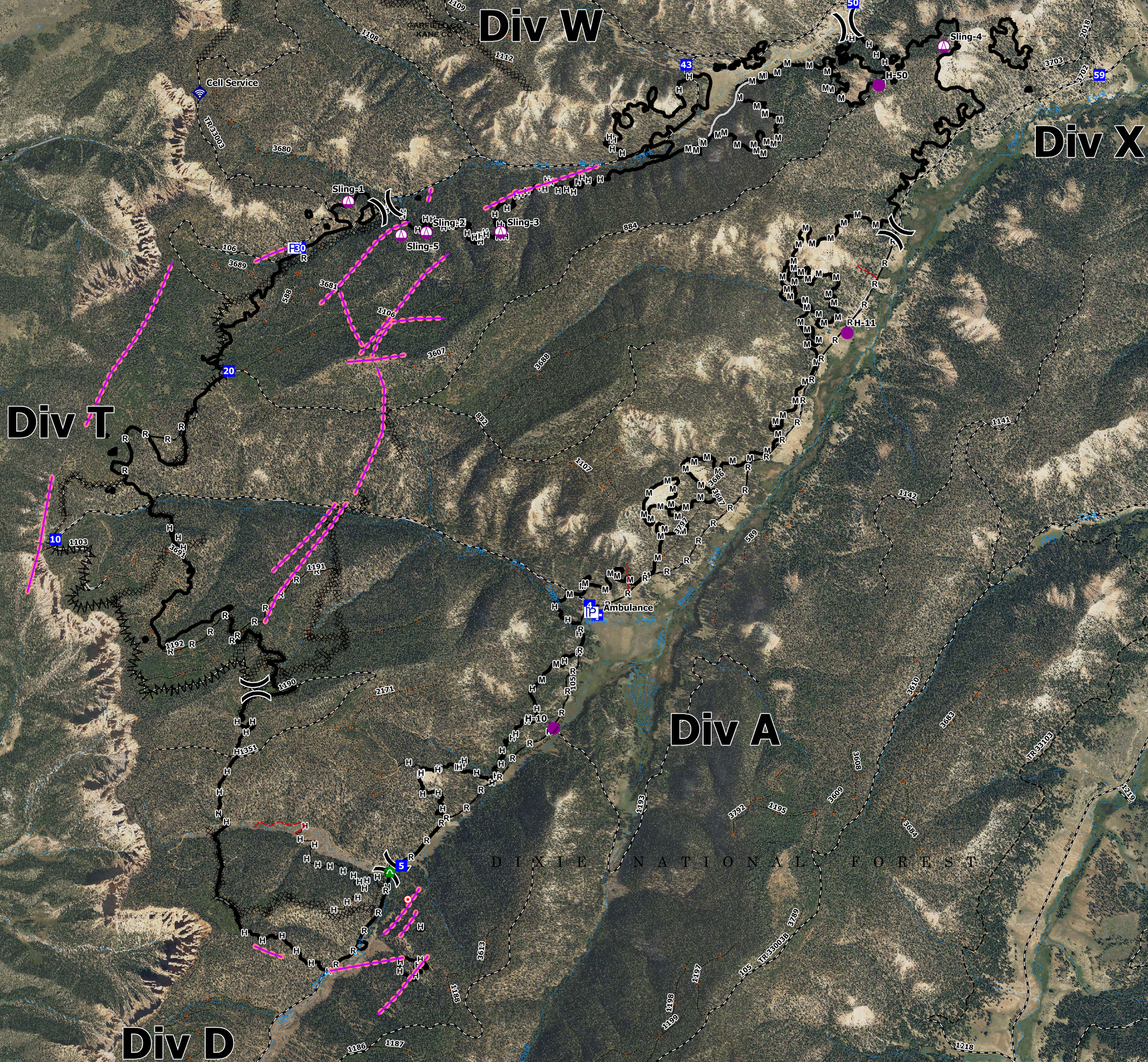


Operations

Left Fork
UT-DIF-000133
7/3/2022 Day
4,239 acres at 07/01/2022 22:01



- Legend**
- Event Point**
 - Air Operations
 - Drop Site
 - Helipad
 - Sling Site
 - Assignment Breaks
 - Division Break
 - Medical
 - Drop Point
 - Logistics
 - Hot Spot - Spot Fire
 - Repair
 - Cabin
 - Communications
 - Mobile Weather Unit
 - Internet Access
 - Repeater
 - Water
 - Water Source
 - Event Line**
 - Ops Completed
 - Completed Over Line
 - Completed Fuel Break
 - Completed Hand Line
 - Completed Road Construction Line
 - Completed Road as Line
 - Reference
 - Access or Improved Road
 - Fence
 - Other
 - Air Ops
 - Retardant Drop
 - Perimeter Line
 - FC Line Type
 - Containment
 - Support, Gap
 - Non-Permeable Trail
 - MVUM Roads**
 - 1 Road Open to All Vehicles, No Weight
 - 14 Open to All Vehicles
 - 15 Other Public Roads
 - Unimproved Road
 - 1 Basic Custodial Care (CLOSURE)
 - MVUM Trail**
 - 3 Trails Open to All Vehicles, No Weight
 - 7 Trails Open to Vehicles 50' or Less in Width, No Weight
 - 15 Special Designation, No Weight
 - HFD Roads**
 - Secondary Highway
 - Revised Road
 - Old Road (No Road)
 - FS Canner Unit Name
 - Administrative FS Boundary
 - Range District Boundary
 - County Boundary
 - NHD Point**
 - Logging Station
 - Spring/Step
 - NHD Flowline**
 - Stream/Runway, Artificial Path
 - Canal / Ditch
 - Stream/Runway Interment
 - NHD Waterbody**
 - Lake / Pond
 - Lake / Pond (Streambed)
 - CONUS Wetlands**
 - Freshwater Emergent Wetland
 - Freshwater Pond



Great Basin Team 6
7/2/2022 2006



112°25.5'W 112°25'W 112°24.5'W 112°24'W 112°23.5'W 112°23'W 112°22.5'W 112°22'W 112°21.5'W 112°21.01'W 112°20.5'W 112°20'W 112°19.5'W 112°19'W 112°18.5'W 112°18'W 112°17.5'W 112°17'W 112°16.5'W 112°16'W

37°33'N 37°32.5'N 37°32'N 37°31.48'N 37°31'N 37°30.5'N 37°30'N 37°29.5'N 37°29'N 37°28.5'N 37°28'N 37°27.5'N