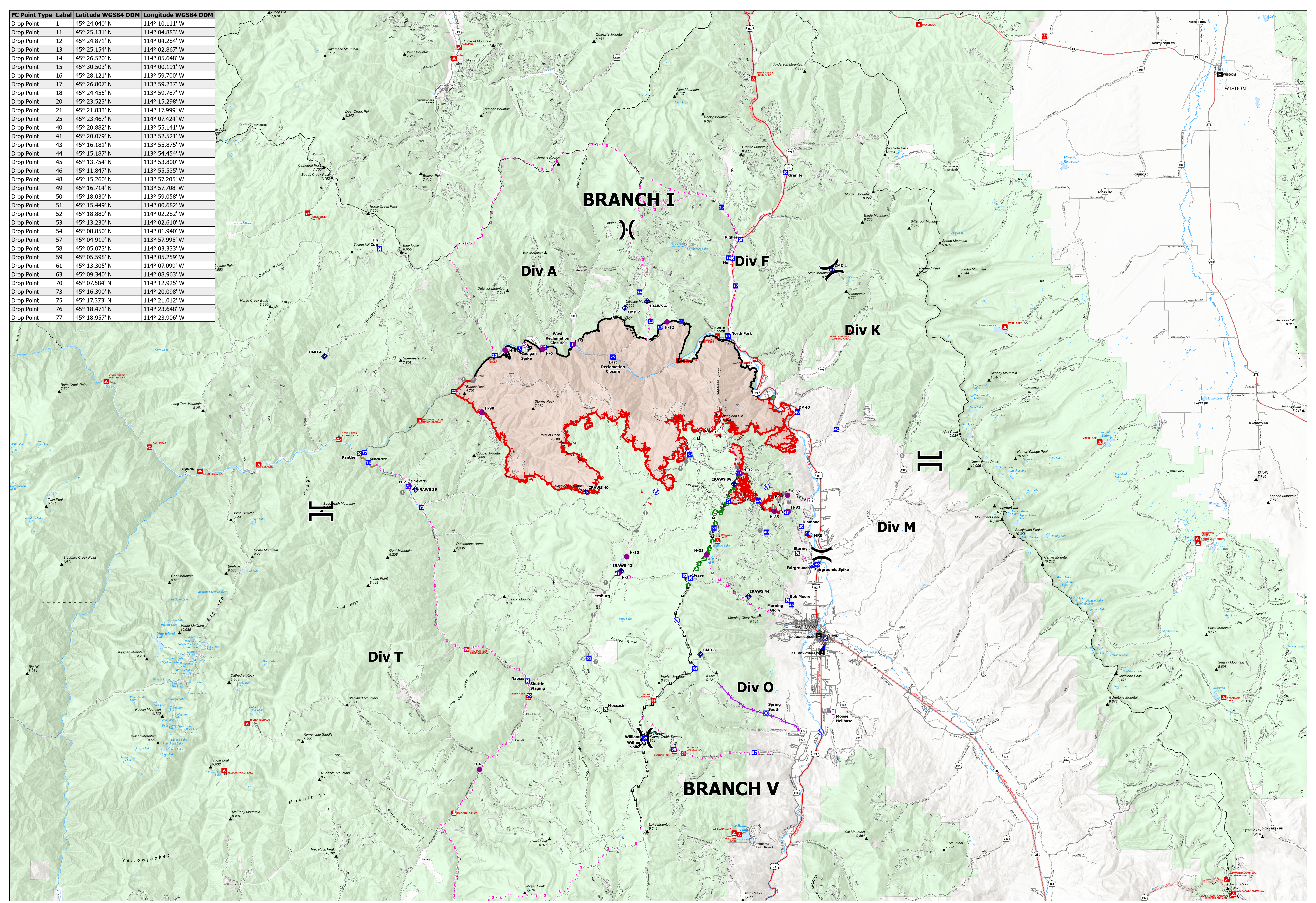


FC Point Type	Label	Latitude WGS84 DDM	Longitude WGS84 DDM
Drop Point	1	45° 24.040' N	114° 10.111' W
Drop Point	11	45° 25.131' N	114° 04.883' W
Drop Point	12	45° 24.871' N	114° 04.284' W
Drop Point	13	45° 25.154' N	114° 02.867' W
Drop Point	14	45° 26.520' N	114° 05.648' W
Drop Point	15	45° 30.503' N	114° 00.191' W
Drop Point	16	45° 28.121' N	113° 59.700' W
Drop Point	17	45° 26.807' N	113° 59.237' W
Drop Point	18	45° 24.455' N	113° 59.787' W
Drop Point	20	45° 23.523' N	114° 15.298' W
Drop Point	21	45° 21.833' N	114° 17.999' W
Drop Point	25	45° 23.467' N	114° 07.424' W
Drop Point	40	45° 20.882' N	113° 55.141' W
Drop Point	41	45° 20.079' N	113° 52.521' W
Drop Point	43	45° 16.181' N	113° 55.875' W
Drop Point	44	45° 15.187' N	113° 54.454' W
Drop Point	45	45° 13.754' N	113° 53.800' W
Drop Point	46	45° 11.847' N	113° 55.535' W
Drop Point	48	45° 15.260' N	113° 57.205' W
Drop Point	49	45° 16.714' N	113° 57.708' W
Drop Point	50	45° 18.030' N	113° 59.058' W
Drop Point	51	45° 15.449' N	114° 00.682' W
Drop Point	52	45° 18.880' N	114° 02.282' W
Drop Point	53	45° 13.230' N	114° 02.610' W
Drop Point	54	45° 08.850' N	114° 01.940' W
Drop Point	57	45° 04.919' N	113° 57.995' W
Drop Point	58	45° 05.073' N	114° 03.333' W
Drop Point	59	45° 05.598' N	114° 05.259' W
Drop Point	61	45° 13.305' N	114° 07.099' W
Drop Point	63	45° 09.340' N	114° 08.963' W
Drop Point	70	45° 07.584' N	114° 12.925' W
Drop Point	73	45° 16.390' N	114° 20.098' W
Drop Point	75	45° 17.373' N	114° 21.012' W
Drop Point	76	45° 18.471' N	114° 23.648' W
Drop Point	77	45° 18.957' N	114° 23.906' W




Transportation

Moose ID-SCF-022105

58,168 Acres

08/03/2022



<ul style="list-style-type: none"> ● Aerial Hazard ■ Mobile Retardant Base ● Helibase ⊗ Value at Risk ⊗ Division Break ⊗ Branch Break ■ Incident Command Post ■ Drop Point 	<ul style="list-style-type: none"> ■ Closure ■ Staging Area ● Other ● Bridge ● Water Development or Draft Site ● Repair Point 	<ul style="list-style-type: none"> ● Landing or Log Deck ■ Camp ■ Mobile Weather Unit ● Repeater ● Water Source ● Completed Burnout ■ Completed Dozer Line ■ Completed Hand Line 	<ul style="list-style-type: none"> — Completed Mixed Construction Line — Completed Road as Line — Planned Dozer Line — Planned Hand Line — Planned Mixed Construction Line — Potential Control Line — Access or Improved Road — Repair Line 	<ul style="list-style-type: none"> ■ Aerial Hazard — Gravel Road — Dirt Roads — Unimproved Roads — Closed Roads — Primary Highway — Secondary Highway — Paved Roads — Dirt (Not Paved) — Paved Road
---	---	---	---	--

Created 8/2/2022 at 2155

North American 1983 Datum. Lat/Long Grid

0 1.5 3 4.5 Miles